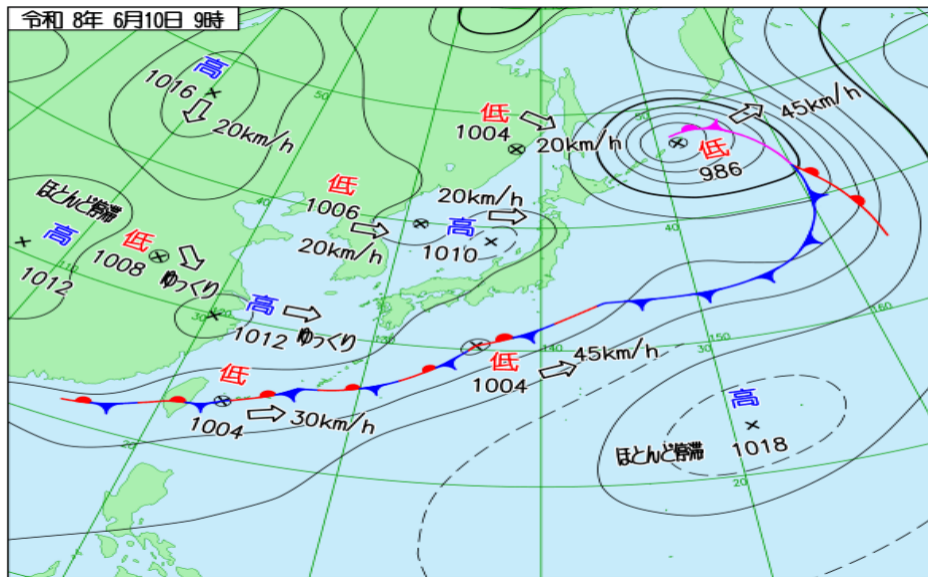
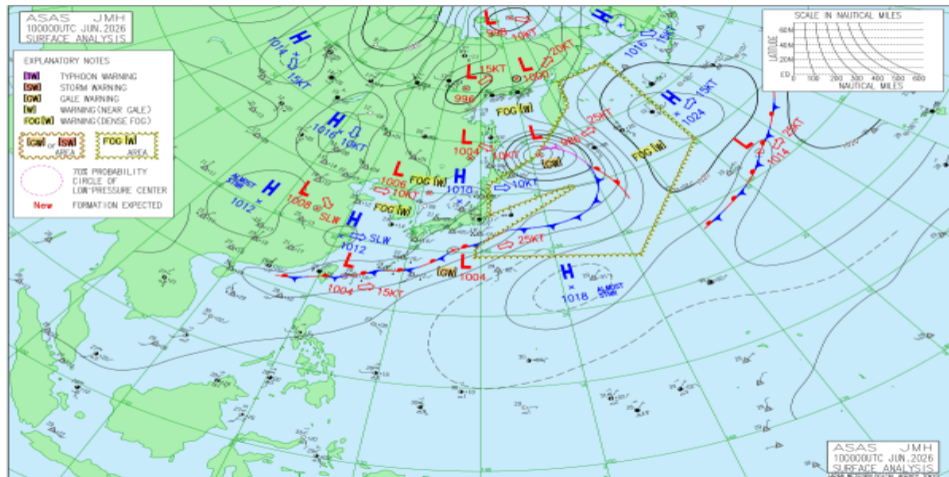


JMA 日本域実況天気図 06/10 00Z

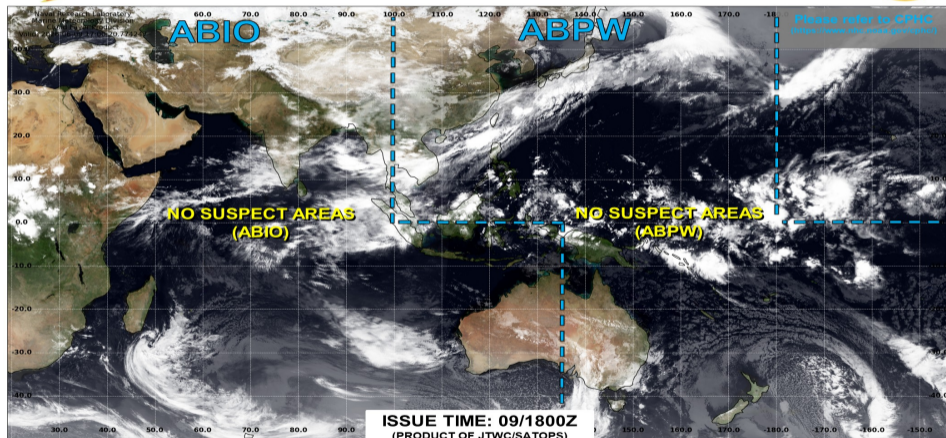


JMA アジア太平洋域実況天気図 06/10 00Z





JOINT TYPHOON WARNING CENTER



LOW

TC development unlikely within 24 hours

MEDIUM

TC development likely, but expected to occur beyond 24 hours

HIGH

TC development likely within 24 hours (Reference TCFA)

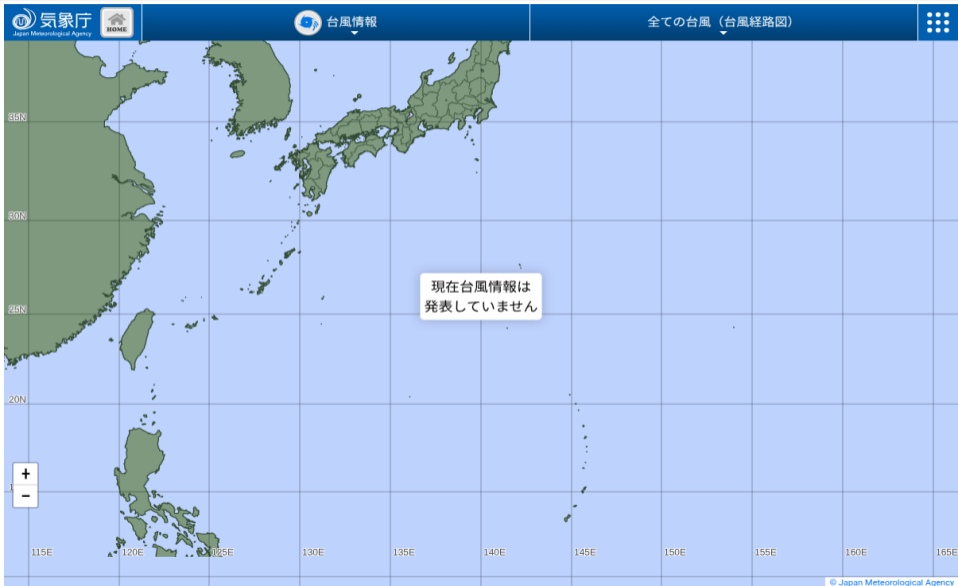
SUB TROPICAL

Monitoring for potential transition to TC. Invest label color denotes tropical transition probability

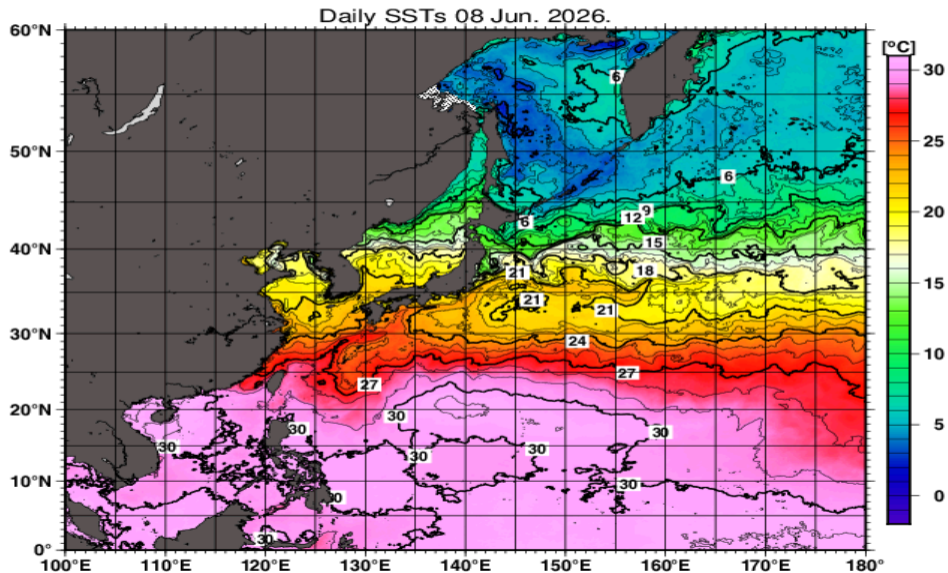


Tropical Cyclone (Reference Warning)

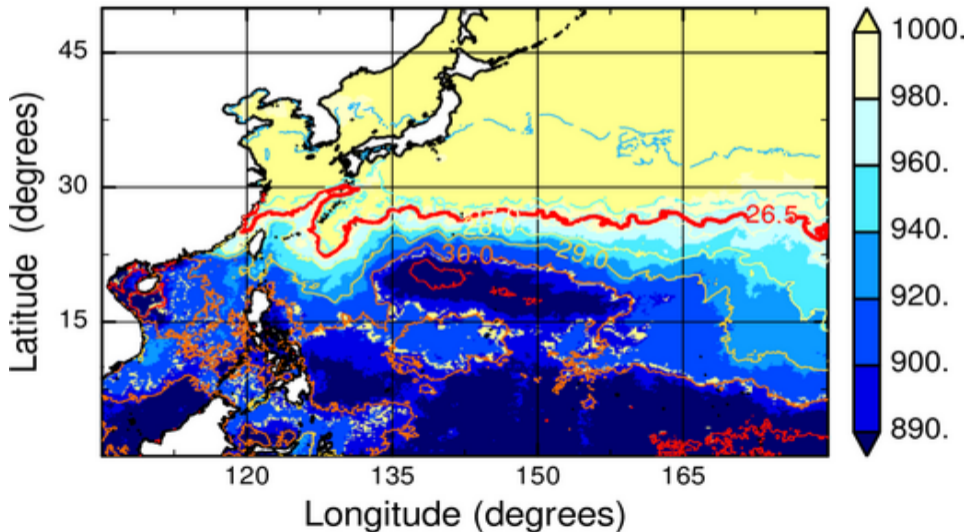
JMA 台風実況



JMA 海面水温解析



MPI_{BE}, JMAGSM+HIMSST (mb) (00:00:00Z08Jun2026)



No Figure

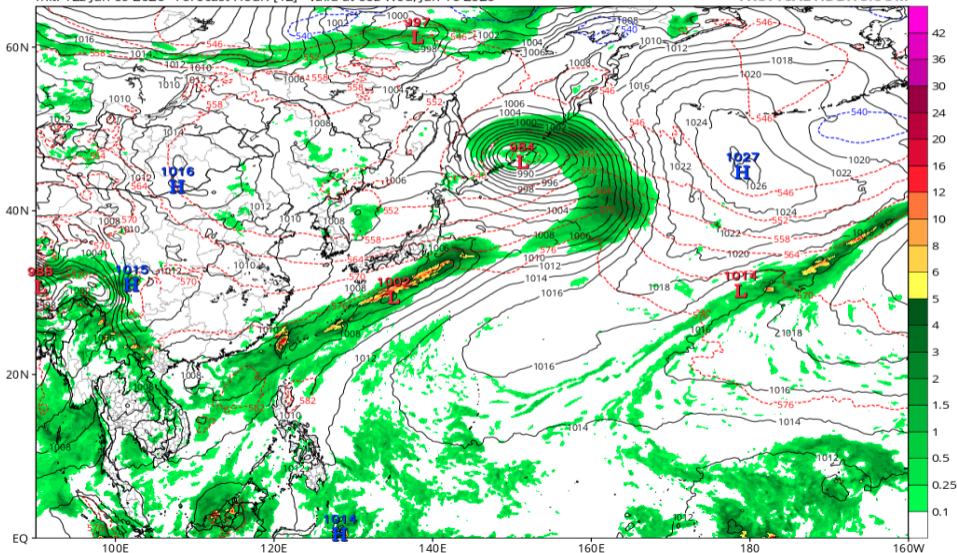
No Figure

地上気圧配置 (GFS 06/10 00Z 予報)

GFS 6-hour Averaged Precip Rate (mm/hr), MSLP (hPa) & 1000-500mb Thickness (dam)

Init: 12z Jun 09 2026 Forecast Hour: [12] valid at 00z Wed, Jun 10 2026

TROPICALTIDBITS.COM

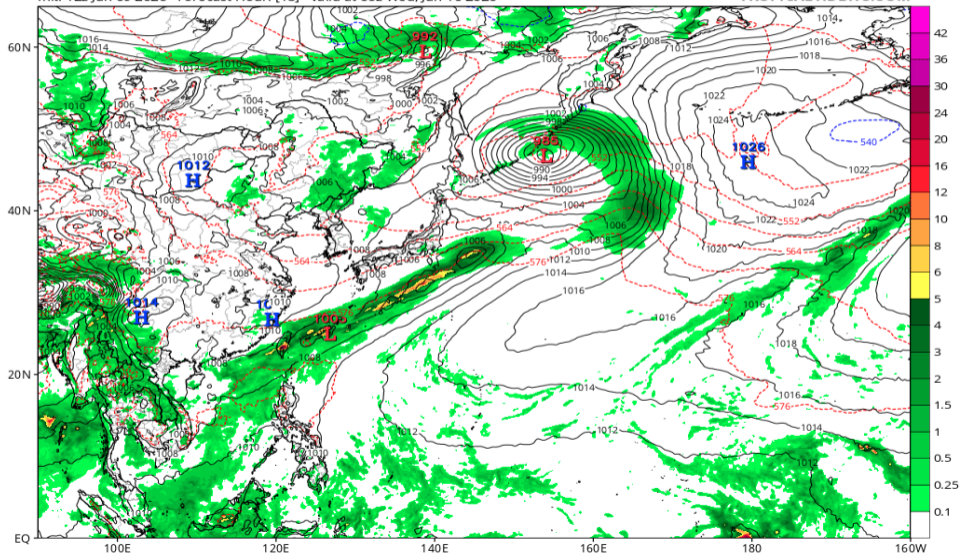


地上気圧配置 (GFS 06/10 06Z 予報)

GFS 6-hour Averaged Precip Rate (mm/hr), MSLP (hPa) & 1000-500mb Thickness (dam)

Init: 12z Jun 09 2026 Forecast Hour: [18] valid at 06z Wed, Jun 10 2026

TROPICALTIDBITS.COM

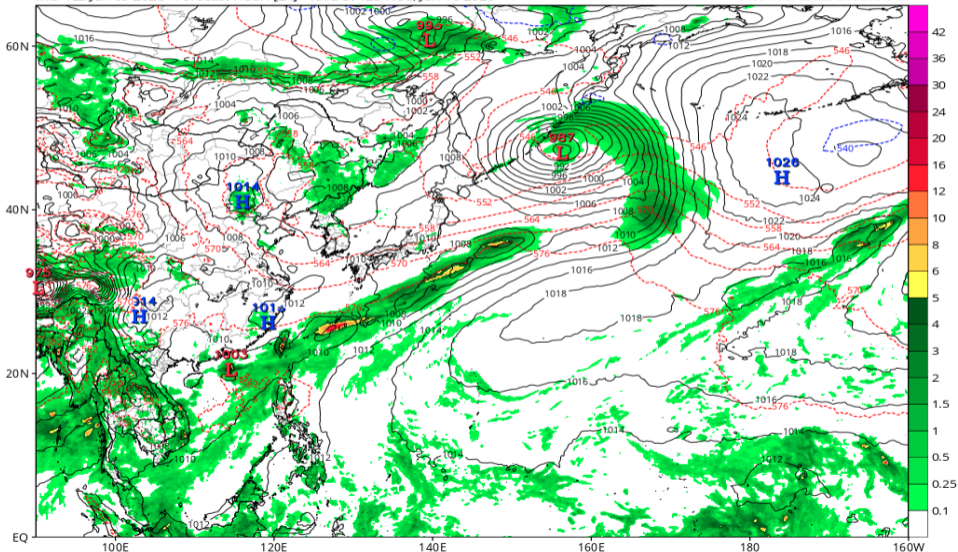


地上気圧配置 (GFS 06/10 12Z 予報)

GFS 6-hour Averaged Precip Rate (mm/hr), MSLP (hPa) & 1000-500mb Thickness (dam)

Init: 12z Jun 09 2026 Forecast Hour: [24] valid at 12z Wed, Jun 10 2026

TROPICALTIDBITS.COM

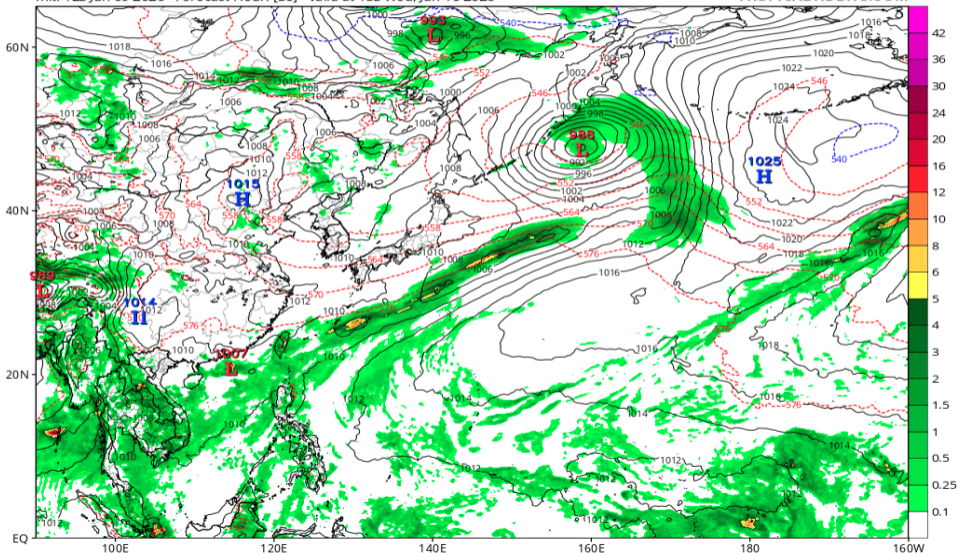


地上気圧配置 (GFS 06/10 18Z 予報)

GFS 6-hour Averaged Precip Rate (mm/hr), MSLP (hPa) & 1000-500mb Thickness (dam)

Init: 12z Jun 09 2026 Forecast Hour: [30] valid at 18z Wed, Jun 10 2026

TROPICALTIDBITS.COM

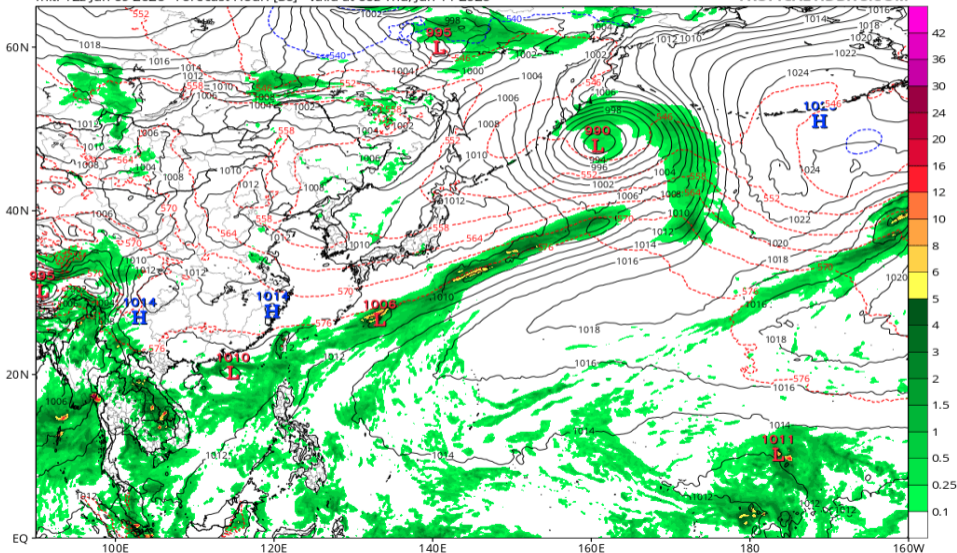


地上気圧配置 (GFS 06/11 00Z 予報)

GFS 6-hour Averaged Precip Rate (mm/hr), MSLP (hPa) & 1000-500mb Thickness (dam)

Init: 12z Jun 09 2026 Forecast Hour: [36] valid at 00z Thu, Jun 11 2026

TROPICALTIDBITS.COM

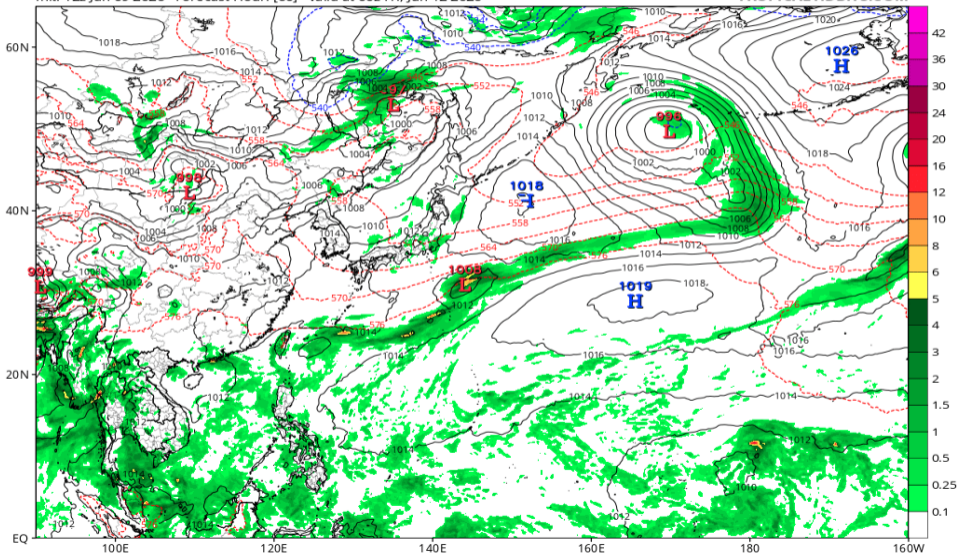


地上気圧配置 (GFS 06/12 00Z 予報)

GFS 6-hour Averaged Precip Rate (mm/hr), MSLP (hPa) & 1000-500mb Thickness (dam)

Init: 12z Jun 09 2026 Forecast Hour: [60] valid at 00z Fri, Jun 12 2026

TROPICALTIDBITS.COM

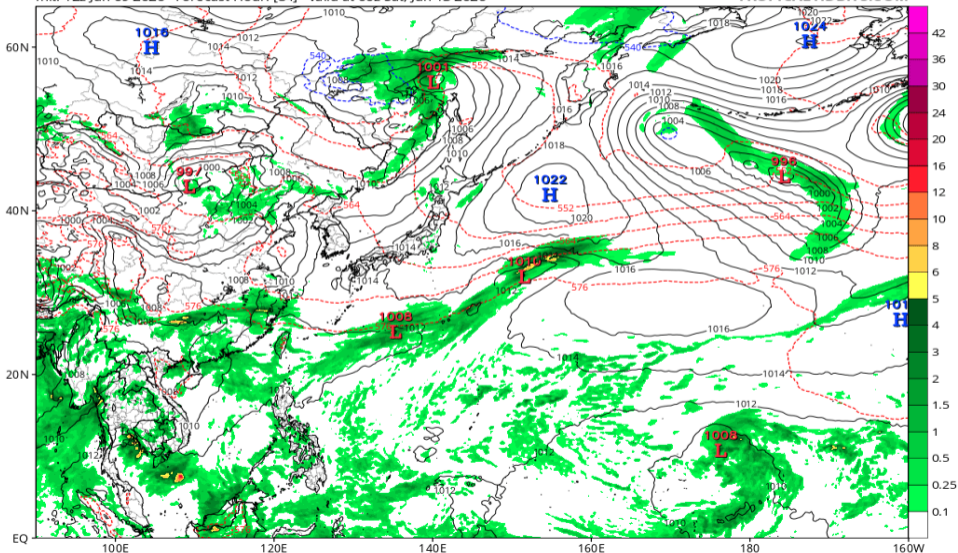


地上気圧配置 (GFS 06/13 00Z 予報)

GFS 6-hour Averaged Precip Rate (mm/hr), MSLP (hPa) & 1000-500mb Thickness (dam)

Init: 12z Jun 09 2026 Forecast Hour: [84] valid at 00z Sat, Jun 13 2026

TROPICALTIDBITS.COM

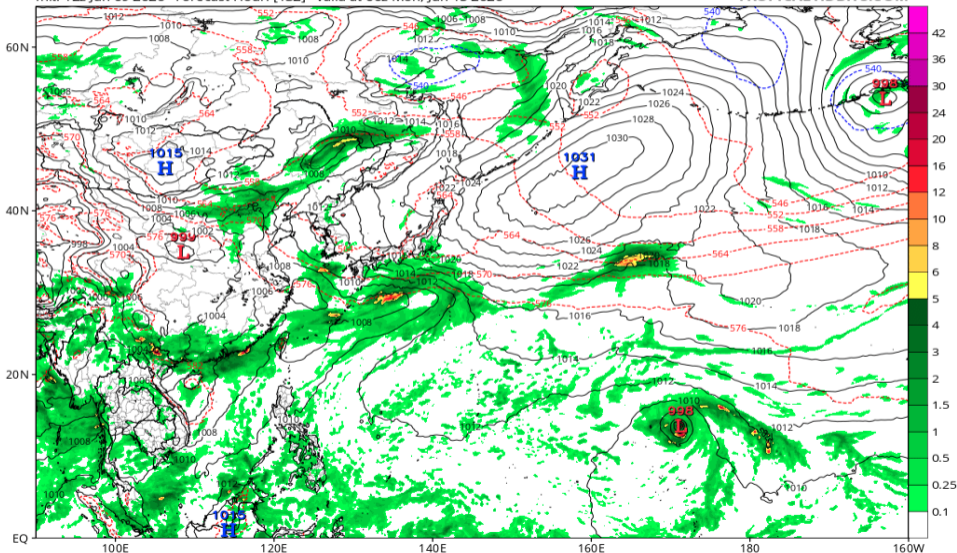


地上気圧配置 (GFS 06/15 00Z 予報)

GFS 6-hour Averaged Precip Rate (mm/hr), MSLP (hPa) & 1000-500mb Thickness (dam)

Init: 12z Jun 09 2026 Forecast Hour: [132] valid at 00z Mon, Jun 15 2026

TROPICALTIDBITS.COM

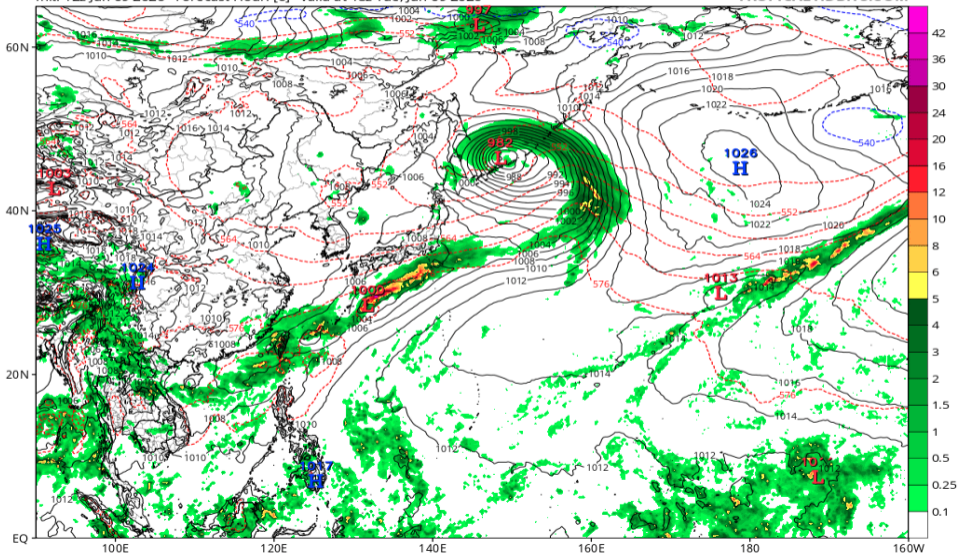


地上気圧配置 (ECMWF 06/10 00Z 予報)

ECMWF Instantaneous Precip Rate (mm/hr), MSLP (hPa) & 1000-500mb Thickness (dam)

Init: 12z Jun 09 2026 Forecast Hour: [6] valid at 18z Tue, Jun 09 2026

TROPICALTIDBITS.COM

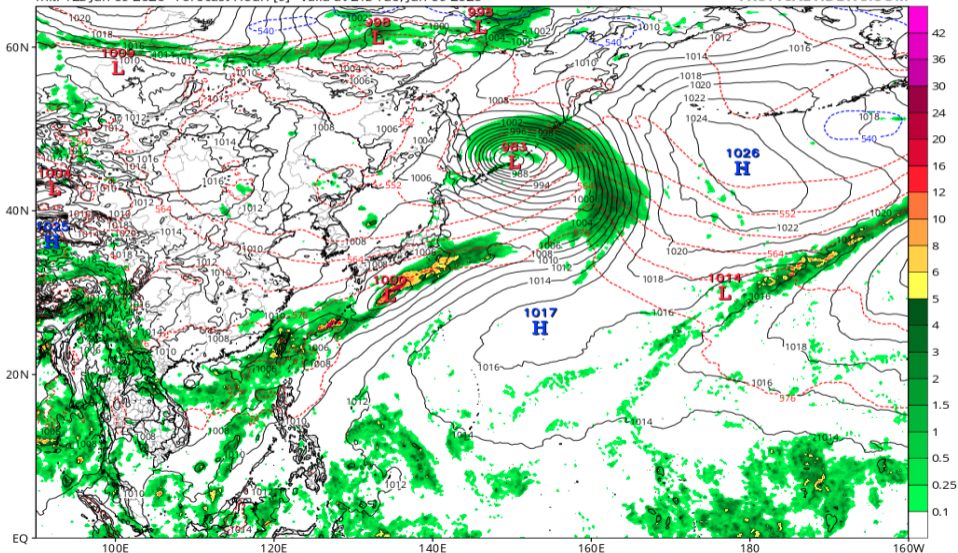


地上気圧配置 (ECMWF 06/10 06Z 予報)

ECMWF Instantaneous Precip Rate (mm/hr), MSLP (hPa) & 1000-500mb Thickness (dam)

Init: 12z Jun 09 2026 Forecast Hour: [9] valid at 21z Tue, Jun 09 2026

TROPICALTIDBITS.COM

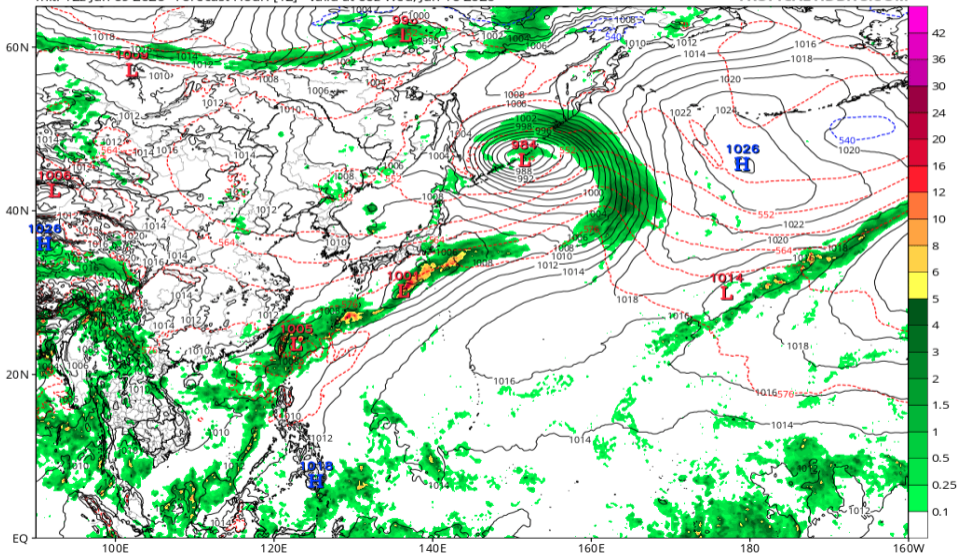


地上気圧配置 (ECMWF 06/10 12Z 予報)

ECMWF Instantaneous Precip Rate (mm/hr), MSLP (hPa) & 1000-500mb Thickness (dam)

Init: 12z Jun 09 2026 Forecast Hour: [12] valid at 00z Wed, Jun 10 2026

TROPICALTIDBITS.COM

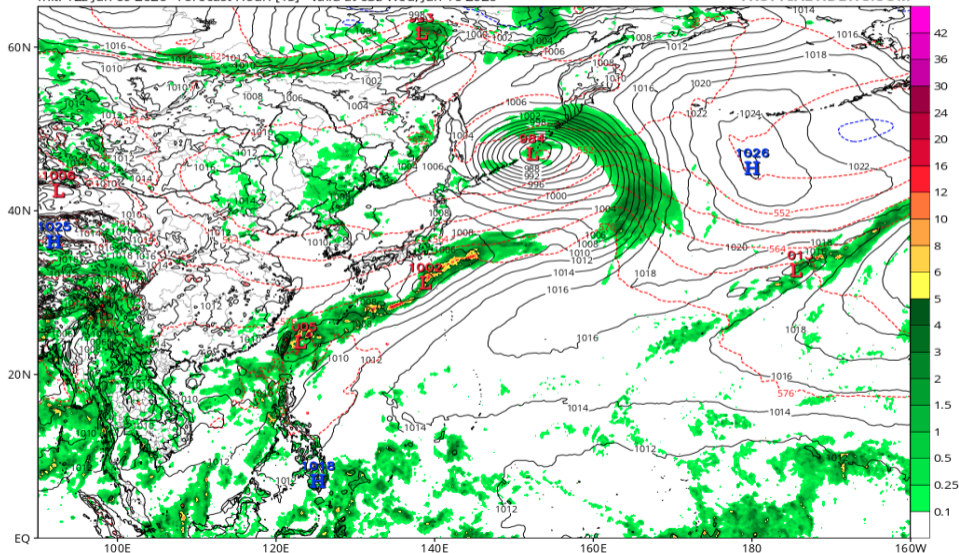


地上気圧配置 (ECMWF 06/10 18Z 予報)

ECMWF Instantaneous Precip Rate (mm/hr), MSLP (hPa) & 1000-500mb Thickness (dam)

Init: 12z Jun 09 2026 Forecast Hour: [15] valid at 03z Wed, Jun 10 2026

TROPICALTIDBITS.COM

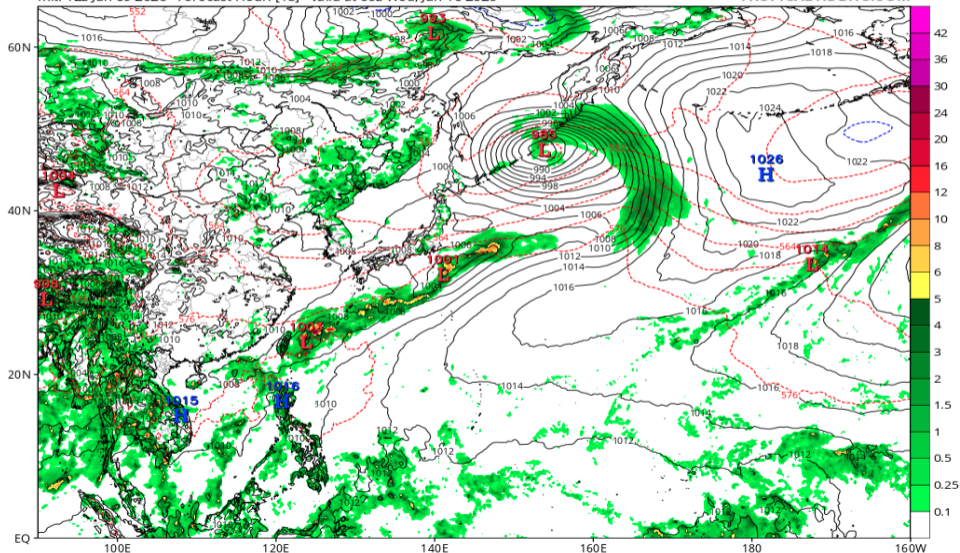


地上気圧配置 (ECMWF 06/11 00Z 予報)

ECMWF Instantaneous Precip Rate (mm/hr), MSLP (hPa) & 1000-500mb Thickness (dam)

Init: 12z Jun 09 2026 Forecast Hour: [18] valid at 06z Wed, Jun 10 2026

TROPICALTIDBITS.COM

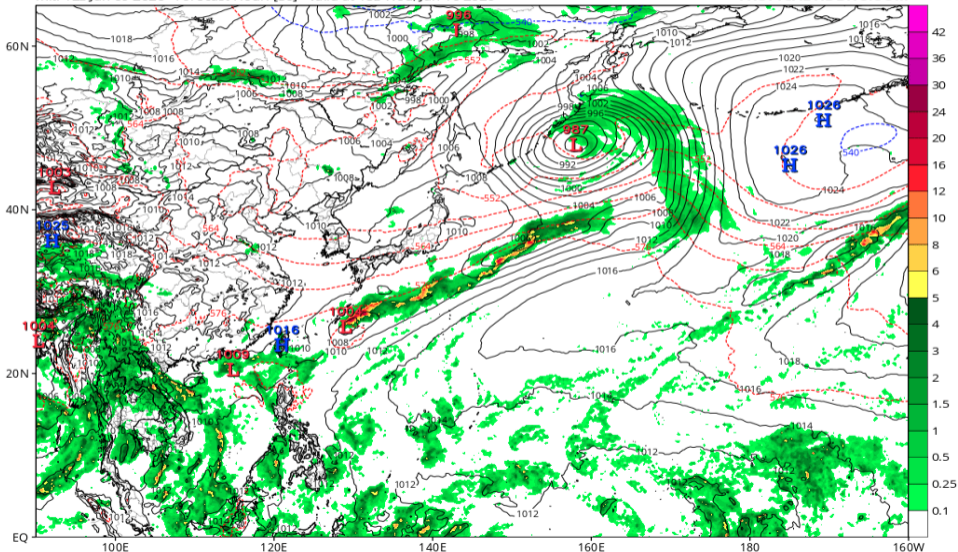


地上気圧配置 (ECMWF 06/12 00Z 予報)

ECMWF Instantaneous Precip Rate (mm/hr), MSLP (hPa) & 1000-500mb Thickness (dam)

Init: 12z Jun 09 2026 Forecast Hour: [30] valid at 18z Wed, Jun 10 2026

TROPICALTIDBITS.COM

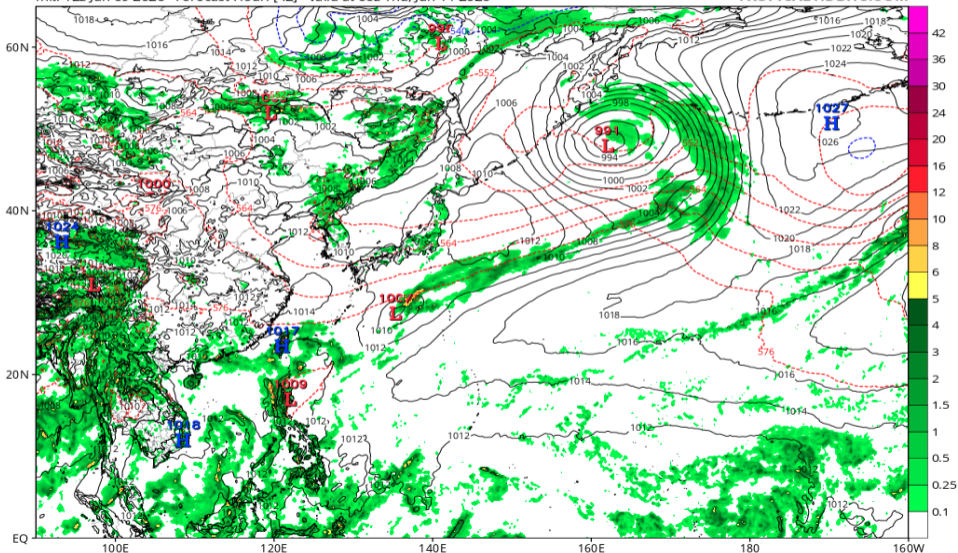


地上気圧配置 (ECMWF 06/13 00Z 予報)

ECMWF Instantaneous Precip Rate (mm/hr), MSLP (hPa) & 1000-500mb Thickness (dam)

Init: 12z Jun 09 2026 Forecast Hour: [42] valid at 06z Thu, Jun 11 2026

TROPICALTIDBITS.COM

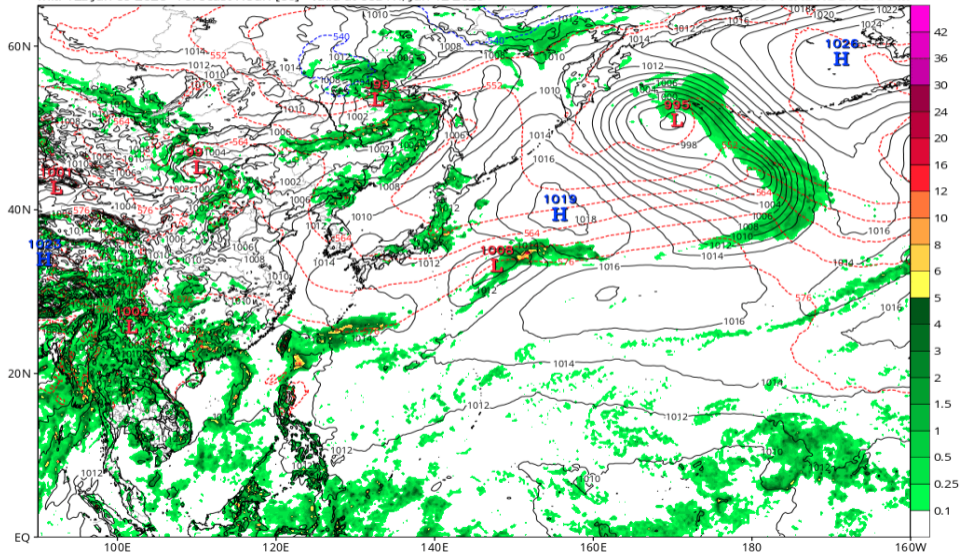


地上気圧配置 (ECMWF 06/15 00Z 予報)

ECMWF Instantaneous Precip Rate (mm/hr), MSLP (hPa) & 1000-500mb Thickness (dam)

Init: 12z Jun 09 2026 Forecast Hour: [66] valid at 06z Fri, Jun 12 2026

TROPICALTIDBITS.COM

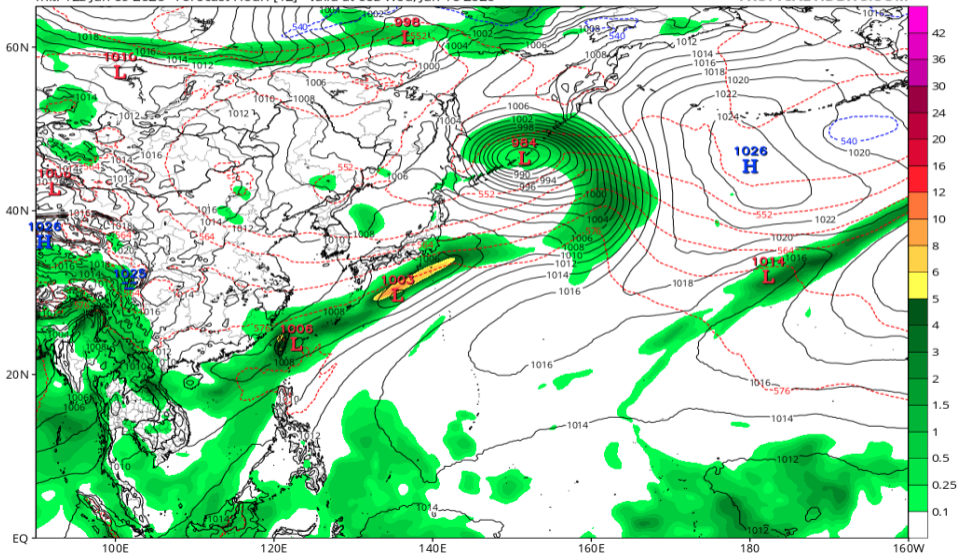


地上気圧配置 (AIFS 06/10 00Z 予報)

EC-AIFS 6-hour Averaged Precip Rate (mm/hr), MSLP (hPa) & 1000-500mb Thickness (dam)

Init: 12z Jun 09 2026 Forecast Hour: [12] valid at 00z Wed, Jun 10 2026

TROPICALTIDBITS.COM

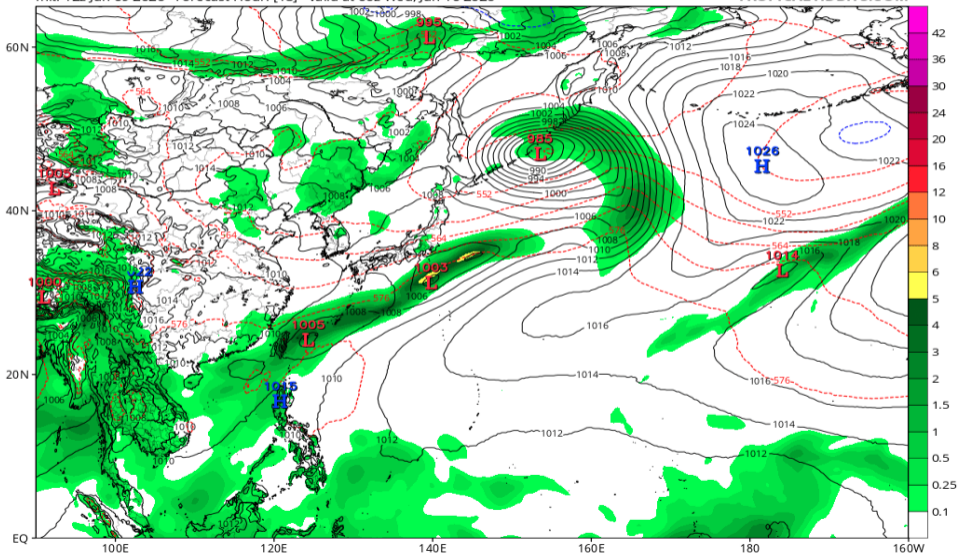


地上気圧配置 (AIFS 06/10 06Z 予報)

EC-AIFS 6-hour Averaged Precip Rate (mm/hr), MSLP (hPa) & 1000-500mb Thickness (dam)

Init: 12z Jun 09 2026 Forecast Hour: [18] valid at 06z Wed, Jun 10 2026

TROPICALTIDBITS.COM

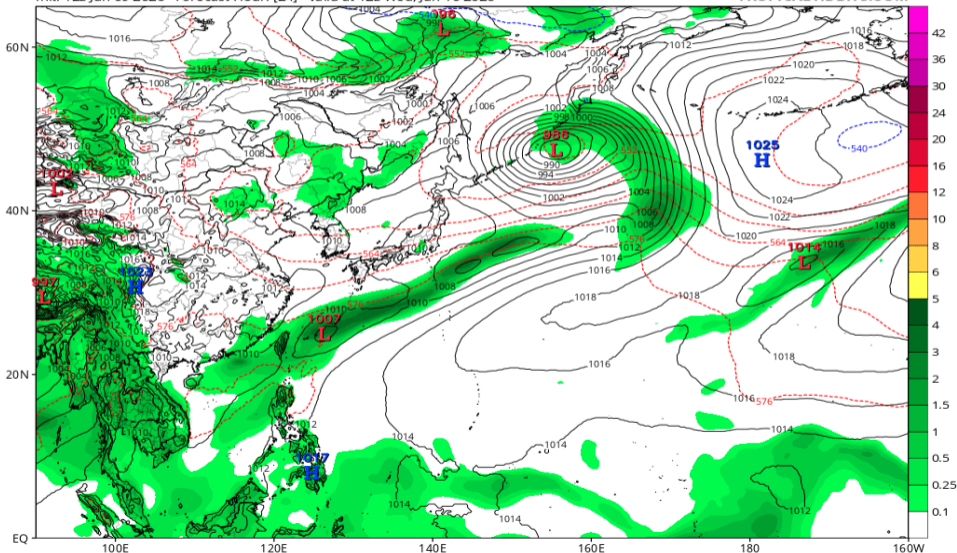


地上気圧配置 (AIFS 06/10 12Z 予報)

EC-AIFS 6-hour Averaged Precip Rate (mm/hr), MSLP (hPa) & 1000-500mb Thickness (dam)

Init: 12z Jun 09 2026 Forecast Hour: [24] valid at 12z Wed, Jun 10 2026

TROPICALTIDBITS.COM

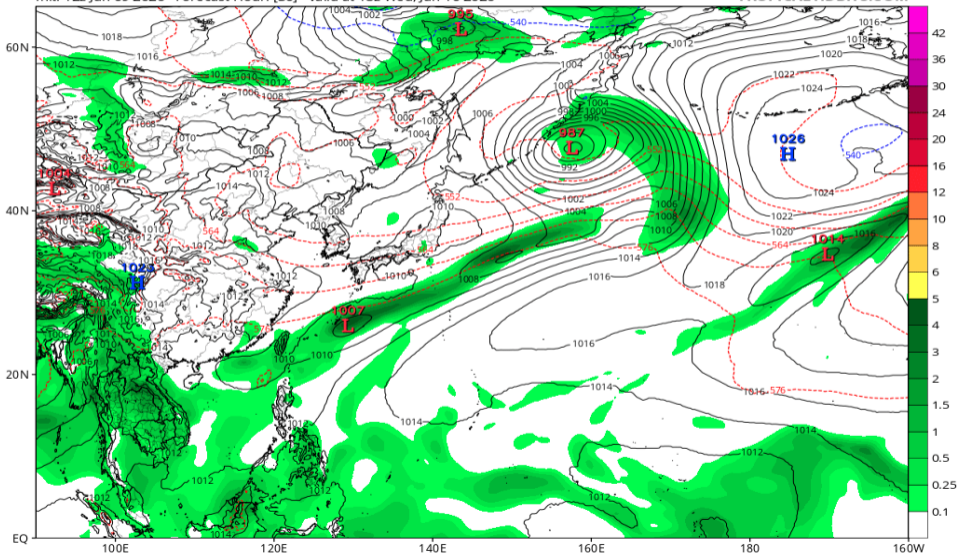


地上気圧配置 (AIFS 06/10 18Z 予報)

EC-AIFS 6-hour Averaged Precip Rate (mm/hr), MSLP (hPa) & 1000-500mb Thickness (dam)

Init: 12z Jun 09 2026 Forecast Hour: [30] valid at 18z Wed, Jun 10 2026

TROPICALTIDBITS.COM

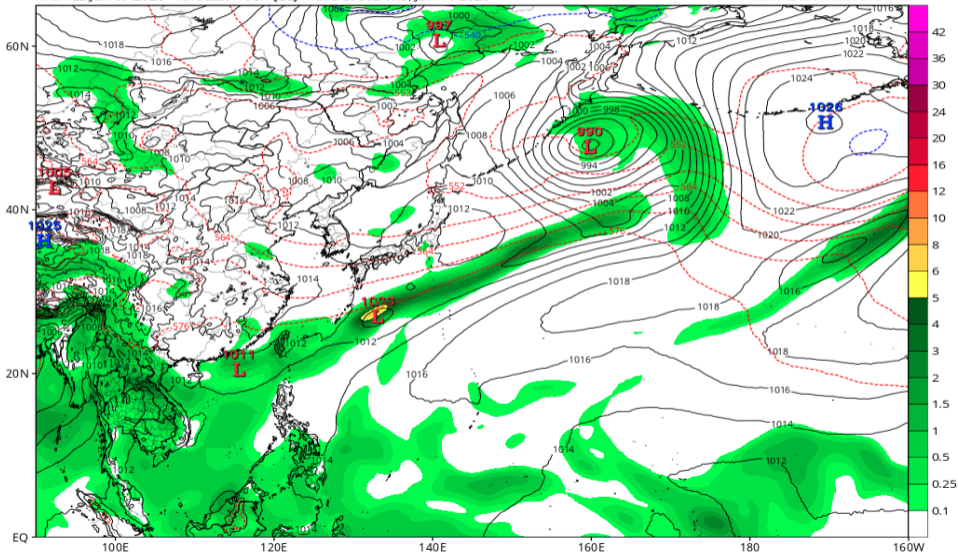


地上気圧配置 (AIFS 06/11 00Z 予報)

EC-AIFS 6-hour Averaged Precip Rate (mm/hr), MSLP (hPa) & 1000-500mb Thickness (dam)

Init: 12z Jun 09 2026 Forecast Hour: [36] valid at 00z Thu, Jun 11 2026

TROPICALTIDBITS.COM

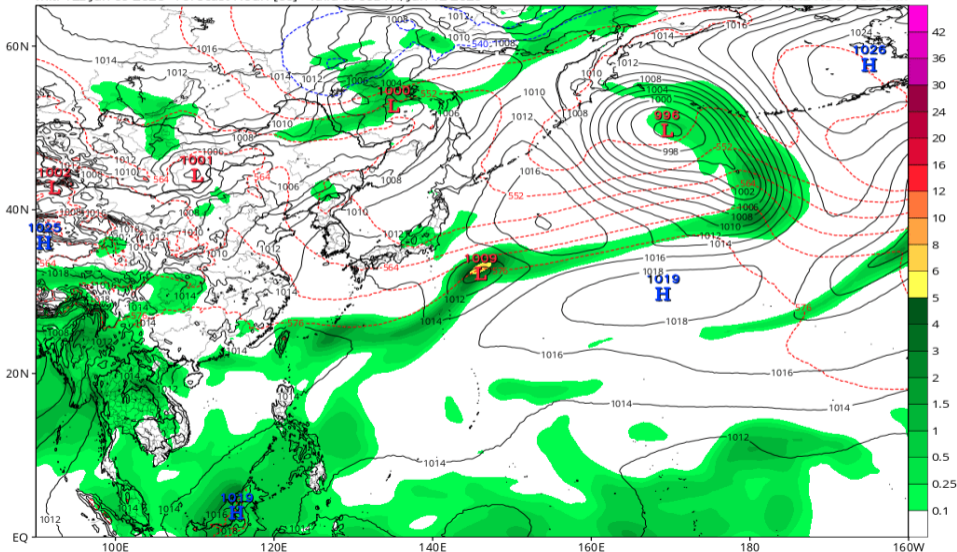


地上気圧配置 (AIFS 06/12 00Z 予報)

EC-AIFS 6-hour Averaged Precip Rate (mm/hr), MSLP (hPa) & 1000-500mb Thickness (dam)

Init: 12z Jun 09 2026 Forecast Hour: [60] valid at 00z Fri, Jun 12 2026

TROPICALTIDBITS.COM

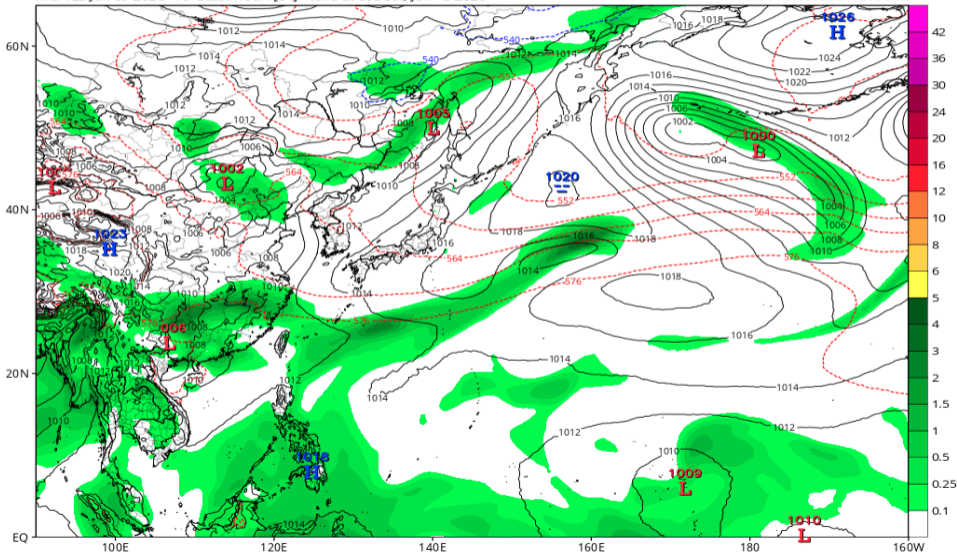


地上気圧配置 (AIFS 06/13 00Z 予報)

EC-AIFS 6-hour Averaged Precip Rate (mm/hr), MSLP (hPa) & 1000-500mb Thickness (dam)

Init: 12z Jun 09 2026 Forecast Hour: [84] valid at 00z Sat, Jun 13 2026

TROPICALTIDBITS.COM

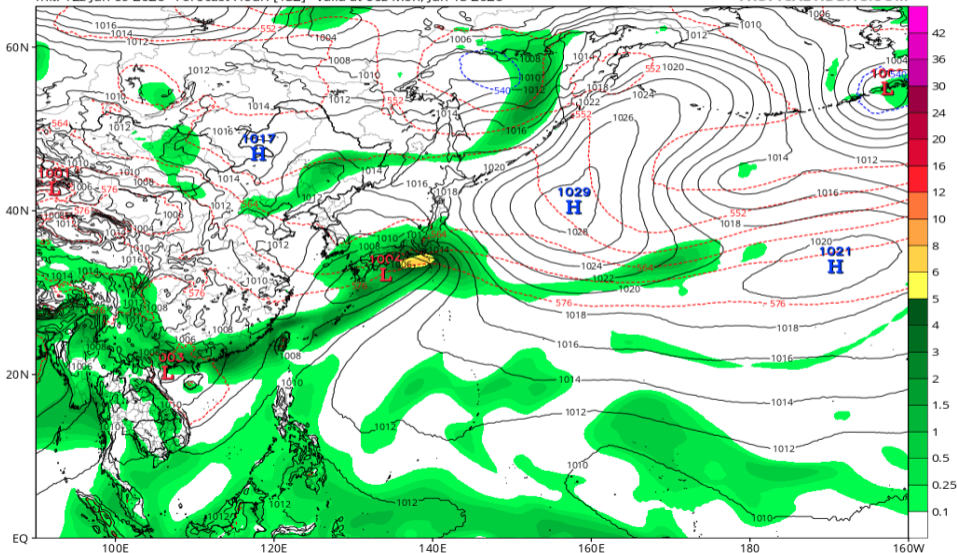


地上気圧配置 (AIFS 06/15 00Z 予報)

EC-AIFS 6-hour Averaged Precip Rate (mm/hr), MSLP (hPa) & 1000-500mb Thickness (dam)

Init: 12z Jun 09 2026 Forecast Hour: [132] valid at 00z Mon, Jun 15 2026

TROPICALTIDBITS.COM



中層相对湿度 (GFS 06/10 00Z 予報)

GFS MSLP (mb), 700-300 hPa Relative Humidity (%), and 700-300 hPa Wind (kt)

Init: 12z Jun 09 2026 Forecast Hour: [132] valid at 00z Mon, Jun 15 2026

TROPICALTIDBITS.COM

