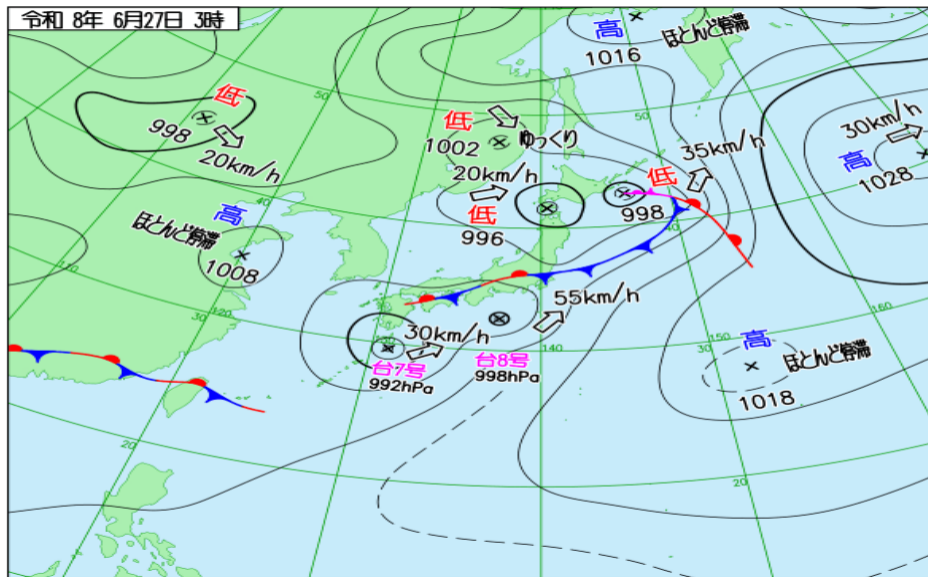
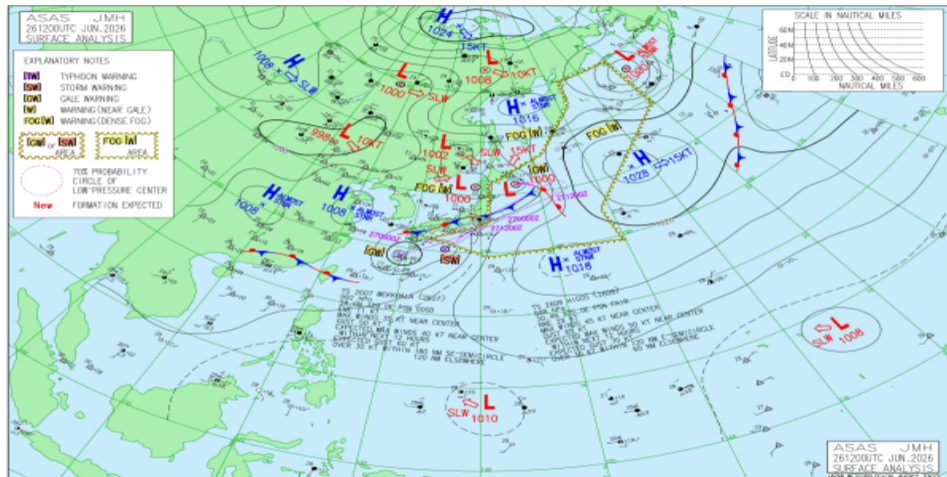


JMA 日本域実況天気図 06/26 18Z

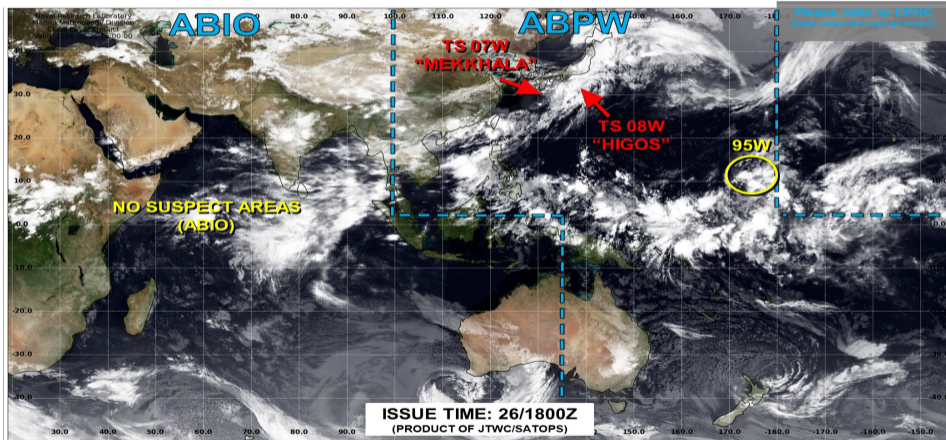


JMA アジア太平洋域実況天気図 06/26 12Z



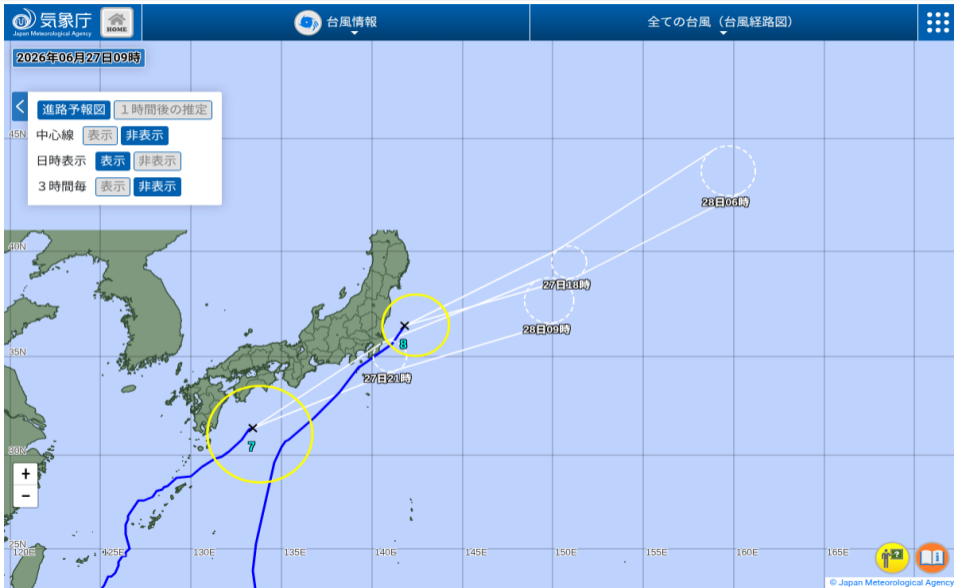


JOINT TYPHOON WARNING CENTER

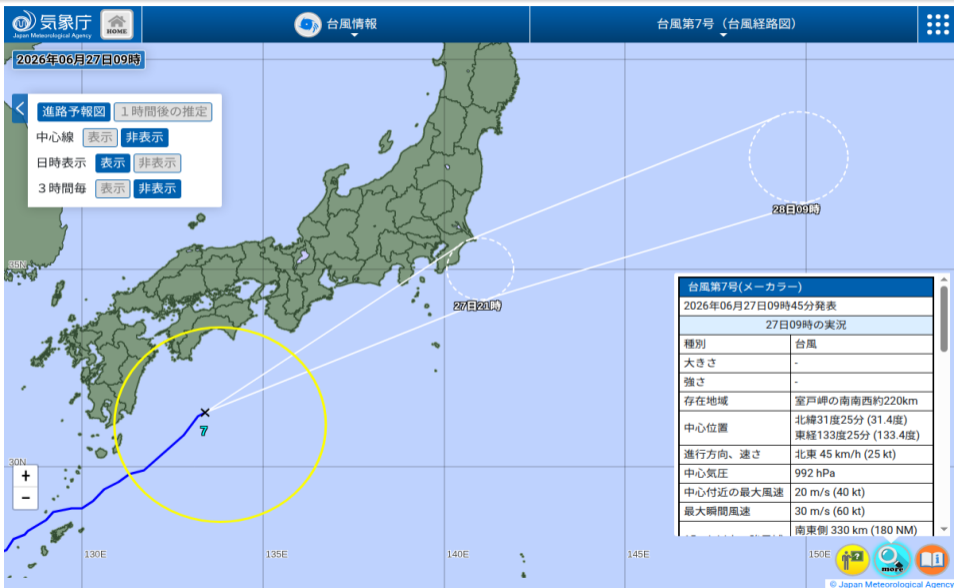


<p>LOW TC development unlikely within 24 hours</p>	<p>MEDIUM TC development likely, but expected to occur beyond 24 hours</p>	<p>HIGH TC development likely within 24 hours (Reference TCFA)</p>	<p>SUB TROPICAL Monitoring for potential transition to TC. Invest label color denotes tropical transition probability</p>	<p>Tropical Cyclone (Reference Warning)</p>
---	---	---	--	--

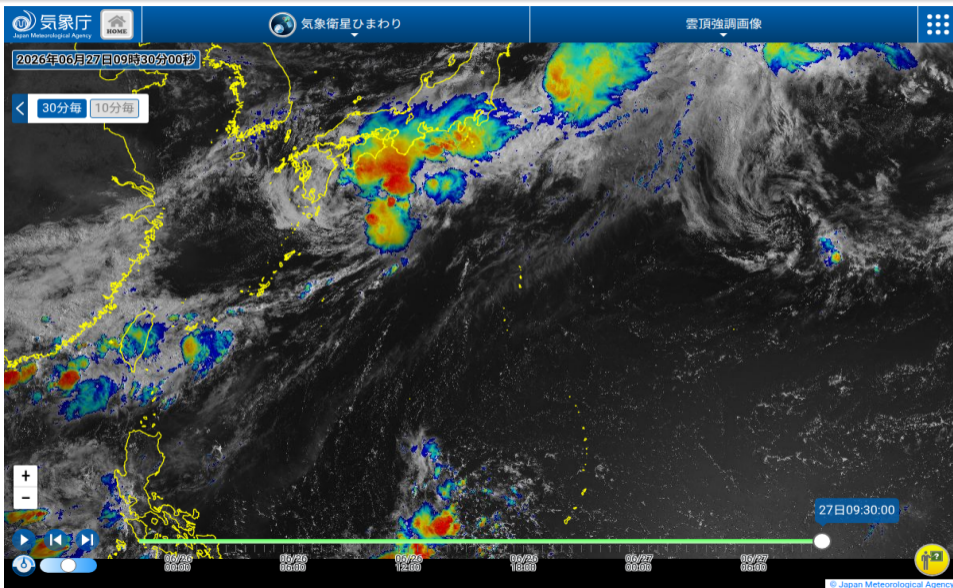
JMA 台風実況



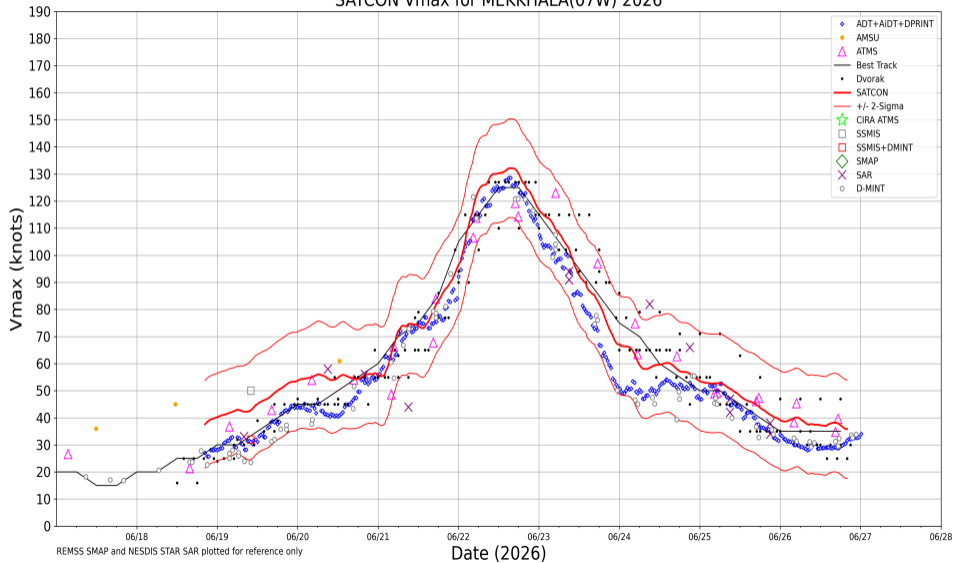
JMA 台風実況



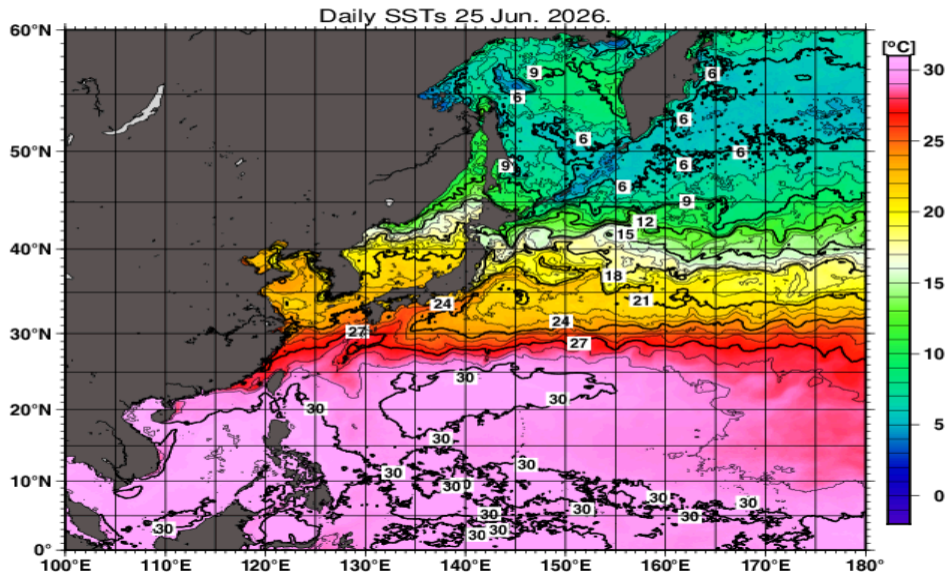
ひまわり雲頂強調



SATCON Vmax for MEKKHALA(07W) 2026



JMA 海面水温解析



No Figure

Ocean Heat Content: 06/26/2026

