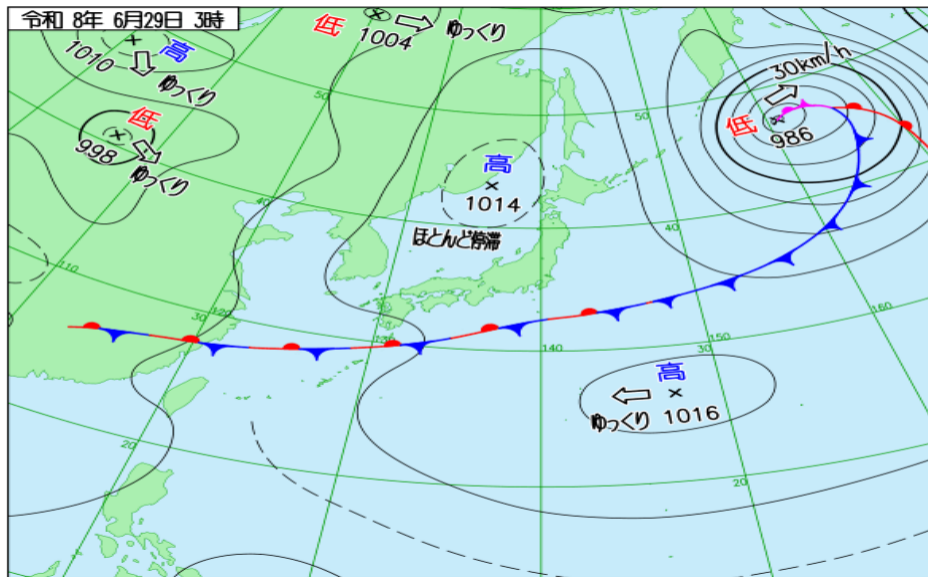
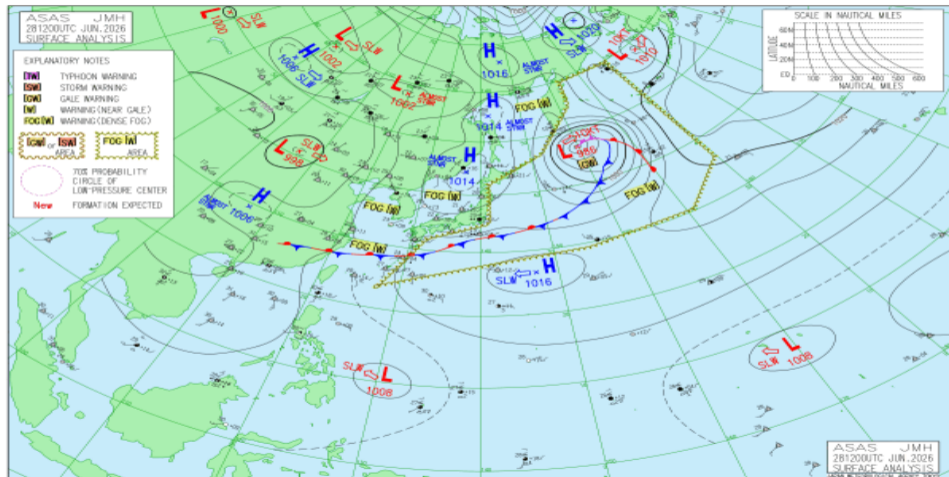


# JMA 日本域実況天気図 06/28 18Z

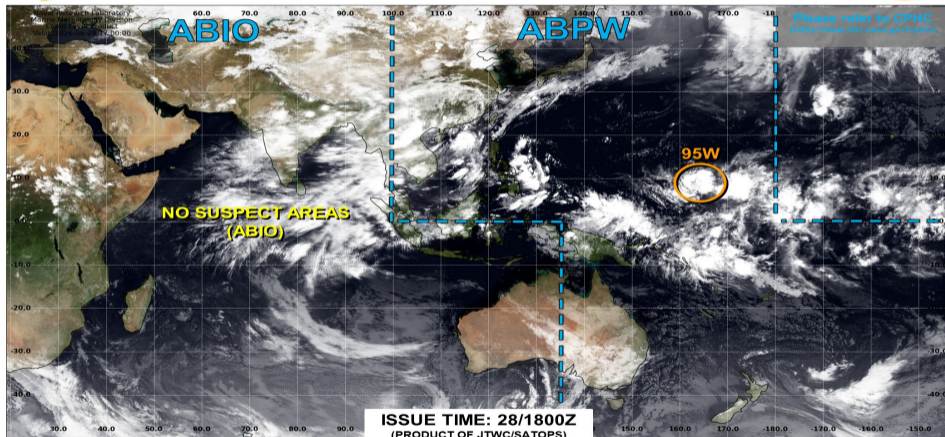


# JMA アジア太平洋域実況天気図 06/28 12Z





## JOINT TYPHOON WARNING CENTER



TC development unlikely within 24 hours



TC development likely, but expected to occur beyond 24 hours



TC development likely within 24 hours (Reference TCFA)

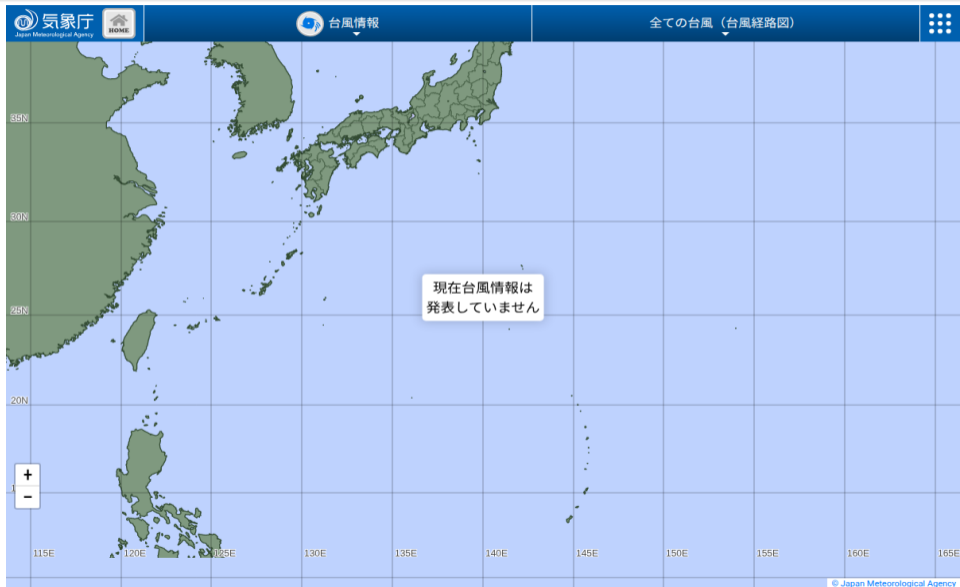


Monitoring for potential transition to TC. Invest label color denotes tropical transition probability

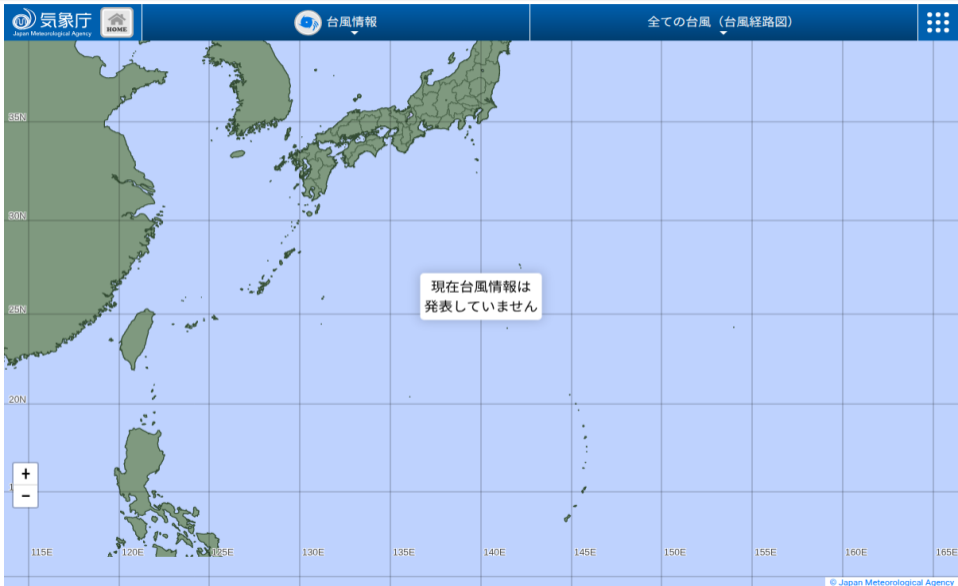


Tropical Cyclone (Reference Warning)

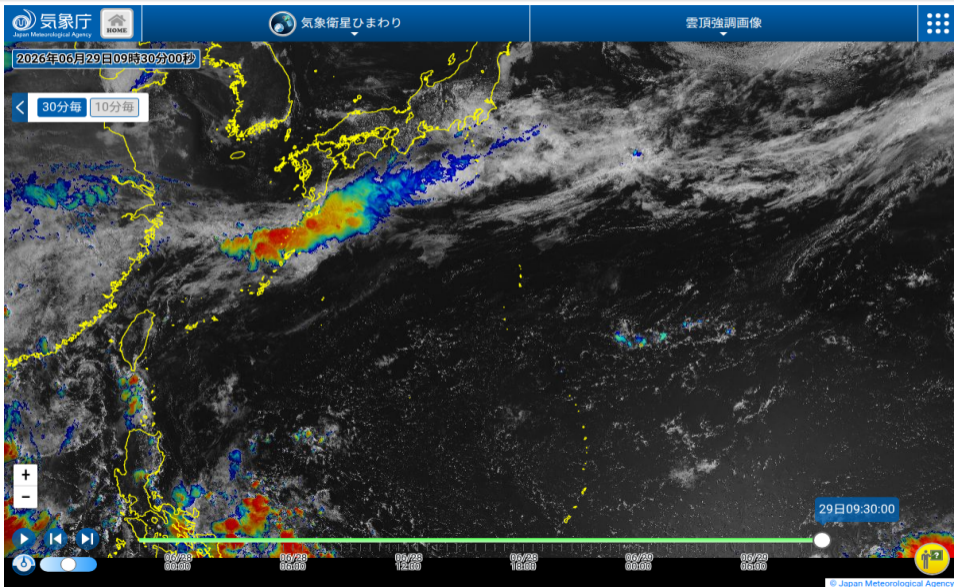
# JMA 台風実況



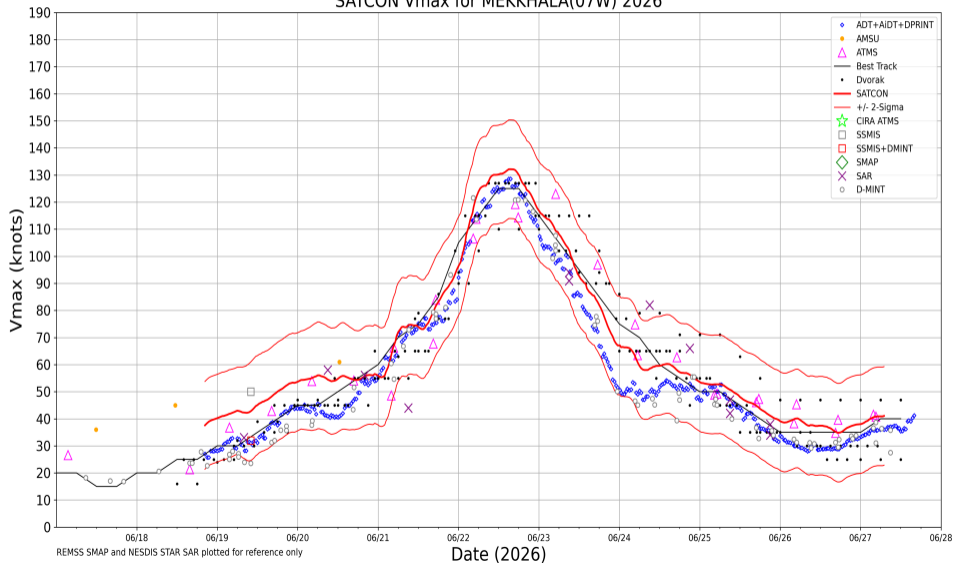
# JMA 台風実況



# ひまわり雲頂強調



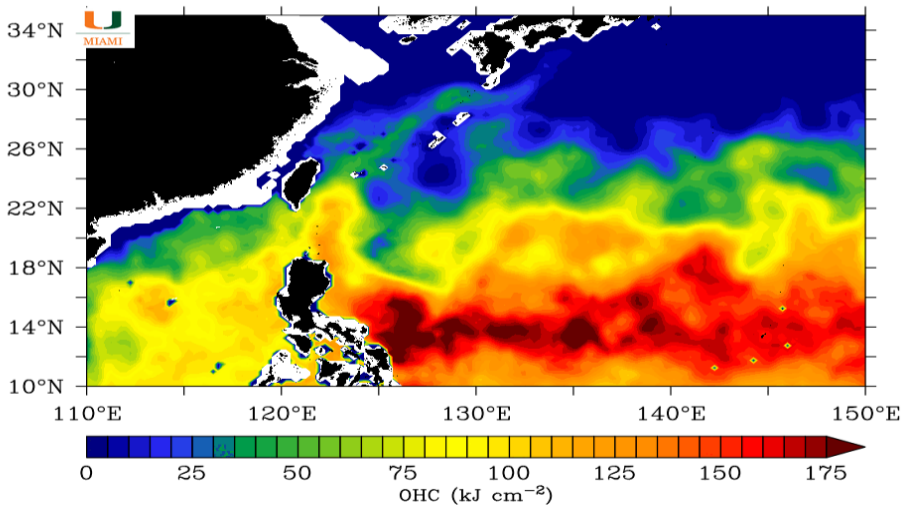
## SATCON Vmax for MEKKHALA(07W) 2026



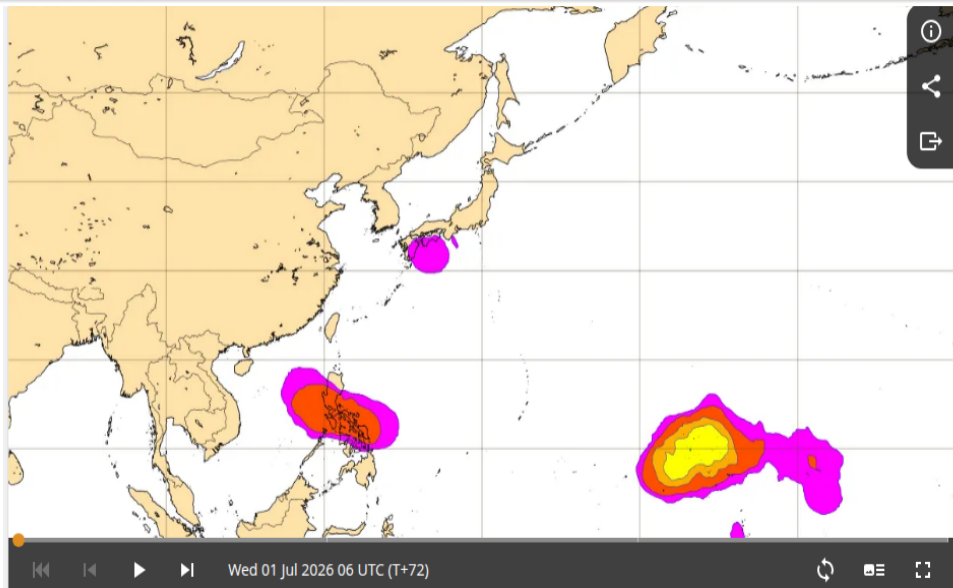


No Figure

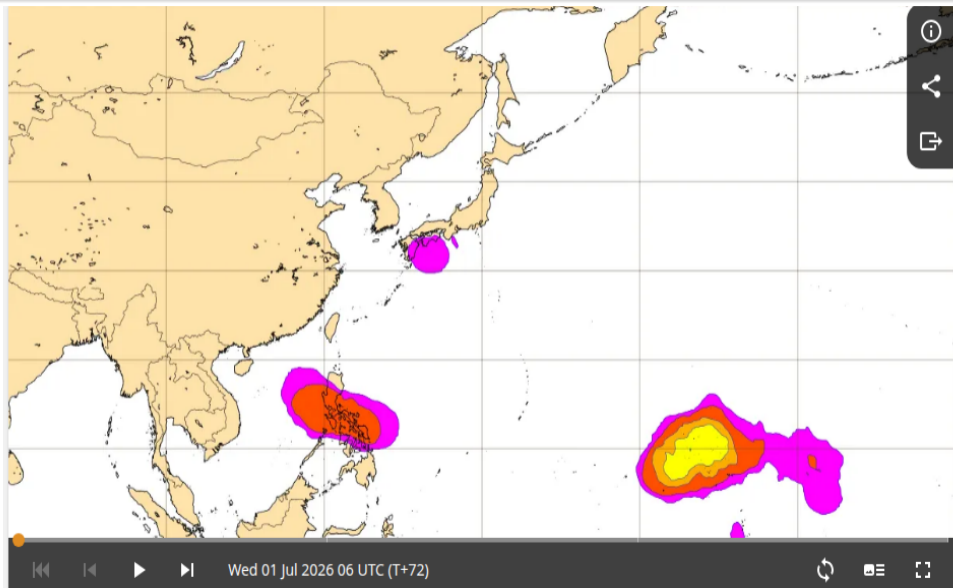
Ocean Heat Content: 06/28/2026



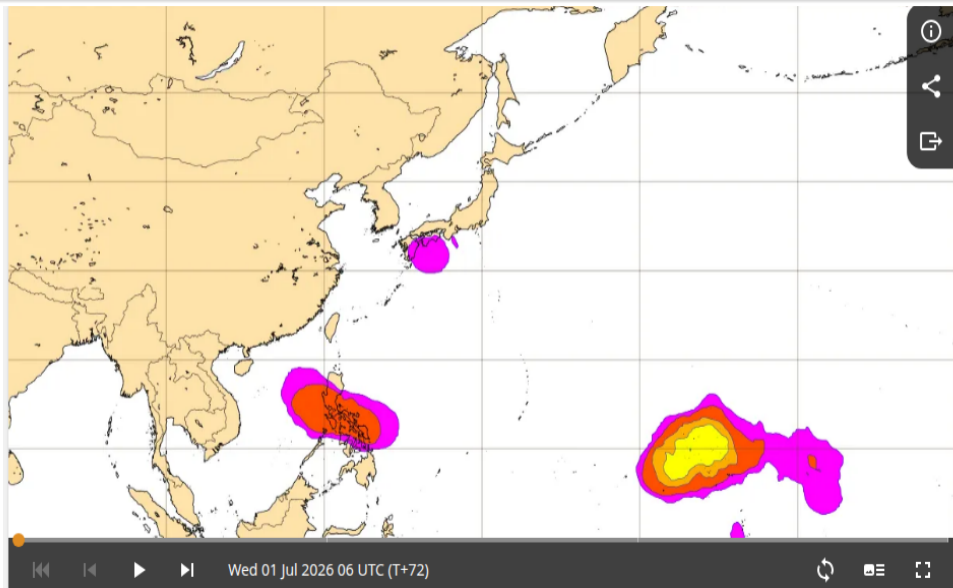
# ECMWF TC genesis 07/04 12Z (6 日先) 予報



# ECMWF TC genesis 07/07 12Z (9 日先) 予報



# ECMWF TC genesis 07/10 12Z (12 日先) 予報

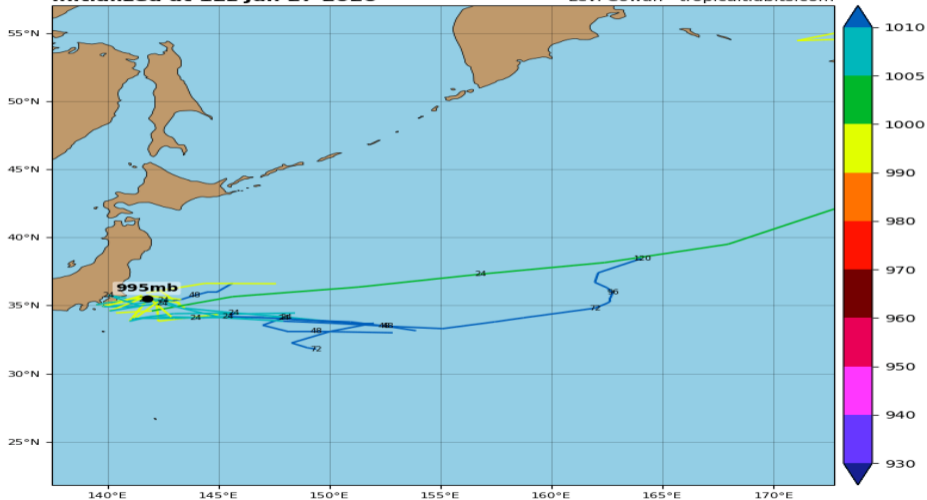


# 07W GEFS (06/28 12Z 初期値)

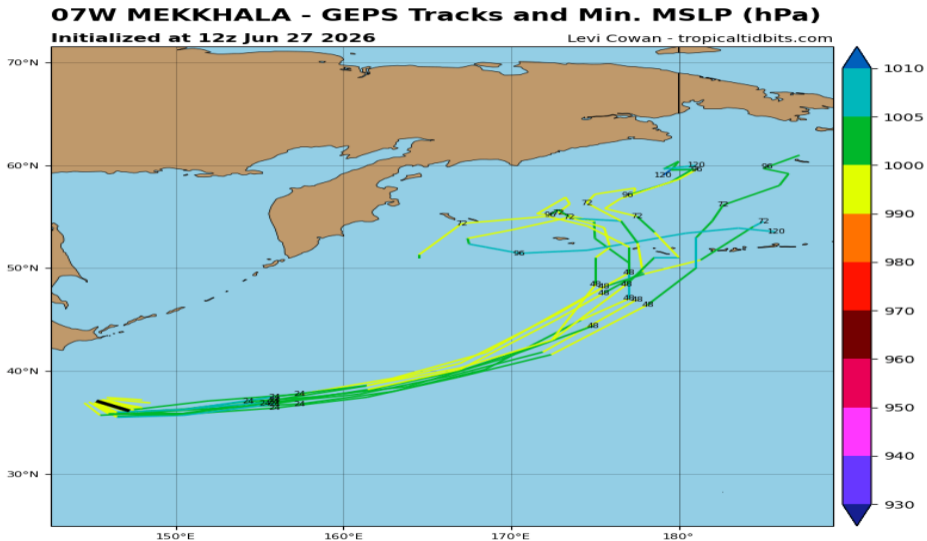
## 07W MEKKHALA - GEFS Tracks and Min. MSLP (hPa)

Initialized at 12z Jun 27 2026

Levi Cowan - tropicaltidbits.com



# 07W GEPS (06/28 12Z 初期値)

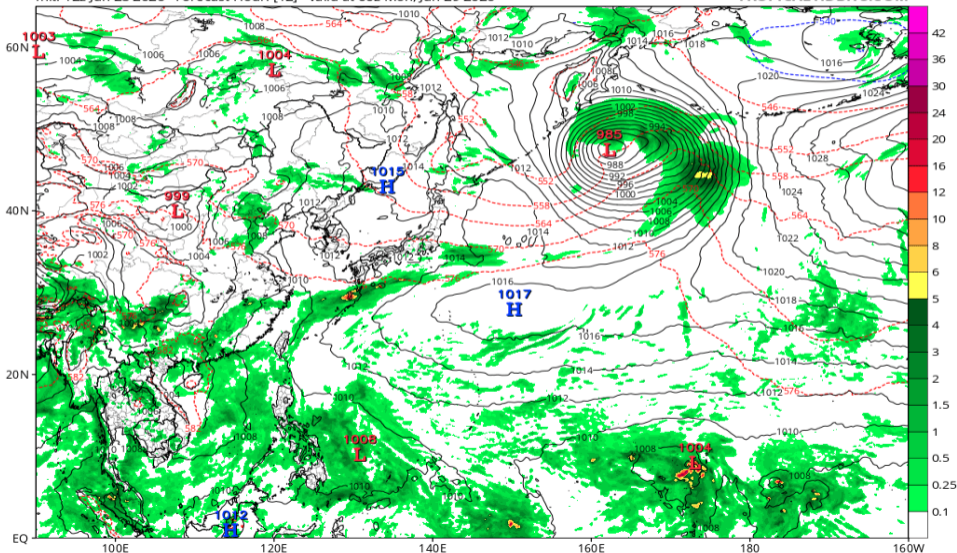


# 地上気圧配置 (GFS 06/29 00Z 予報)

GFS 6-hour Averaged Precip Rate (mm/hr), MSLP (hPa) & 1000-500mb Thickness (dam)

Init: 12z Jun 28 2026 Forecast Hour: [12] valid at 00z Mon, Jun 29 2026

TROPICALTIDBITS.COM

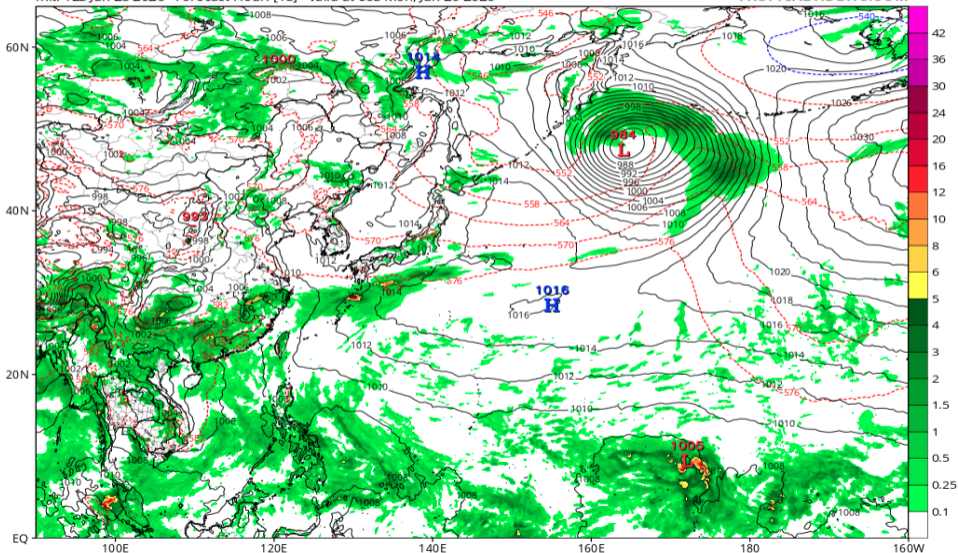


# 地上気圧配置 (GFS 06/29 06Z 予報)

GFS 6-hour Averaged Precip Rate (mm/hr), MSLP (hPa) & 1000-500mb Thickness (dam)

Init: 12z Jun 28 2026 Forecast Hour: [18] valid at 06z Mon, Jun 29 2026

TROPICALTIDBITS.COM

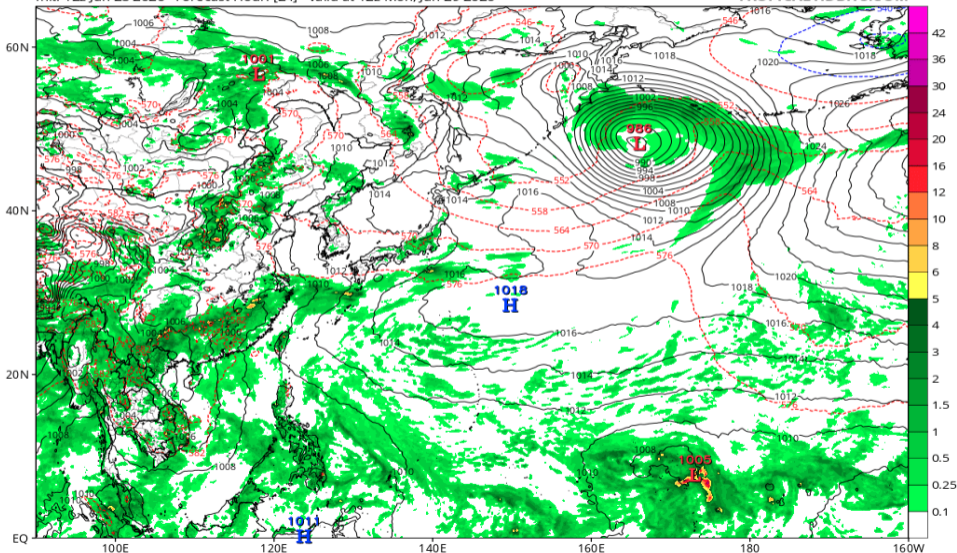


# 地上気圧配置 (GFS 06/29 12Z 予報)

GFS 6-hour Averaged Precip Rate (mm/hr), MSLP (hPa) & 1000-500mb Thickness (dam)

Init: 12z Jun 28 2026 Forecast Hour: [24] valid at 12z Mon, Jun 29 2026

TROPICALTIDBITS.COM

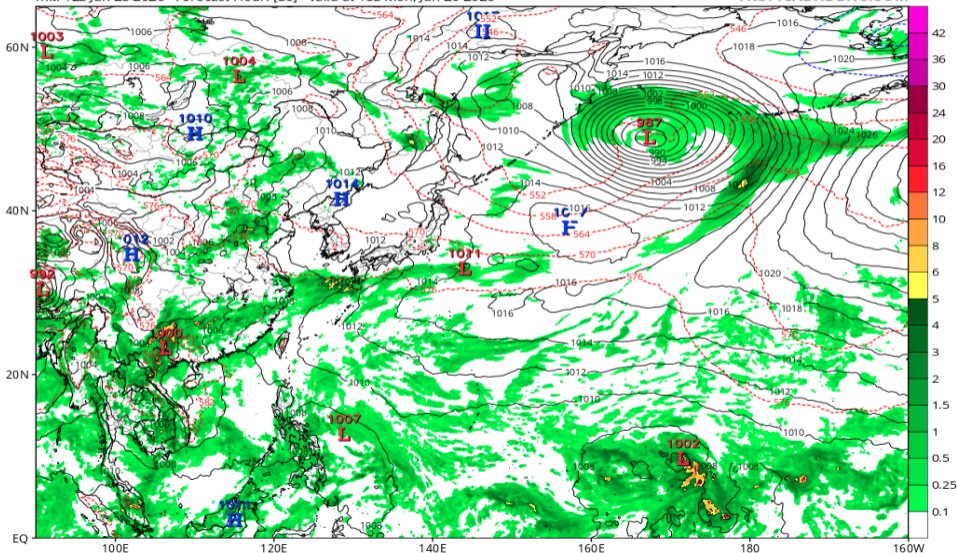


# 地上気圧配置 (GFS 06/29 18Z 予報)

GFS 6-hour Averaged Precip Rate (mm/hr), MSLP (hPa) & 1000-500mb Thickness (dam)

Init: 12z Jun 28 2026 Forecast Hour: [30] valid at 18z Mon, Jun 29 2026

TROPICALTIDBITS.COM

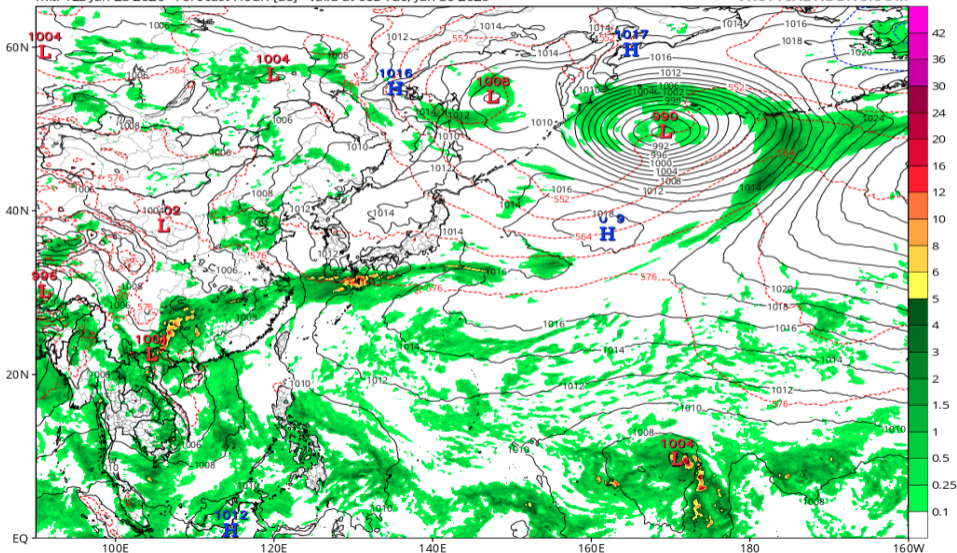


# 地上気圧配置 (GFS 06/30 00Z 予報)

GFS 6-hour Averaged Precip Rate (mm/hr), MSLP (hPa) & 1000-500mb Thickness (dam)

Init: 12z Jun 28 2026 Forecast Hour: [36] valid at 00z Tue, Jun 30 2026

TROPICALTIDBITS.COM

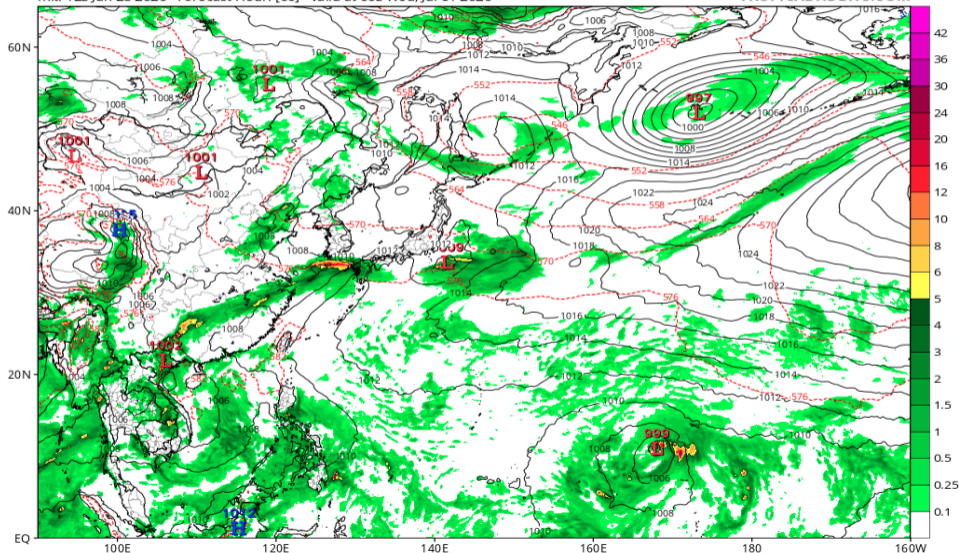


# 地上気圧配置 (GFS 07/01 00Z 予報)

GFS 6-hour Averaged Precip Rate (mm/hr), MSLP (hPa) & 1000-500mb Thickness (dam)

Init: 12z Jun 28 2026 Forecast Hour: [60] valid at 00z Wed, Jul 01 2026

TROPICALTIDBITS.COM

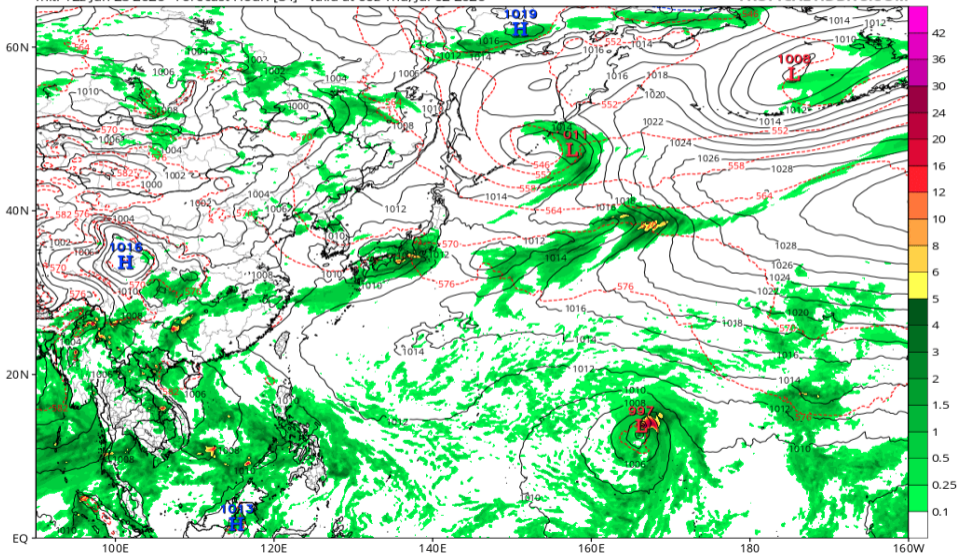


# 地上気圧配置 (GFS 07/02 00Z 予報)

GFS 6-hour Averaged Precip Rate (mm/hr), MSLP (hPa) & 1000-500mb Thickness (dam)

Init: 12z Jun 28 2026 Forecast Hour: [84] valid at 00z Thu, Jul 02 2026

TROPICALTIDBITS.COM

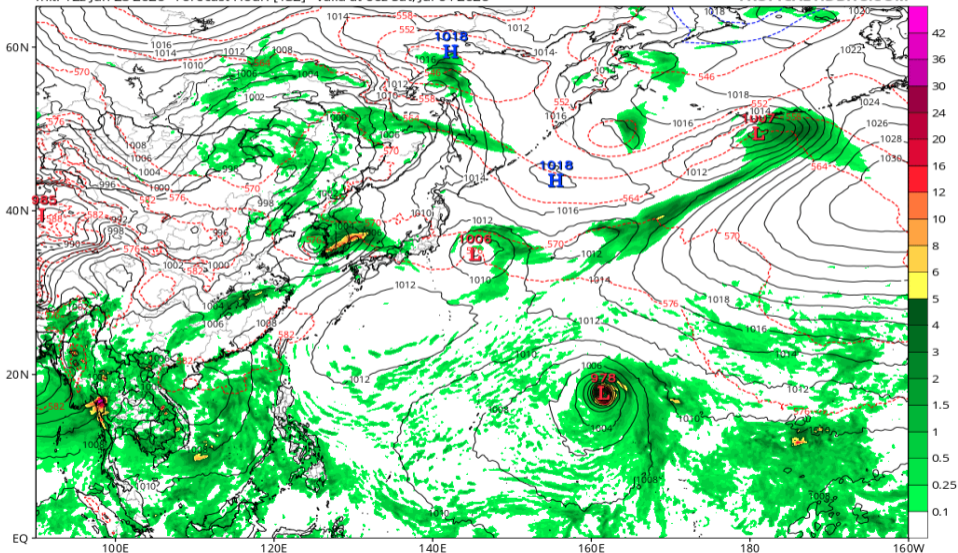


# 地上気圧配置 (GFS 07/04 00Z 予報)

GFS 6-hour Averaged Precip Rate (mm/hr), MSLP (hPa) & 1000-500mb Thickness (dam)

Init: 12z Jun 28 2026 Forecast Hour: [132] valid at 00z Sat, Jul 04 2026

TROPICALTIDBITS.COM



No Figure

No Figure

No Figure

No Figure

No Figure

No Figure

No Figure

No Figure

No Figure

No Figure

No Figure

No Figure

No Figure

No Figure

No Figure

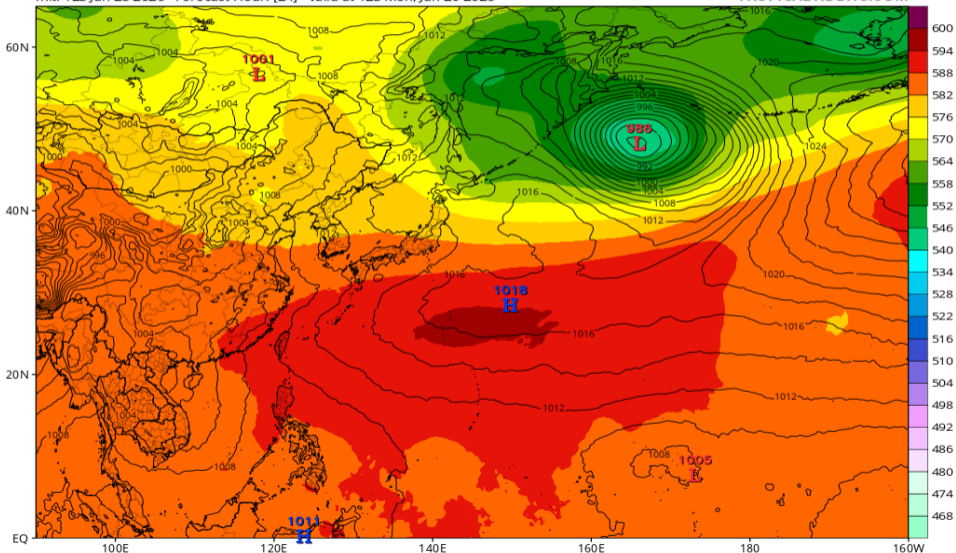
No Figure

# Z500/地上気圧配置 (GFS 06/29 12Z 予報)

GFS 500mb Geopotential Height (dam) & MSLP (mb)

Init: 12z Jun 28 2026 Forecast Hour: [24] valid at 12z Mon, Jun 29 2026

TROPICALTIDBITS.COM

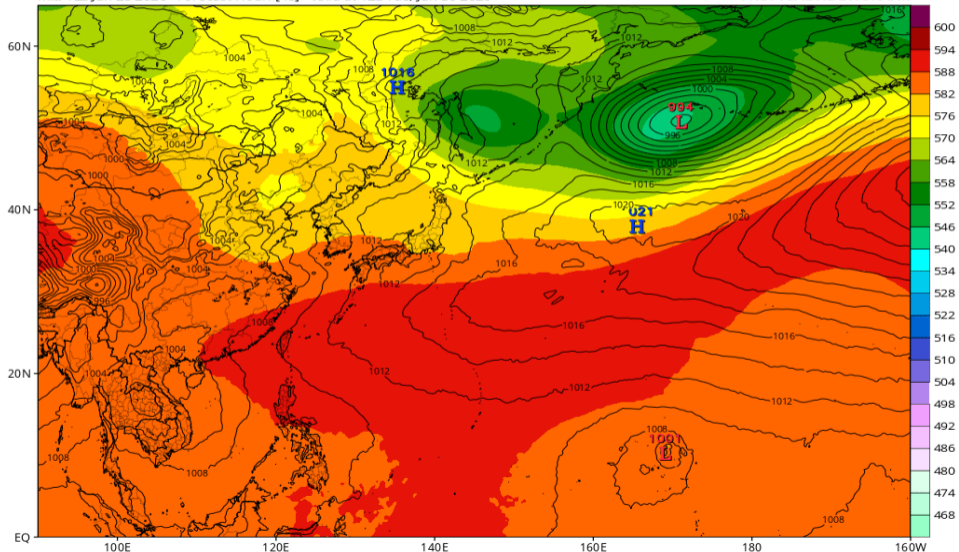


# Z500/地上気圧配置 (GFS 06/30 12Z 予報)

GFS 500mb Geopotential Height (dam) & MSLP (mb)

Init: 12z Jun 28 2026 Forecast Hour: [48] valid at 12z Tue, Jun 30 2026

TROPICALTIDBITS.COM

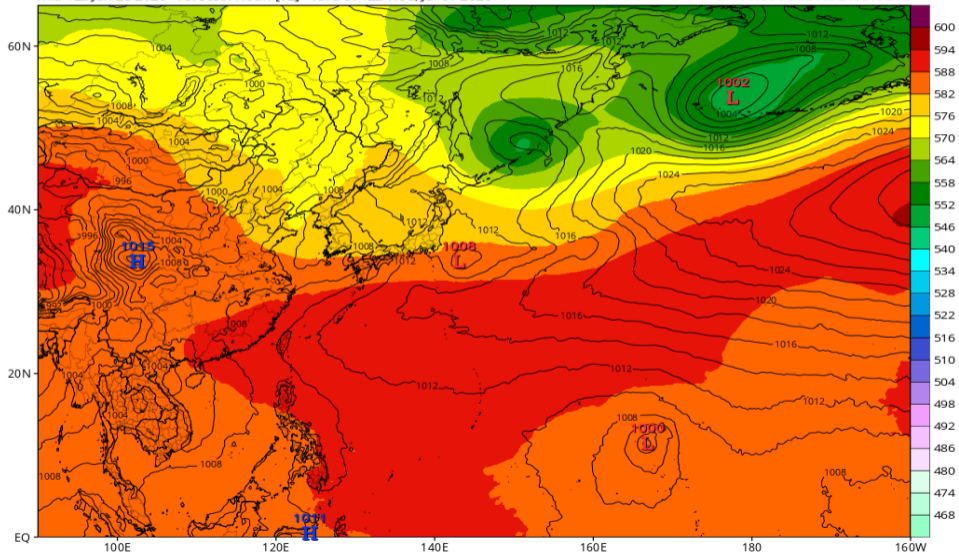


# Z500/地上気圧配置 (GFS 07/01 12Z 予報)

GFS 500mb Geopotential Height (dam) & MSLP (mb)

Init: 12z Jun 28 2026 Forecast Hour: [72] valid at 12z Wed, Jul 01 2026

TROPICALTIDBITS.COM

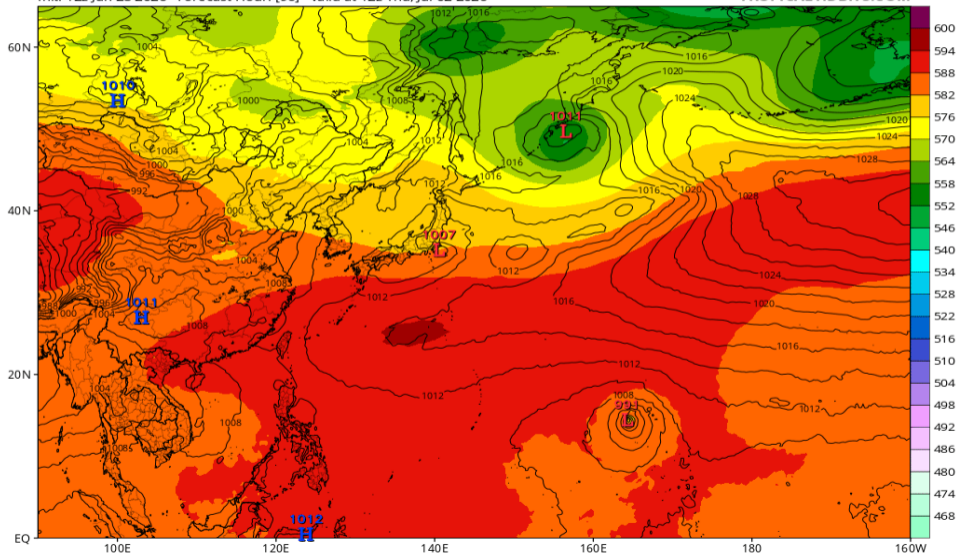


# Z500/地上気圧配置 (GFS 07/02 12Z 予報)

GFS 500mb Geopotential Height (dam) & MSLP (mb)

Init: 12z Jun 28 2026 Forecast Hour: [96] valid at 12z Thu, Jul 02 2026

TROPICALTIDBITS.COM

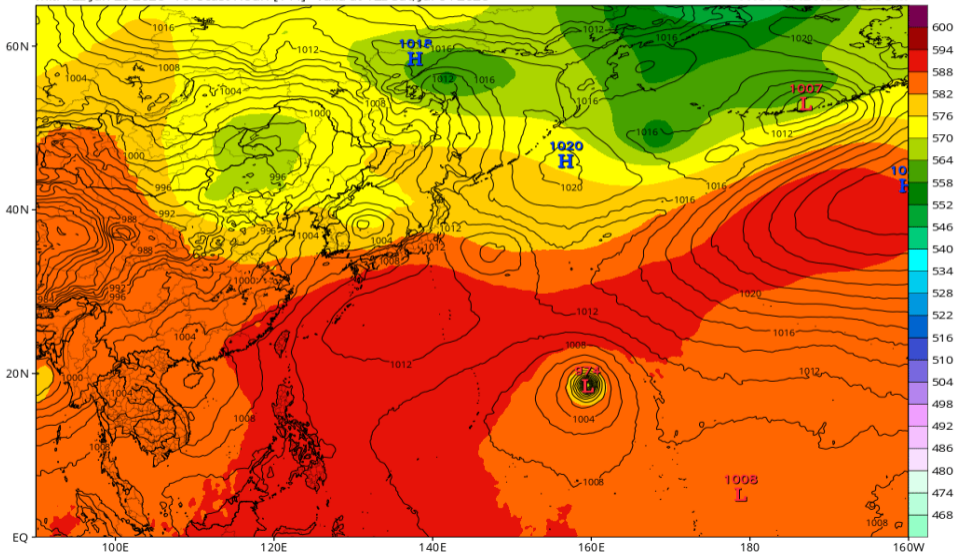


# Z500/地上気圧配置 (GFS 07/04 12Z 予報)

GFS 500mb Geopotential Height (dam) & MSLP (mb)

Init: 12z Jun 28 2026 Forecast Hour: [144] valid at 12z Sat, Jul 04 2026

TROPICALTIDBITS.COM



No Figure

No Figure

No Figure

No Figure

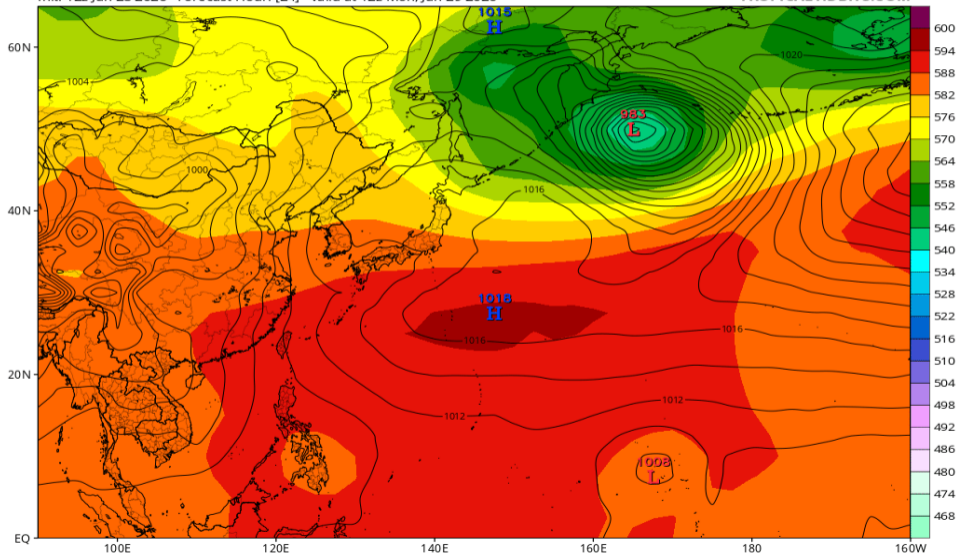
No Figure

# Z500/地上気圧配置 (JMA-GSM 06/29 12Z 予報)

JMA 500mb Geopotential Height (dam) & MSLP (mb)

Init: 12z Jun 28 2026 Forecast Hour: [24] valid at 12z Mon, Jun 29 2026

TROPICALTIDBITS.COM

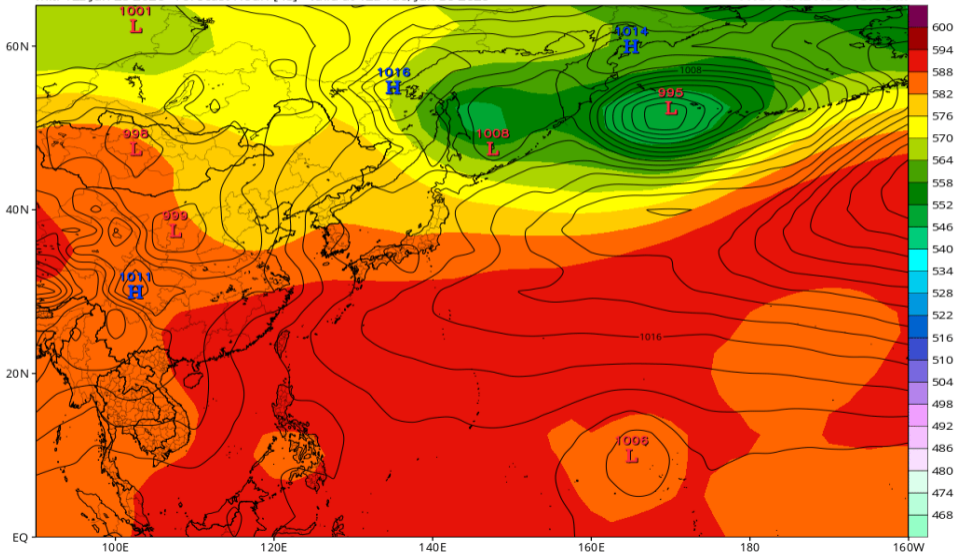


# Z500/地上気圧配置 (JMA-GSM 06/30 12Z 予報)

JMA 500mb Geopotential Height (dam) & MSLP (mb)

Init: 12z Jun 28 2026 Forecast Hour: [48] valid at 12z Tue, Jun 30 2026

TROPICALTIDBITS.COM

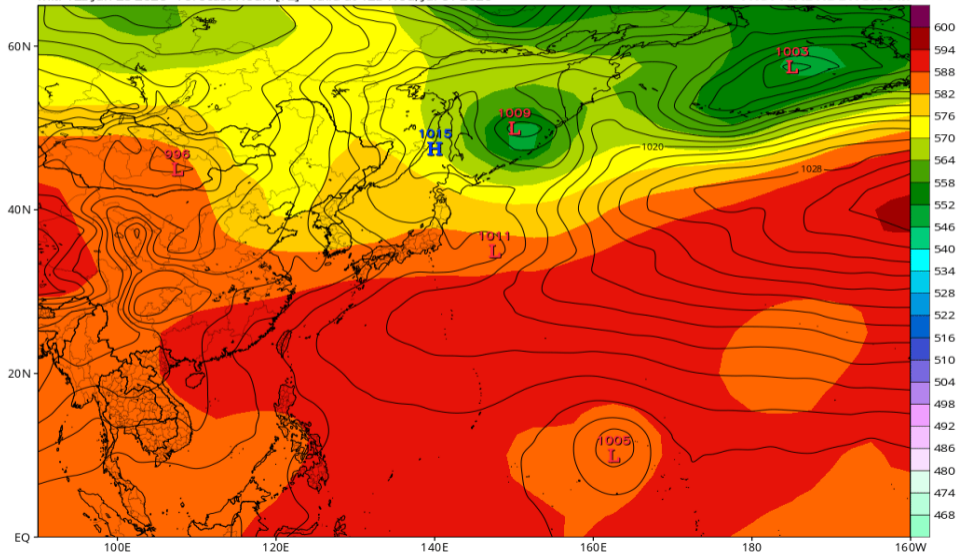


# Z500/地上気圧配置 (JMA-GSM 07/01 12Z 予報)

JMA 500mb Geopotential Height (dam) & MSLP (mb)

Init: 12z Jun 28 2026 Forecast Hour: [72] valid at 12z Wed, Jul 01 2026

TROPICALTIDBITS.COM

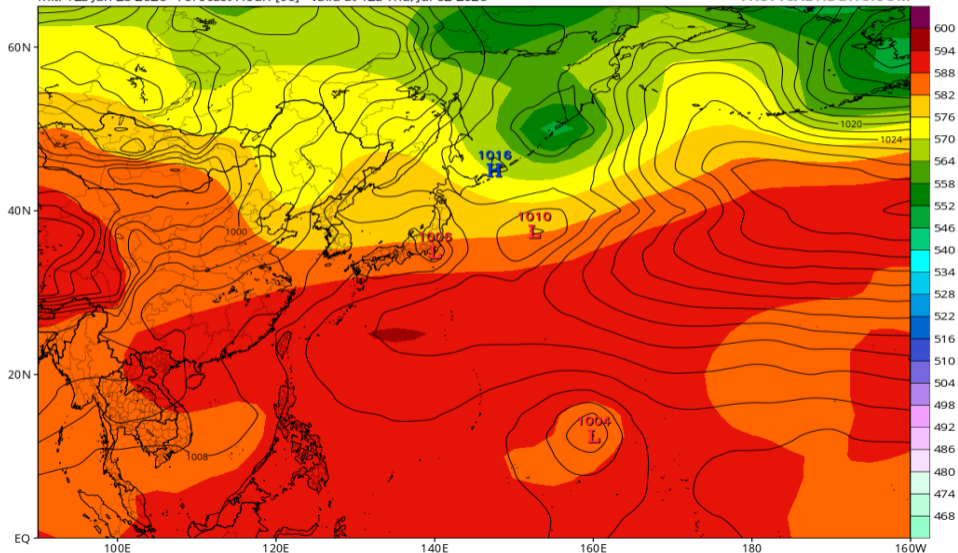


# Z500/地上気圧配置 (JMA-GSM 07/02 12Z 予報)

JMA 500mb Geopotential Height (dam) & MSLP (mb)

Init: 12z Jun 28 2026 Forecast Hour: [96] valid at 12z Thu, Jul 02 2026

TROPICALTIDBITS.COM

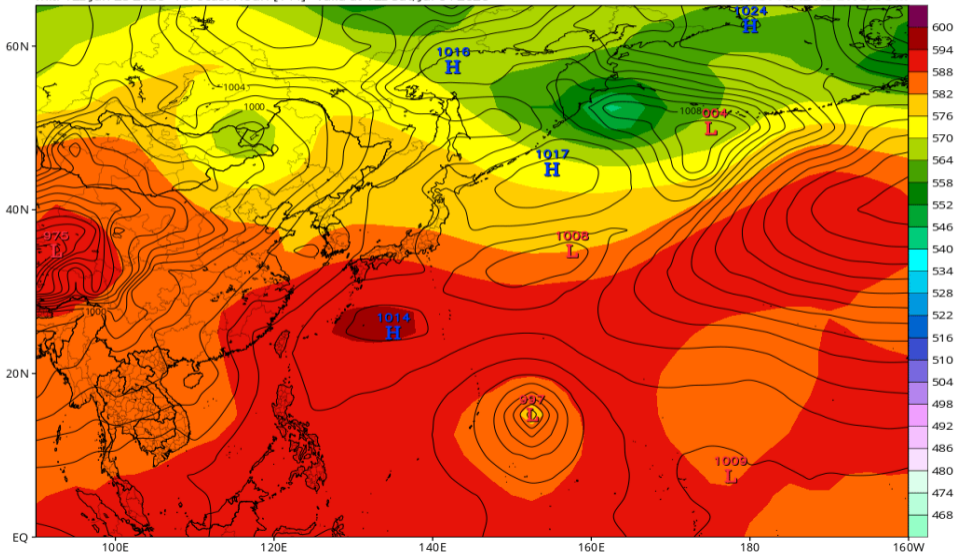


# Z500/地上気圧配置 (JMA-GSM 07/04 12Z 予報)

JMA 500mb Geopotential Height (dam) & MSLP (mb)

Init: 12z Jun 28 2026 Forecast Hour: [144] valid at 12z Sat, Jul 04 2026

TROPICALTIDBITS.COM



No Figure

No Figure

No Figure

No Figure

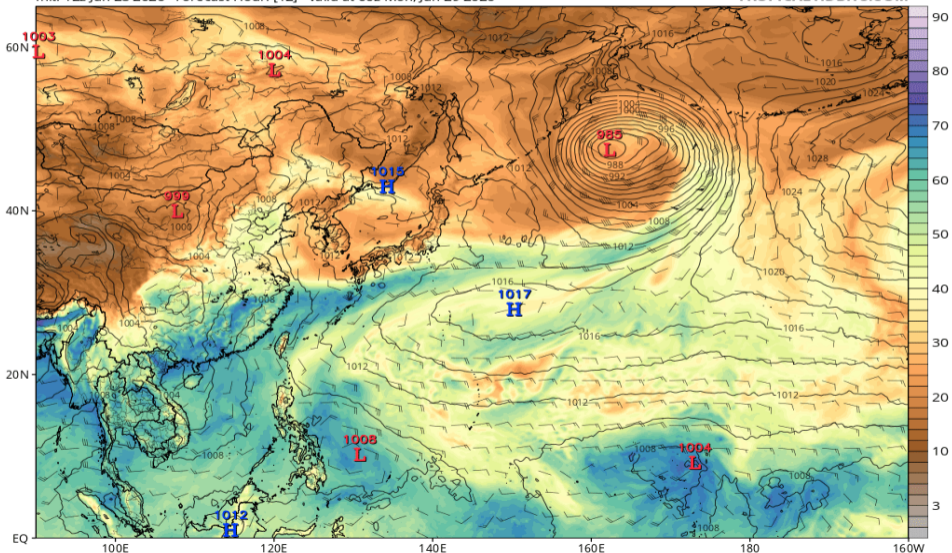
No Figure

# 可降水量 (GFS 06/29 00Z 予報)

GFS MSLP (mb), Total Precipitable Water (mm), and 850mb Wind (kt)

Init: 12z Jun 28 2026 Forecast Hour: [12] valid at 00z Mon, Jun 29 2026

TROPICALTIDBITS.COM

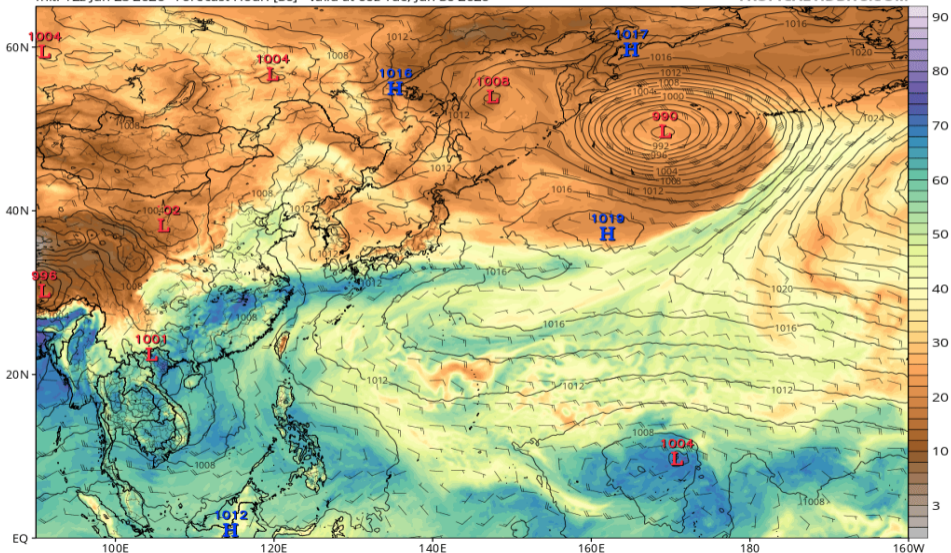


# 可降水量 (GFS 06/30 00Z 予報)

GFS MSLP (mb), Total Precipitable Water (mm), and 850mb Wind (kt)

Init: 12z Jun 28 2026 Forecast Hour: [36] valid at 00z Tue, Jun 30 2026

TROPICALTIDBITS.COM

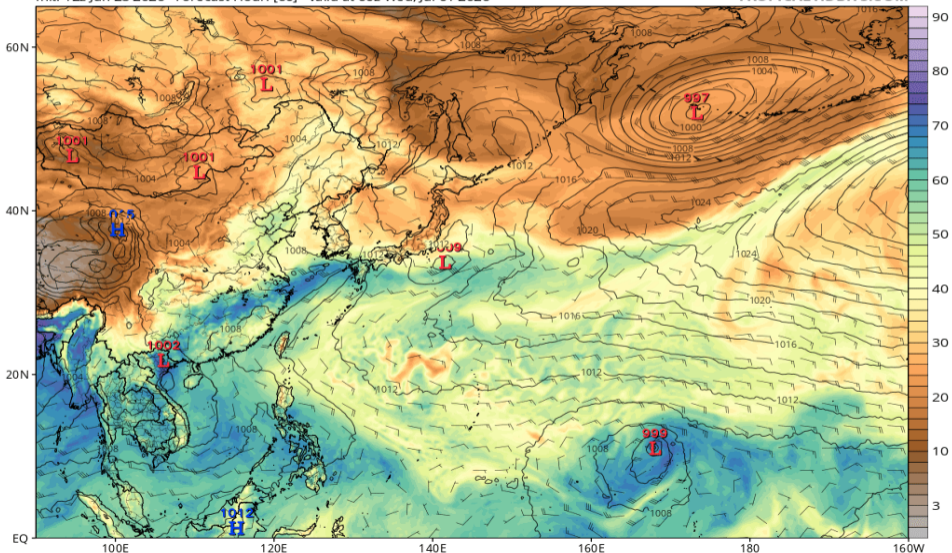


# 可降水量 (GFS 07/01 00Z 予報)

GFS MSLP (mb), Total Precipitable Water (mm), and 850mb Wind (kt)

Init: 12z Jun 28 2026 Forecast Hour: [60] valid at 00z Wed, Jul 01 2026

TROPICALTIDBITS.COM

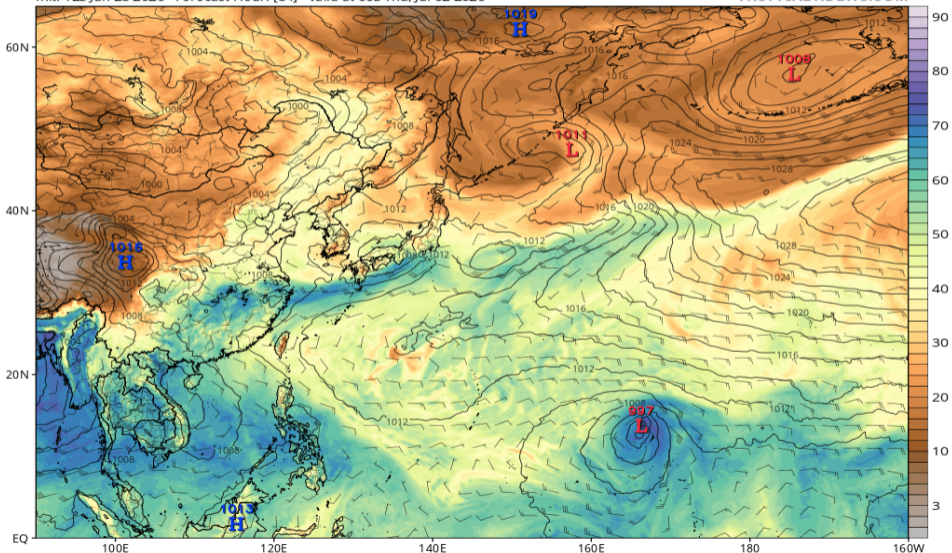


# 可降水量 (GFS 07/02 00Z 予報)

GFS MSLP (mb), Total Precipitable Water (mm), and 850mb Wind (kt)

Init: 12z Jun 28 2026 Forecast Hour: [84] valid at 00z Thu, Jul 02 2026

TROPICALTIDBITS.COM

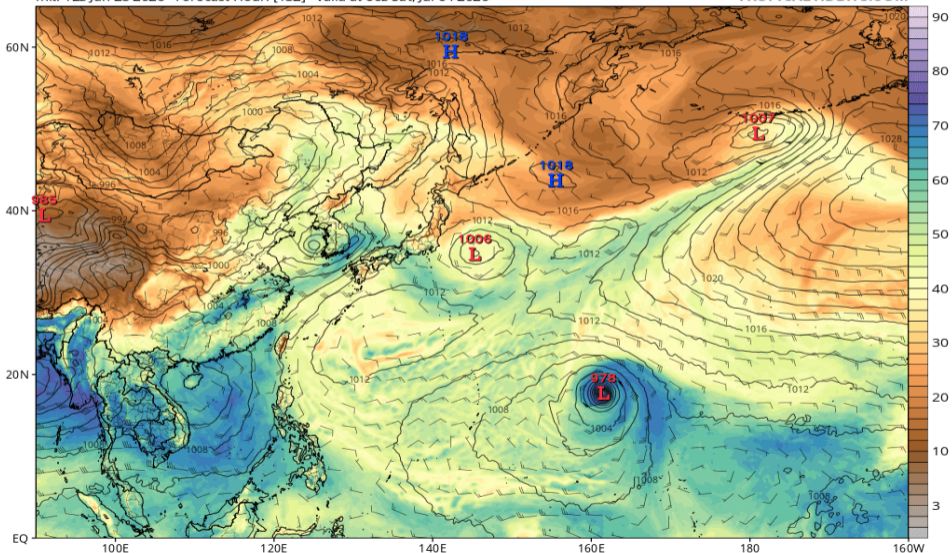


# 可降水量 (GFS 07/04 00Z 予報)

GFS MSLP (mb), Total Precipitable Water (mm), and 850mb Wind (kt)

Init: 12z Jun 28 2026 Forecast Hour: [132] valid at 00z Sat, Jul 04 2026

TROPICALTIDBITS.COM



No Figure

No Figure

No Figure

No Figure

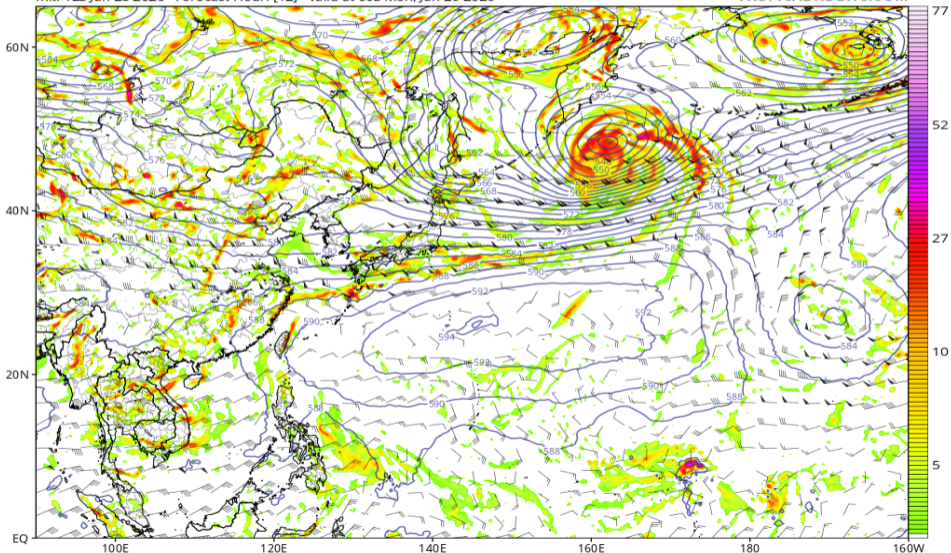
No Figure

# 渦度 850, Z500, UV200 (GFS 06/29 00Z 予報)

GFS 850 hPa Cyclonic Vorticity ( $10^5 \text{ s}^{-1}$ ), 500 hPa Height (dam), and 200 hPa Wind (kt)

Init: 12z Jun 28 2026 Forecast Hour: [12] valid at 00z Mon, Jun 29 2026

TROPICALTIDBITS.COM

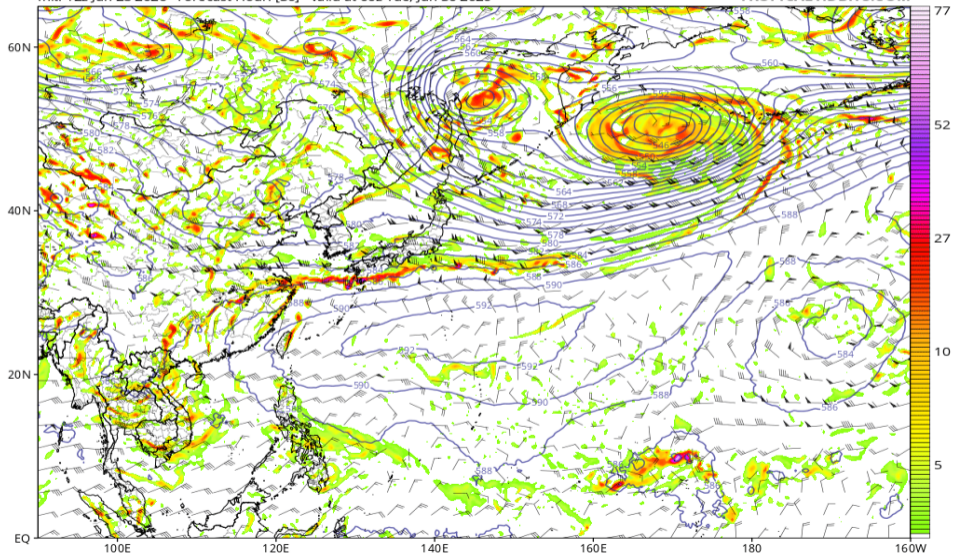


# 渦度 850, Z500, UV200 (GFS 06/30 00Z 予報)

GFS 850 hPa Cyclonic Vorticity ( $10^5 \text{ s}^{-1}$ ), 500 hPa Height (dam), and 200 hPa Wind (kt)

Init: 12z Jun 28 2026 Forecast Hour: [36] valid at 00z Tue, Jun 30 2026

TROPICALTIDBITS.COM

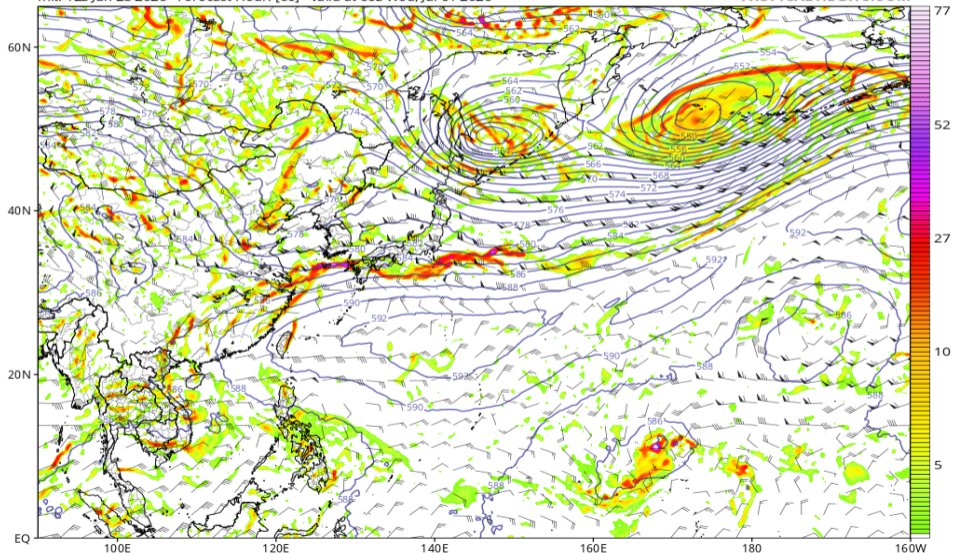


# 渦度 850, Z500, UV200 (GFS 07/01 00Z 予報)

GFS 850 hPa Cyclonic Vorticity ( $10^5 \text{ s}^{-1}$ ), 500 hPa Height (dam), and 200 hPa Wind (kt)

Init: 12z Jun 28 2026 Forecast Hour: [60] valid at 00z Wed, Jul 01 2026

TROPICALTIDBITS.COM

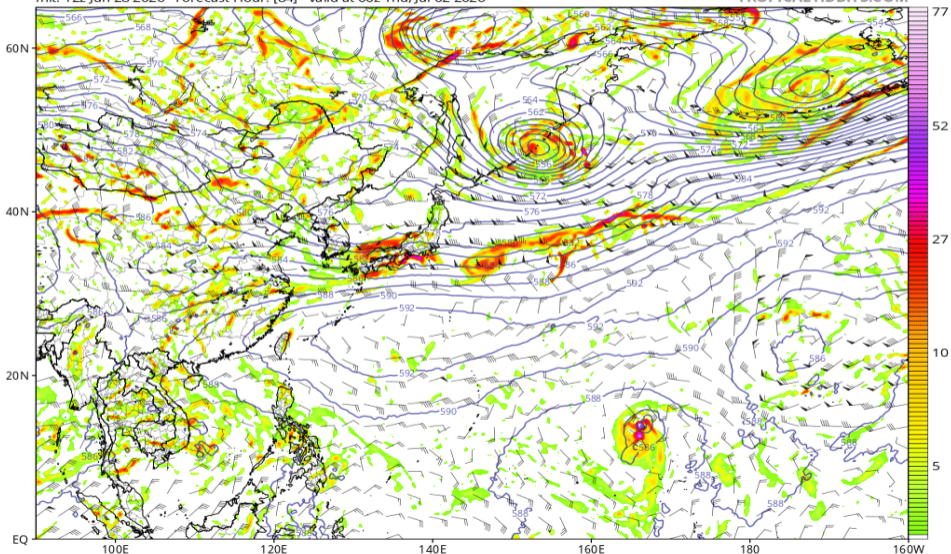


# 渦度 850, Z500, UV200 (GFS 07/02 00Z 予報)

GFS 850 hPa Cyclonic Vorticity ( $10^5 \text{ s}^{-1}$ ), 500 hPa Height (dam), and 200 hPa Wind (kt)

Init: 12z Jun 28 2026 Forecast Hour: [84] valid at 00z Thu, Jul 02 2026

TROPICALTIDBITS.COM

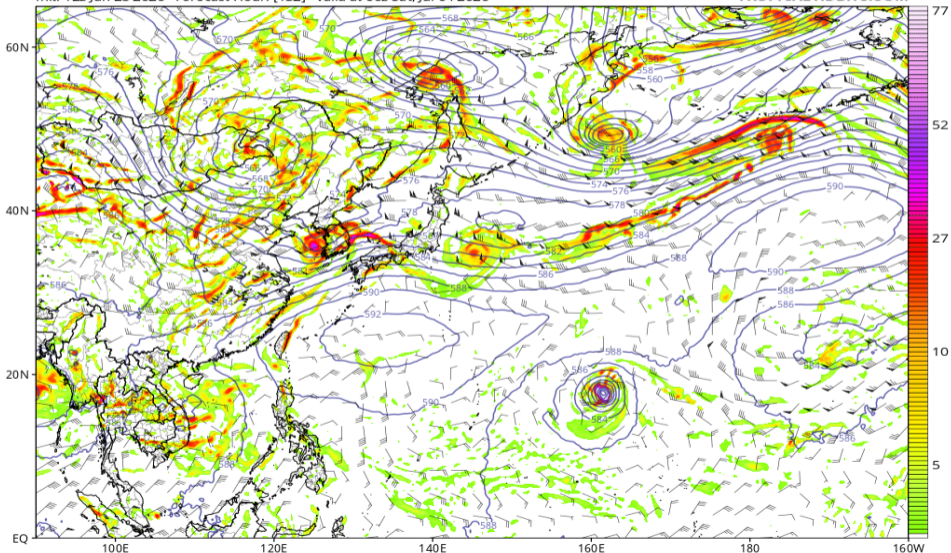


# 渦度 850, Z500, UV200 (GFS 07/04 00Z 予報)

GFS 850 hPa Cyclonic Vorticity ( $10^5 \text{ s}^{-1}$ ), 500 hPa Height (dam), and 200 hPa Wind (kt)

Init: 12z Jun 28 2026 Forecast Hour: [132] valid at 00z Sat, Jul 04 2026

TROPICALTIDBITS.COM

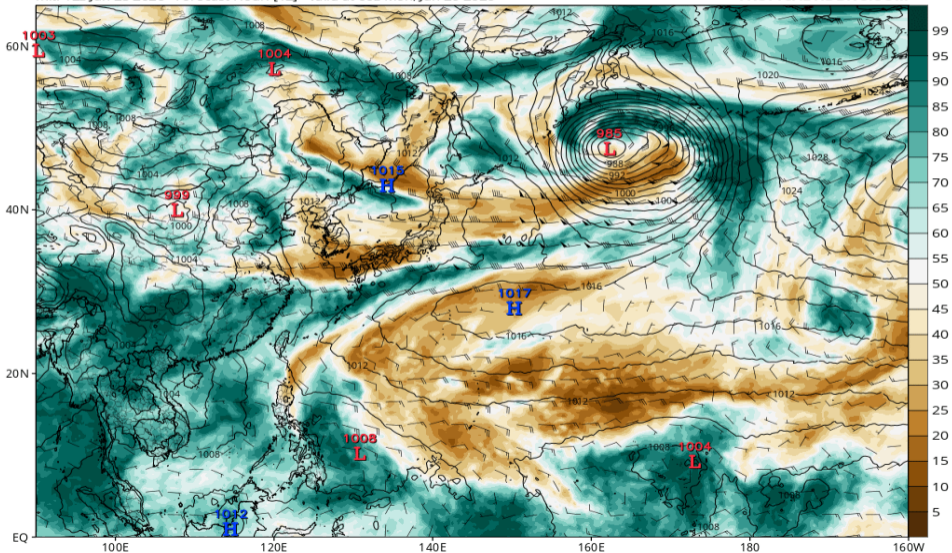


# RH700-300 (GFS 06/29 00Z 予報)

GFS MSLP (mb), 700-300 hPa Relative Humidity (%), and 700-300 hPa Wind (kt)

Init: 12z Jun 28 2026 Forecast Hour: [12] valid at 00z Mon, Jun 29 2026

TROPICALTIDBITS.COM

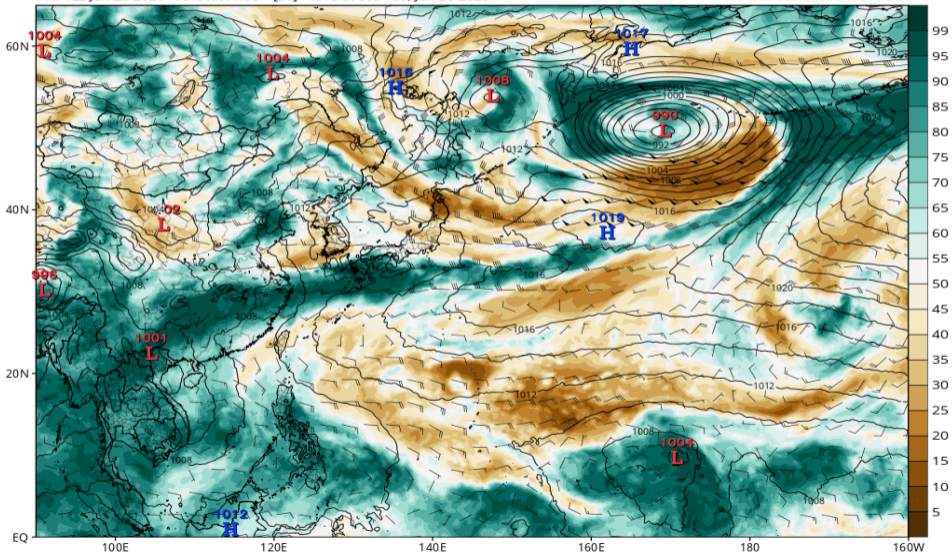


# RH700-300 (GFS 06/30 00Z 予報)

GFS MSLP (mb), 700-300 hPa Relative Humidity (%), and 700-300 hPa Wind (kt)

Init: 12z Jun 28 2026 Forecast Hour: [36] valid at 00z Tue, Jun 30 2026

TROPICALTIDBITS.COM

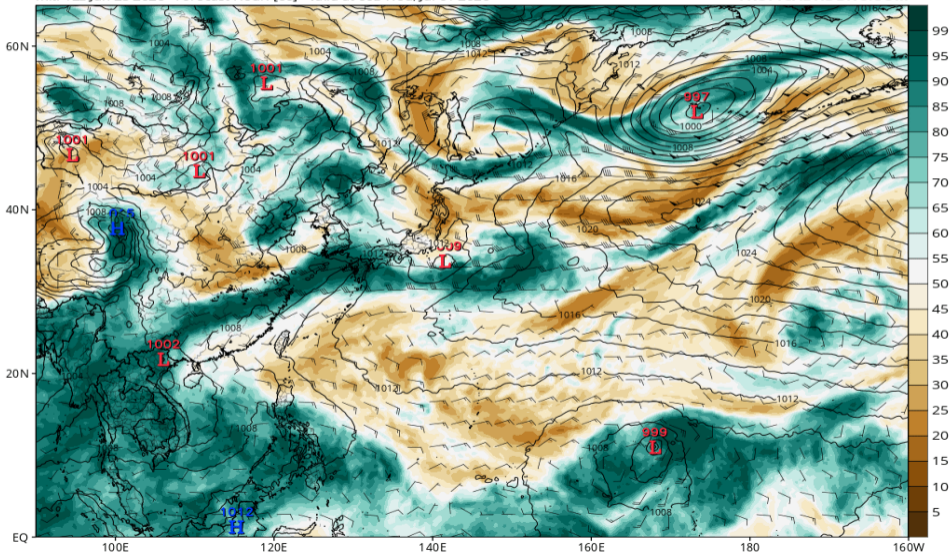


# RH700-300 (GFS 07/01 00Z 予報)

GFS MSLP (mb), 700-300 hPa Relative Humidity (%), and 700-300 hPa Wind (kt)

Init: 12z Jun 28 2026 Forecast Hour: [60] valid at 00z Wed, Jul 01 2026

TROPICALTIDBITS.COM

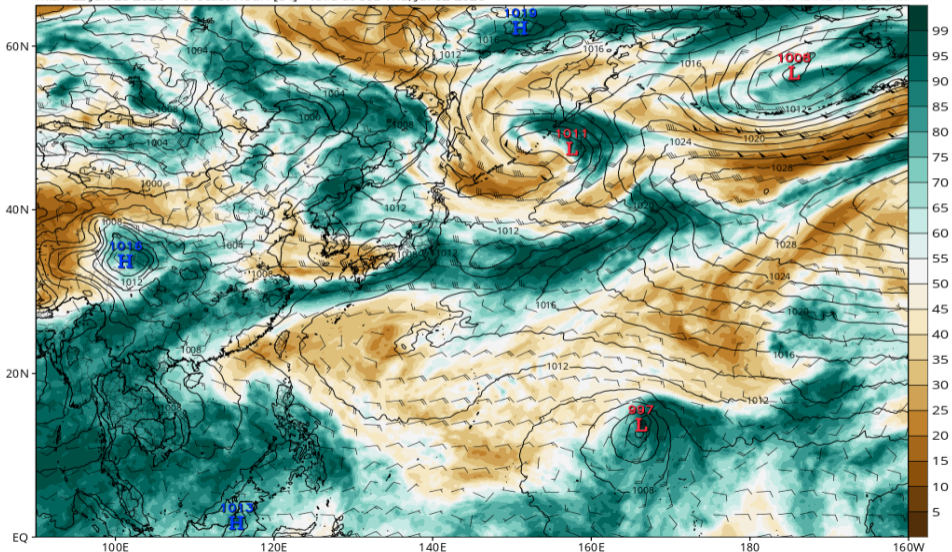


# RH700-300 (GFS 07/02 00Z 予報)

GFS MSLP (mb), 700-300 hPa Relative Humidity (%), and 700-300 hPa Wind (kt)

Init: 12z Jun 28 2026 Forecast Hour: [84] valid at 00z Thu, Jul 02 2026

TROPICALTIDBITS.COM

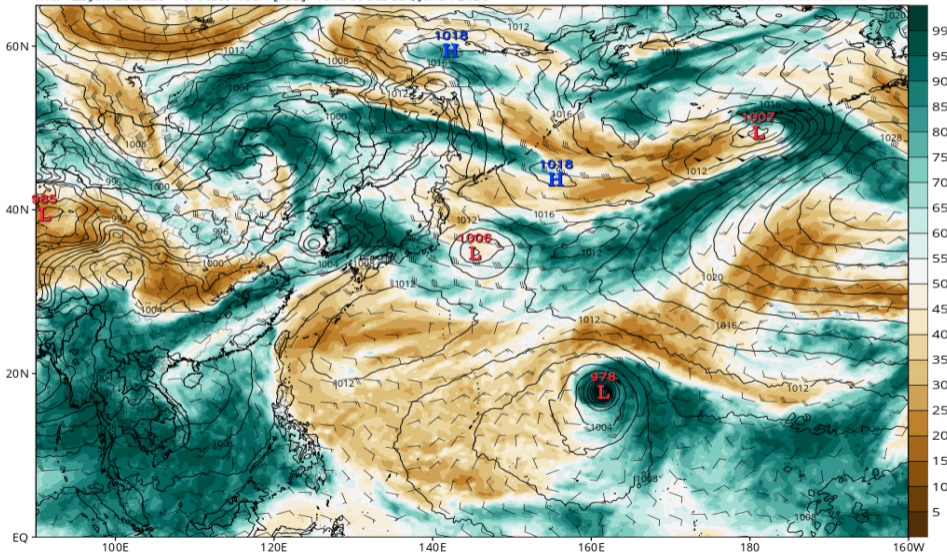


# RH700-300 (GFS 07/04 00Z 予報)

GFS MSLP (mb), 700-300 hPa Relative Humidity (%), and 700-300 hPa Wind (kt)

Init: 12z Jun 28 2026 Forecast Hour: [132] valid at 00z Sat, Jul 04 2026

TROPICALTIDBITS.COM



No Figure

No Figure

No Figure

No Figure

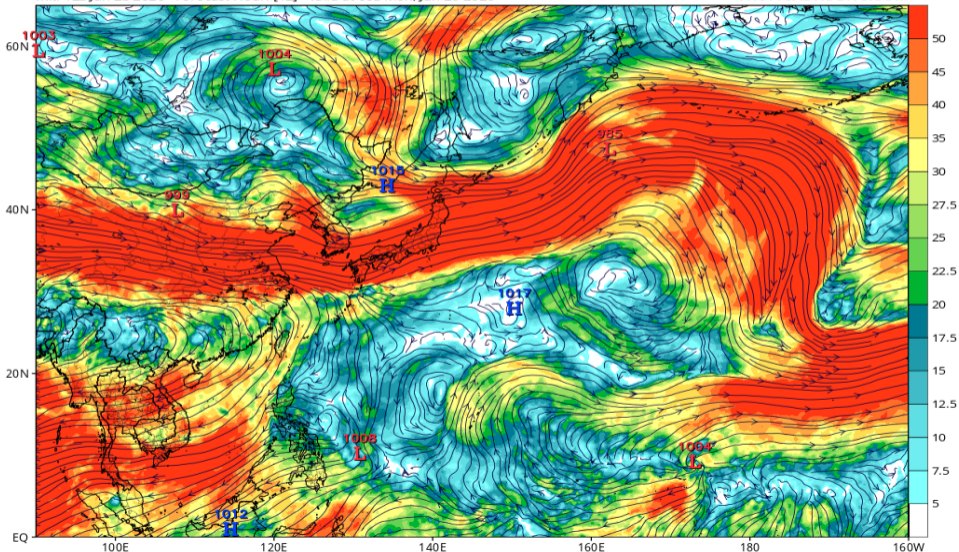
No Figure

# Wshear850-200 (GFS 06/29 00Z 予報)

GFS 200mb-850mb Wind Shear (knots) & Low Centers (mb)

Init: 12z Jun 28 2026 Forecast Hour: [12] valid at 00z Mon, Jun 29 2026

TROPICALTIDBITS.COM

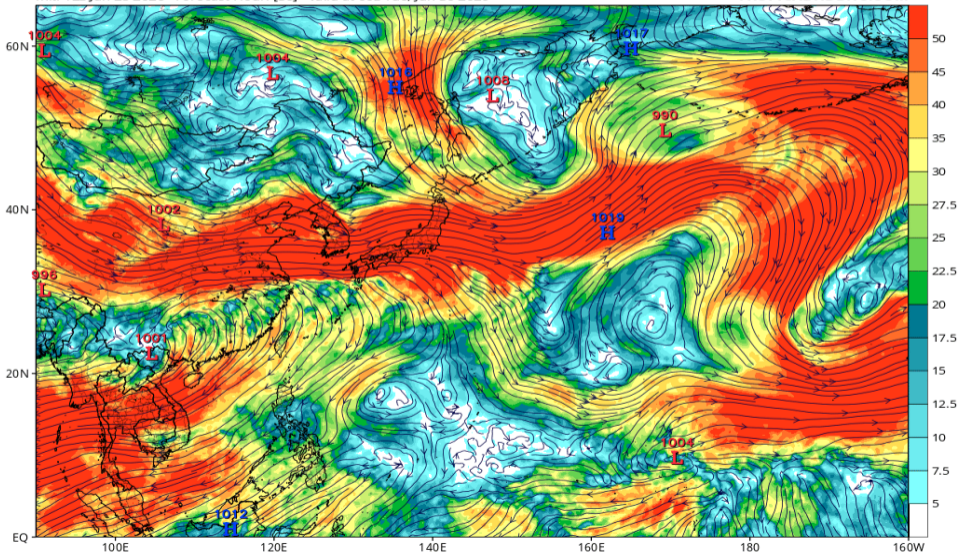


# Wshear850-200 (GFS 06/30 00Z 予報)

GFS 200mb-850mb Wind Shear (knots) & Low Centers (mb)

Init: 12z Jun 28 2026 Forecast Hour: [36] valid at 00z Tue, Jun 30 2026

TROPICALTIDBITS.COM

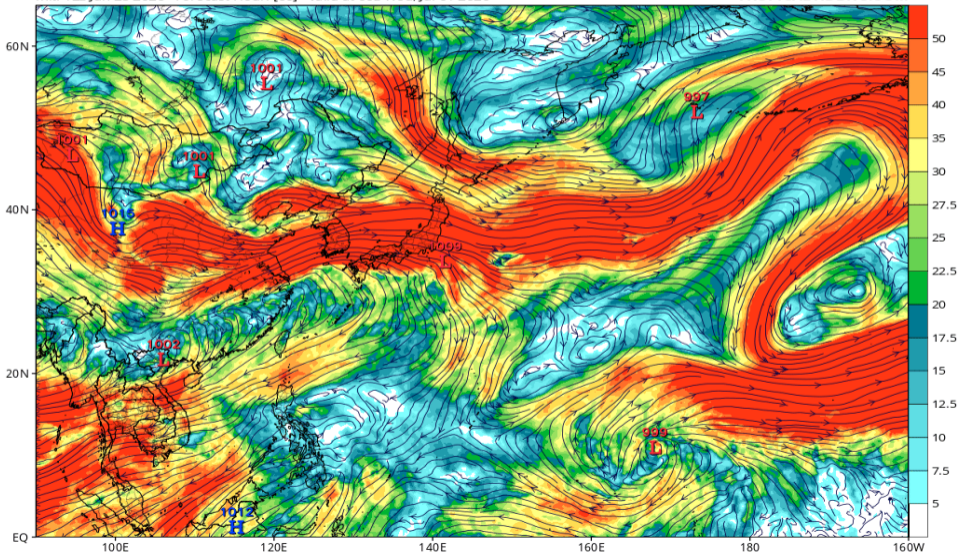


# Wshear850-200 (GFS 07/01 00Z 予報)

GFS 200mb-850mb Wind Shear (knots) & Low Centers (mb)

Init: 12z Jun 28 2026 Forecast Hour: [60] valid at 00z Wed, Jul 01 2026

TROPICALTIDBITS.COM

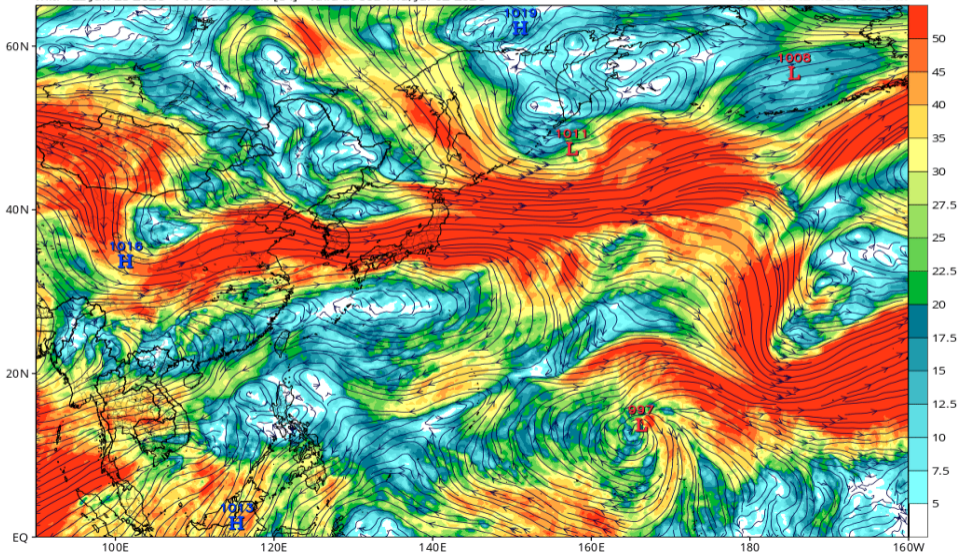


# Wshear850-200 (GFS 07/02 00Z 予報)

GFS 200mb-850mb Wind Shear (knots) & Low Centers (mb)

Init: 12z Jun 28 2026 Forecast Hour: [84] valid at 00z Thu, Jul 02 2026

TROPICALTIDBITS.COM

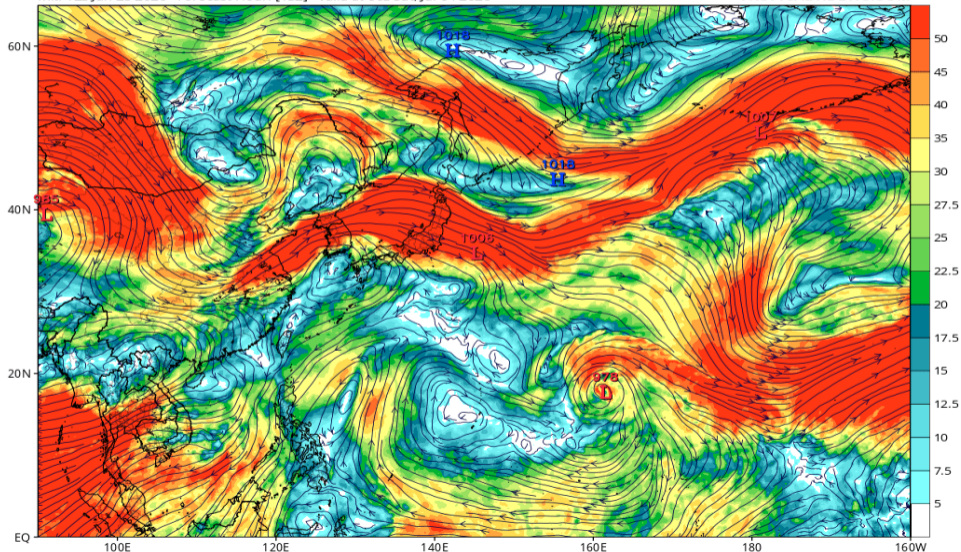


# Wshear850-200 (GFS 07/04 00Z 予報)

GFS 200mb-850mb Wind Shear (knots) & Low Centers (mb)

Init: 12z Jun 28 2026 Forecast Hour: [132] valid at 00z Sat, Jul 04 2026

TROPICALTIDBITS.COM



No Figure

No Figure

No Figure

No Figure

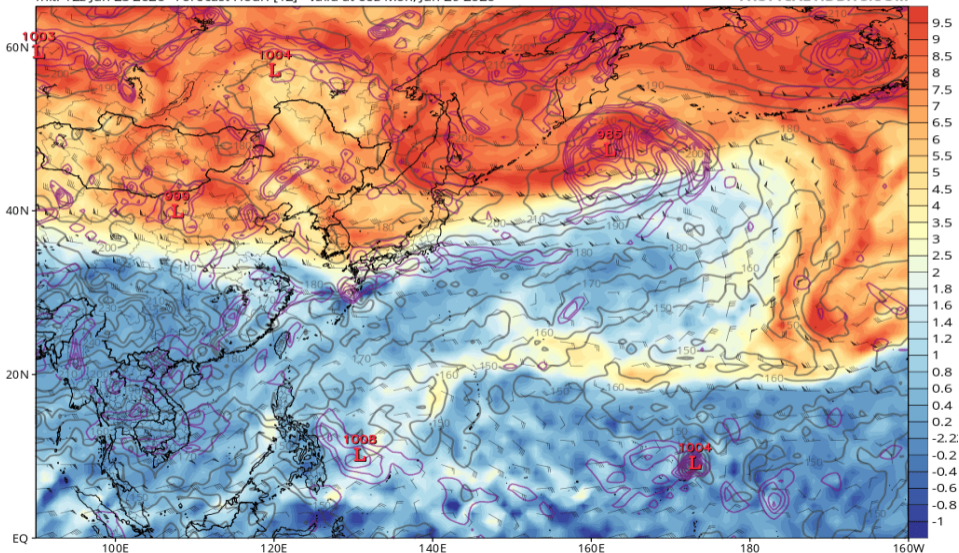
No Figure

# 渦位 355K (GFS 06/29 00Z 予報)

GFS 355K Cyclonic PV (PVU), Wind (kt), Pressure (hPa, gray), & 850 hPa Cyclonic Vorticity (purple) [1.0°x1.0° grid]

Init: 12z Jun 28 2026 Forecast Hour: [12] valid at 00z Mon, Jun 29 2026

TROPICALTIDBITS.COM

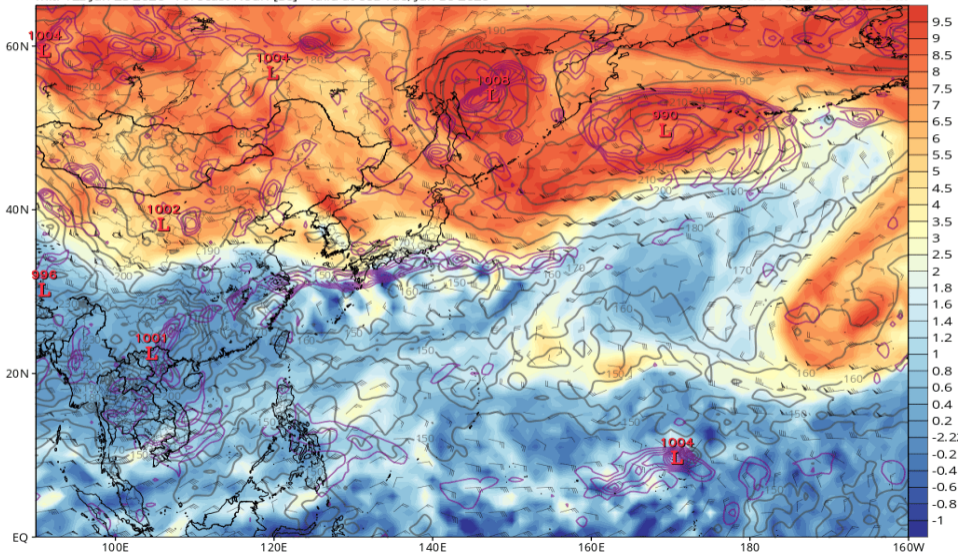


# 渦位 355K (GFS 06/30 00Z 予報)

GFS 355K Cyclonic PV (PVU), Wind (kt), Pressure (hPa, gray), & 850 hPa Cyclonic Vorticity (purple) [1.0°x1.0° grid]

Init: 12z Jun 28 2026 Forecast Hour: [36] valid at 00z Tue, Jun 30 2026

TROPICALTIDBITS.COM



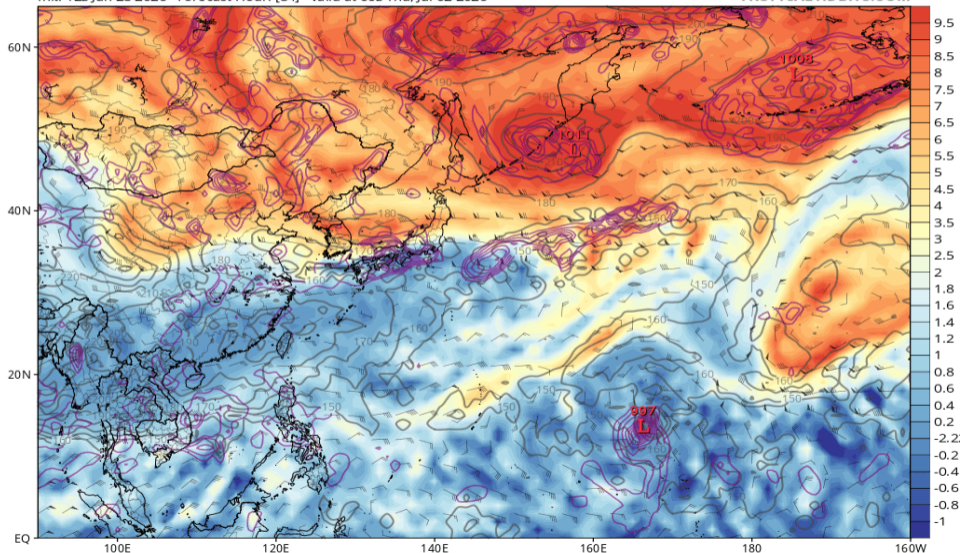


# 渦位 355K (GFS 07/02 00Z 予報)

GFS 355K Cyclonic PV (PVU), Wind (kt), Pressure (hPa, gray), & 850 hPa Cyclonic Vorticity (purple) [1.0°x1.0° grid]

Init: 12z Jun 28 2026 Forecast Hour: [84] valid at 00z Thu, Jul 02 2026

TROPICALTIDBITS.COM

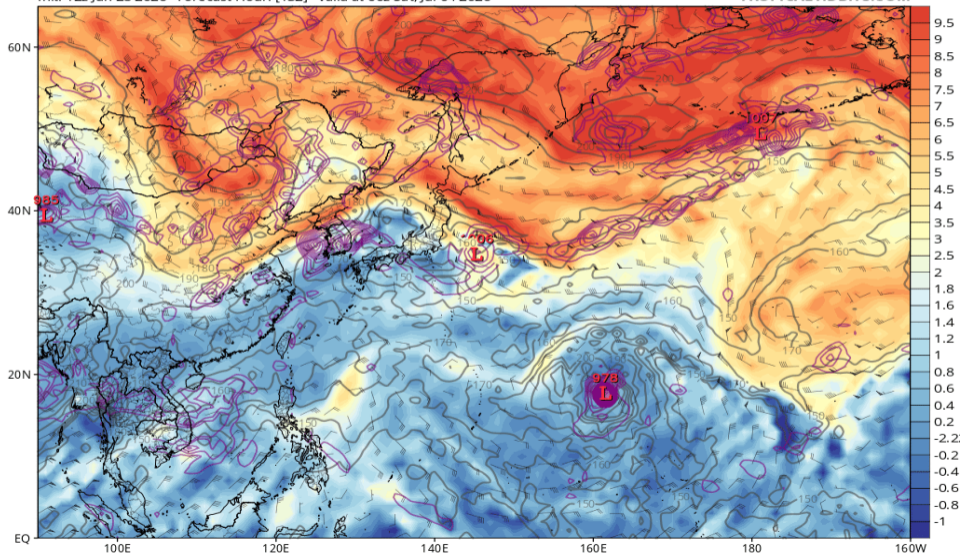


# 渦位 355K (GFS 07/04 00Z 予報)

GFS 355K Cyclonic PV (PVU), Wind (kt), Pressure (hPa, gray), & 850 hPa Cyclonic Vorticity (purple) [1.0°x1.0° grid]

Init: 12z Jun 28 2026 Forecast Hour: [132] valid at 00z Sat, Jul 04 2026

TROPICALTIDBITS.COM



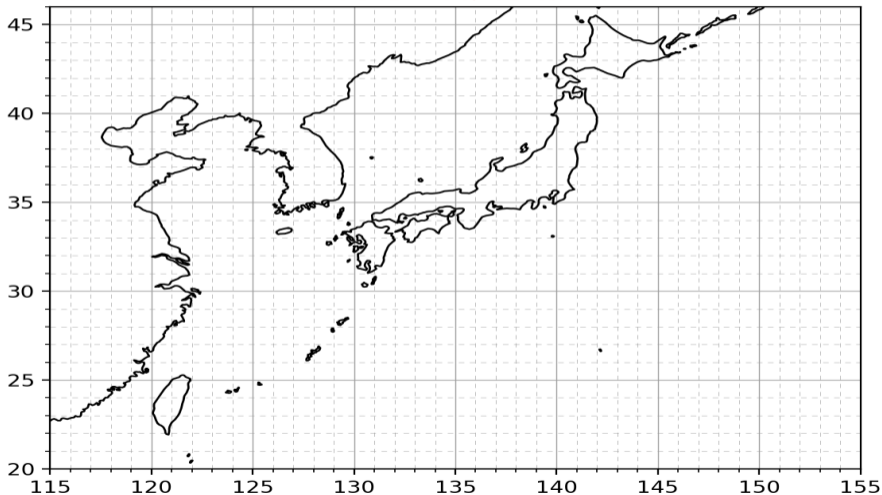
# GrandEns (IFS/AIFS/GFS/AIGFS/GSM 06/29 00Z 予報)

Grand Ensemble

weather-models.info | ECMWF Open Data (CC BY 4.0),  
NOAA data, 気象庁データ (ウェザーマップ社提供)

Init: 2026/06/28 18Z FT: 006h Valid: 2026/06/29 00Z

実際の進路予想は、気象庁の台風予報を利用してください



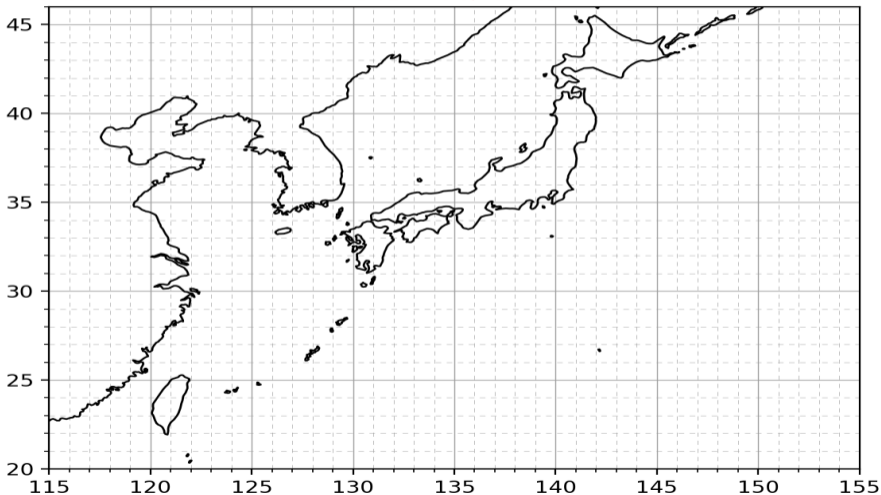
# GrandEns (IFS/AIFS/GFS/AIGFS/GSM 06/30 00Z 予報)

Grand Ensemble

weather-models.info | ECMWF Open Data (CC BY 4.0),  
NOAA data, 気象庁データ (ウェザーマップ社提供)

Init: 2026/06/28 18Z FT: 030h Valid: 2026/06/30 00Z

実際の進路予想は、気象庁の台風予報を利用してください



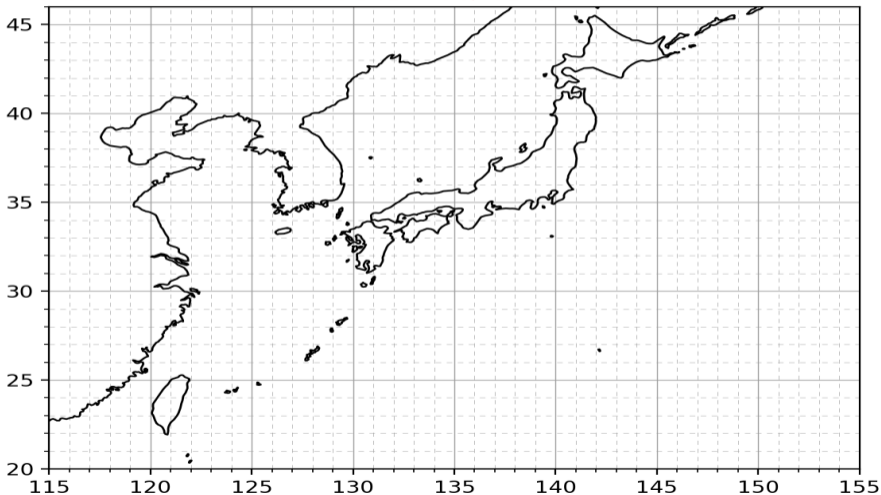
# GrandEns (IFS/AIFS/GFS/AIGFS/GSM 07/01 00Z 予報)

Grand Ensemble

weather-models.info | ECMWF Open Data (CC BY 4.0),  
NOAA data, 気象庁データ (ウェザーマップ社提供)

Init: 2026/06/28 18Z FT: 054h Valid: 2026/07/01 00Z

実際の進路予想は、気象庁の台風予報を利用してください



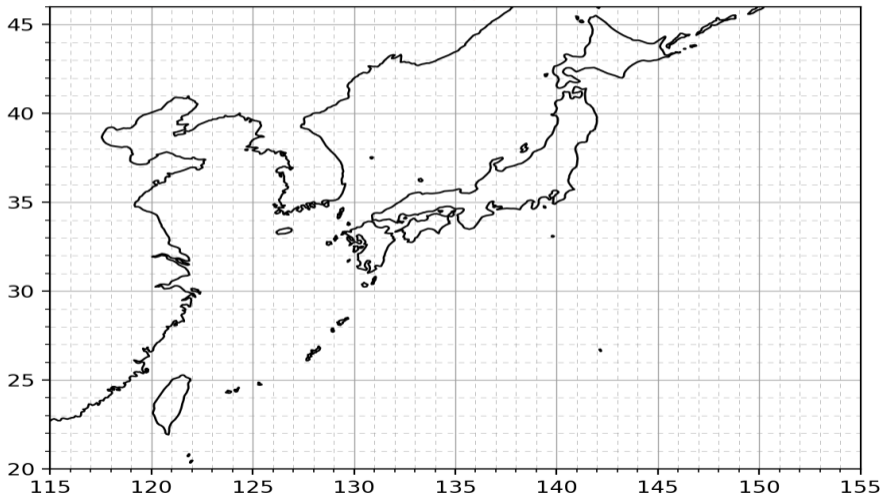
# GrandEns (IFS/AIFS/GFS/AIGFS/GSM 07/02 00Z 予報)

Grand Ensemble

weather-models.info | ECMWF Open Data (CC BY 4.0),  
NOAA data, 気象庁データ (ウェザーマップ社提供)

Init: 2026/06/28 18Z FT: 078h Valid: 2026/07/02 00Z

実際の進路予想は、気象庁の台風予報を利用してください



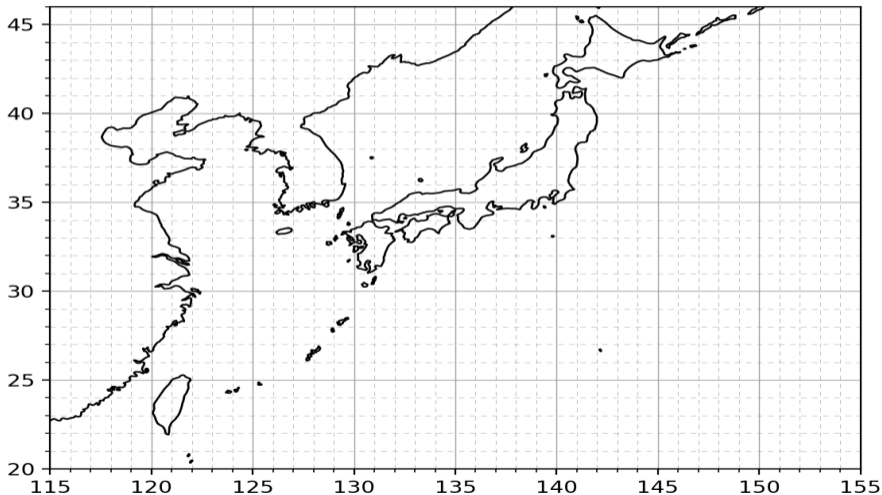
# GrandEns (IFS/AIFS/GFS/AIGFS/GSM 07/03 00Z 予報)

Grand Ensemble

weather-models.info | ECMWF Open Data (CC BY 4.0),  
NOAA data, 気象庁データ (ウェザーマップ社提供)

Init: 2026/06/28 18Z FT: 102h Valid: 2026/07/03 00Z

実際の進路予想は、気象庁の台風予報を利用してください



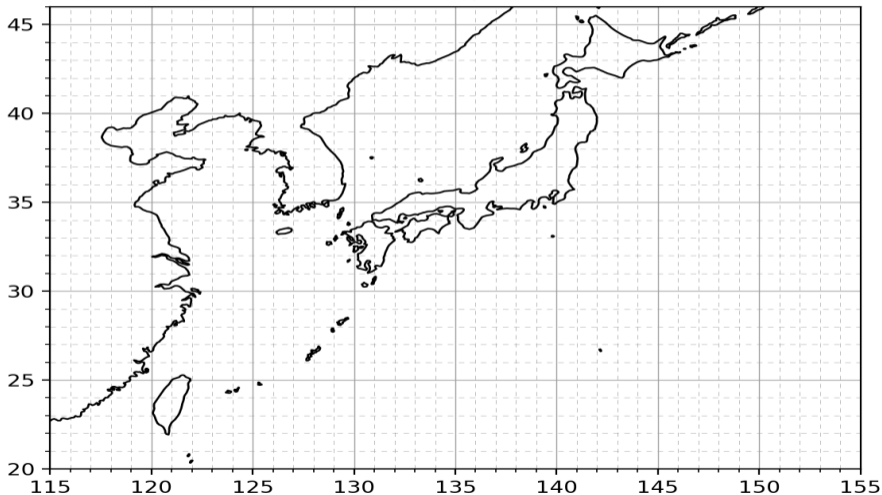
# GrandEns (IFS/AIFS/GFS/AIGFS/GSM 07/04 00Z 予報)

Grand Ensemble

weather-models.info | ECMWF Open Data (CC BY 4.0),  
NOAA data, 気象庁データ (ウェザーマップ社提供)

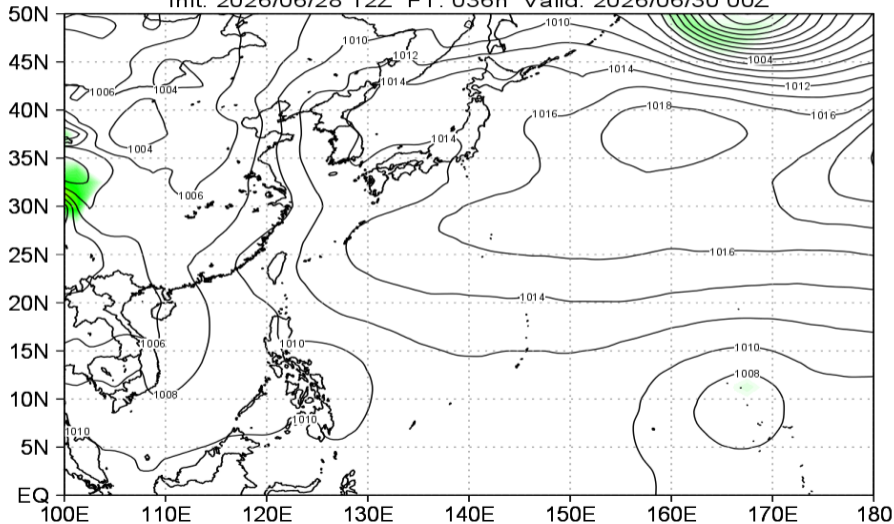
Init: 2026/06/28 18Z FT: 126h Valid: 2026/07/04 00Z

実際の進路予想は、気象庁の台風予報を利用してください



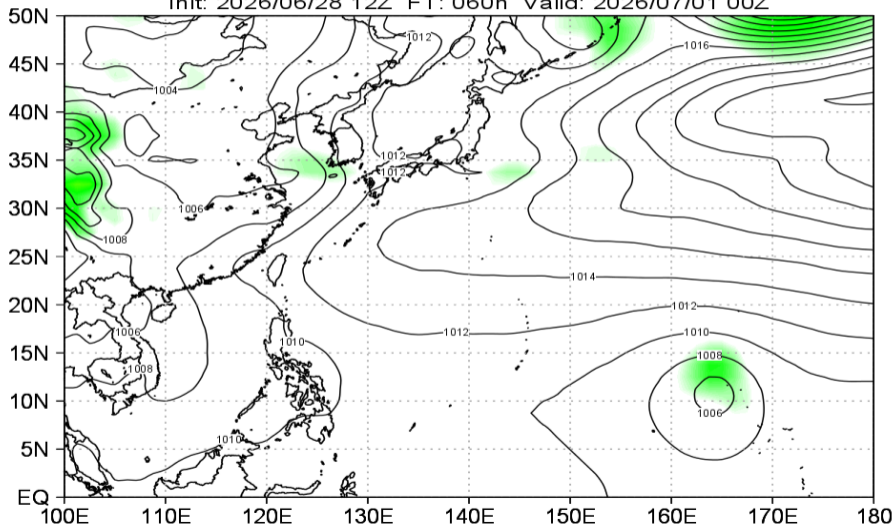
# 地上気圧 (GSMens 06/30 00Z 予報)

JMA GEPS MSLP (hPa) Mean&Spread  
Init: 2026/06/28 12Z FT: 036h Valid: 2026/06/30 00Z



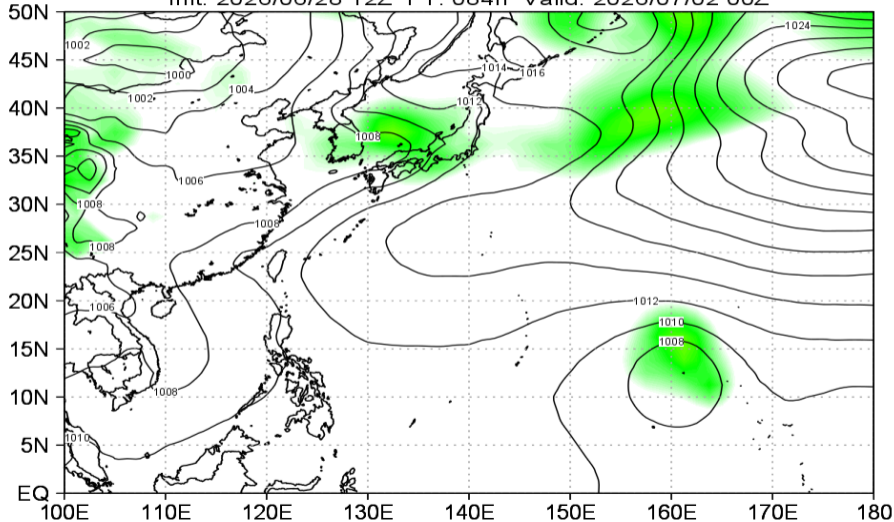
# 地上気圧 (GSMens 07/01 00Z 予報)

JMA GEPS MSLP (hPa) Mean&Spread  
Init: 2026/06/28 12Z FT: 060h Valid: 2026/07/01 00Z



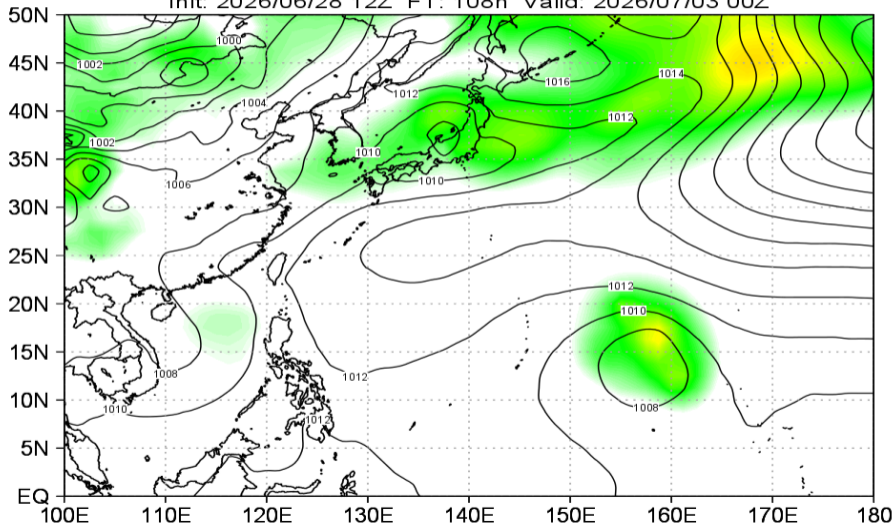
# 地上気圧 (GSMens 07/02 00Z 予報)

JMA GEPS MSLP (hPa) Mean&Spread  
Init: 2026/06/28 12Z FT: 084h Valid: 2026/07/02 00Z



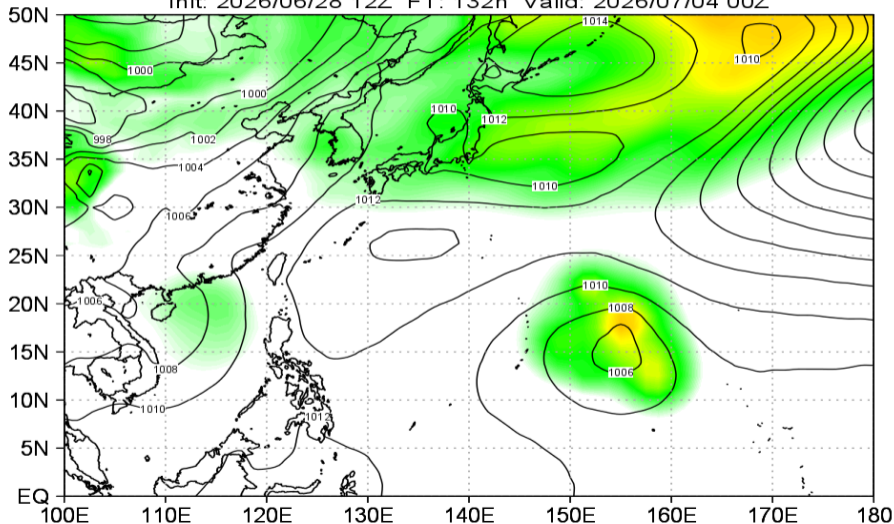
# 地上気圧 (GSMens 07/03 00Z 予報)

JMA GEPS MSLP (hPa) Mean&Spread  
Init: 2026/06/28 12Z FT: 108h Valid: 2026/07/03 00Z



# 地上気圧 (GSMens 07/04 00Z 予報)

JMA GEPS MSLP (hPa) Mean&Spread  
Init: 2026/06/28 12Z FT: 132h Valid: 2026/07/04 00Z



No Figure

No Figure

No Figure

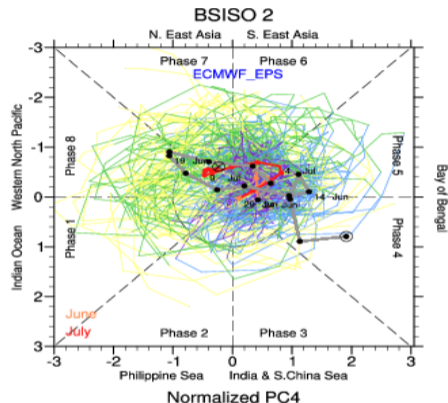
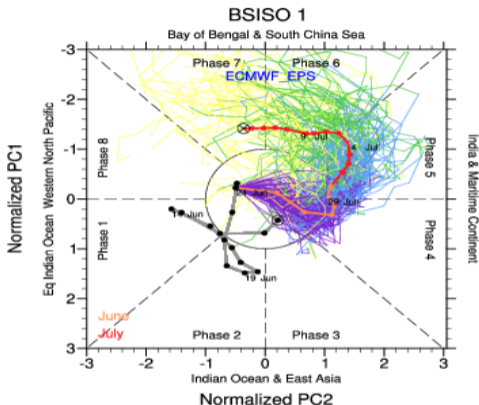
No Figure

No Figure

No Figure

# BSISO 予測 (ECMWFens 06/25 初期)

## BSISO Forecast for 25-June-2026 to 14-July-2026



Reanalysis

0-4d

5-9d

Ensemble Mean

10-14d

15-19d

# BSISO 予測 (NCEPCFSens 06/25 初期)

## BSISO Forecast for 25-June-2026 to 14-July-2026

