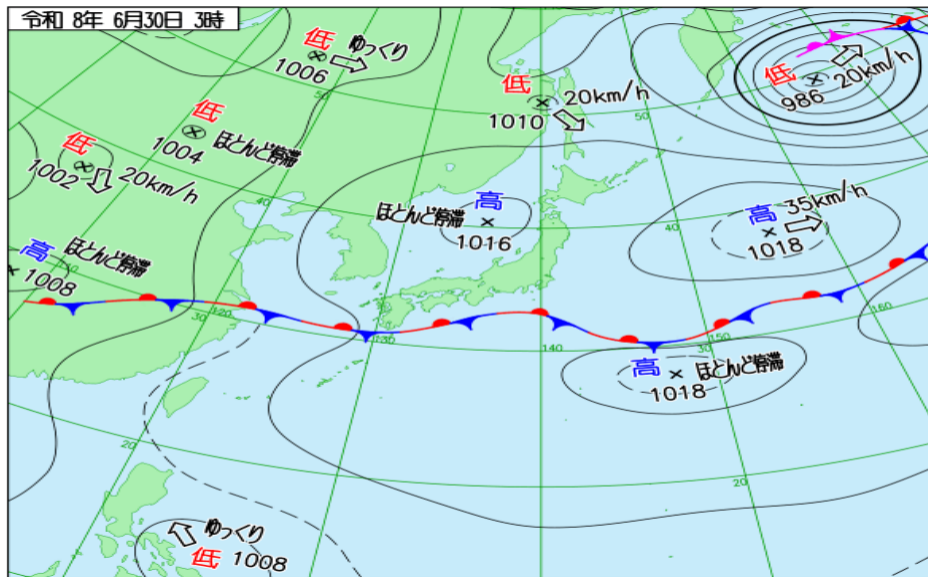
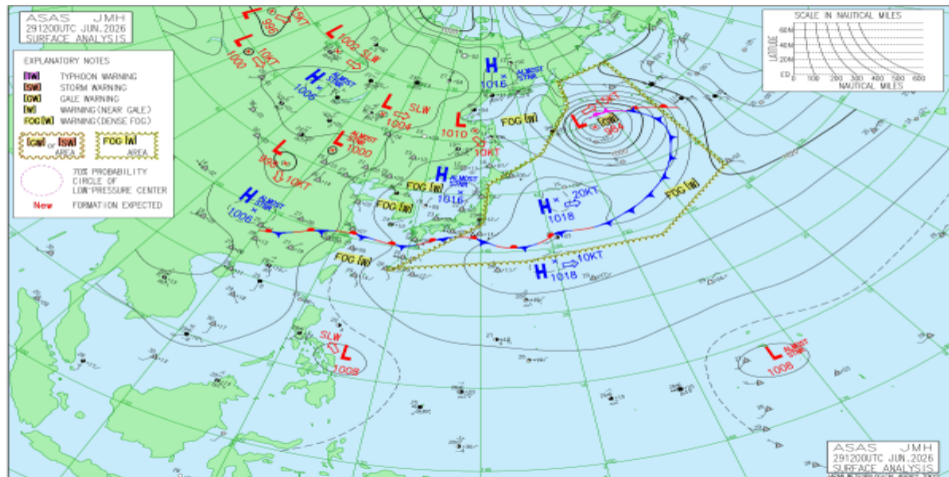


JMA 日本域実況天気図 06/29 18Z

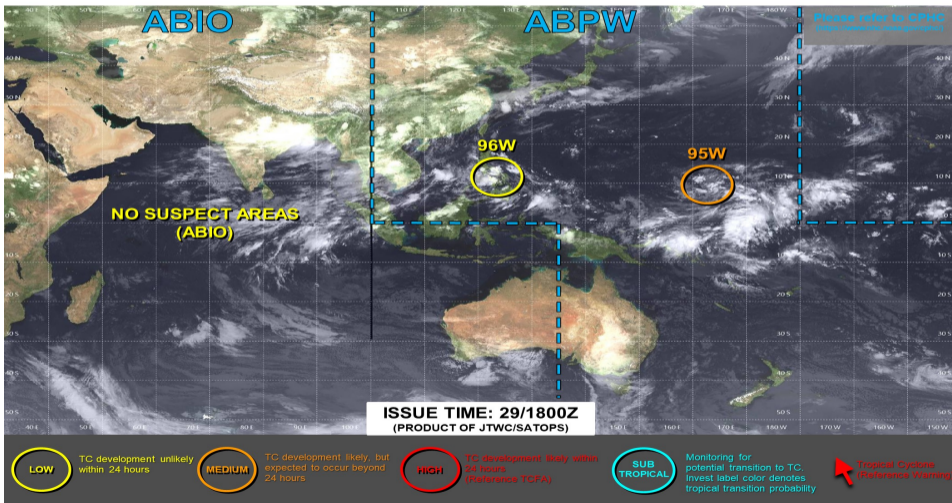


JMA アジア太平洋域実況天気図 06/29 12Z

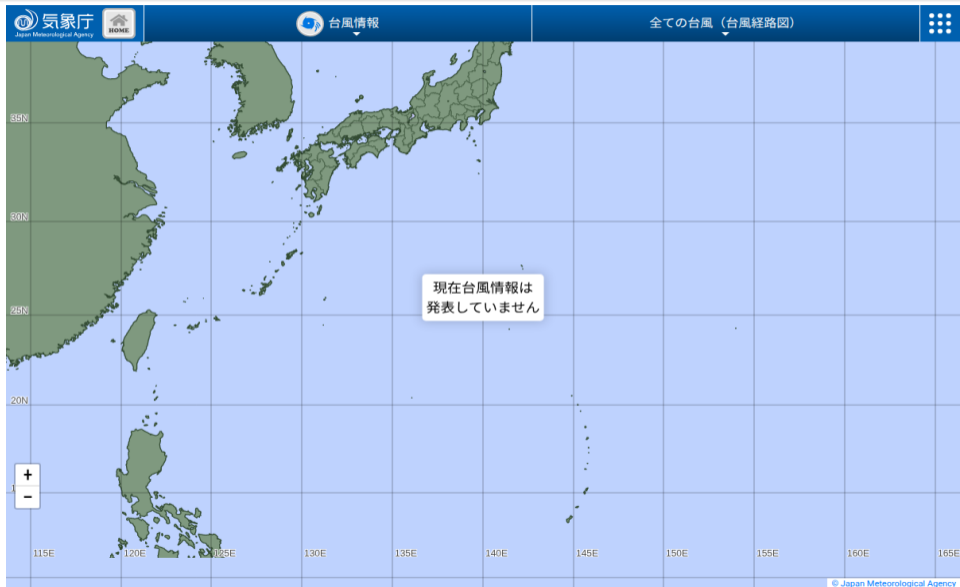




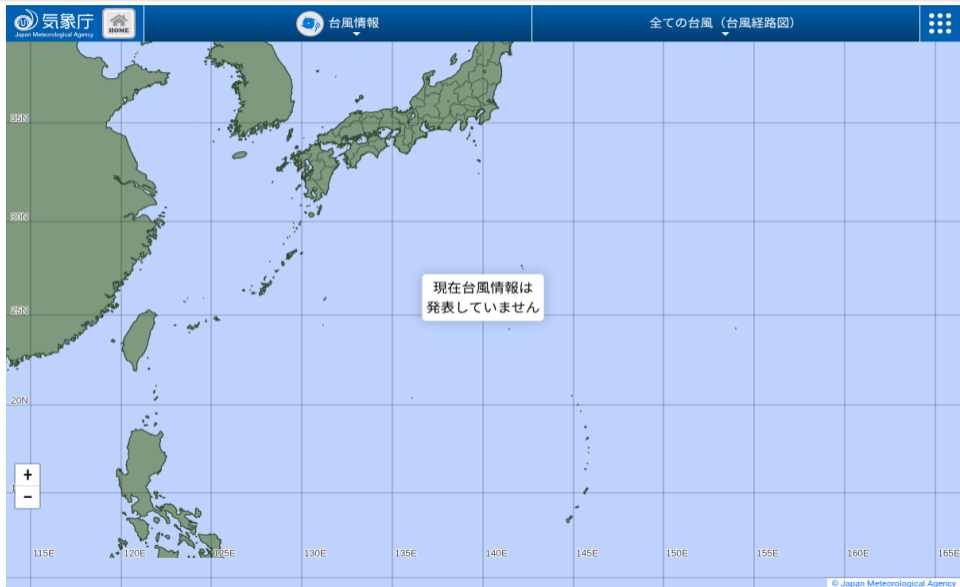
JOINT TYPHOON WARNING CENTER



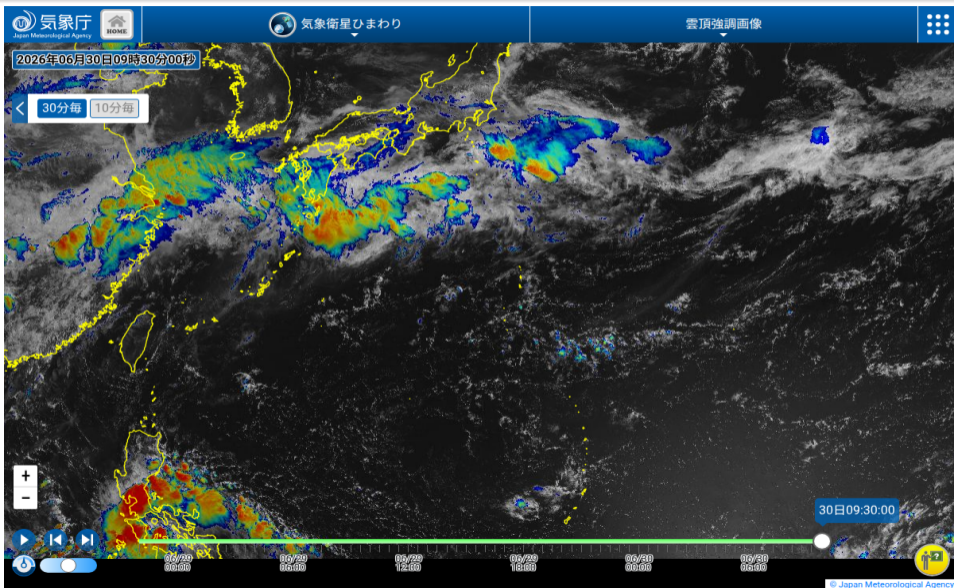
JMA 台風実況



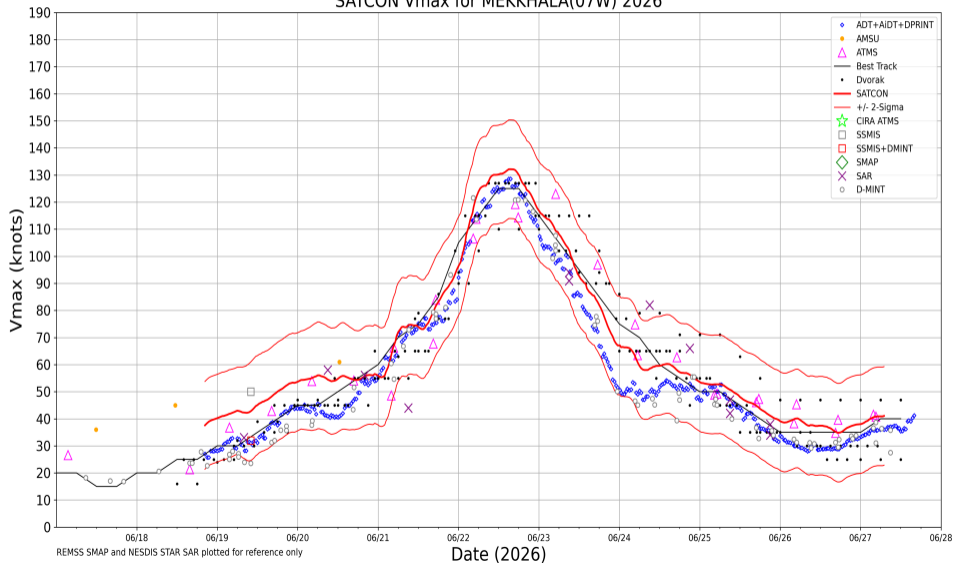
JMA 台風実況



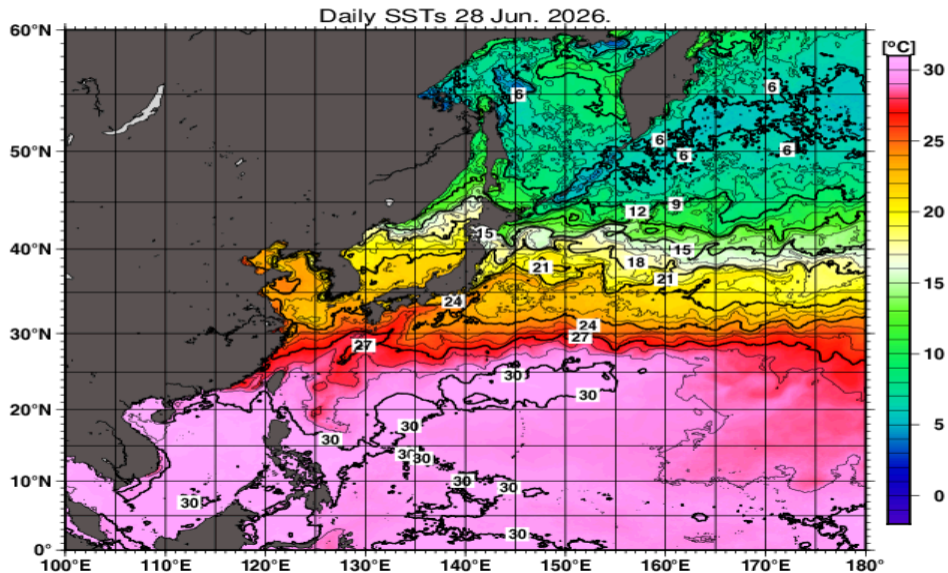
ひまわり雲頂強調



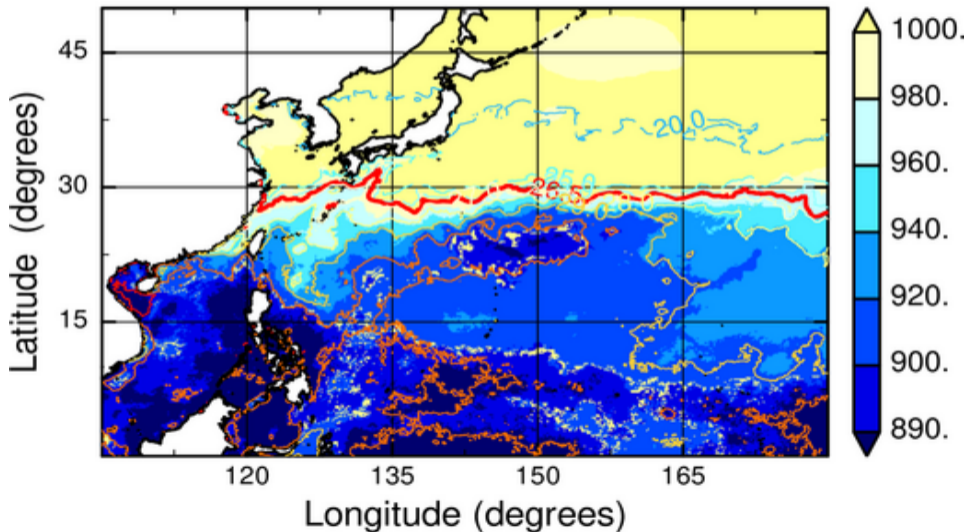
SATCON Vmax for MEKKHALA(07W) 2026



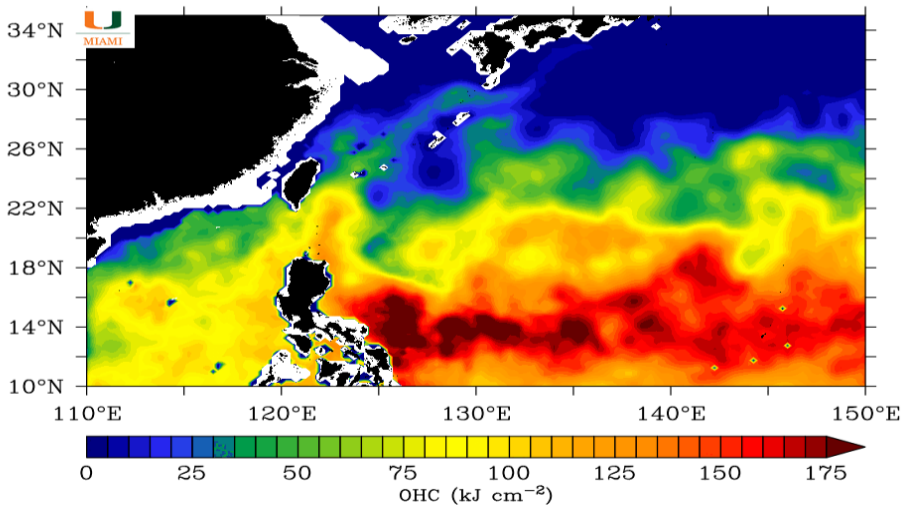
JMA 海面水温解析



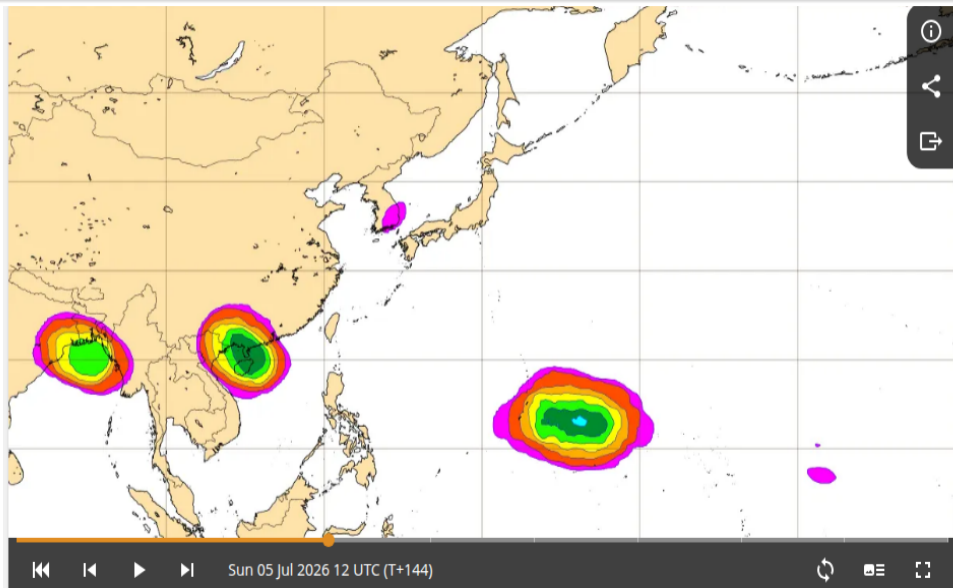
MPI_{BE}, JMAGSM+HIMSST (mb) (00:00:00Z28Jun2026)



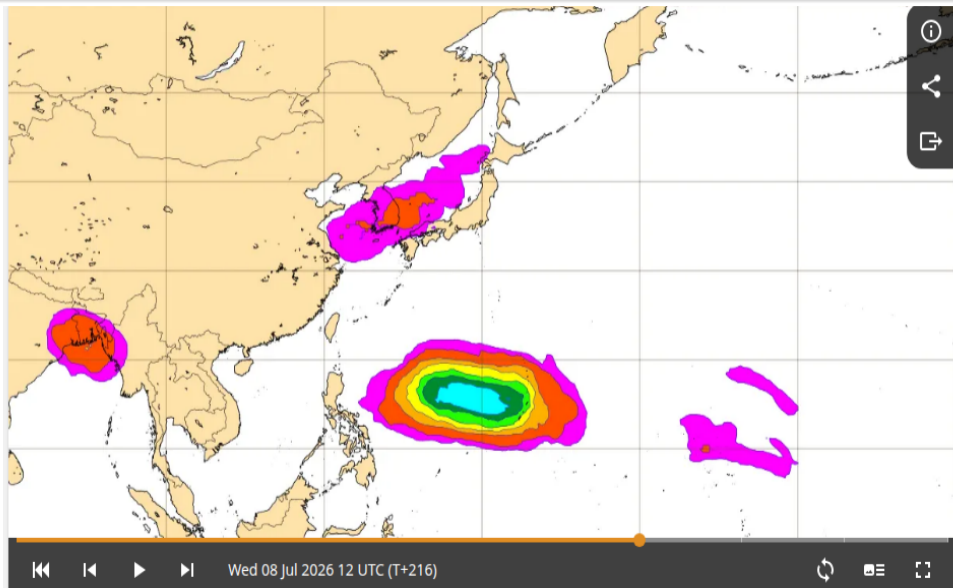
Ocean Heat Content: 06/29/2026



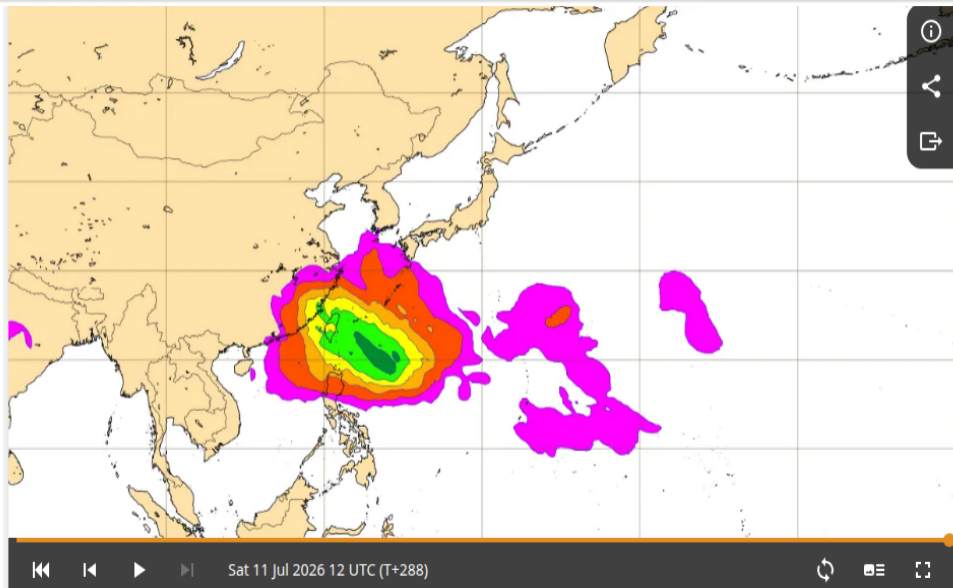
ECMWF TC genesis 07/05 12Z (6 日先) 予報



ECMWF TC genesis 07/08 12Z (9 日先) 予報



ECMWF TC genesis 07/11 12Z (12 日先) 予報

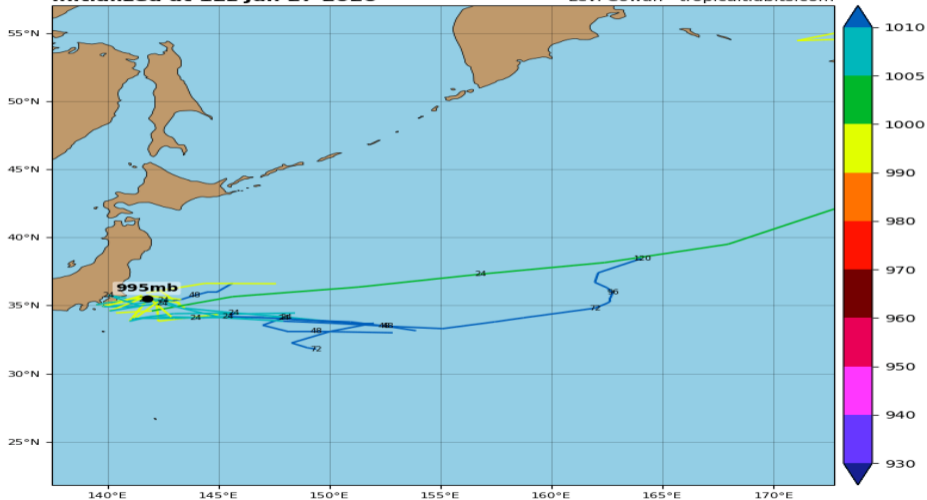


07W GEFS (06/29 12Z 初期値)

07W MEKKHALA - GEFS Tracks and Min. MSLP (hPa)

Initialized at 12z Jun 27 2026

Levi Cowan - tropicaltidbits.com

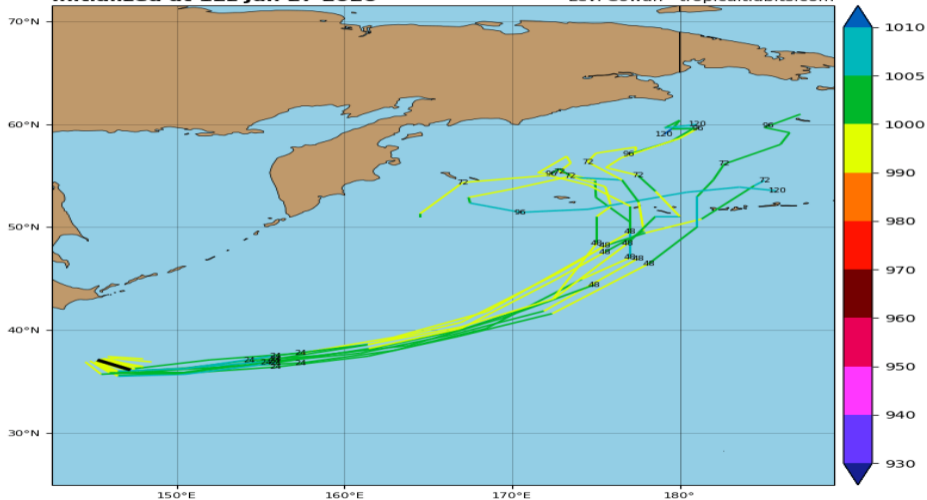


07W GEPS (06/29 12Z 初期値)

07W MEKKHALA - GEPS Tracks and Min. MSLP (hPa)

Initialized at 12z Jun 27 2026

Levi Cowan - tropicaltidbits.com

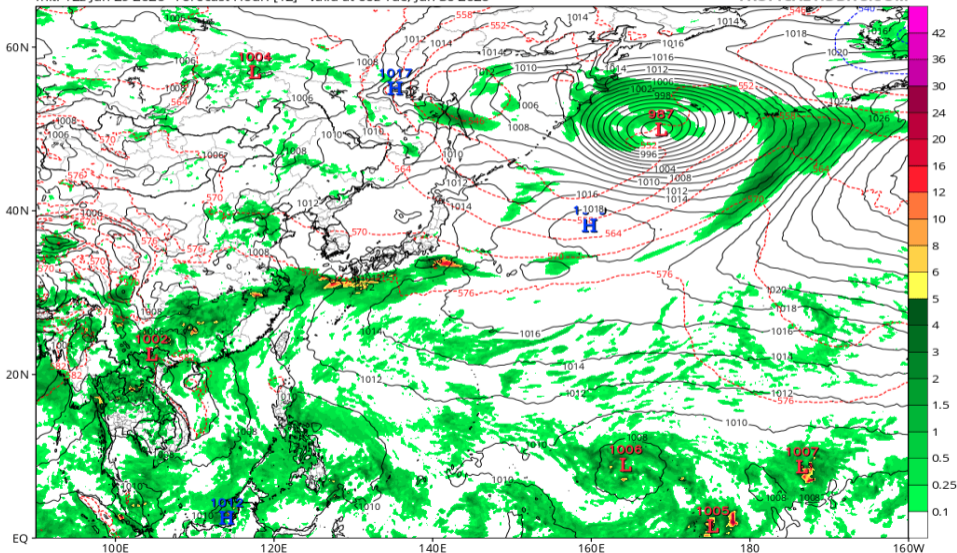


地上気圧配置 (GFS 06/30 00Z 予報)

GFS 6-hour Averaged Precip Rate (mm/hr), MSLP (hPa) & 1000-500mb Thickness (dam)

Init: 12z Jun 29 2026 Forecast Hour: [12] valid at 00z Tue, Jun 30 2026

TROPICALTIDBITS.COM

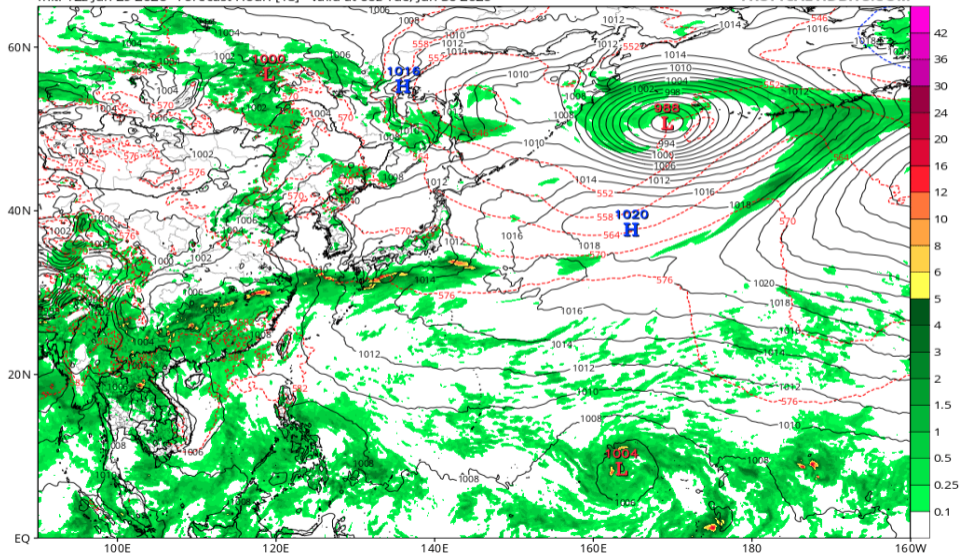


地上気圧配置 (GFS 06/30 06Z 予報)

GFS 6-hour Averaged Precip Rate (mm/hr), MSLP (hPa) & 1000-500mb Thickness (dam)

Init: 12z Jun 29 2026 Forecast Hour: [18] valid at 06z Tue, Jun 30 2026

TROPICALTIDBITS.COM

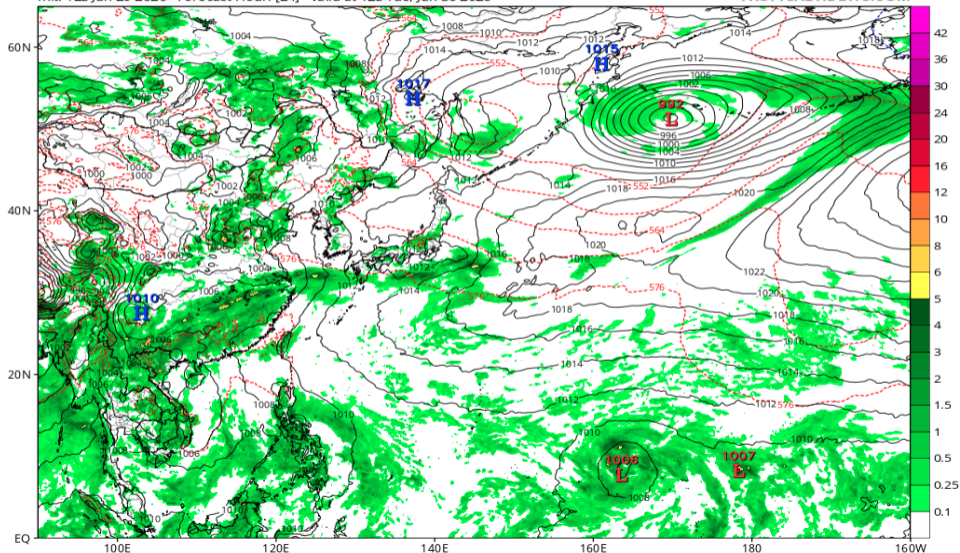


地上気圧配置 (GFS 06/30 12Z 予報)

GFS 6-hour Averaged Precip Rate (mm/hr), MSLP (hPa) & 1000-500mb Thickness (dam)

Init: 12z Jun 29 2026 Forecast Hour: [24] valid at 12z Tue, Jun 30 2026

TROPICALTIDBITS.COM

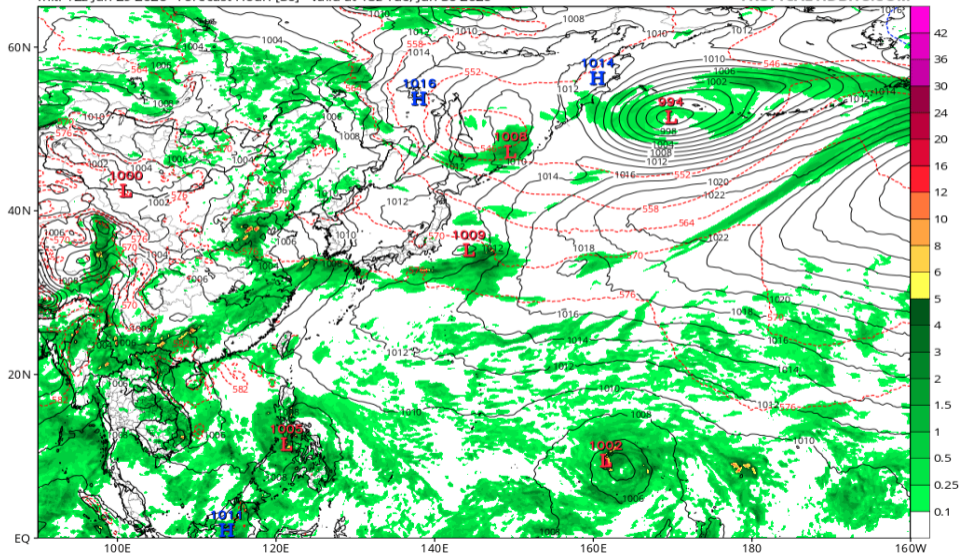


地上気圧配置 (GFS 06/30 18Z 予報)

GFS 6-hour Averaged Precip Rate (mm/hr), MSLP (hPa) & 1000-500mb Thickness (dam)

Init: 12z Jun 29 2026 Forecast Hour: [30] valid at 18z Tue, Jun 30 2026

TROPICALTIDBITS.COM

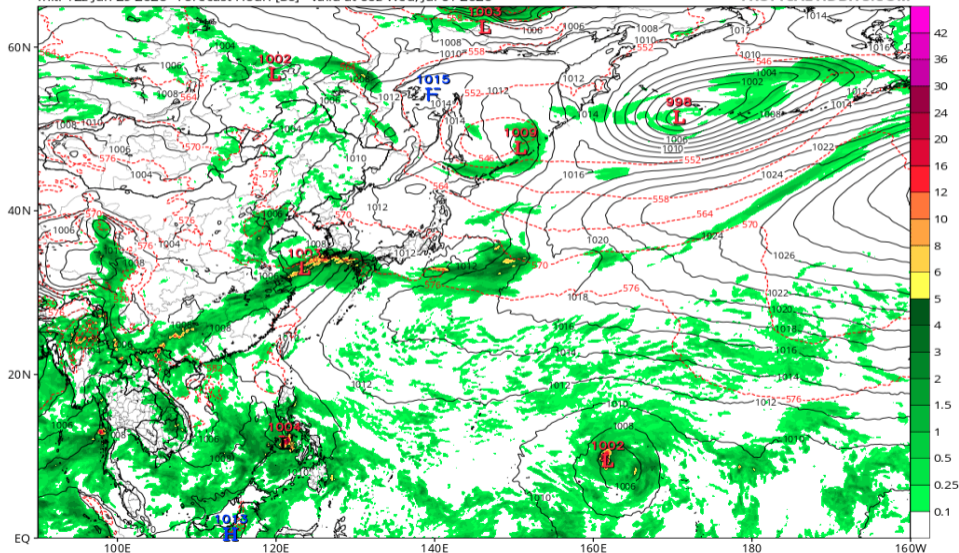


地上気圧配置 (GFS 07/01 00Z 予報)

GFS 6-hour Averaged Precip Rate (mm/hr), MSLP (hPa) & 1000-500mb Thickness (dam)

Init: 12z Jun 29 2026 Forecast Hour: [36] valid at 00z Wed, Jul 01 2026

TROPICALTIDBITS.COM

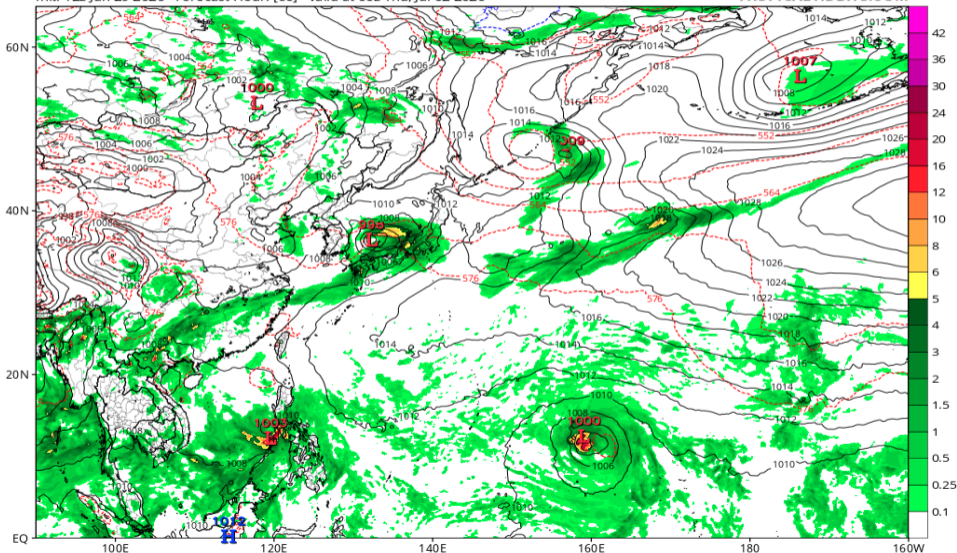


地上気圧配置 (GFS 07/02 00Z 予報)

GFS 6-hour Averaged Precip Rate (mm/hr), MSLP (hPa) & 1000-500mb Thickness (dam)

Init: 12z Jun 29 2026 Forecast Hour: [60] valid at 00z Thu, Jul 02 2026

TROPICALTIDBITS.COM

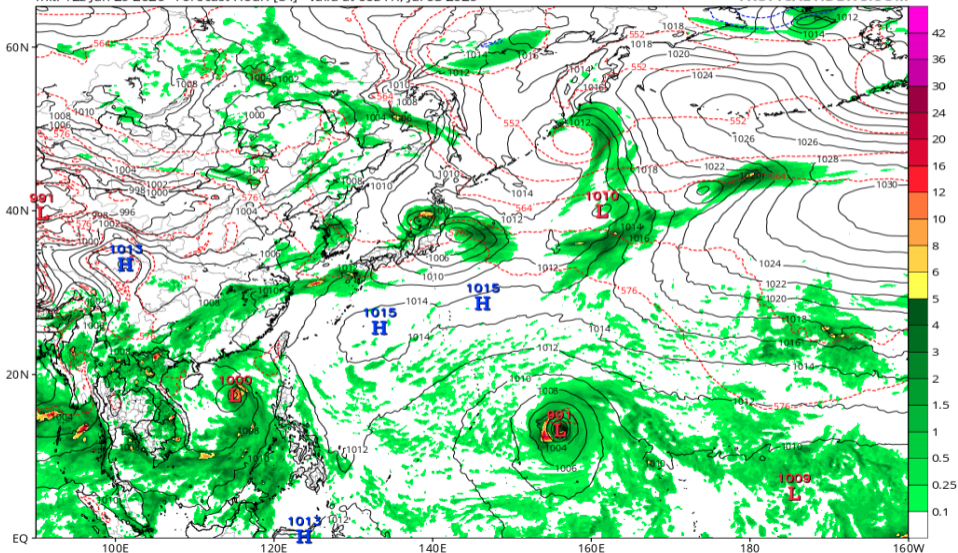


地上気圧配置 (GFS 07/03 00Z 予報)

GFS 6-hour Averaged Precip Rate (mm/hr), MSLP (hPa) & 1000-500mb Thickness (dam)

Init: 12z Jun 29 2026 Forecast Hour: [84] valid at 00z Fri, Jul 03 2026

TROPICALTIDBITS.COM

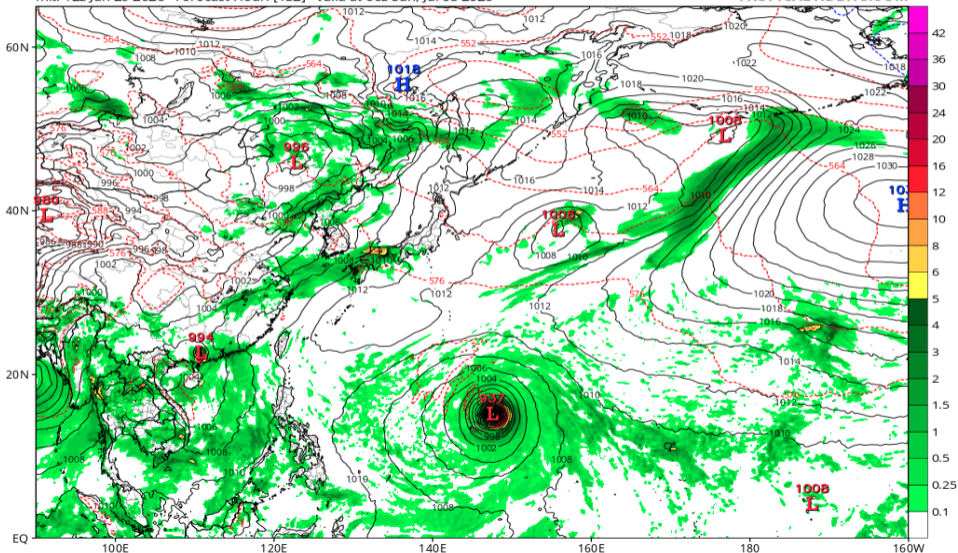


地上気圧配置 (GFS 07/05 00Z 予報)

GFS 6-hour Averaged Precip Rate (mm/hr), MSLP (hPa) & 1000-500mb Thickness (dam)

Init: 12z Jun 29 2026 Forecast Hour: [132] valid at 00z Sun, Jul 05 2026

TROPICALTIDBITS.COM

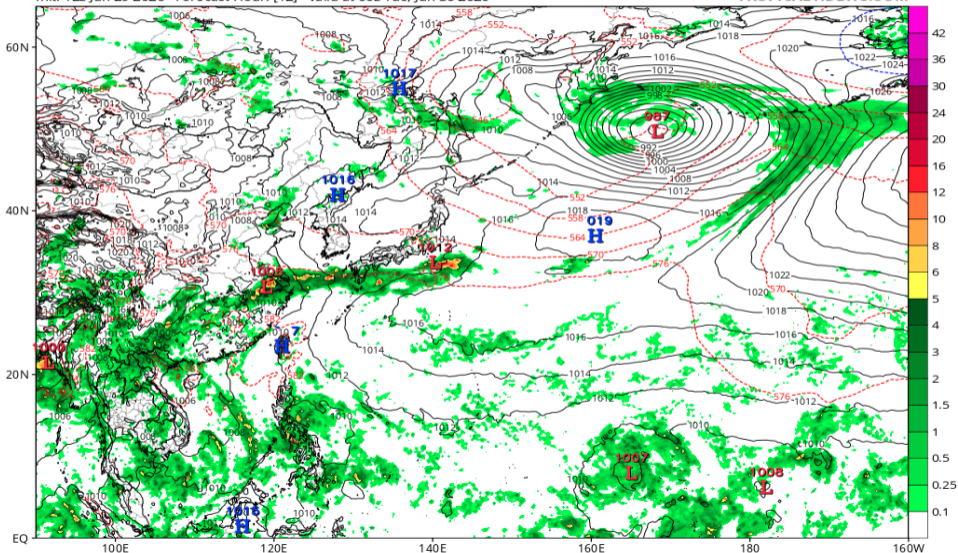


地上気圧配置 (ECMWF 06/30 00Z 予報)

ECMWF Instantaneous Precip Rate (mm/hr), MSLP (hPa) & 1000-500mb Thickness (dam)

Init: 12z Jun 29 2026 Forecast Hour: [12] valid at 00z Tue, Jun 30 2026

TROPICALTIDBITS.COM

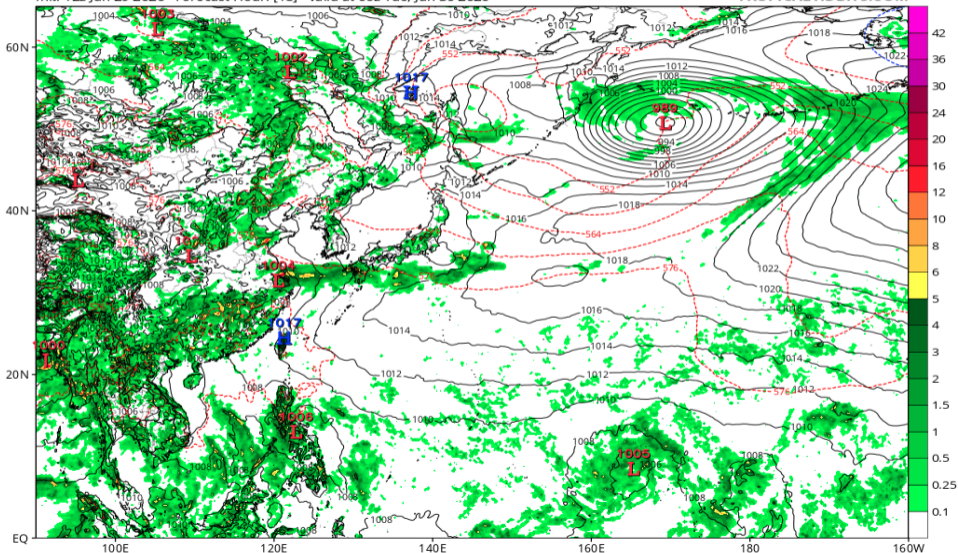


地上気圧配置 (ECMWF 06/30 06Z 予報)

ECMWF Instantaneous Precip Rate (mm/hr), MSLP (hPa) & 1000-500mb Thickness (dam)

Init: 12z Jun 29 2026 Forecast Hour: [18] valid at 06z Tue, Jun 30 2026

TROPICALTIDBITS.COM

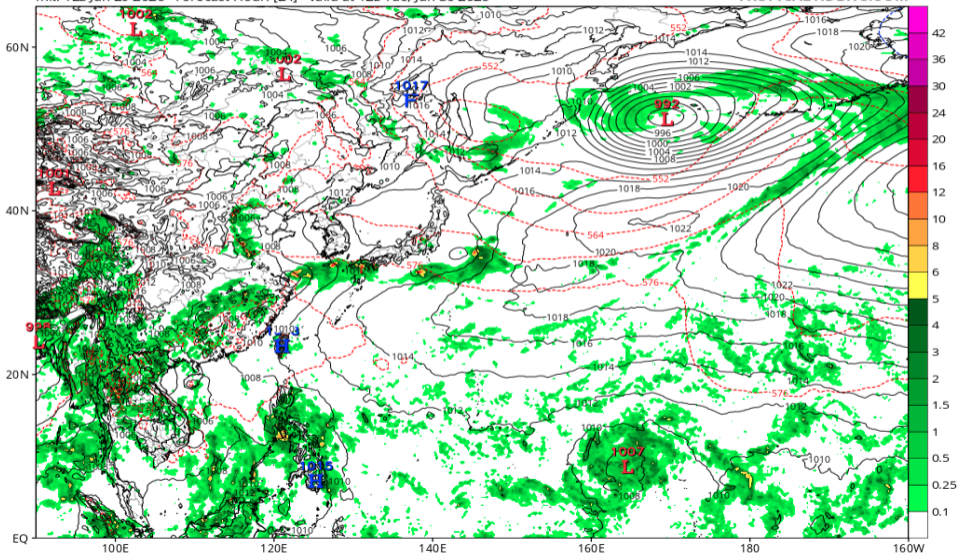


地上気圧配置 (ECMWF 06/30 12Z 予報)

ECMWF Instantaneous Precip Rate (mm/hr), MSLP (hPa) & 1000-500mb Thickness (dam)

Init: 12z Jun 29 2026 Forecast Hour: [24] valid at 12z Tue, Jun 30 2026

TROPICALTIDBITS.COM

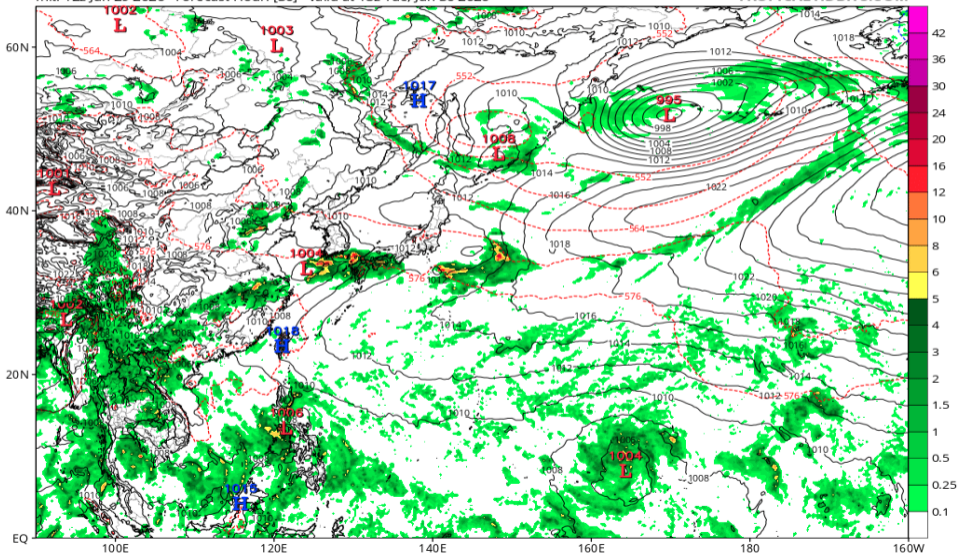


地上気圧配置 (ECMWF 06/30 18Z 予報)

ECMWF Instantaneous Precip Rate (mm/hr), MSLP (hPa) & 1000-500mb Thickness (dam)

Init: 12z Jun 29 2026 Forecast Hour: [30] valid at 18z Tue, Jun 30 2026

TROPICALTIDBITS.COM

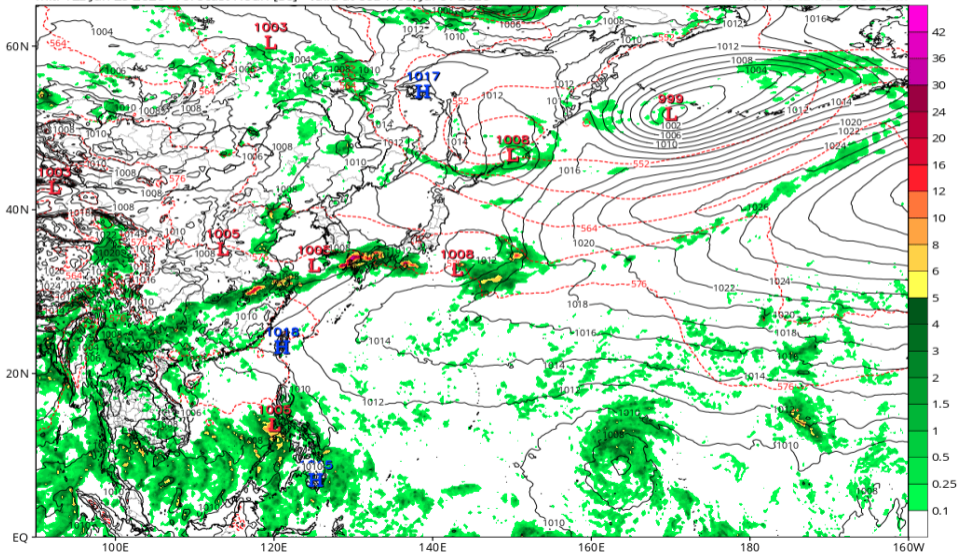


地上気圧配置 (ECMWF 07/01 00Z 予報)

ECMWF Instantaneous Precip Rate (mm/hr), MSLP (hPa) & 1000-500mb Thickness (dam)

Init: 12z Jun 29 2026 Forecast Hour: [36] valid at 00z Wed, Jul 01 2026

TROPICALTIDBITS.COM

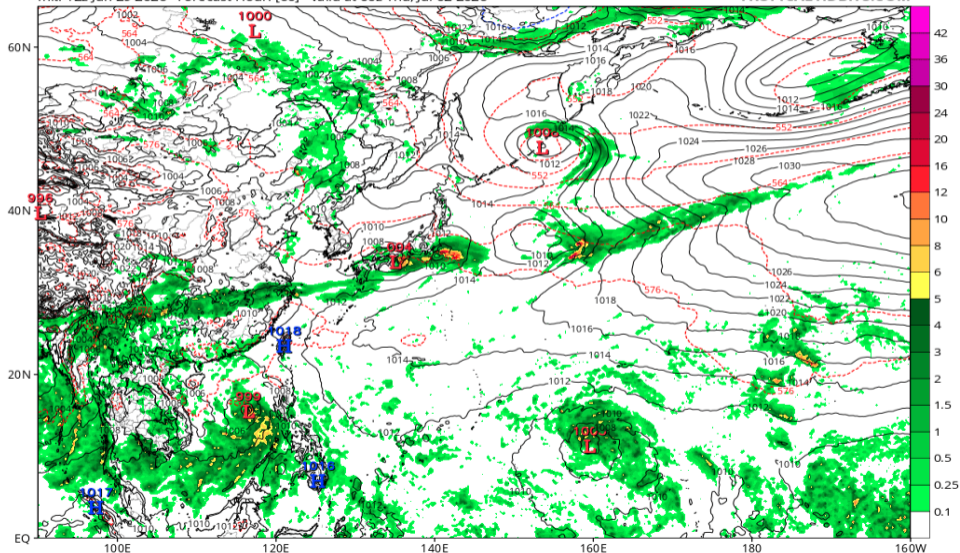


地上気圧配置 (ECMWF 07/02 00Z 予報)

ECMWF Instantaneous Precip Rate (mm/hr), MSLP (hPa) & 1000-500mb Thickness (dam)

Init: 12z Jun 29 2026 Forecast Hour: [60] valid at 00z Thu, Jul 02 2026

TROPICALTIDBITS.COM

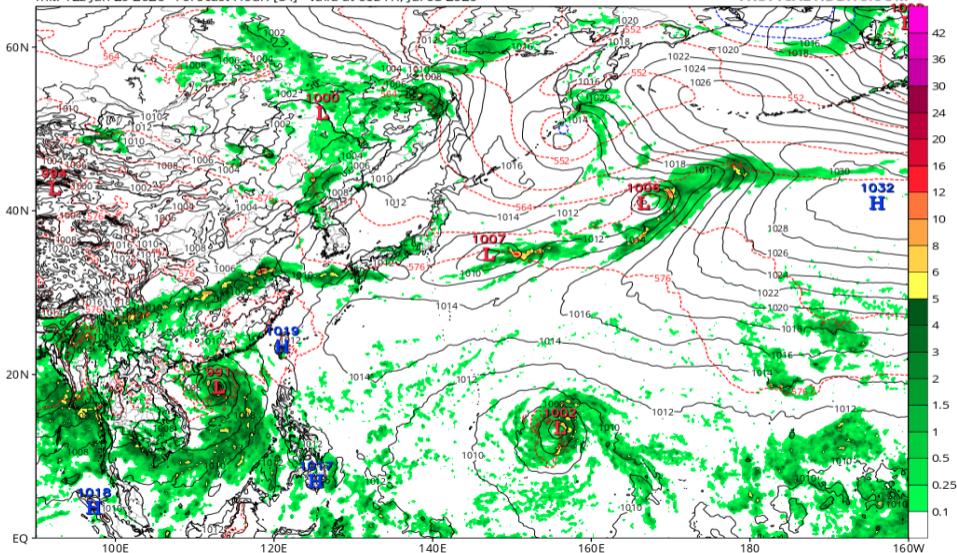


地上気圧配置 (ECMWF 07/03 00Z 予報)

ECMWF Instantaneous Precip Rate (mm/hr), MSLP (hPa) & 1000-500mb Thickness (dam)

Init: 12z Jun 29 2026 Forecast Hour: [84] valid at 00z Fri, Jul 03 2026

TROPICALTIDBITS.COM

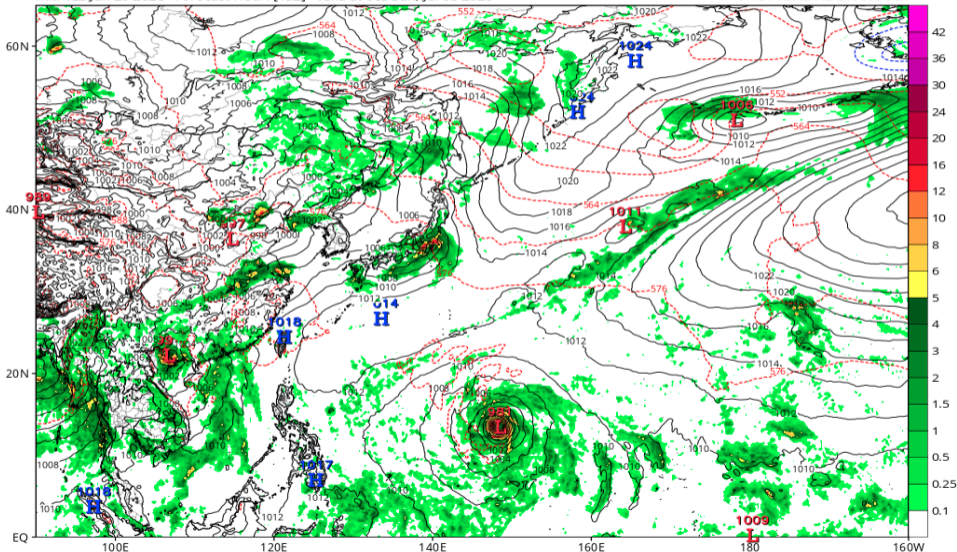


地上気圧配置 (ECMWF 07/05 00Z 予報)

ECMWF Instantaneous Precip Rate (mm/hr), MSLP (hPa) & 1000-500mb Thickness (dam)

Init: 12z Jun 29 2026 Forecast Hour: [132] valid at 00z Sun, Jul 05 2026

TROPICALTIDBITS.COM

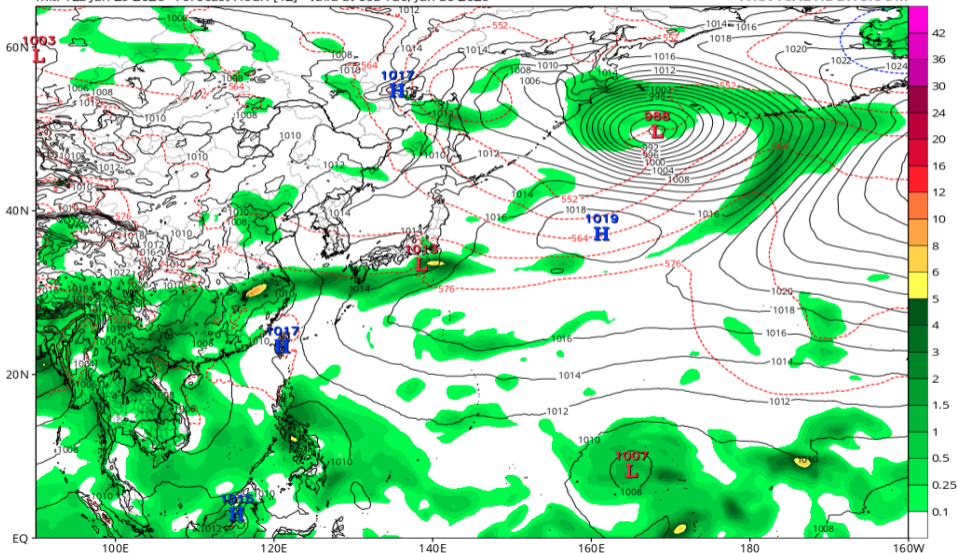


地上気圧配置 (AIFS 06/30 00Z 予報)

EC-AIFS 6-hour Averaged Precip Rate (mm/hr), MSLP (hPa) & 1000-500mb Thickness (dam)

Init: 12z Jun 29 2026 Forecast Hour: [12] valid at 00z Tue, Jun 30 2026

TROPICALTIDBITS.COM

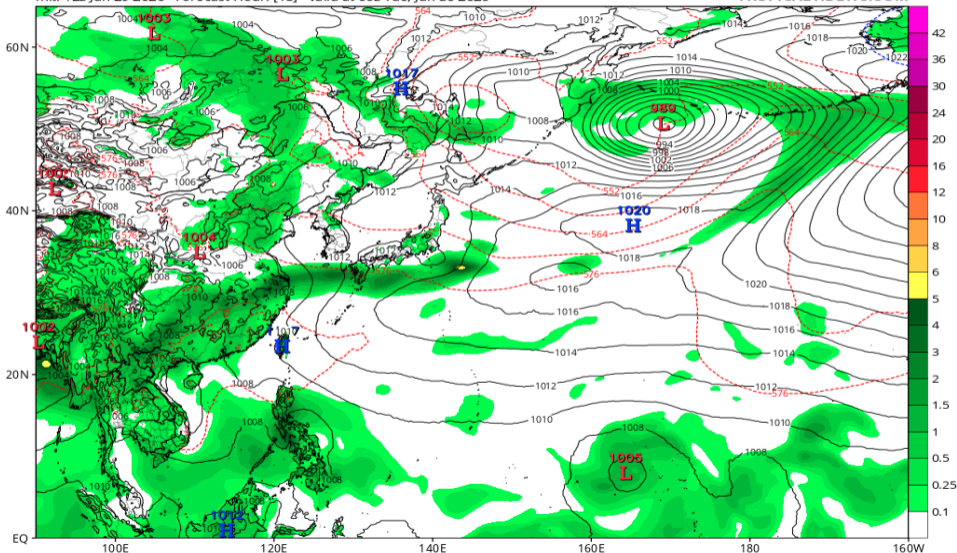


地上気圧配置 (AIFS 06/30 06Z 予報)

EC-AIFS 6-hour Averaged Precip Rate (mm/hr), MSLP (hPa) & 1000-500mb Thickness (dam)

Init: 12z Jun 29 2026 Forecast Hour: [18] valid at 06z Tue, Jun 30 2026

TROPICALTIDBITS.COM

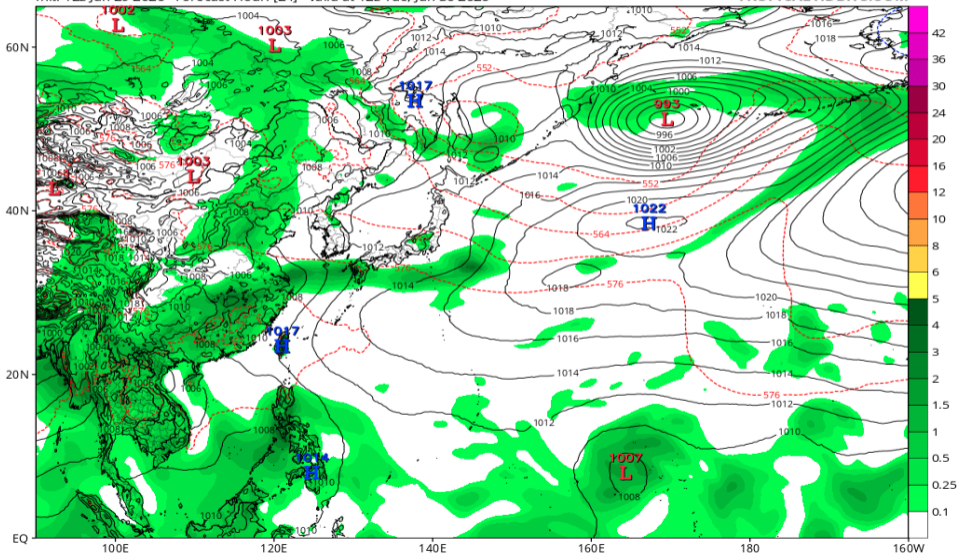


地上気圧配置 (AIFS 06/30 12Z 予報)

EC-AIFS 6-hour Averaged Precip Rate (mm/hr), MSLP (hPa) & 1000-500mb Thickness (dam)

Init: 12z Jun 29 2026 Forecast Hour: [24] valid at 12z Tue, Jun 30 2026

TROPICALTIDBITS.COM

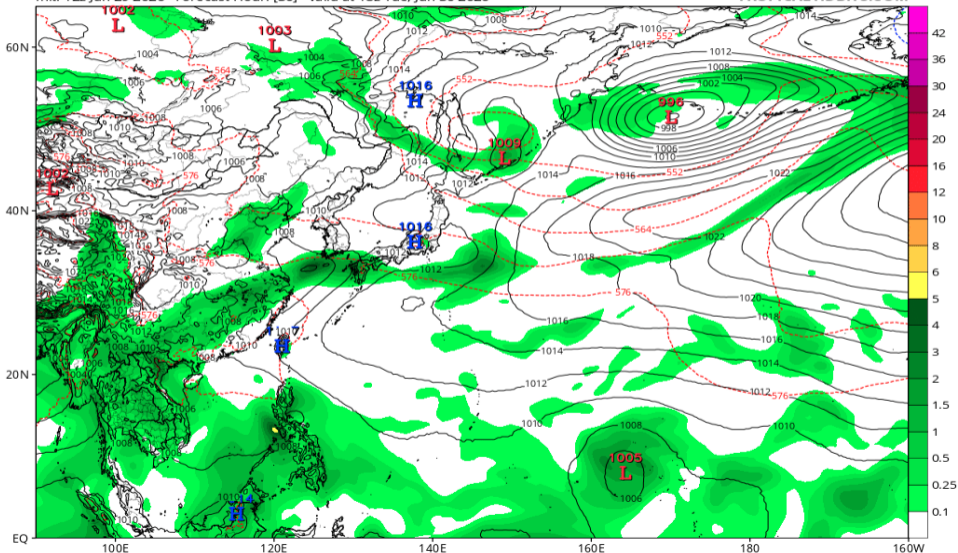


地上気圧配置 (AIFS 06/30 18Z 予報)

EC-AIFS 6-hour Averaged Precip Rate (mm/hr), MSLP (hPa) & 1000-500mb Thickness (dam)

Init: 12z Jun 29 2026 Forecast Hour: [30] valid at 18z Tue, Jun 30 2026

TROPICALTIDBITS.COM

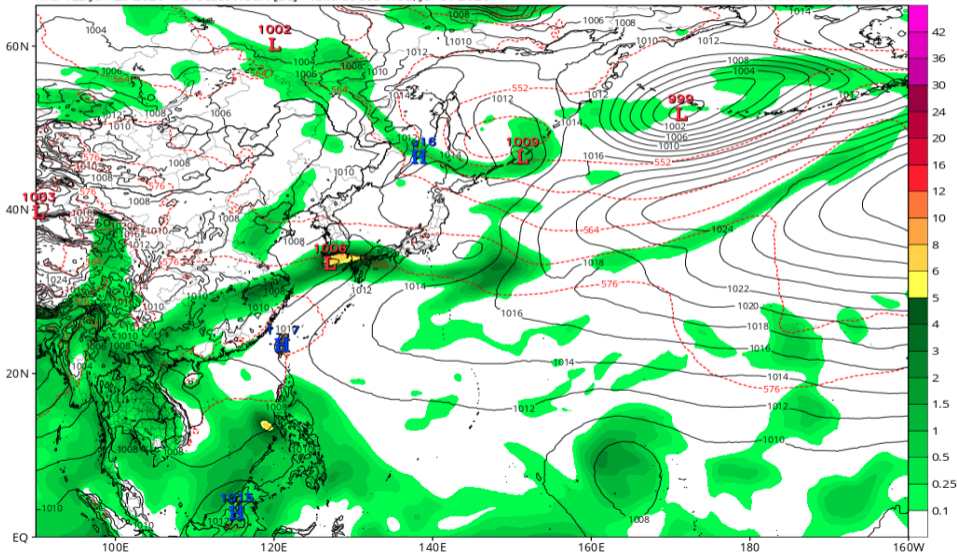


地上気圧配置 (AIFS 07/01 00Z 予報)

EC-AIFS 6-hour Averaged Precip Rate (mm/hr), MSLP (hPa) & 1000-500mb Thickness (dam)

Init: 12z Jun 29 2026 Forecast Hour: [36] valid at 00z Wed, Jul 01 2026

TROPICALTIDBITS.COM

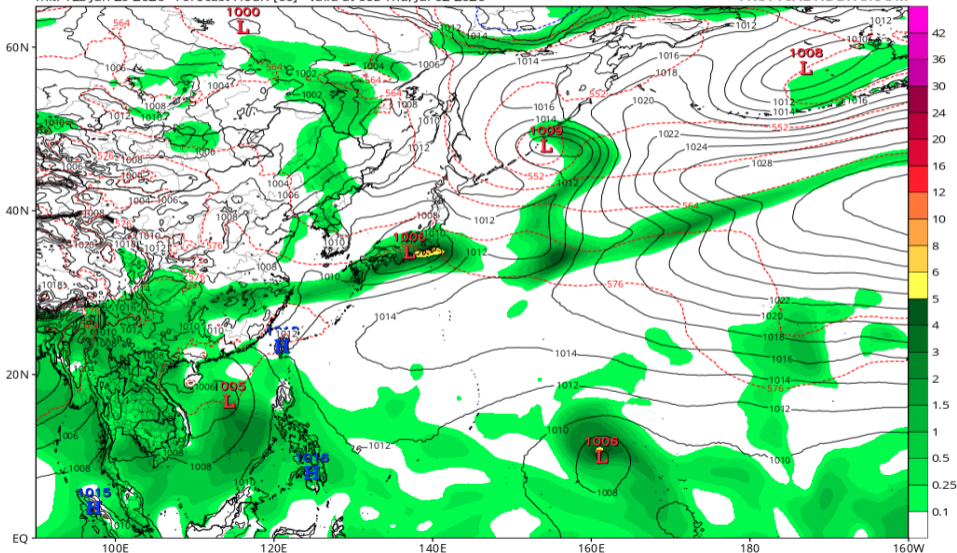


地上気圧配置 (AIFS 07/02 00Z 予報)

EC-AIFS 6-hour Averaged Precip Rate (mm/hr), MSLP (hPa) & 1000-500mb Thickness (dam)

Init: 12z Jun 29 2026 Forecast Hour: [60] valid at 00z Thu, Jul 02 2026

TROPICALTIDBITS.COM

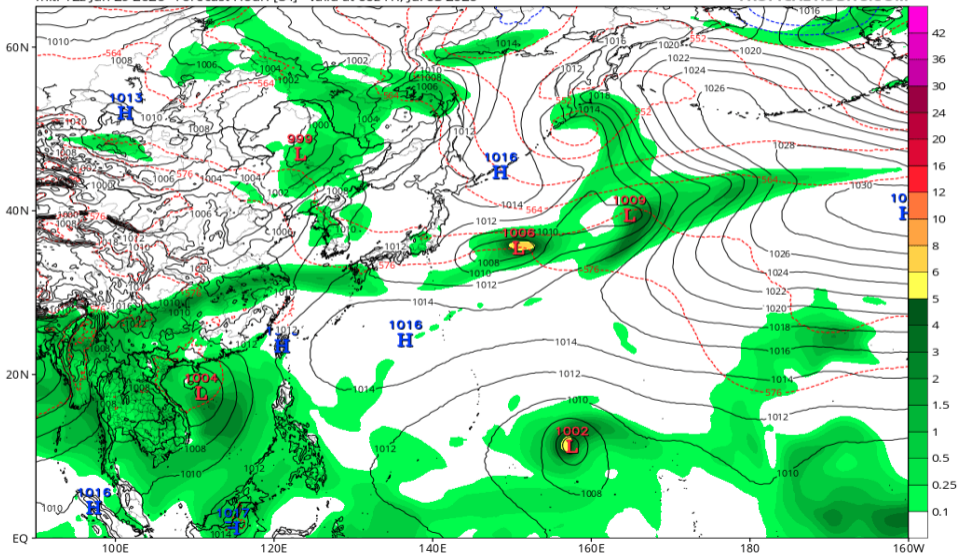


地上気圧配置 (AIFS 07/03 00Z 予報)

EC-AIFS 6-hour Averaged Precip Rate (mm/hr), MSLP (hPa) & 1000-500mb Thickness (dam)

Init: 12z Jun 29 2026 Forecast Hour: [84] valid at 00z Fri, Jul 03 2026

TROPICALTIDBITS.COM

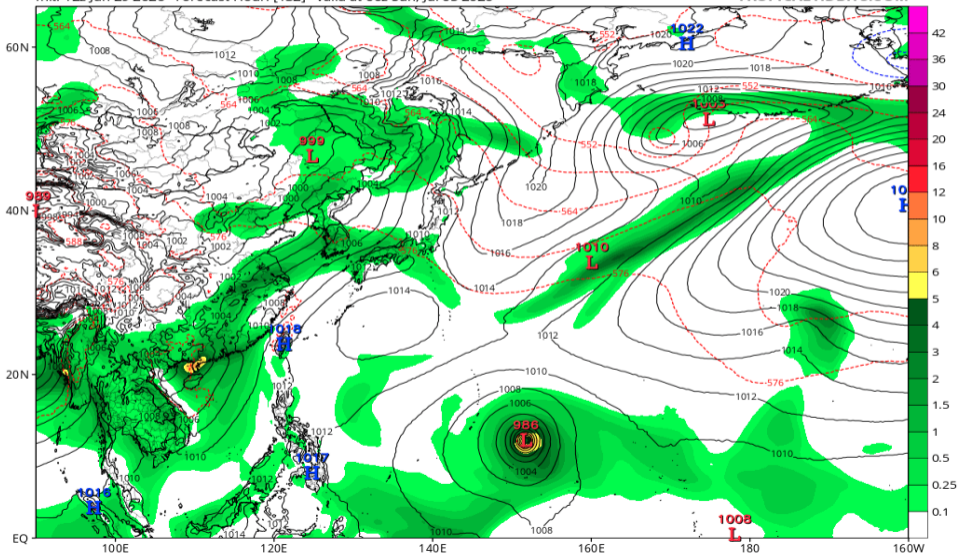


地上気圧配置 (AIFS 07/05 00Z 予報)

EC-AIFS 6-hour Averaged Precip Rate (mm/hr), MSLP (hPa) & 1000-500mb Thickness (dam)

Init: 12z Jun 29 2026 Forecast Hour: [132] valid at 00z Sun, Jul 05 2026

TROPICALTIDBITS.COM

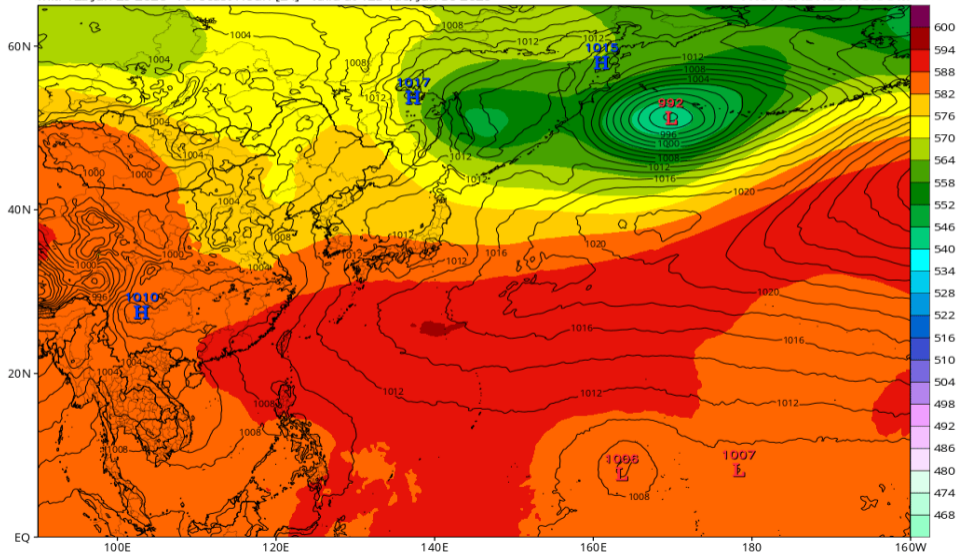


Z500/地上気圧配置 (GFS 06/30 12Z 予報)

GFS 500mb Geopotential Height (dam) & MSLP (mb)

Init: 12z Jun 29 2026 Forecast Hour: [24] valid at 12z Tue, Jun 30 2026

TROPICALTIDBITS.COM

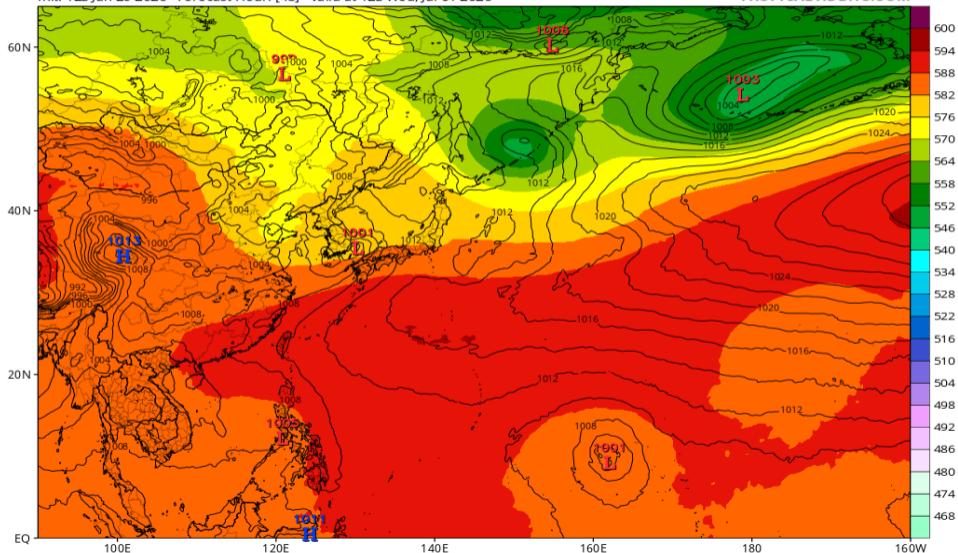


Z500/地上気圧配置 (GFS 07/01 12Z 予報)

GFS 500mb Geopotential Height (dam) & MSLP (mb)

Init: 12z Jun 29 2026 Forecast Hour: [48] valid at 12z Wed, Jul 01 2026

TROPICALTIDBITS.COM

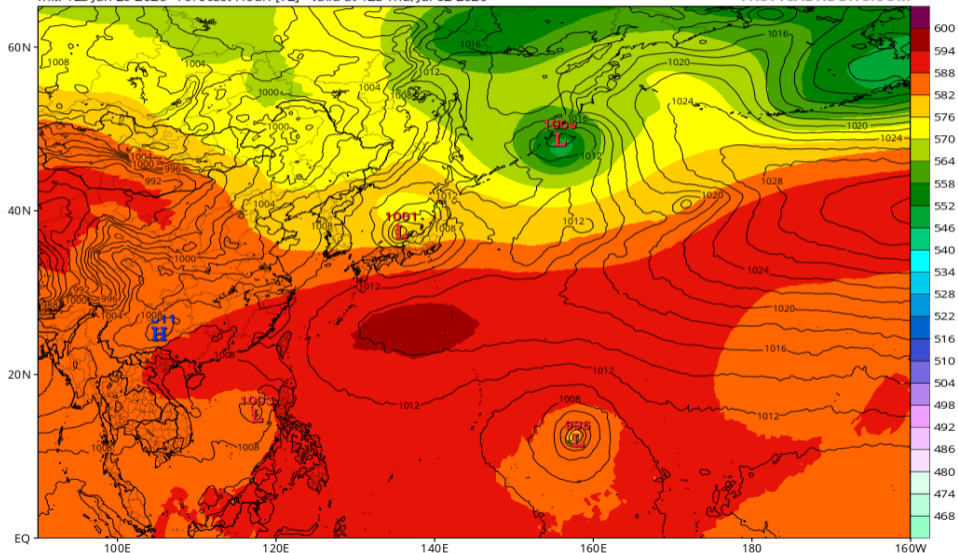


Z500/地上気圧配置 (GFS 07/02 12Z 予報)

GFS 500mb Geopotential Height (dam) & MSLP (mb)

Init: 12z Jun 29 2026 Forecast Hour: [72] valid at 12z Thu, Jul 02 2026

TROPICALTIDBITS.COM

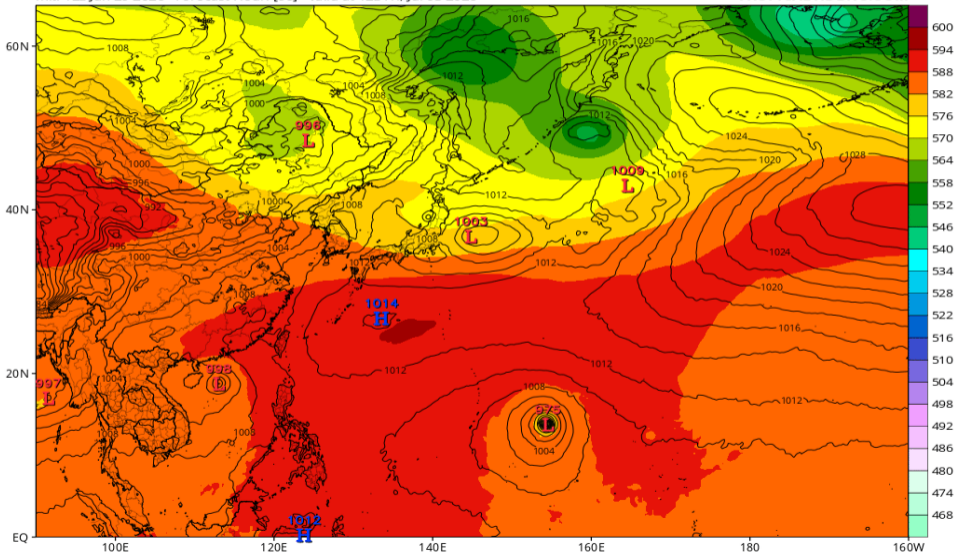


Z500/地上気圧配置 (GFS 07/03 12Z 予報)

GFS 500mb Geopotential Height (dam) & MSLP (mb)

Init: 12z Jun 29 2026 Forecast Hour: [96] valid at 12z Fri, Jul 03 2026

TROPICALTIDBITS.COM

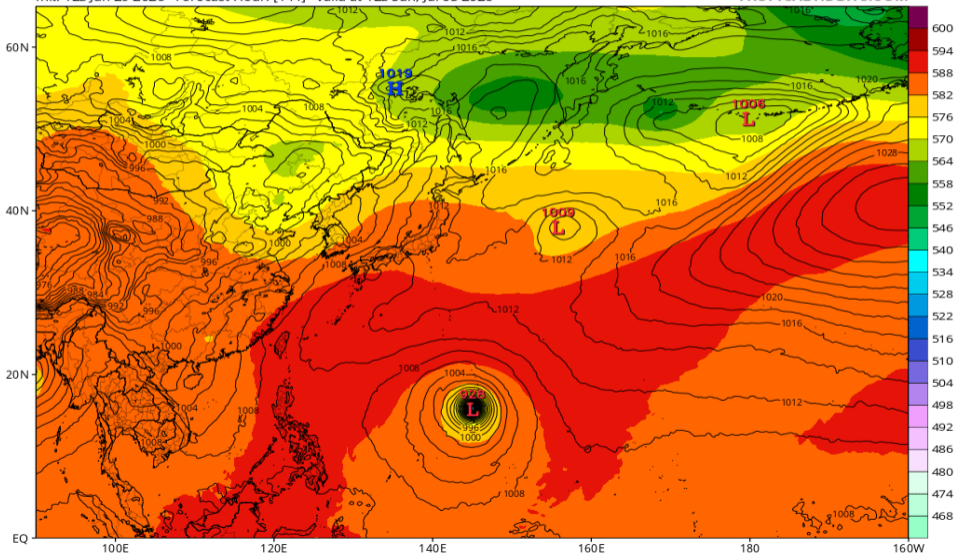


Z500/地上気圧配置 (GFS 07/05 12Z 予報)

GFS 500mb Geopotential Height (dam) & MSLP (mb)

Init: 12z Jun 29 2026 Forecast Hour: [144] valid at 12z Sun, Jul 05 2026

TROPICALTIDBITS.COM

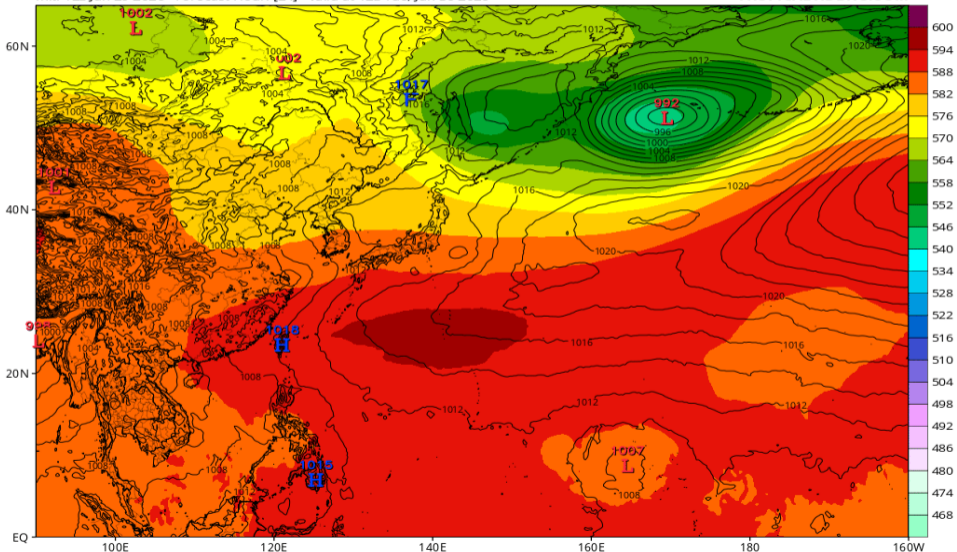


Z500/地上気圧配置 (ECMWF 06/30 12Z 予報)

ECMWF 500mb Geopotential Height (dam) & MSLP (mb)

Init: 12z Jun 29 2026 Forecast Hour: [24] valid at 12z Tue, Jun 30 2026

TROPICALTIDBITS.COM

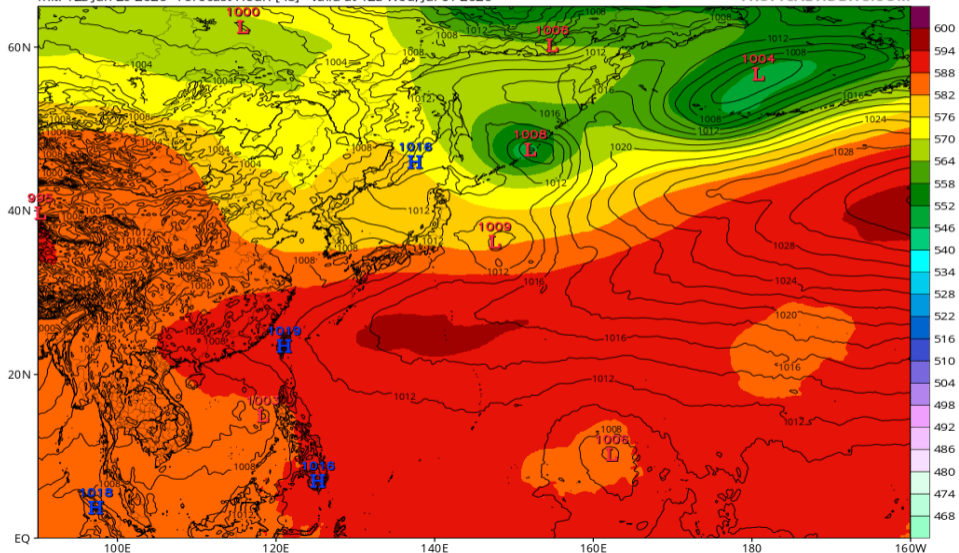


Z500/地上気圧配置 (ECMWF 07/01 12Z 予報)

ECMWF 500mb Geopotential Height (dam) & MSLP (mb)

Init: 12z Jun 29 2026 Forecast Hour: [48] valid at 12z Wed, Jul 01 2026

TROPICALTIDBITS.COM

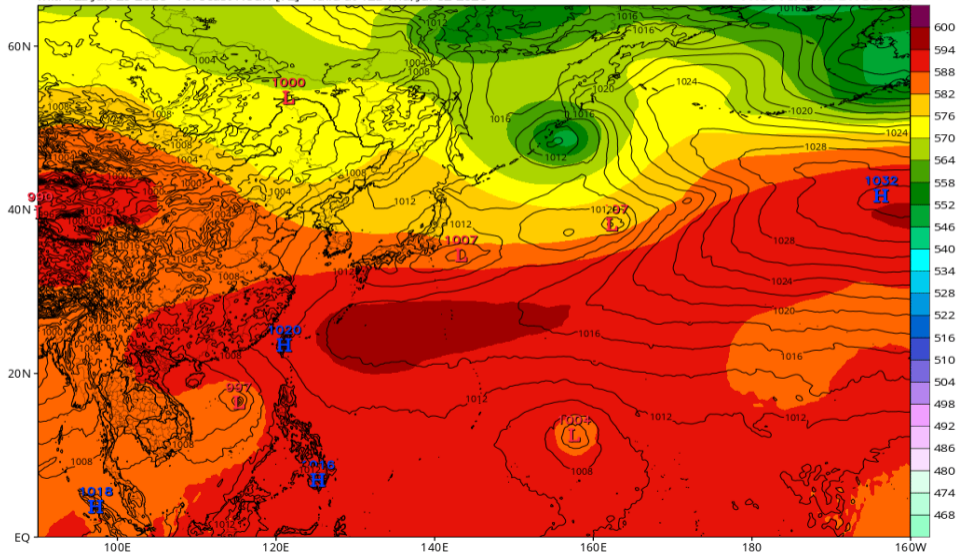


Z500/地上気圧配置 (ECMWF 07/02 12Z 予報)

ECMWF 500mb Geopotential Height (dam) & MSLP (mb)

Init: 12z Jun 29 2026 Forecast Hour: [72] valid at 12z Thu, Jul 02 2026

TROPICALTIDBITS.COM

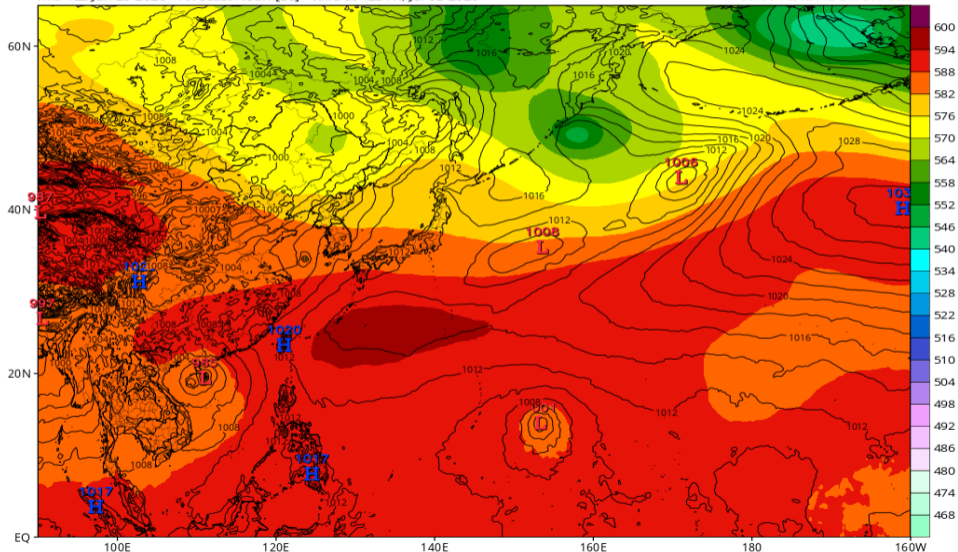


Z500/地上気圧配置 (ECMWF 07/03 12Z 予報)

ECMWF 500mb Geopotential Height (dam) & MSLP (mb)

Init: 12z Jun 29 2026 Forecast Hour: [96] valid at 12z Fri, Jul 03 2026

TROPICALTIDBITS.COM

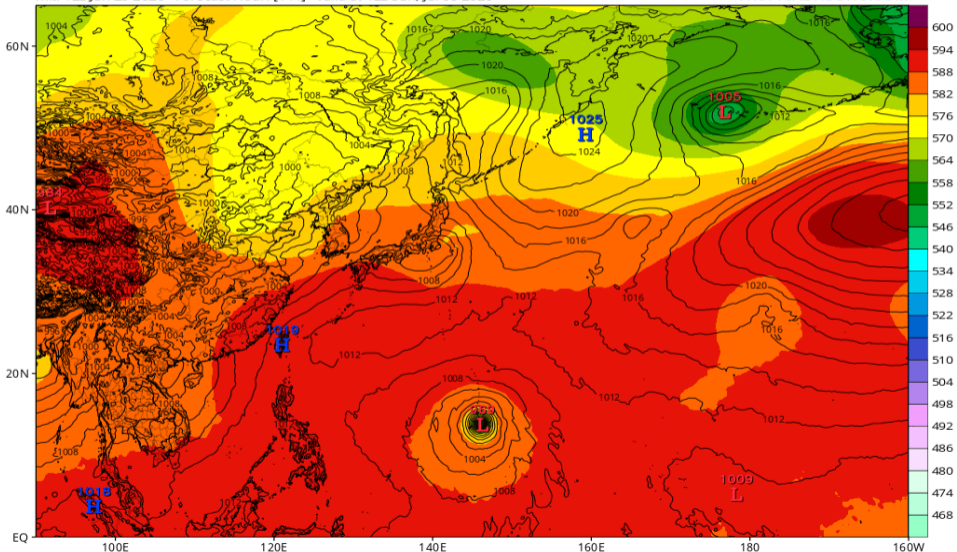


Z500/地上気圧配置 (ECMWF 07/05 12Z 予報)

ECMWF 500mb Geopotential Height (dam) & MSLP (mb)

Init: 12z Jun 29 2026 Forecast Hour: [144] valid at 12z SUN, Jul 05 2026

TROPICALTIDBITS.COM

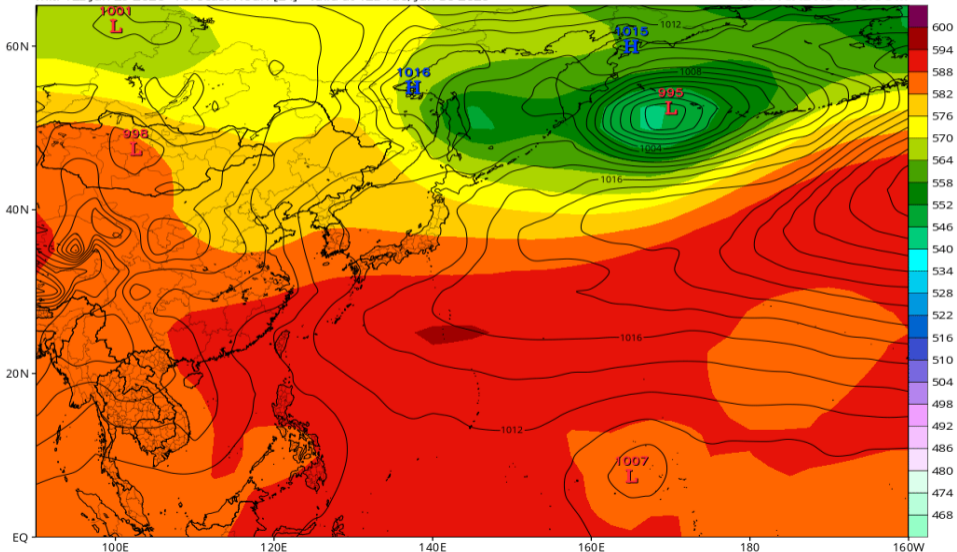


Z500/地上気圧配置 (JMA-GSM 06/30 12Z 予報)

JMA 500mb Geopotential Height (dam) & MSLP (mb)

Init: 12z Jun 29 2026 Forecast Hour: [24] valid at 12z Tue, Jun 30 2026

TROPICALTIDBITS.COM

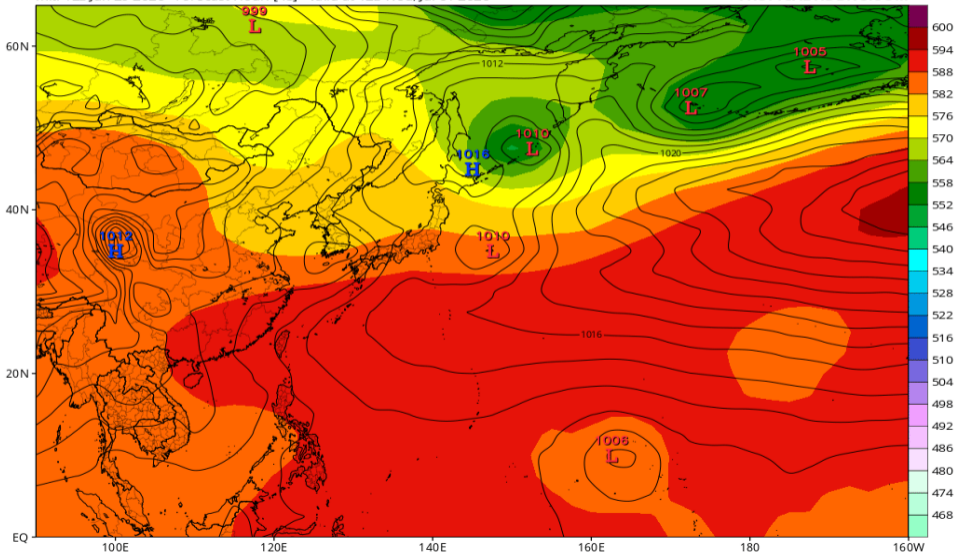


Z500/地上気圧配置 (JMA-GSM 07/01 12Z 予報)

JMA 500mb Geopotential Height (dam) & MSLP (mb)

Init: 12z Jun 29 2026 Forecast Hour: [48] valid at 12z Wed, Jul 01 2026

TROPICALTIDBITS.COM

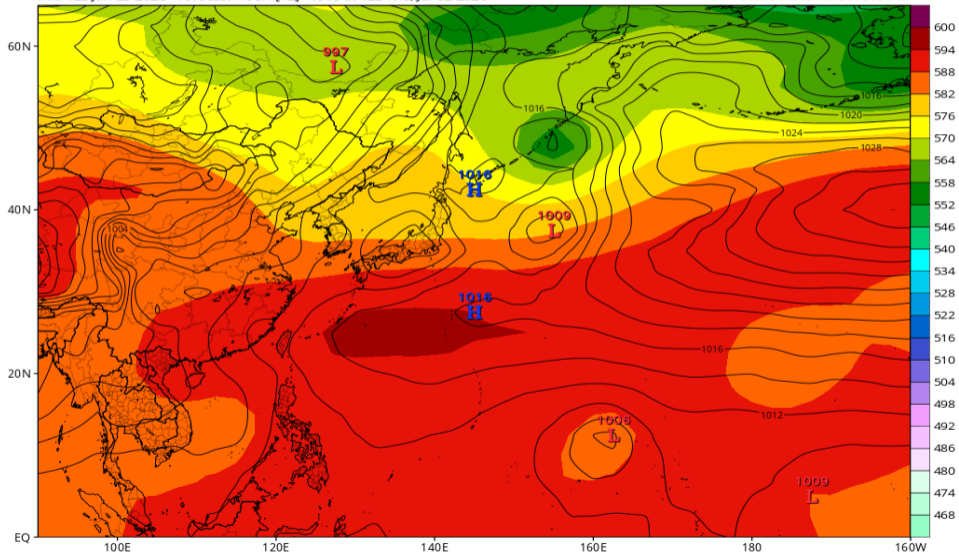


Z500/地上気圧配置 (JMA-GSM 07/02 12Z 予報)

JMA 500mb Geopotential Height (dam) & MSLP (mb)

Init: 12z Jun 29 2026 Forecast Hour: [72] valid at 12z Thu, Jul 02 2026

TROPICALTIDBITS.COM

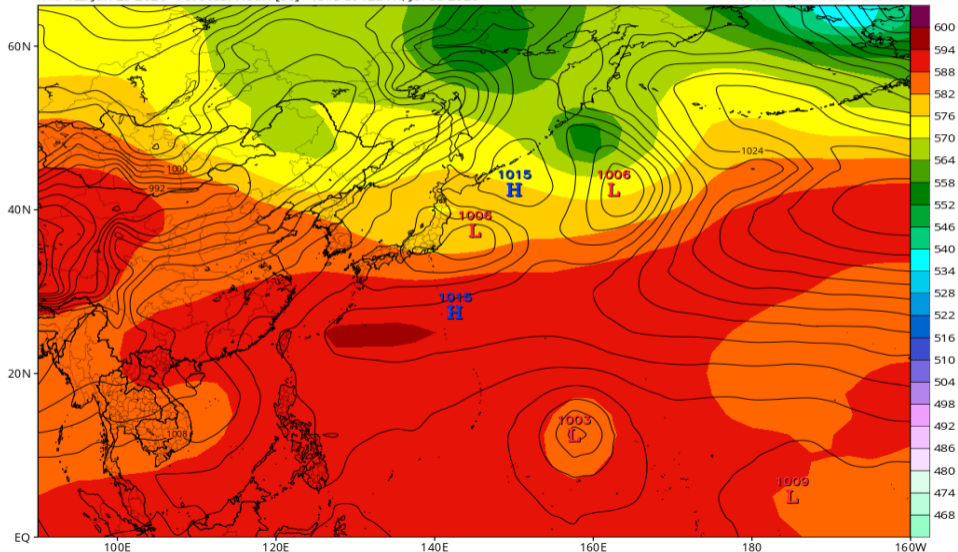


Z500/地上気圧配置 (JMA-GSM 07/03 12Z 予報)

JMA 500mb Geopotential Height (dam) & MSLP (mb)

Init: 12z Jun 29 2026 Forecast Hour: [96] valid at 12z Fri, Jul 03 2026

TROPICALTIDBITS.COM

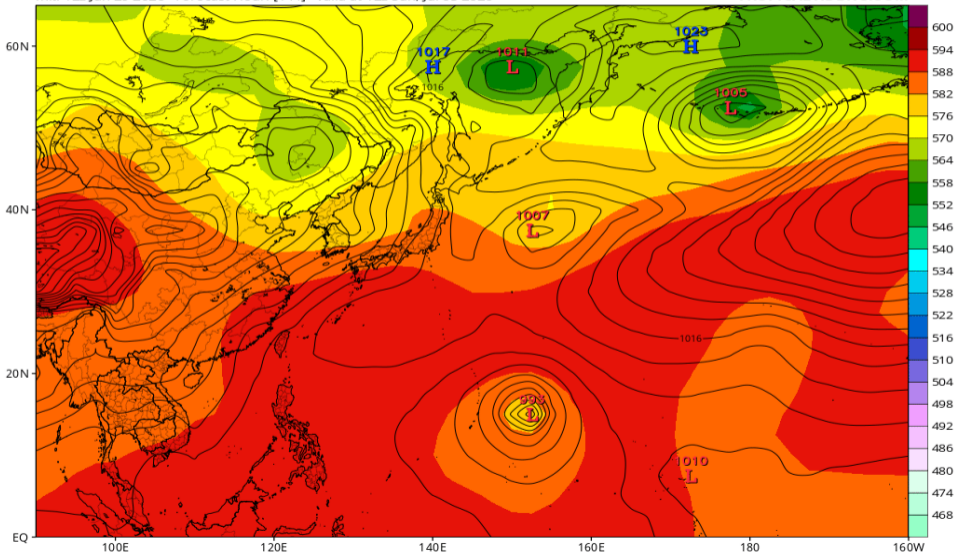


Z500/地上気圧配置 (JMA-GSM 07/05 12Z 予報)

JMA 500mb Geopotential Height (dam) & MSLP (mb)

Init: 12z Jun 29 2026 Forecast Hour: [144] valid at 12z Sun, Jul 05 2026

TROPICALTIDBITS.COM

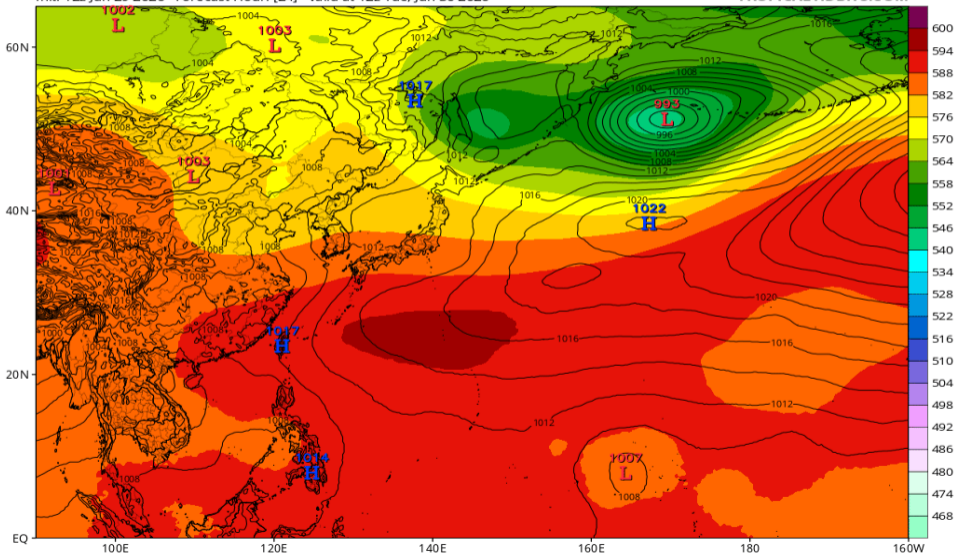


Z500/地上気圧配置 (AIFS 06/30 12Z 予報)

EC-AIFS 500mb Geopotential Height (dam) & MSLP (mb)

Init: 12z Jun 29 2026 Forecast Hour: [24] valid at 12z Tue, Jun 30 2026

TROPICALTIDBITS.COM

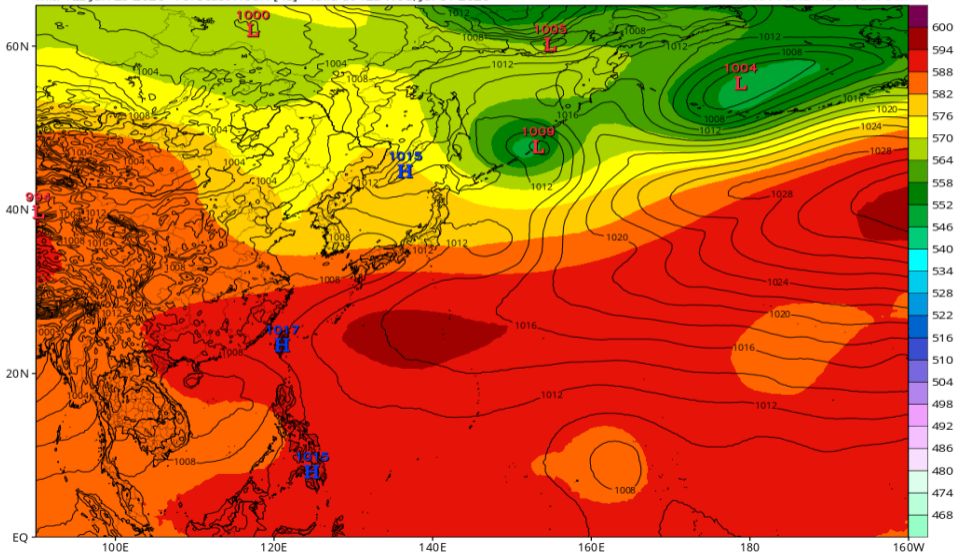


Z500/地上気圧配置 (AIFS 07/01 12Z 予報)

EC-AIFS 500mb Geopotential Height (dam) & MSLP (mb)

Init: 12z Jun 29 2026 Forecast Hour: [48] valid at 12z Wed, Jul 01 2026

TROPICALTIDBITS.COM

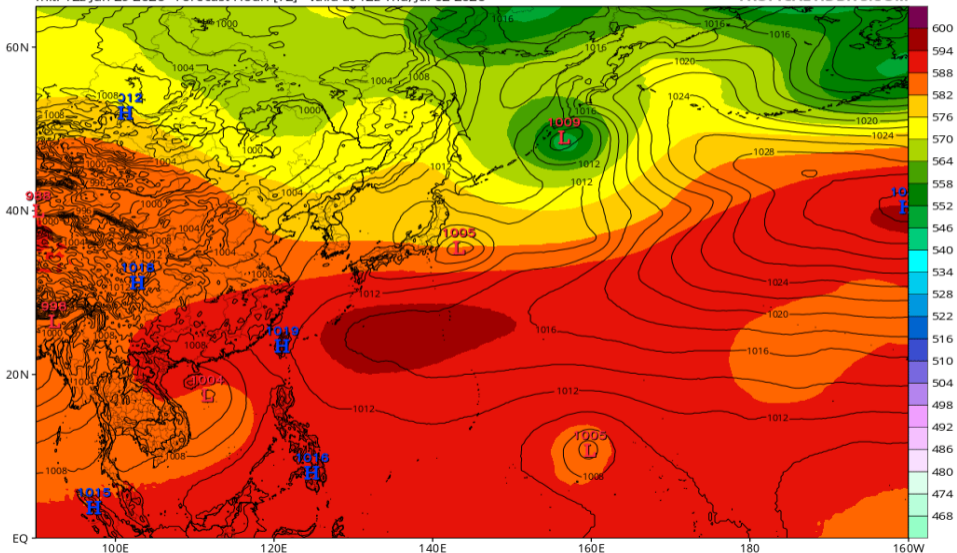


Z500/地上気圧配置 (AIFS 07/02 12Z 予報)

EC-AIFS 500mb Geopotential Height (dam) & MSLP (mb)

Init: 12z Jun 29 2026 Forecast Hour: [72] valid at 12z Thu, Jul 02 2026

TROPICALTIDBITS.COM

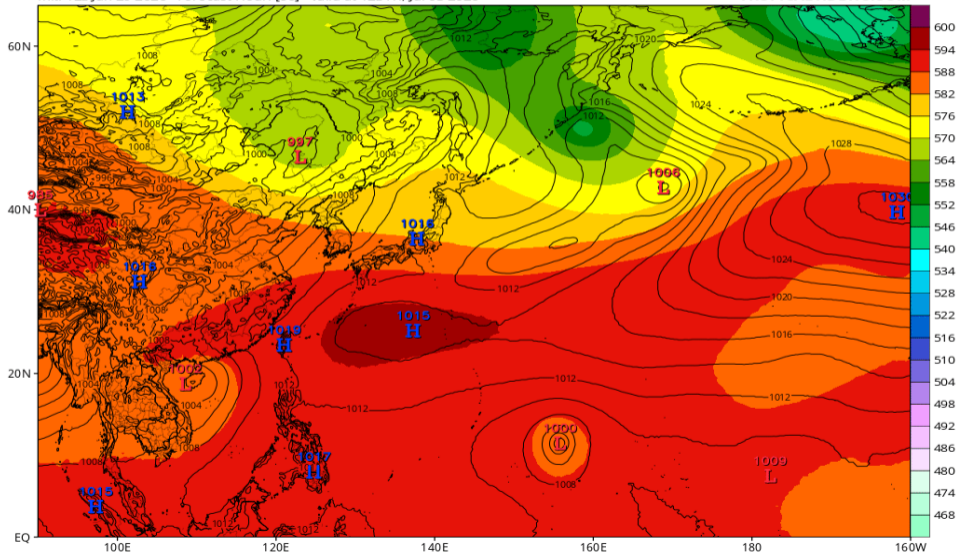


Z500/地上気圧配置 (AIFS 07/03 12Z 予報)

EC-AIFS 500mb Geopotential Height (dam) & MSLP (mb)

Init: 12z Jun 29 2026 Forecast Hour: [96] valid at 12z Fri, Jul 03 2026

TROPICALTIDBITS.COM

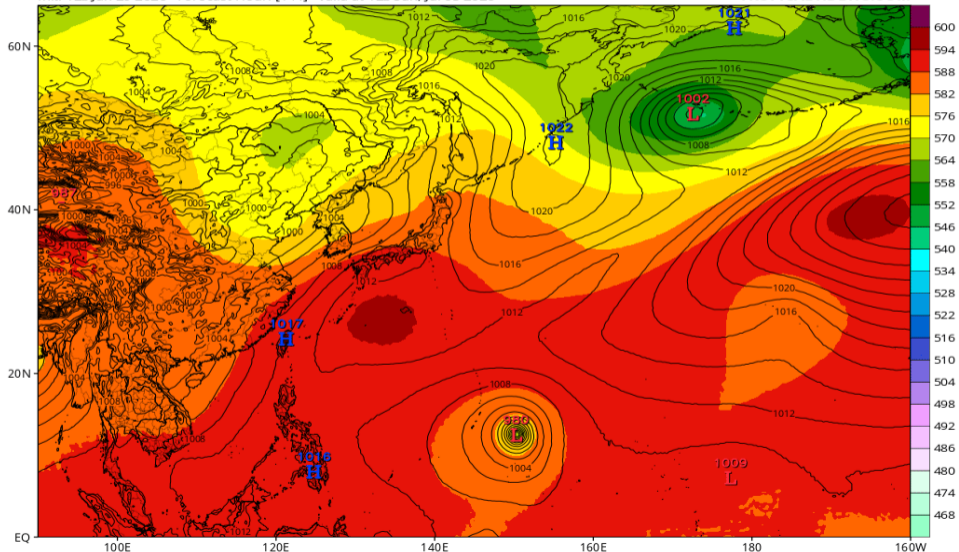


Z500/地上気圧配置 (AIFS 07/05 12Z 予報)

EC-AIFS 500mb Geopotential Height (dam) & MSLP (mb)

Init: 12z Jun 29 2026 Forecast Hour: [144] valid at 12z Sun, Jul 05 2026

TROPICALTIDBITS.COM

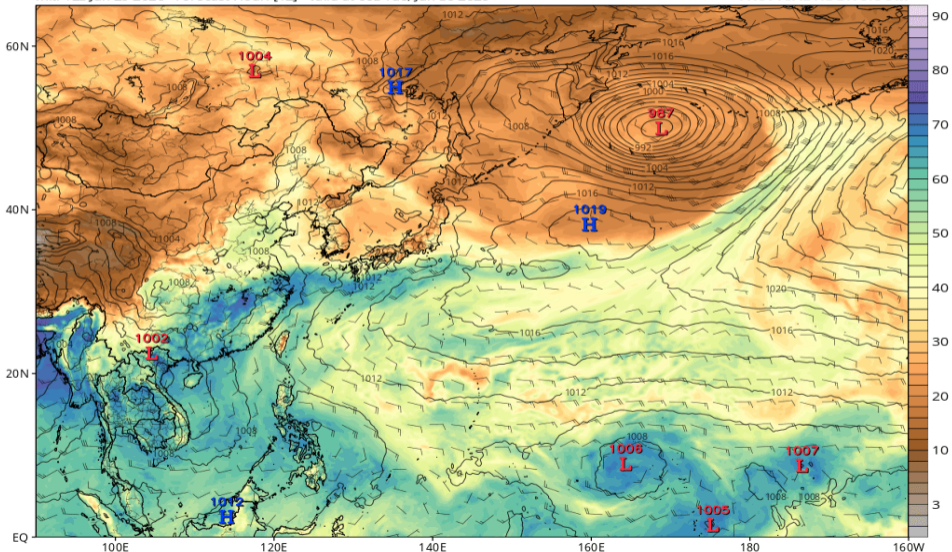


可降水量 (GFS 06/30 00Z 予報)

GFS MSLP (mb), Total Precipitable Water (mm), and 850mb Wind (kt)

Init: 12z Jun 29 2026 Forecast Hour: [12] valid at 00z Tue, Jun 30 2026

TROPICALTIDBITS.COM

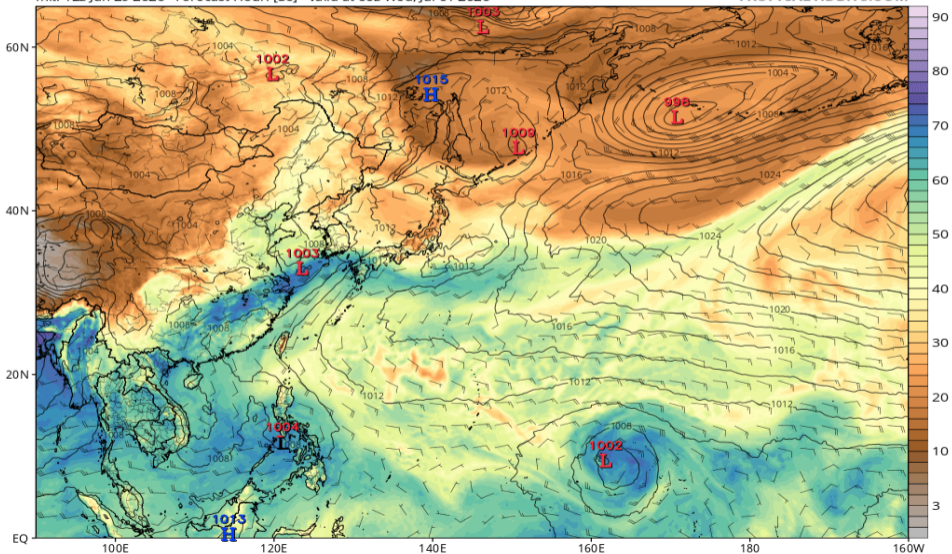


可降水量 (GFS 07/01 00Z 予報)

GFS MSLP (mb), Total Precipitable Water (mm), and 850mb Wind (kt)

Init: 12z Jun 29 2026 Forecast Hour: [36] valid at 00z Wed, Jul 01 2026

TROPICALTIDBITS.COM

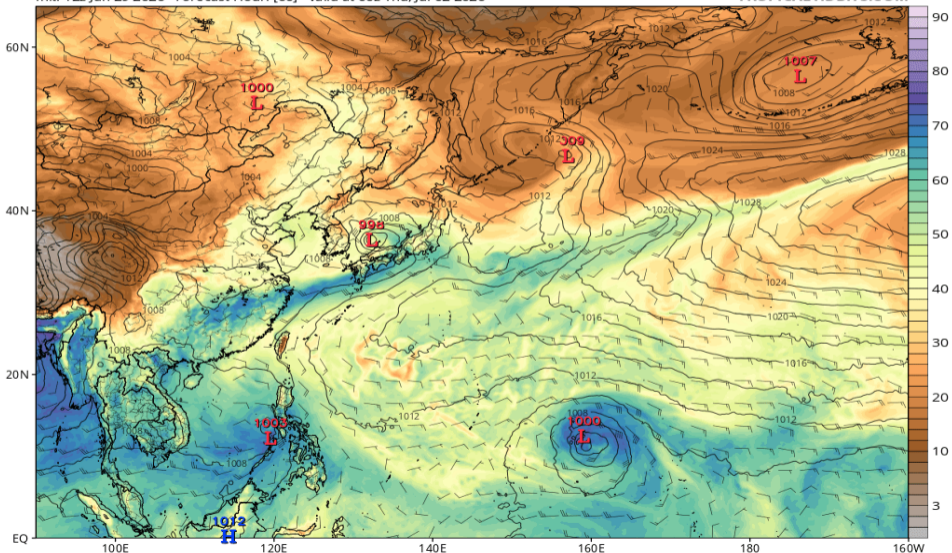


可降水量 (GFS 07/02 00Z 予報)

GFS MSLP (mb), Total Precipitable Water (mm), and 850mb Wind (kt)

Init: 12z Jun 29 2026 Forecast Hour: [60] valid at 00z Thu, Jul 02 2026

TROPICALTIDBITS.COM

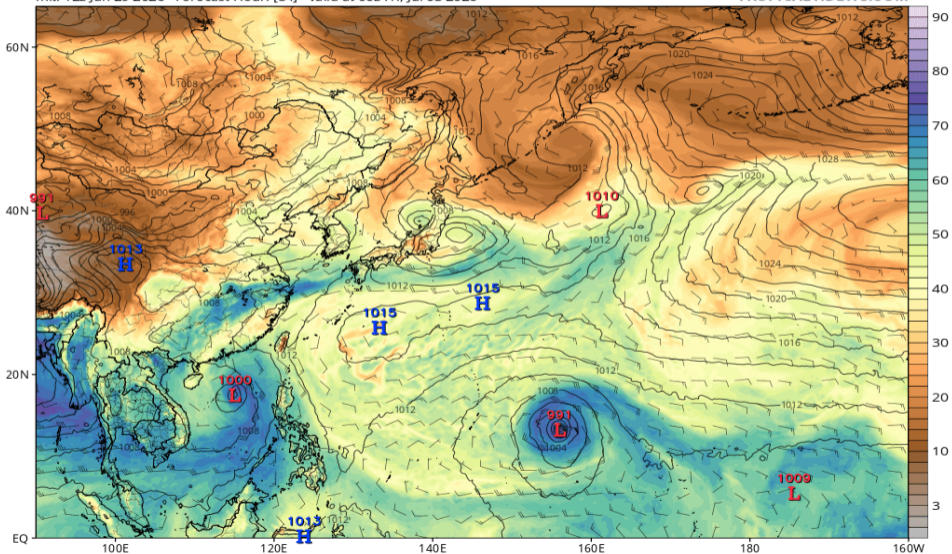


可降水量 (GFS 07/03 00Z 予報)

GFS MSLP (mb), Total Precipitable Water (mm), and 850mb Wind (kt)

Init: 12z Jun 29 2026 Forecast Hour: [84] valid at 00z Fri, Jul 03 2026

TROPICALTIDBITS.COM

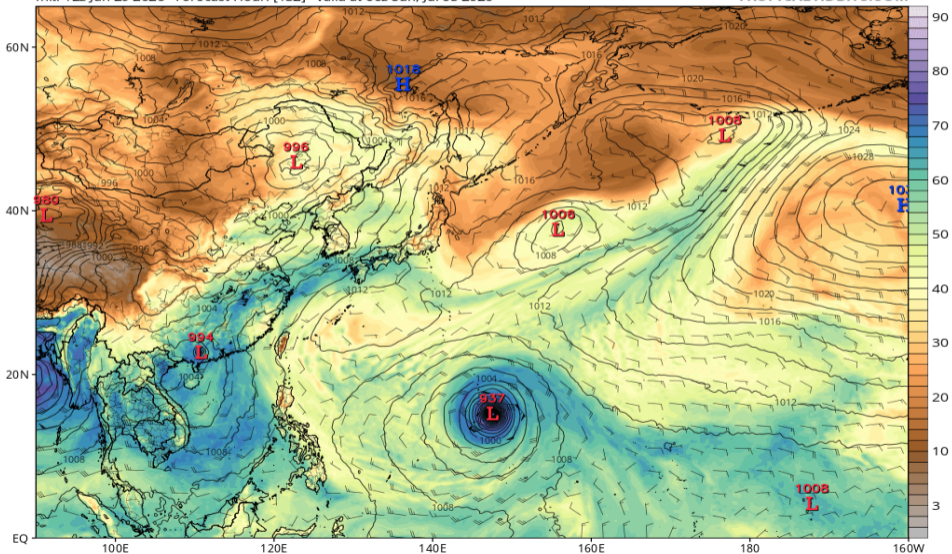


可降水量 (GFS 07/05 00Z 予報)

GFS MSLP (mb), Total Precipitable Water (mm), and 850mb Wind (kt)

Init: 12z Jun 29 2026 Forecast Hour: [132] valid at 00z Sun, Jul 05 2026

TROPICALTIDBITS.COM

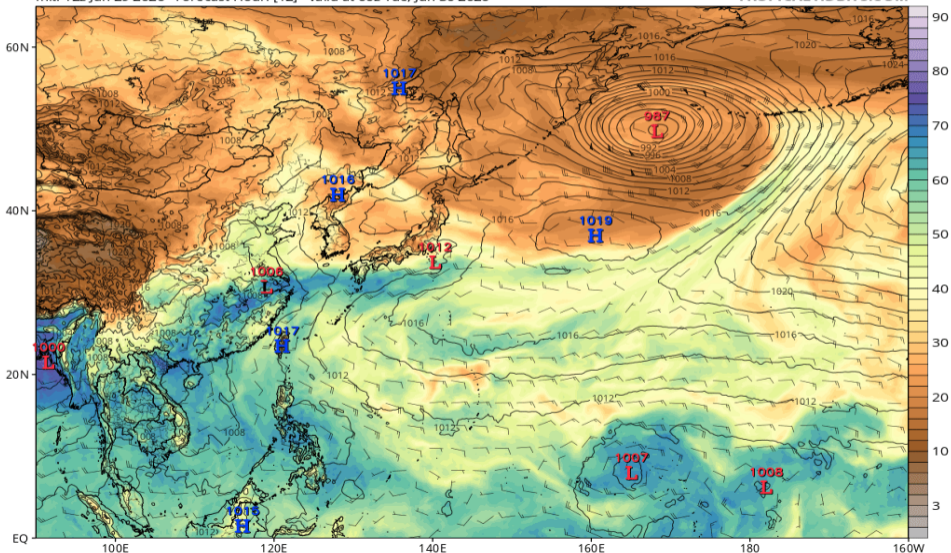


可降水量 (ECMWF 06/30 00Z 予報)

ECMWF MSLP (mb), Total Precipitable Water (mm), and 850mb Wind (kt)

Init: 12z Jun 29 2026 Forecast Hour: [12] valid at 00z Tue, Jun 30 2026

TROPICALTIDBITS.COM

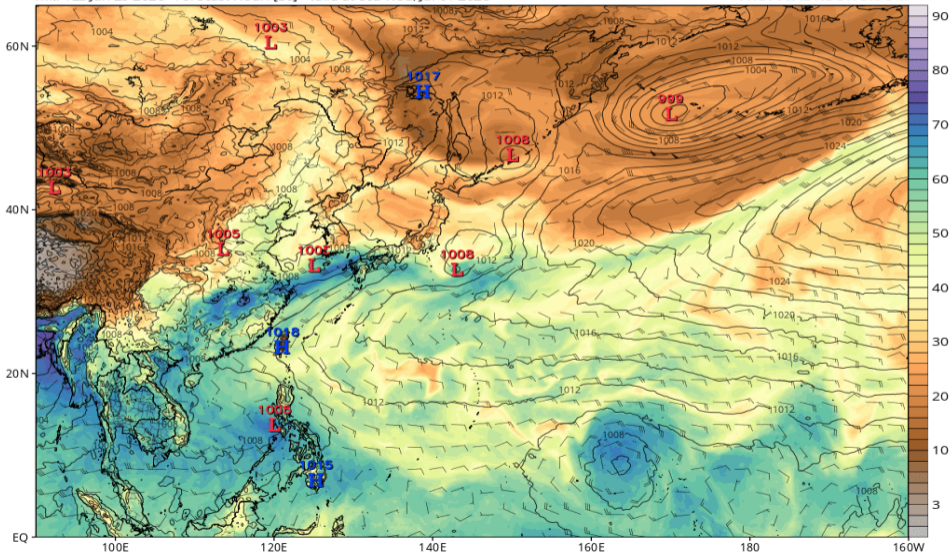


可降水量 (ECMWF 07/01 00Z 予報)

ECMWF MSLP (mb), Total Precipitable Water (mm), and 850mb Wind (kt)

Init: 12z Jun 29 2026 Forecast Hour: [36] valid at 00z Wed, Jul 01 2026

TROPICALTIDBITS.COM

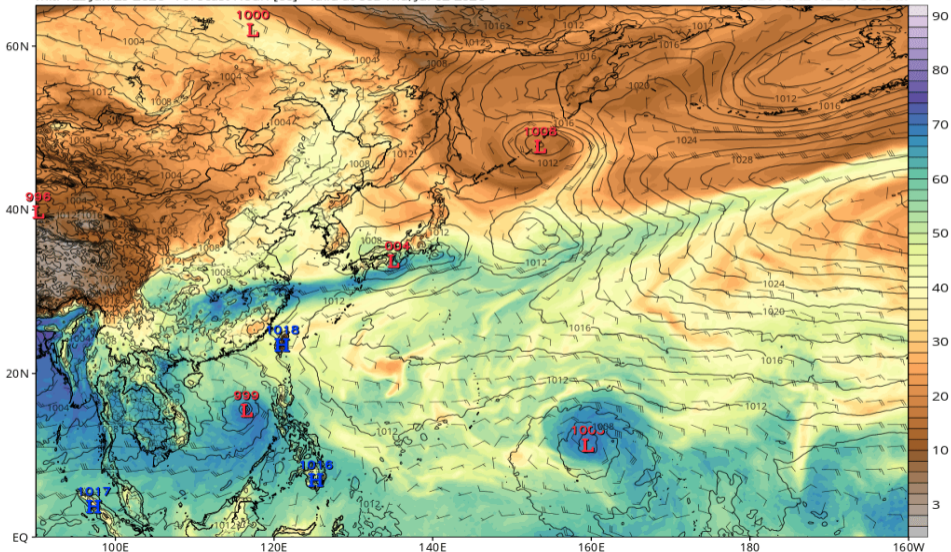


可降水量 (ECMWF 07/02 00Z 予報)

ECMWF MSLP (mb), Total Precipitable Water (mm), and 850mb Wind (kt)

Init: 12z Jun 29 2026 Forecast Hour: [60] valid at 00z Thu, Jul 02 2026

TROPICALTIDBITS.COM

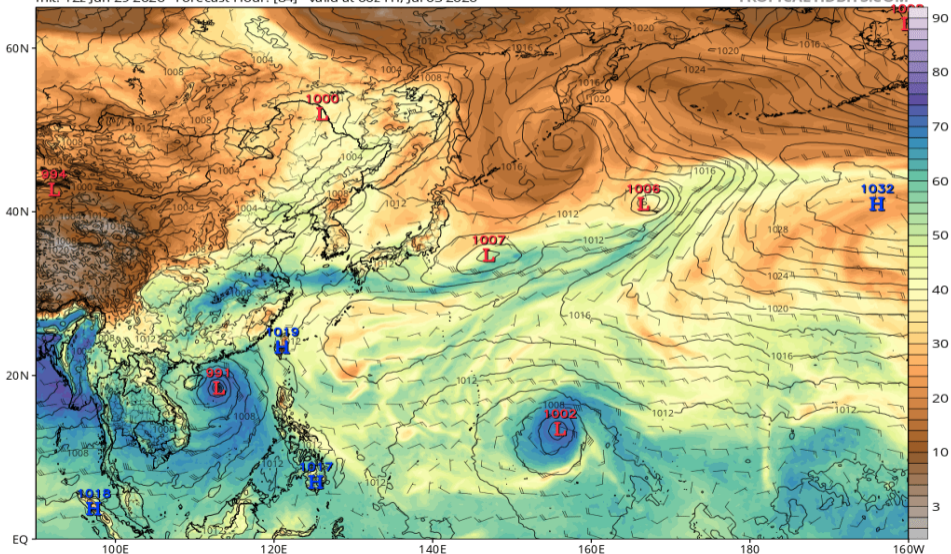


可降水量 (ECMWF 07/03 00Z 予報)

ECMWF MSLP (mb), Total Precipitable Water (mm), and 850mb Wind (kt)

Init: 12z Jun 29 2026 Forecast Hour: [84] valid at 00z Fri, Jul 03 2026

TROPICALTIDBITS.COM

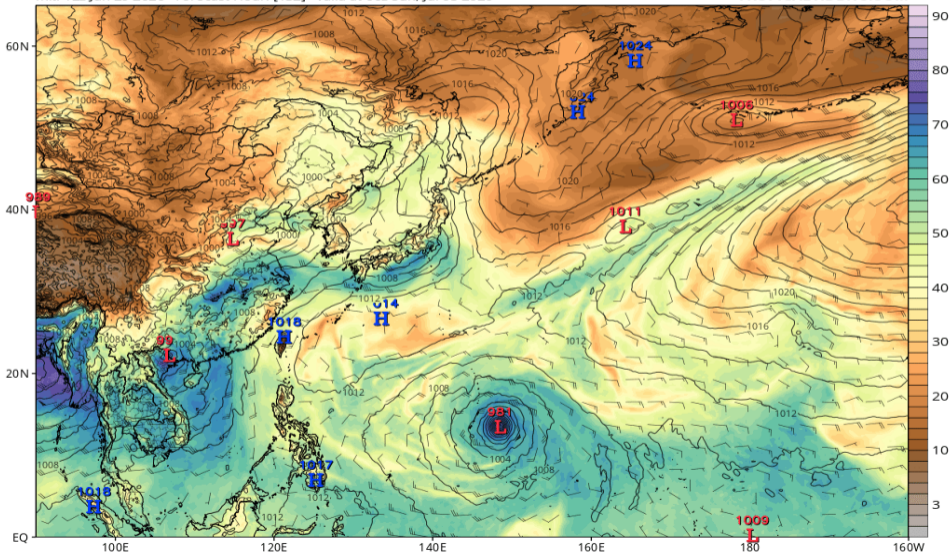


可降水量 (ECMWF 07/05 00Z 予報)

ECMWF MSLP (mb), Total Precipitable Water (mm), and 850mb Wind (kt)

Init: 12z Jun 29 2026 Forecast Hour: [132] valid at 00z Sun, Jul 05 2026

TROPICALTIDBITS.COM

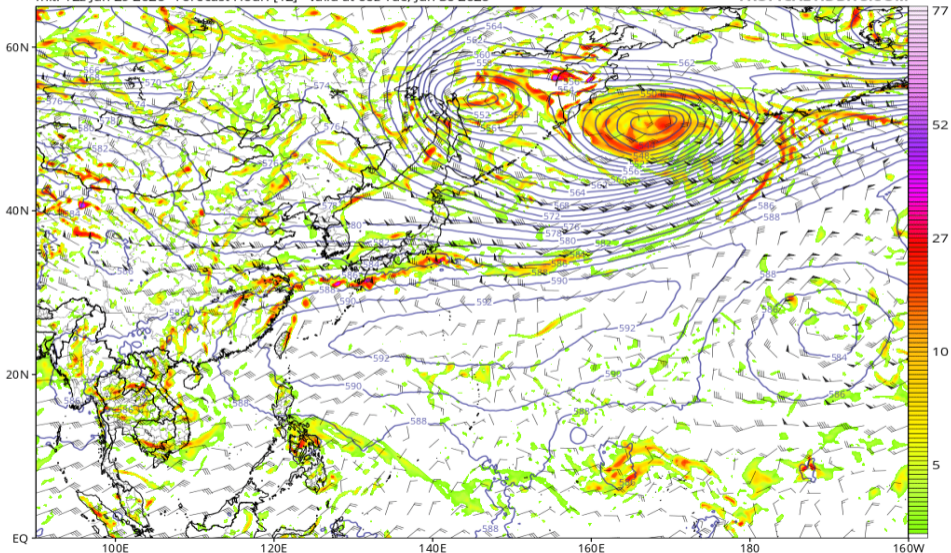


渦度 850, Z500, UV200 (GFS 06/30 00Z 予報)

GFS 850 hPa Cyclonic Vorticity (10^5 s^{-1}), 500 hPa Height (dam), and 200 hPa Wind (kt)

Init: 12z Jun 29 2026 Forecast Hour: [12] valid at 00z Tue, Jun 30 2026

TROPICALTIDBITS.COM

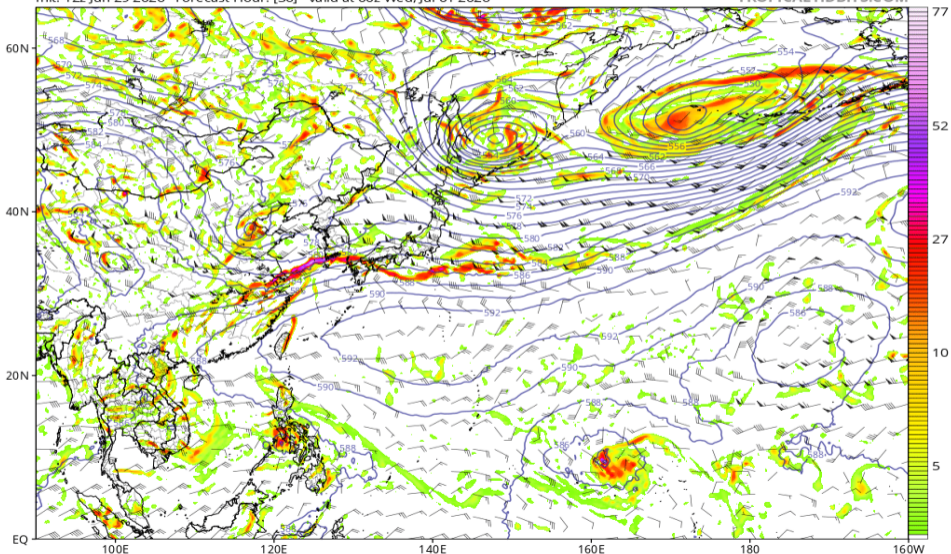


渦度 850, Z500, UV200 (GFS 07/01 00Z 予報)

GFS 850 hPa Cyclonic Vorticity (10^5 s^{-1}), 500 hPa Height (dam), and 200 hPa Wind (kt)

Init: 12z Jun 29 2026 Forecast Hour: [36] valid at 00z Wed, Jul 01 2026

TROPICALTIDBITS.COM

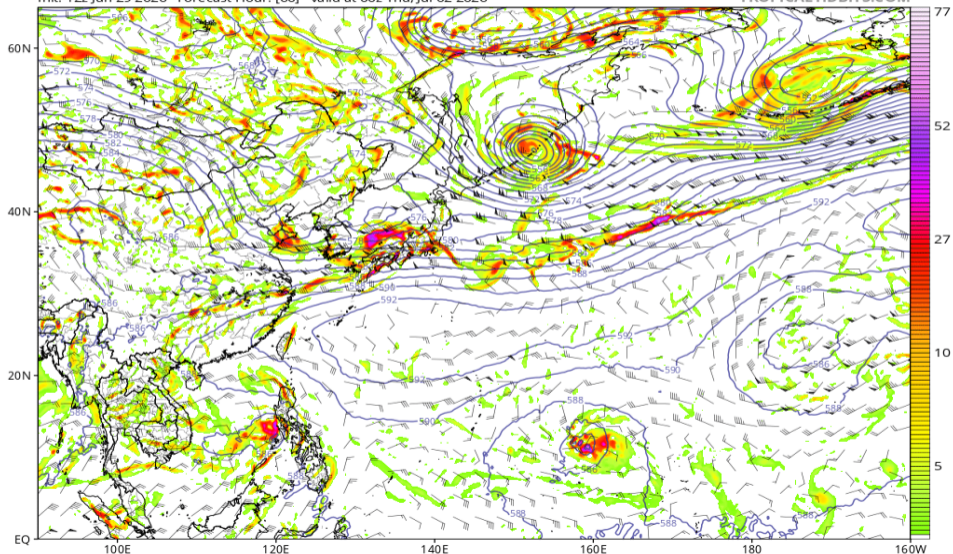


渦度 850, Z500, UV200 (GFS 07/02 00Z 予報)

GFS 850 hPa Cyclonic Vorticity (10^5 s^{-1}), 500 hPa Height (dam), and 200 hPa Wind (kt)

Init: 12z Jun 29 2026 Forecast Hour: [60] valid at 00z Thu, Jul 02 2026

TROPICALTIDBITS.COM

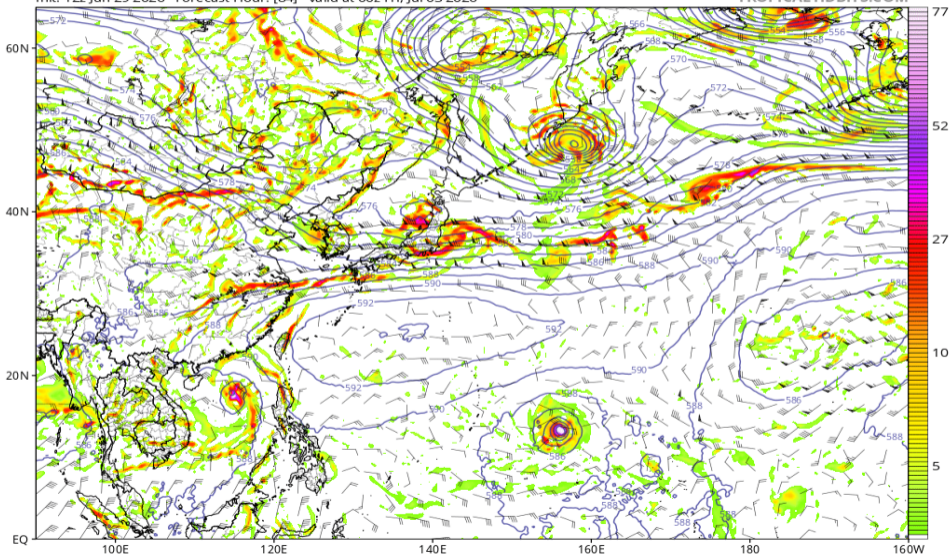


渦度 850, Z500, UV200 (GFS 07/03 00Z 予報)

GFS 850 hPa Cyclonic Vorticity (10^5 s^{-1}), 500 hPa Height (dam), and 200 hPa Wind (kt)

Init: 12z Jun 29 2026 Forecast Hour: [84] valid at 00z Fri, Jul 03 2026

TROPICALTIDBITS.COM

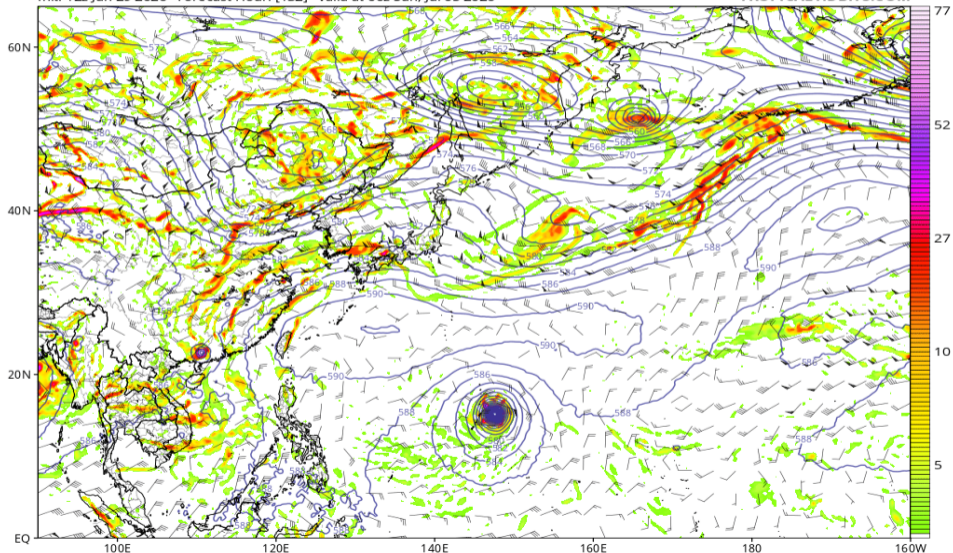


渦度 850, Z500, UV200 (GFS 07/05 00Z 予報)

GFS 850 hPa Cyclonic Vorticity (10^5 s^{-1}), 500 hPa Height (dam), and 200 hPa Wind (kt)

Init: 12z Jun 29 2026 Forecast Hour: [132] valid at 00z Sun, Jul 05 2026

TROPICALTIDBITS.COM

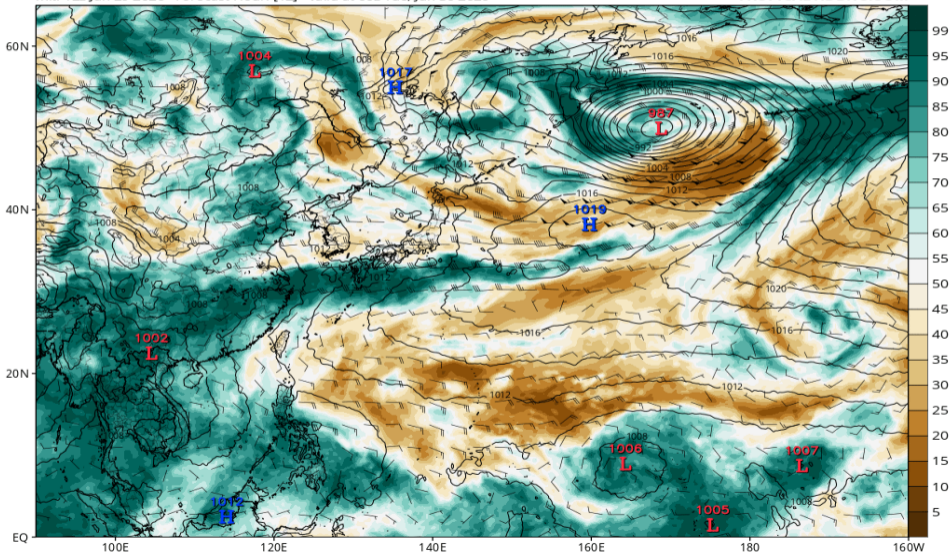


RH700-300 (GFS 06/30 00Z 予報)

GFS MSLP (mb), 700-300 hPa Relative Humidity (%), and 700-300 hPa Wind (kt)

Init: 12z Jun 29 2026 Forecast Hour: [12] valid at 00z Tue, Jun 30 2026

TROPICALTIDBITS.COM

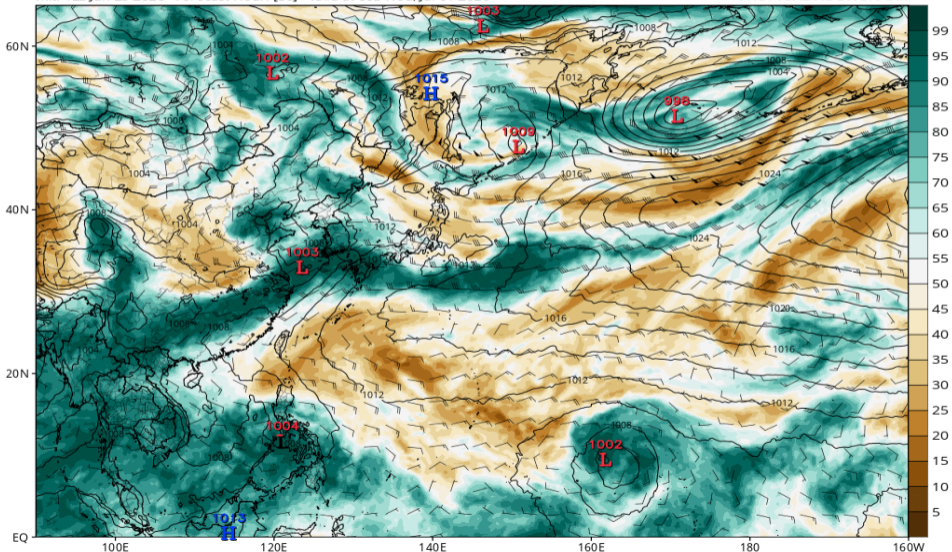


RH700-300 (GFS 07/01 00Z 予報)

GFS MSLP (mb), 700-300 hPa Relative Humidity (%), and 700-300 hPa Wind (kt)

Init: 12z Jun 29 2026 Forecast Hour: [36] valid at 00z Wed, Jul 01 2026

TROPICALTIDBITS.COM

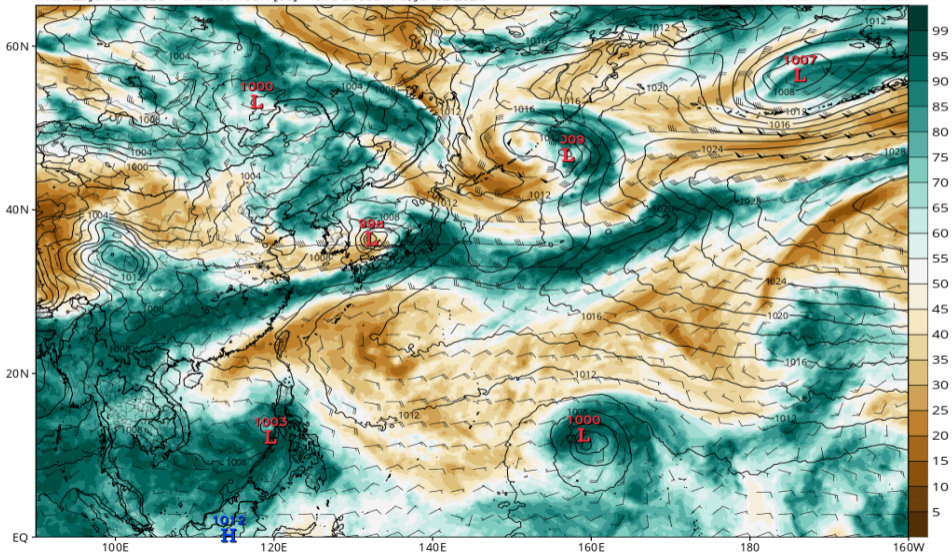


RH700-300 (GFS 07/02 00Z 予報)

GFS MSLP (mb), 700-300 hPa Relative Humidity (%), and 700-300 hPa Wind (kt)

Init: 12z Jun 29 2026 Forecast Hour: [60] valid at 00z Thu, Jul 02 2026

TROPICALTIDBITS.COM

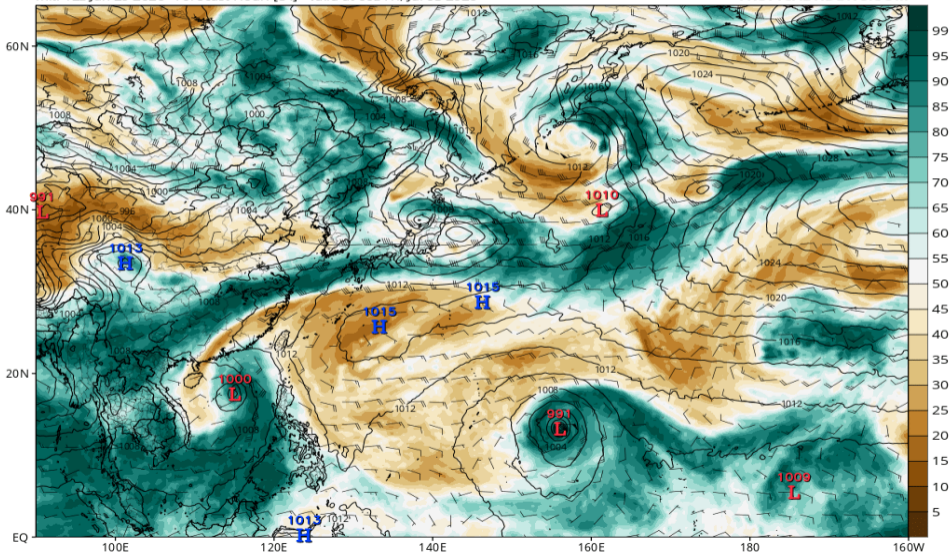


RH700-300 (GFS 07/03 00Z 予報)

GFS MSLP (mb), 700-300 hPa Relative Humidity (%), and 700-300 hPa Wind (kt)

Init: 12z Jun 29 2026 Forecast Hour: [84] valid at 00z Fri, Jul 03 2026

TROPICALTIDBITS.COM

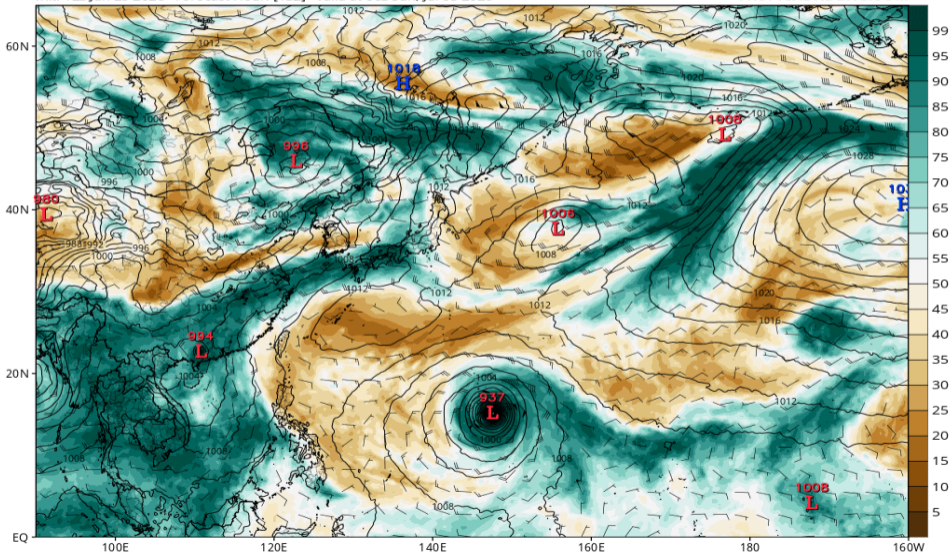


RH700-300 (GFS 07/05 00Z 予報)

GFS MSLP (mb), 700-300 hPa Relative Humidity (%), and 700-300 hPa Wind (kt)

Init: 12z Jun 29 2026 Forecast Hour: [132] valid at 00z Sun, Jul 05 2026

TROPICALTIDBITS.COM

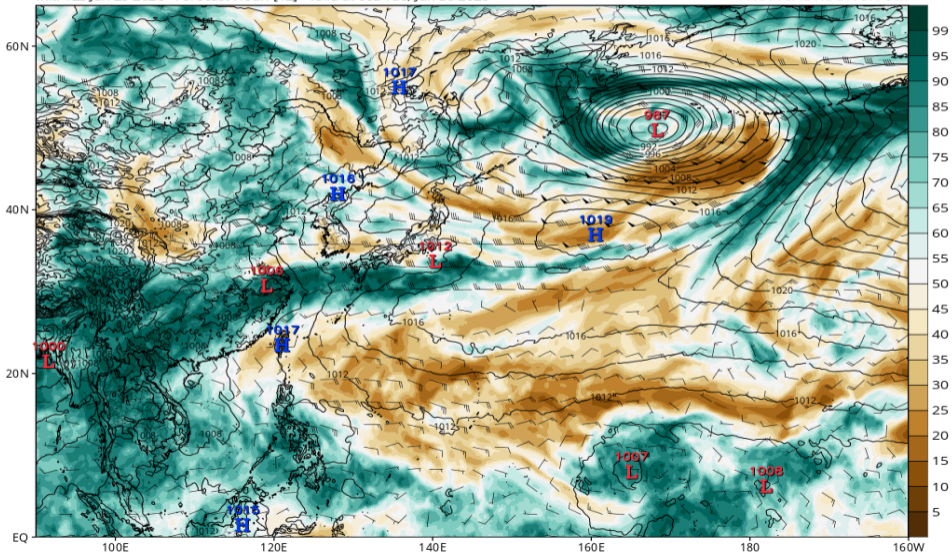


RH700-300 (ECMWF 06/30 00Z 予報)

ECMWF MSLP (mb), 700-300 hPa Relative Humidity (%), and 700-300 hPa Wind (kt)

Init: 12z Jun 29 2026 Forecast Hour: [12] valid at 00z Tue, Jun 30 2026

TROPICALTIDBITS.COM

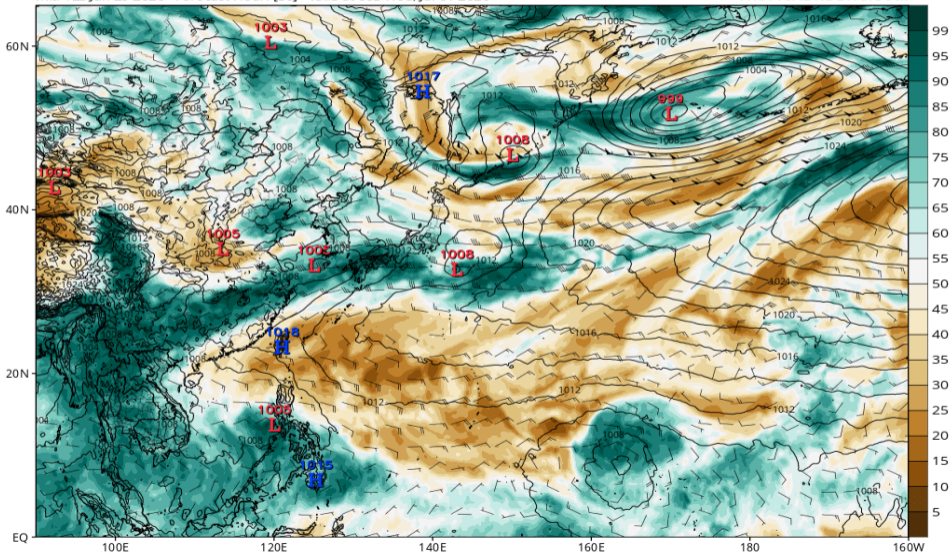


RH700-300 (ECMWF 07/01 00Z 予報)

ECMWF MSLP (mb), 700-300 hPa Relative Humidity (%), and 700-300 hPa Wind (kt)

Init: 12z Jun 29 2026 Forecast Hour: [36] valid at 00z Wed, Jul 01 2026

TROPICALTIDBITS.COM

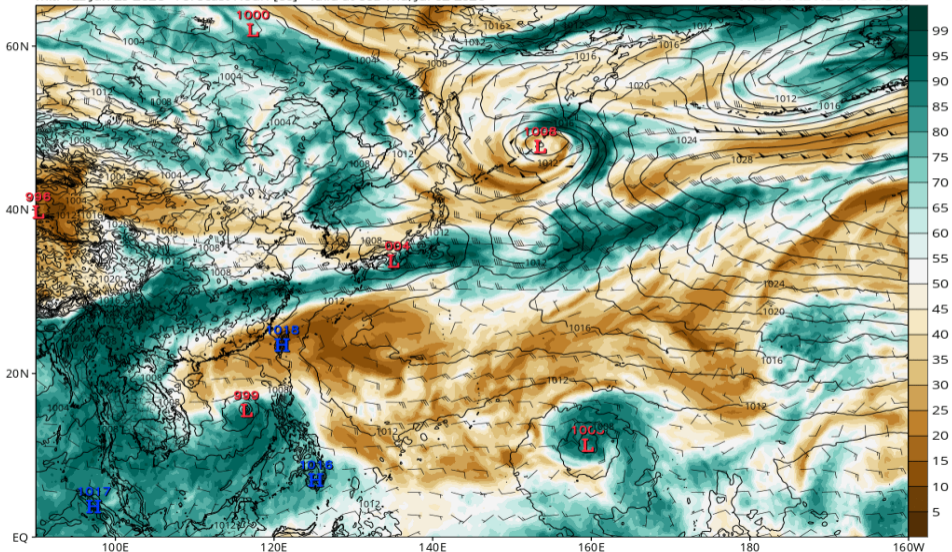


RH700-300 (ECMWF 07/02 00Z 予報)

ECMWF MSLP (mb), 700-300 hPa Relative Humidity (%), and 700-300 hPa Wind (kt)

Init: 12z Jun 29 2026 Forecast Hour: [60] valid at 00z Thu, Jul 02 2026

TROPICALTIDBITS.COM

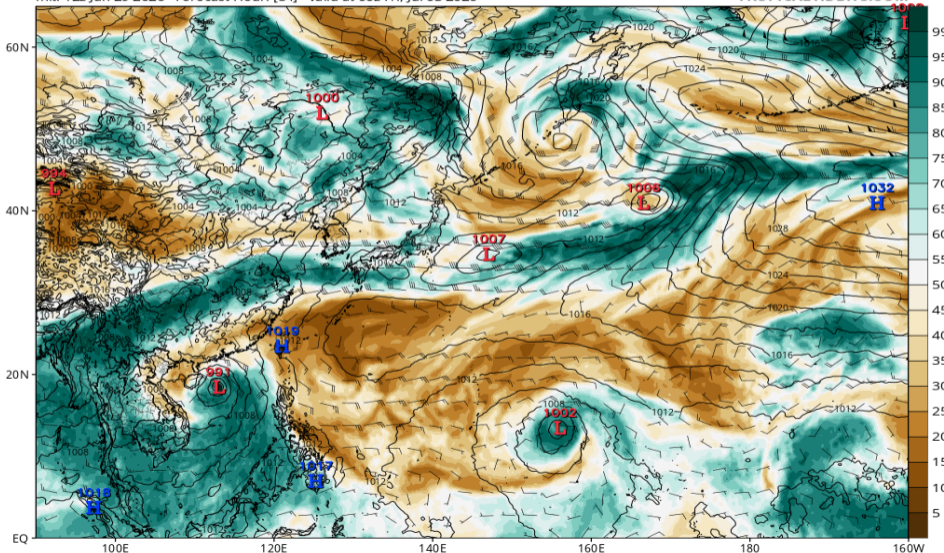


RH700-300 (ECMWF 07/03 00Z 予報)

ECMWF MSLP (mb), 700-300 hPa Relative Humidity (%), and 700-300 hPa Wind (kt)

Init: 12z Jun 29 2026 Forecast Hour: [84] valid at 00z Fri, Jul 03 2026

TROPICALTIDBITS.COM

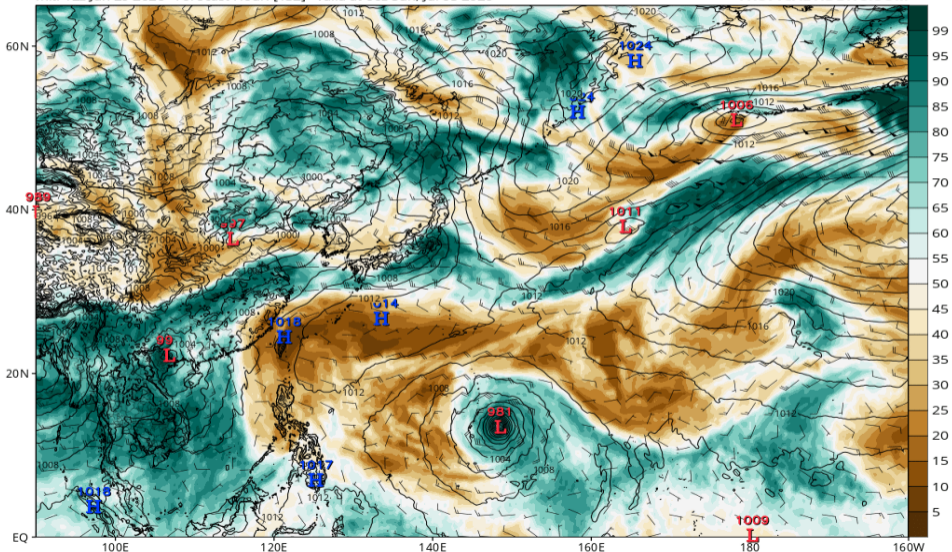


RH700-300 (ECMWF 07/05 00Z 予報)

ECMWF MSLP (mb), 700-300 hPa Relative Humidity (%), and 700-300 hPa Wind (kt)

Init: 12z Jun 29 2026 Forecast Hour: [132] valid at 00z Sun, Jul 05 2026

TROPICALTIDBITS.COM

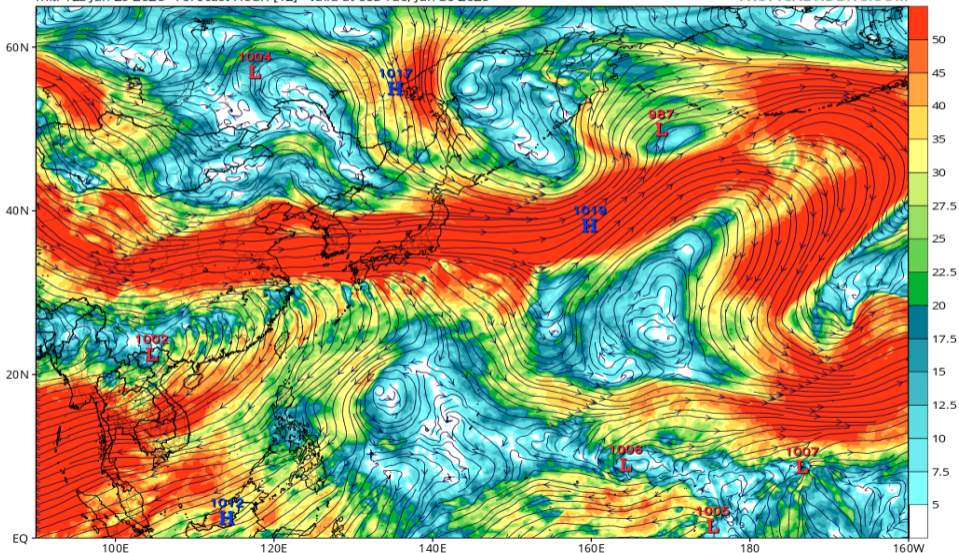


Wshear850-200 (GFS 06/30 00Z 予報)

GFS 200mb-850mb Wind Shear (knots) & Low Centers (mb)

Init: 12z Jun 29 2026 Forecast Hour: [12] valid at 00z Tue, Jun 30 2026

TROPICALTIDBITS.COM

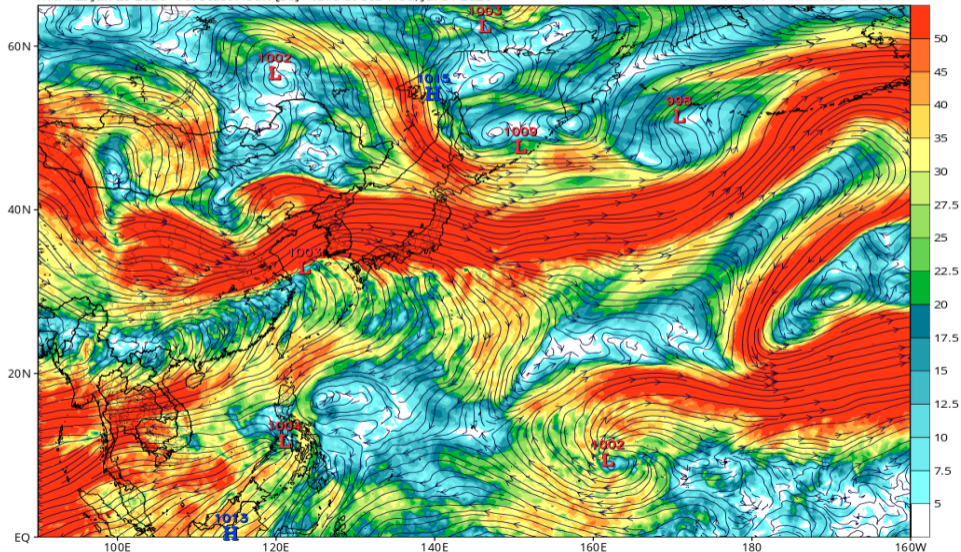


Wshear850-200 (GFS 07/01 00Z 予報)

GFS 200mb-850mb Wind Shear (knots) & Low Centers (mb)

Init: 12z Jun 29 2026 Forecast Hour: [36] valid at 00z Wed, Jul 01 2026

TROPICALTIDBITS.COM

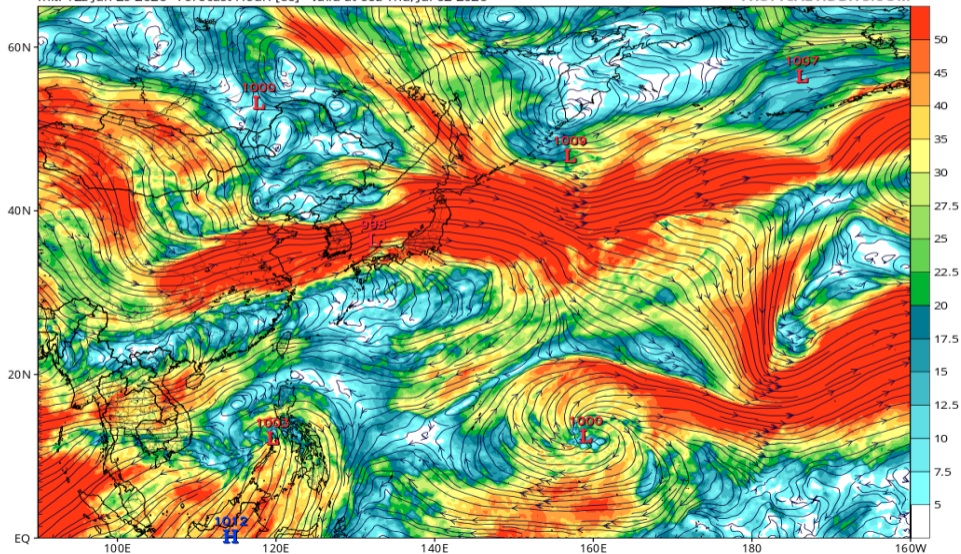


Wshear850-200 (GFS 07/02 00Z 予報)

GFS 200mb-850mb Wind Shear (knots) & Low Centers (mb)

Init: 12z Jun 29 2026 Forecast Hour: [60] valid at 00z Thu, Jul 02 2026

TROPICALTIDBITS.COM

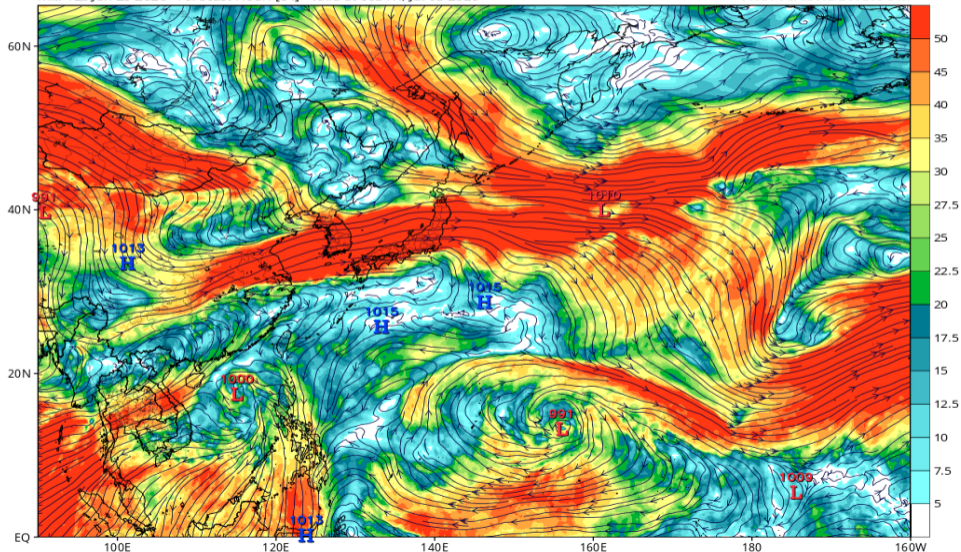


Wshear850-200 (GFS 07/03 00Z 予報)

GFS 200mb-850mb Wind Shear (knots) & Low Centers (mb)

Init: 12z Jun 29 2026 Forecast Hour: [84] valid at 00z Fri, Jul 03 2026

TROPICALTIDBITS.COM

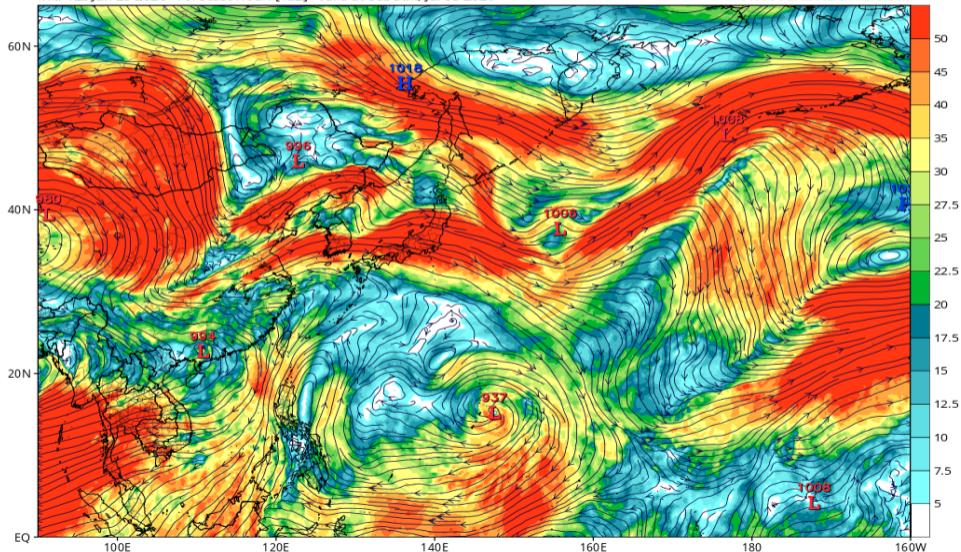


Wshear850-200 (GFS 07/05 00Z 予報)

GFS 200mb-850mb Wind Shear (knots) & Low Centers (mb)

Init: 12z Jun 29 2026 Forecast Hour: [132] valid at 00z Sun, Jul 05 2026

TROPICALTIDBITS.COM

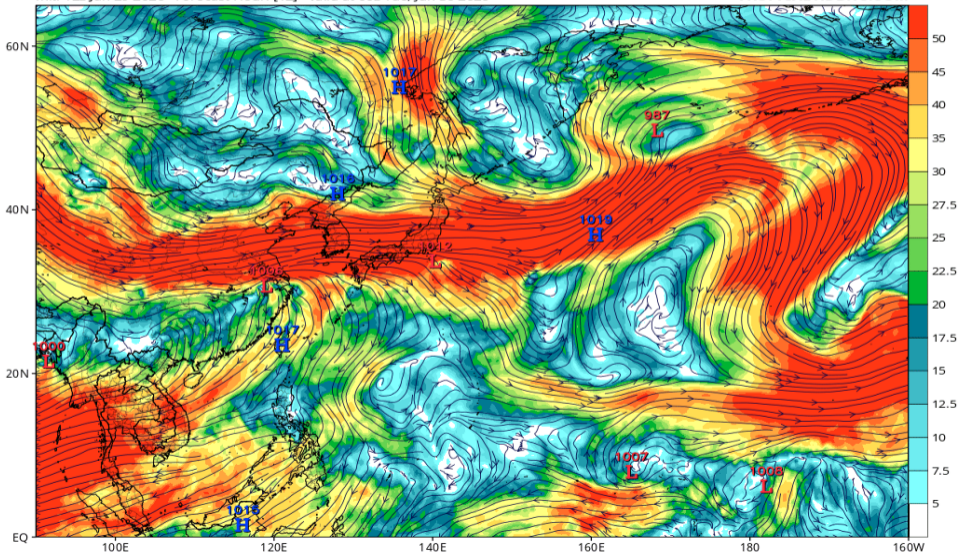


Wshear850-200 (ECMWF 06/30 00Z 予報)

ECMWF 200mb-850mb Wind Shear (knots) & Low Centers (mb)

Init: 12z Jun 29 2026 Forecast Hour: [12] valid at 00z Tue, Jun 30 2026

TROPICALTIDBITS.COM

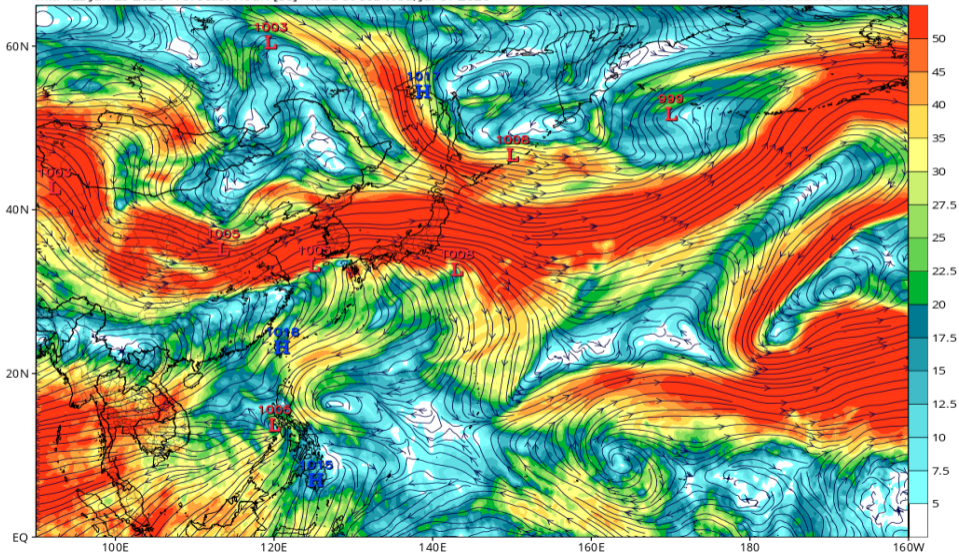


Wshear850-200 (ECMWF 07/01 00Z 予報)

ECMWF 200mb-850mb Wind Shear (knots) & Low Centers (mb)

Init: 12z Jun 29 2026 Forecast Hour: [36] valid at 00z Wed, Jul 01 2026

TROPICALTIDBITS.COM

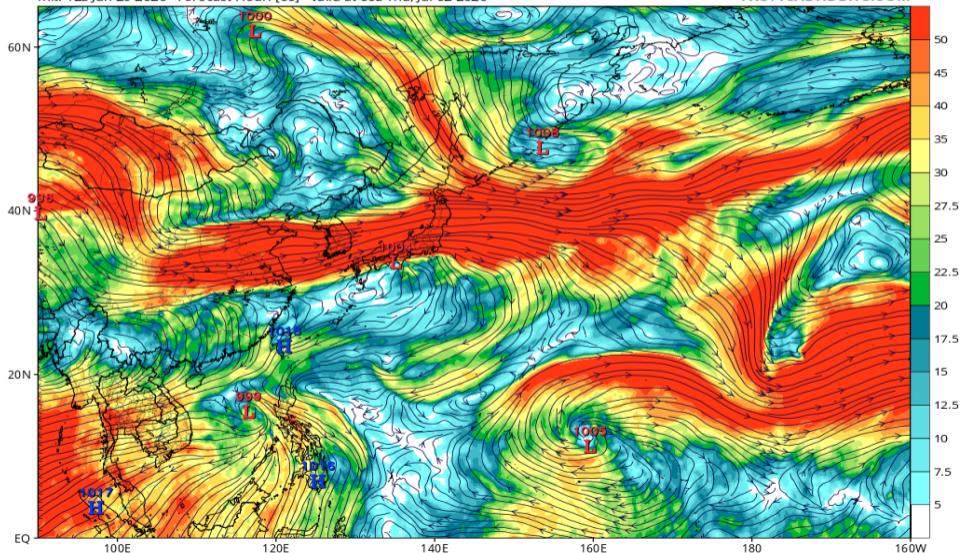


Wshear850-200 (ECMWF 07/02 00Z 予報)

ECMWF 200mb-850mb Wind Shear (knots) & Low Centers (mb)

Init: 12z Jun 29 2026 Forecast Hour: [60] valid at 00z Thu, Jul 02 2026

TROPICALTIDBITS.COM

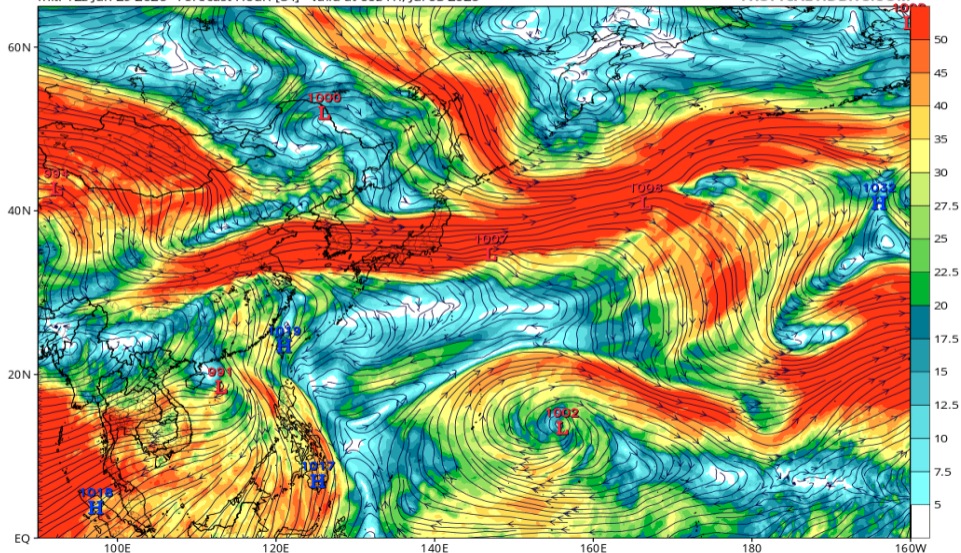


Wshear850-200 (ECMWF 07/03 00Z 予報)

ECMWF 200mb-850mb Wind Shear (knots) & Low Centers (mb)

Init: 12z Jun 29 2026 Forecast Hour: [84] valid at 00z Fri, Jul 03 2026

TROPICALTIDBITS.COM

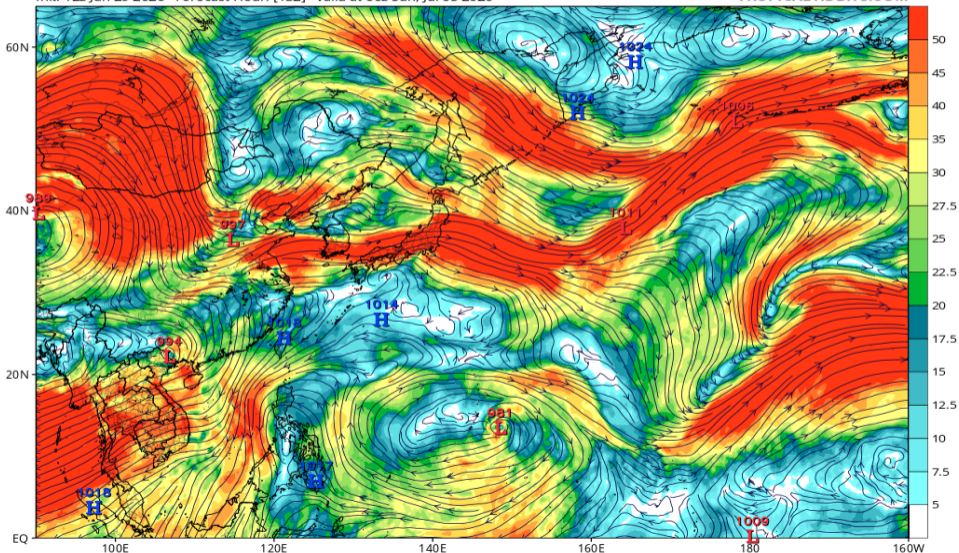


Wshear850-200 (ECMWF 07/05 00Z 予報)

ECMWF 200mb-850mb Wind Shear (knots) & Low Centers (mb)

Init: 12z Jun 29 2026 Forecast Hour: [132] valid at 00z Sun, Jul 05 2026

TROPICALTIDBITS.COM

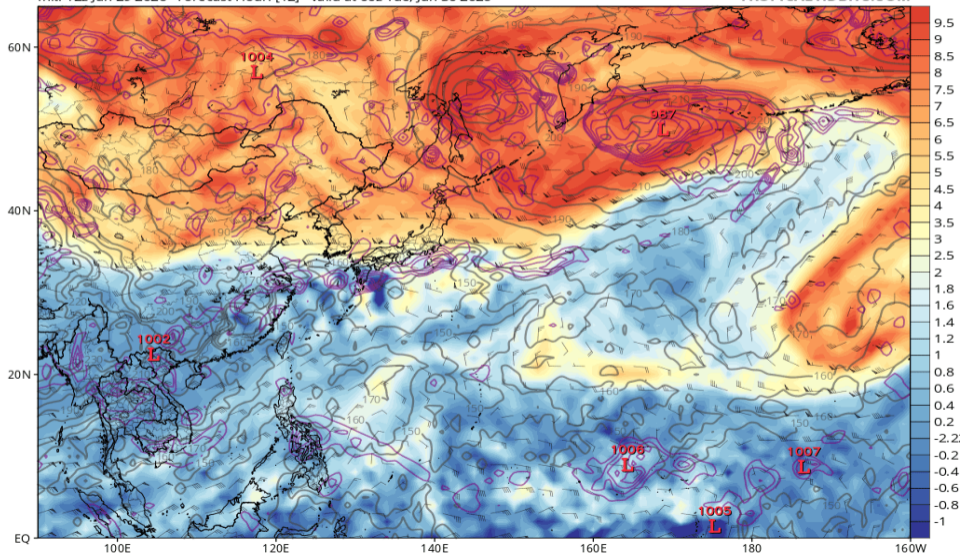


渦位 355K (GFS 06/30 00Z 予報)

GFS 355K Cyclonic PV (PVU), Wind (kt), Pressure (hPa, gray), & 850 hPa Cyclonic Vorticity (purple) [1.0°x1.0° grid]

Init: 12z Jun 29 2026 Forecast Hour: [12] valid at 00z Tue, Jun 30 2026

TROPICALTIDBITS.COM

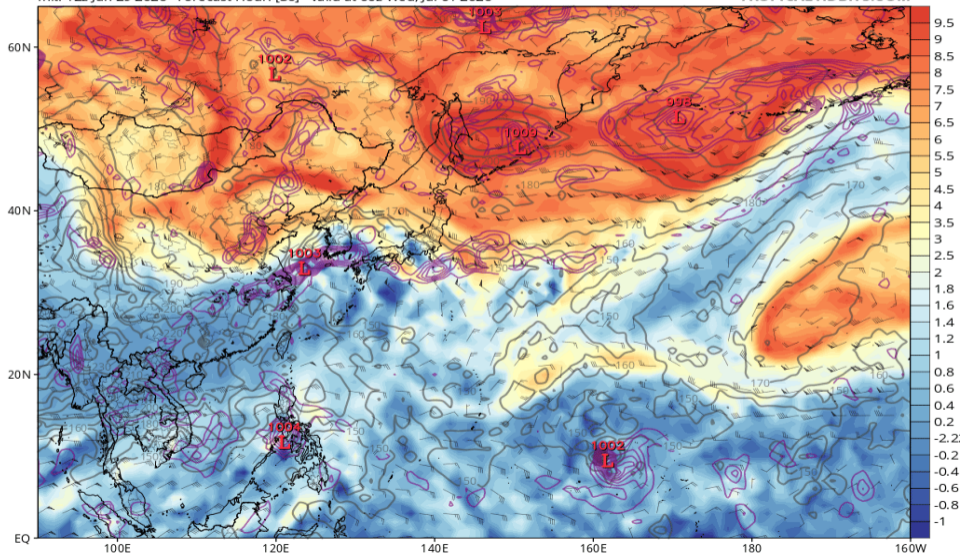


渦位 355K (GFS 07/01 00Z 予報)

GFS 355K Cyclonic PV (PVU), Wind (kt), Pressure (hPa, gray), & 850 hPa Cyclonic Vorticity (purple) [1.0°x1.0° grid]

Init: 12z Jun 29 2026 Forecast Hour: [36] valid at 00z Wed, Jul 01 2026

TROPICALTIDBITS.COM

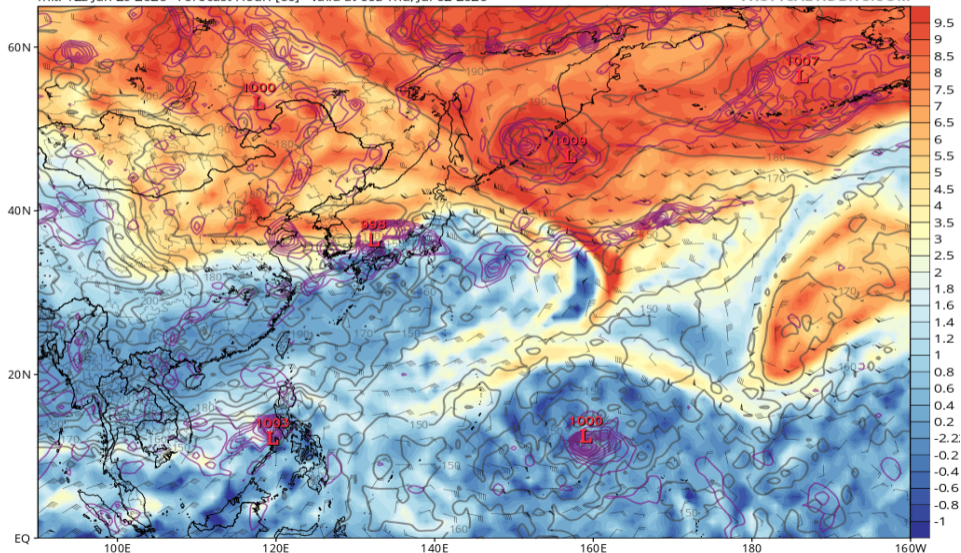


渦位 355K (GFS 07/02 00Z 予報)

GFS 355K Cyclonic PV (PVU), Wind (kt), Pressure (hPa, gray), & 850 hPa Cyclonic Vorticity (purple) [1.0°x1.0° grid]

Init: 12z Jun 29 2026 Forecast Hour: [60] valid at 00z Thu, Jul 02 2026

TROPICALTIDBITS.COM

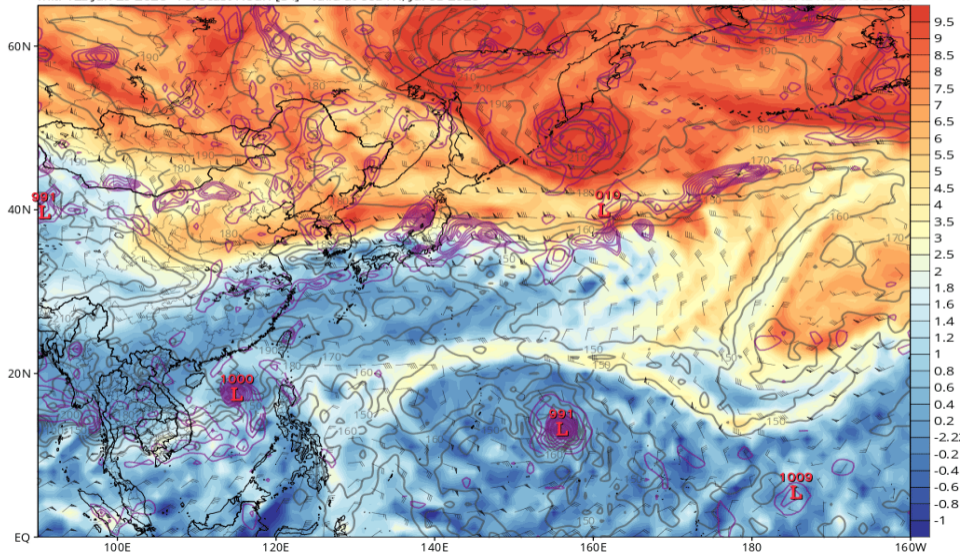


渦位 355K (GFS 07/03 00Z 予報)

GFS 355K Cyclonic PV (PVU), Wind (kt), Pressure (hPa, gray), & 850 hPa Cyclonic Vorticity (purple) [1.0°x1.0° grid]

Init: 12z Jun 29 2026 Forecast Hour: [84] valid at 00z Fri, Jul 03 2026

TROPICALTIDBITS.COM

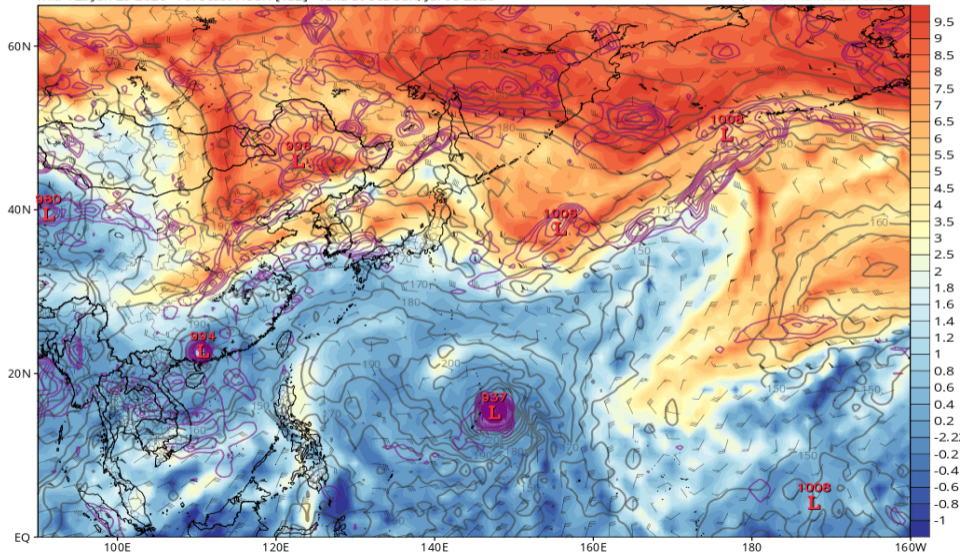


渦位 355K (GFS 07/05 00Z 予報)

GFS 355K Cyclonic PV (PVU), Wind (kt), Pressure (hPa, gray), & 850 hPa Cyclonic Vorticity (purple) [1.0°x1.0° grid]

Init: 12z Jun 29 2026 Forecast Hour: [132] valid at 00z Sun, Jul 05 2026

TROPICALTIDBITS.COM



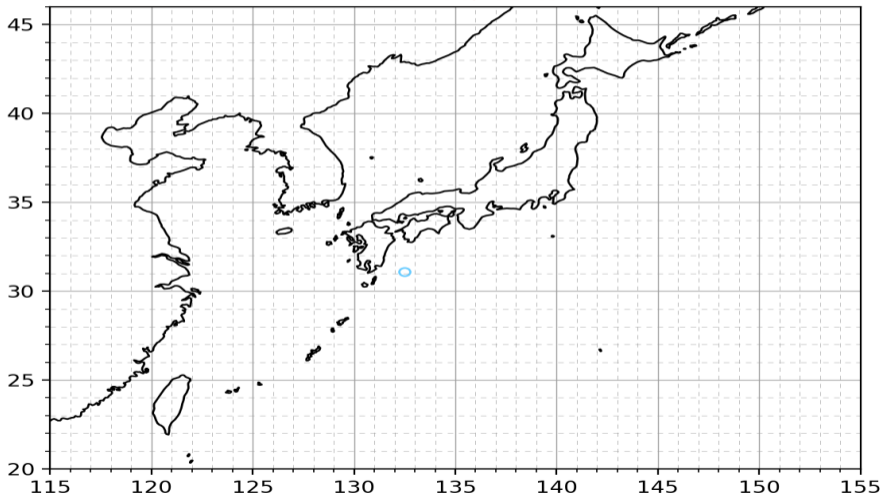
GrandEns (IFS/AIFS/GFS/AIGFS/GSM 06/30 00Z 予報)

Grand Ensemble

weather-models.info | ECMWF Open Data (CC BY 4.0),
NOAA data, 気象庁データ (ウェザーマップ社提供)

Init: 2026/06/29 18Z FT: 006h Valid: 2026/06/30 00Z

実際の進路予想は、気象庁の台風予報を利用してください



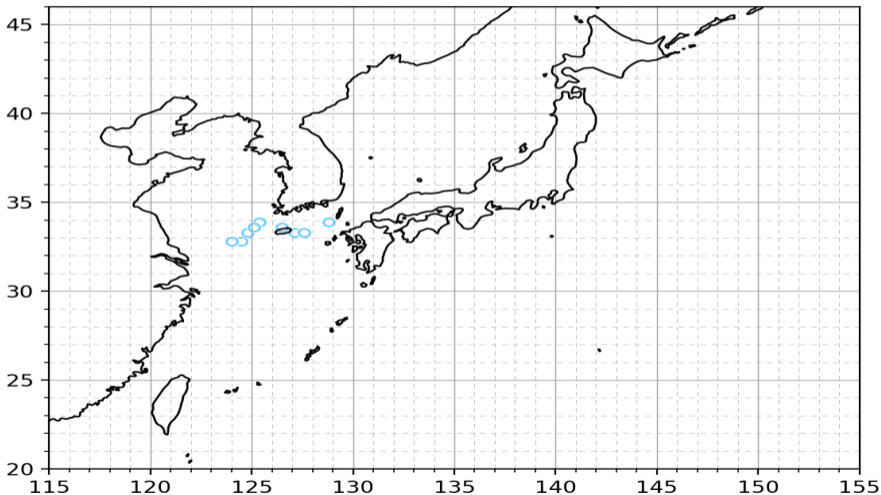
GrandEns (IFS/AIFS/GFS/AIGFS/GSM 07/01 00Z 予報)

Grand Ensemble

weather-models.info | ECMWF Open Data (CC BY 4.0),
NOAA data, 気象庁データ (ウェザーマップ社提供)

Init: 2026/06/29 18Z FT: 030h Valid: 2026/07/01 00Z

実際の進路予想は、気象庁の台風予報を利用してください



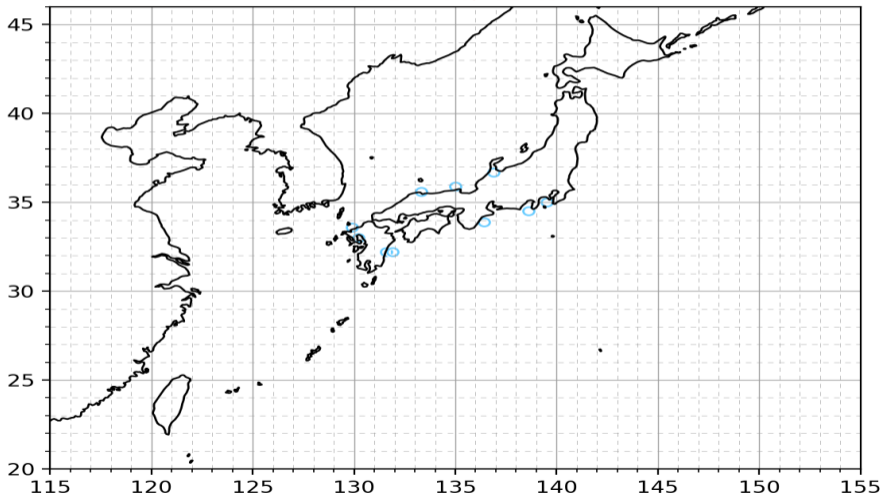
GrandEns (IFS/AIFS/GFS/AIGFS/GSM 07/02 00Z 予報)

Grand Ensemble

weather-models.info | ECMWF Open Data (CC BY 4.0),
NOAA data, 気象庁データ (ウェザーマップ社提供)

Init: 2026/06/29 18Z FT: 054h Valid: 2026/07/02 00Z

実際の進路予想は、気象庁の台風予報を利用してください



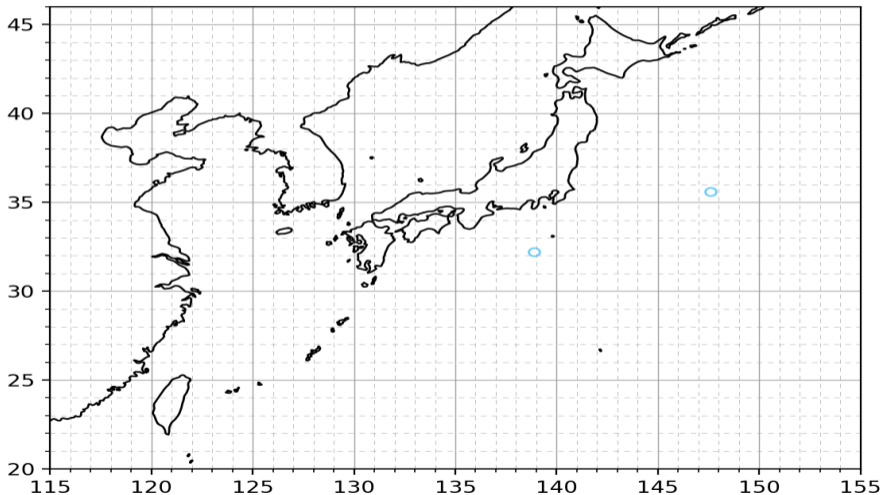
GrandEns (IFS/AIFS/GFS/AIGFS/GSM 07/03 00Z 予報)

Grand Ensemble

weather-models.info | ECMWF Open Data (CC BY 4.0),
NOAA data, 気象庁データ (ウェザーマップ社提供)

Init: 2026/06/29 18Z FT: 078h Valid: 2026/07/03 00Z

実際の進路予想は、気象庁の台風予報を利用してください



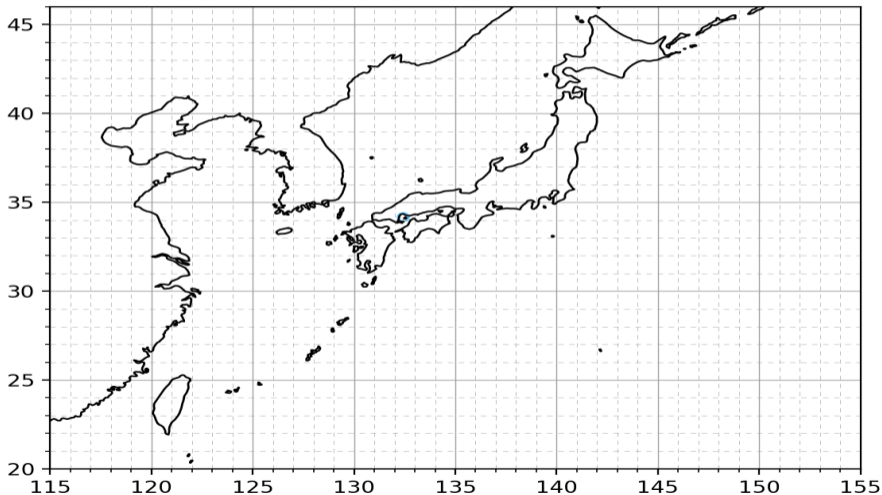
GrandEns (IFS/AIFS/GFS/AIGFS/GSM 07/04 00Z 予報)

Grand Ensemble

weather-models.info | ECMWF Open Data (CC BY 4.0),
NOAA data, 気象庁データ (ウェザーマップ社提供)

Init: 2026/06/29 18Z FT: 102h Valid: 2026/07/04 00Z

実際の進路予想は、気象庁の台風予報を利用してください



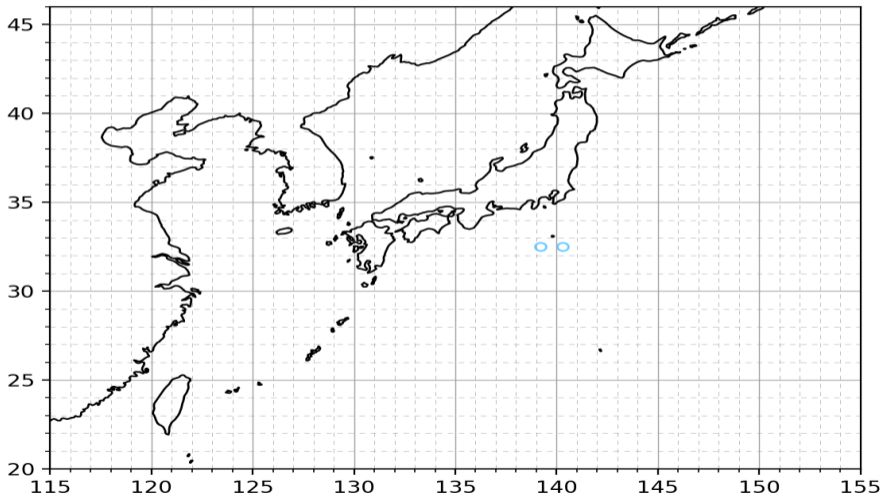
GrandEns (IFS/AIFS/GFS/AIGFS/GSM 07/05 00Z 予報)

Grand Ensemble

weather-models.info | ECMWF Open Data (CC BY 4.0),
NOAA data, 気象庁データ (ウェザーマップ社提供)

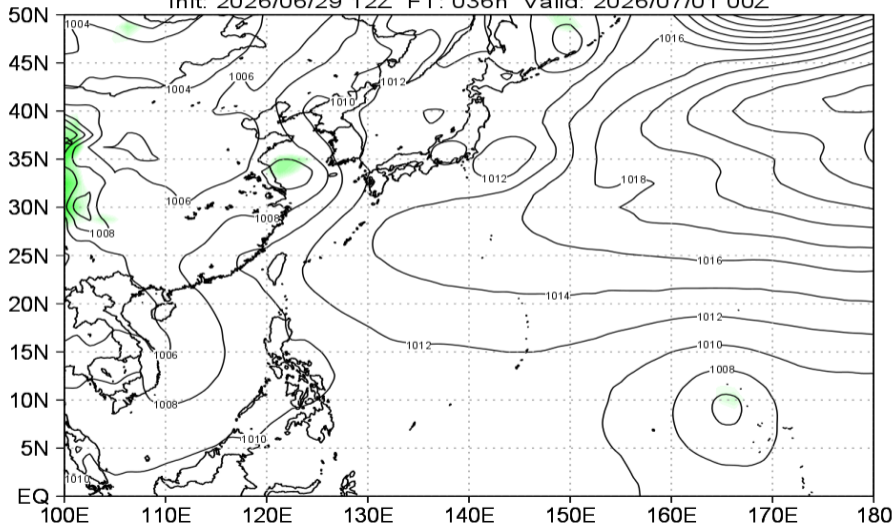
Init: 2026/06/29 18Z FT: 126h Valid: 2026/07/05 00Z

実際の進路予想は、気象庁の台風予報を利用してください

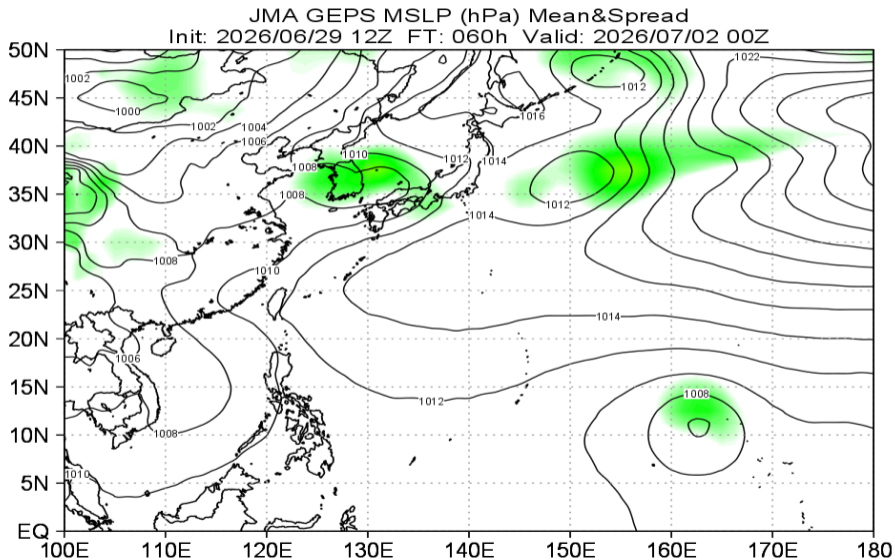


地上気圧 (GSMens 07/01 00Z 予報)

JMA GEPS MSLP (hPa) Mean&Spread
Init: 2026/06/29 12Z FT: 036h Valid: 2026/07/01 00Z

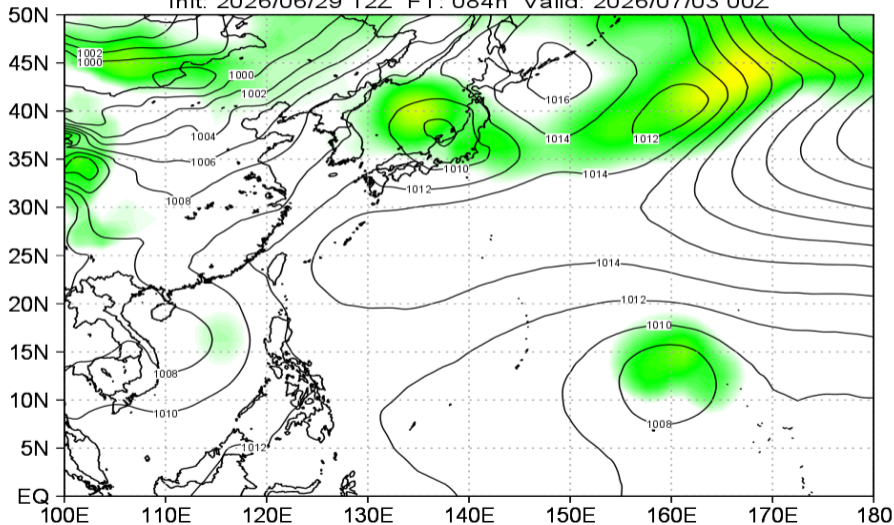


地上気圧 (GSMens 07/02 00Z 予報)



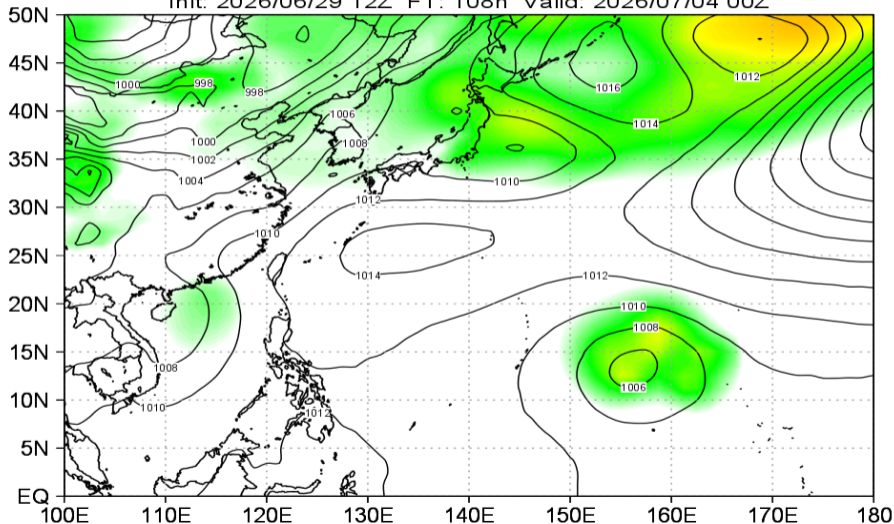
地上気圧 (GSMens 07/03 00Z 予報)

JMA GEPS MSLP (hPa) Mean&Spread
Init: 2026/06/29 12Z FT: 084h Valid: 2026/07/03 00Z



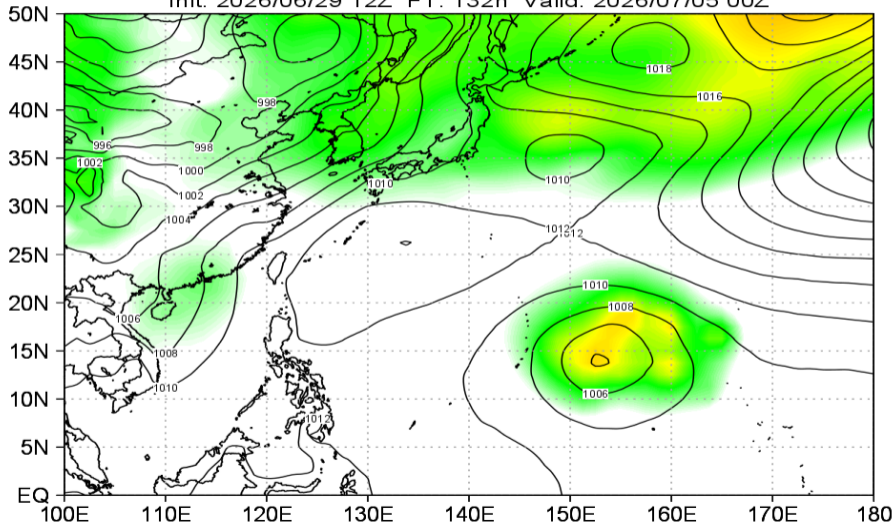
地上気圧 (GSMens 07/04 00Z 予報)

JMA GEPS MSLP (hPa) Mean&Spread
Init: 2026/06/29 12Z FT: 108h Valid: 2026/07/04 00Z



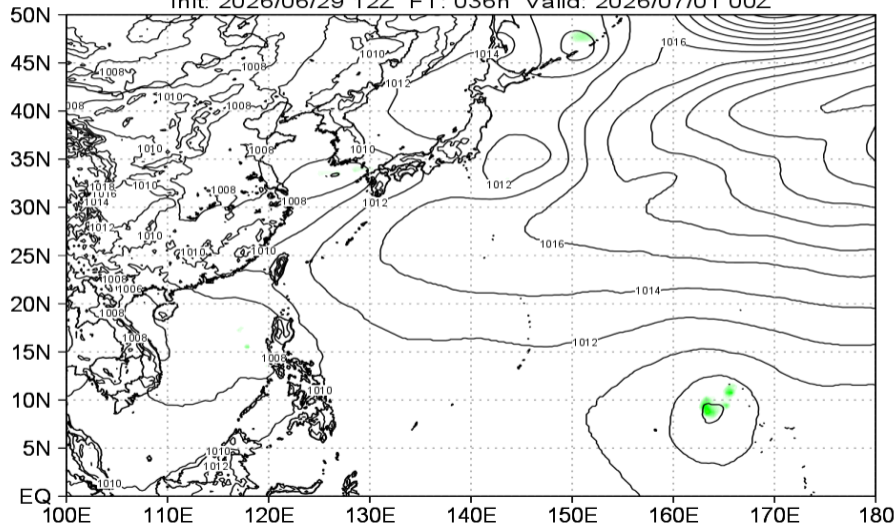
地上気圧 (GSMens 07/05 00Z 予報)

JMA GEPS MSLP (hPa) Mean&Spread
Init: 2026/06/29 12Z FT: 132h Valid: 2026/07/05 00Z



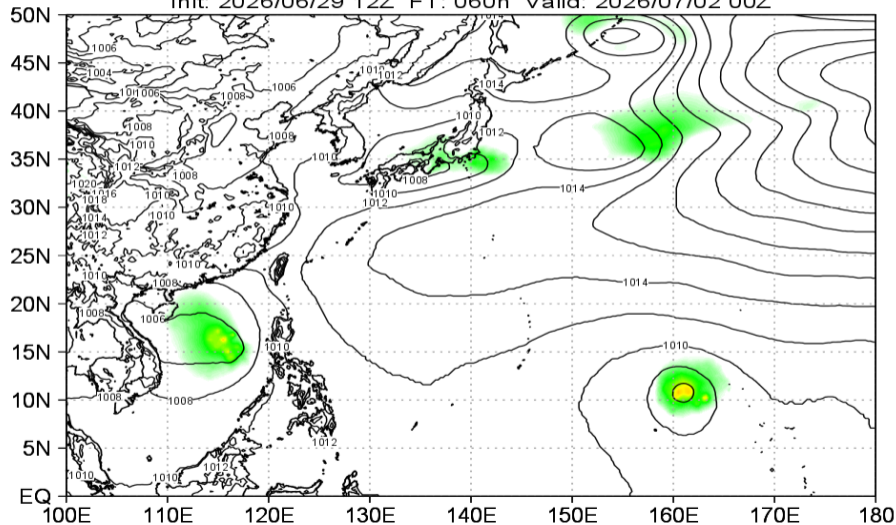
地上気圧 (IFSens 07/01 00Z 予報)

ECMWF IFS ENS MSLP (hPa) Mean&Spread
Init: 2026/06/29 12Z FT: 036h Valid: 2026/07/01 00Z



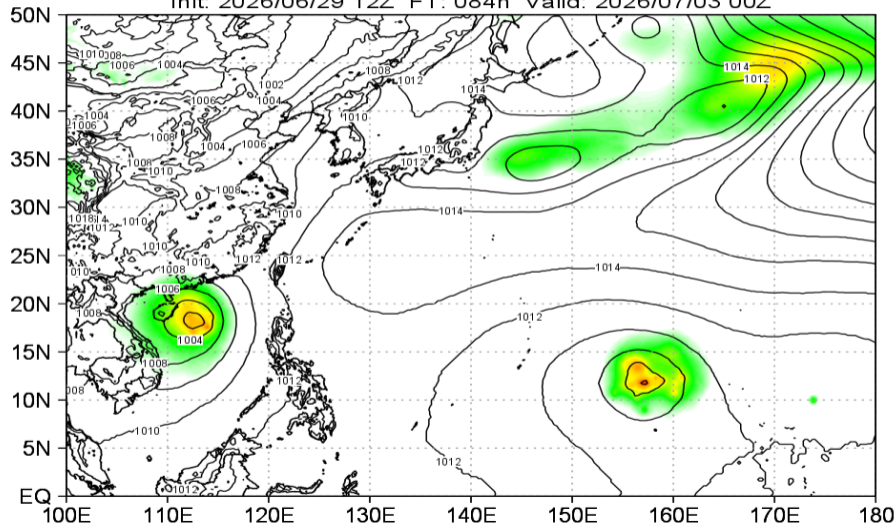
地上気圧 (IFSens 07/02 00Z 予報)

ECMWF IFS ENS MSLP (hPa) Mean&Spread
Init: 2026/06/29 12Z FT: 060h Valid: 2026/07/02 00Z



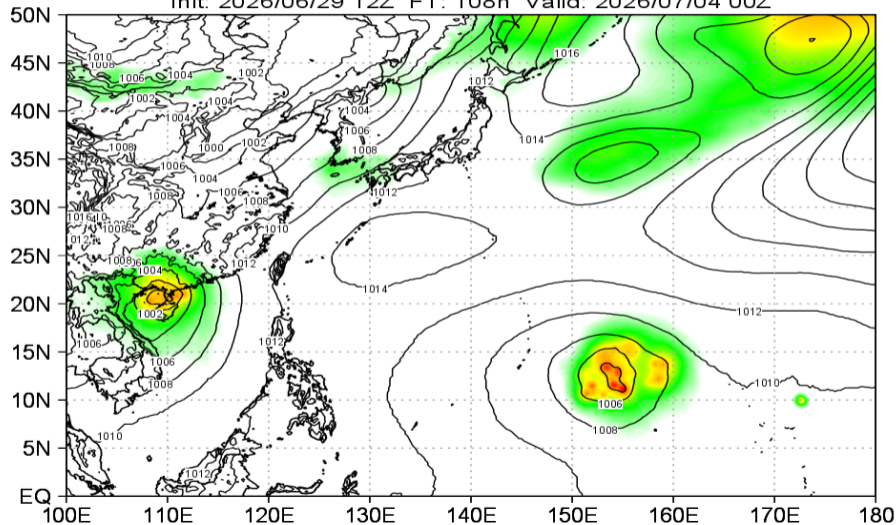
地上気圧 (IFSens 07/03 00Z 予報)

ECMWF IFS ENS MSLP (hPa) Mean&Spread
Init: 2026/06/29 12Z FT: 084h Valid: 2026/07/03 00Z



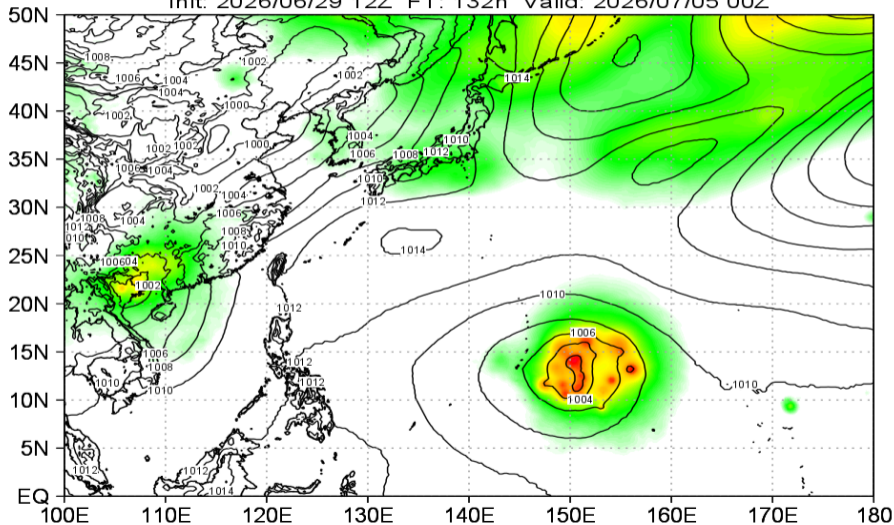
地上気圧 (IFSens 07/04 00Z 予報)

ECMWF IFS ENS MSLP (hPa) Mean&Spread
Init: 2026/06/29 12Z FT: 108h Valid: 2026/07/04 00Z



地上気圧 (IFSens 07/05 00Z 予報)

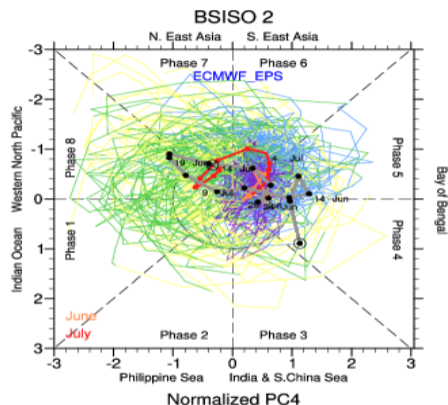
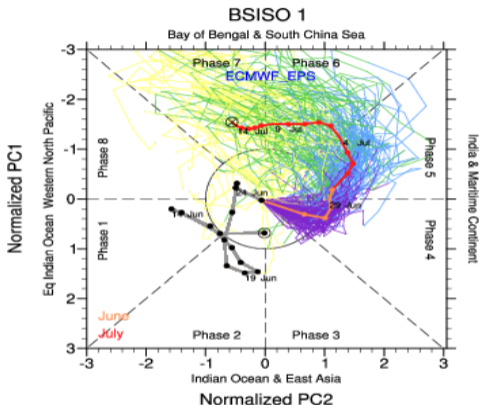
ECMWF IFS ENS MSLP (hPa) Mean&Spread
Init: 2026/06/29 12Z FT: 132h Valid: 2026/07/05 00Z



No Figure

BSISO 予測 (ECMWFens 06/26 初期)

BSISO Forecast for 26-June-2026 to 15-July-2026



Reanalysis

0-4d

5-9d

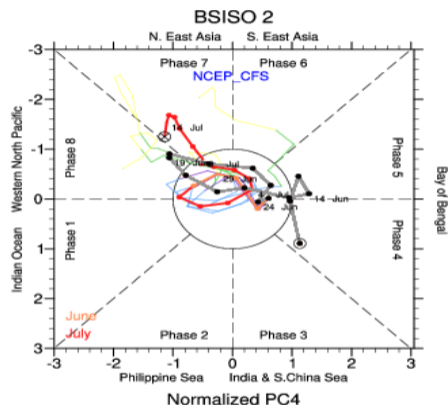
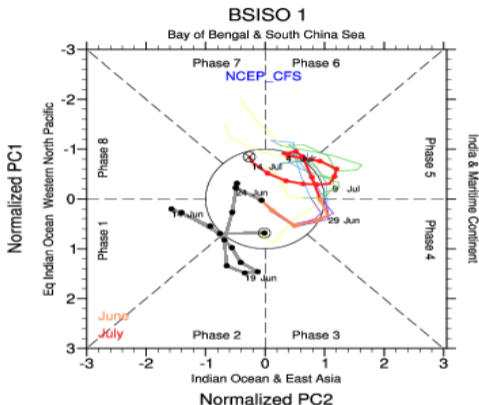
Ensemble Mean

10-14d

15-19d

BSISO 予測 (NCEPCFSens 06/26 初期)

BSISO Forecast for 26-June-2026 to 15-July-2026



Reanalysis

Ensemble Mean

0-4d

5-9d

10-14d

15-19d