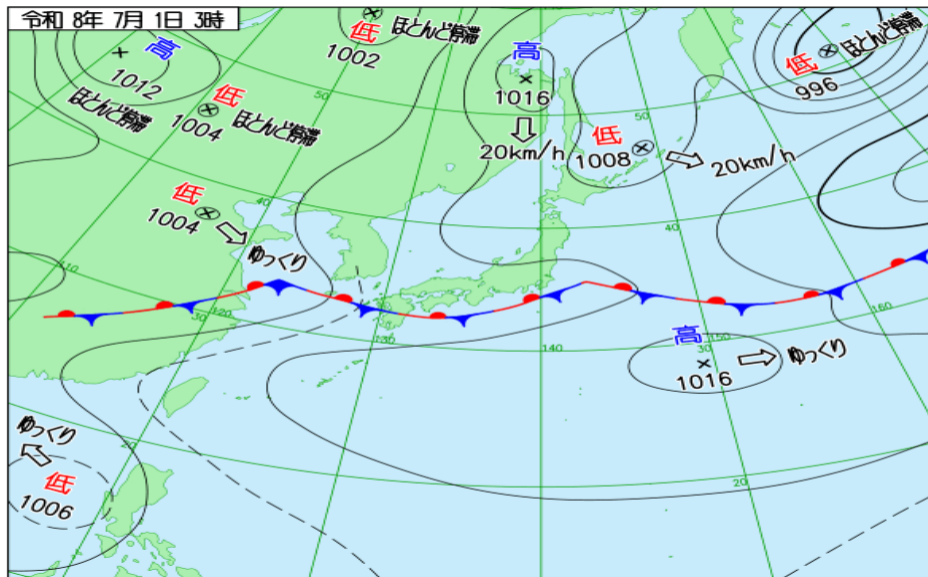
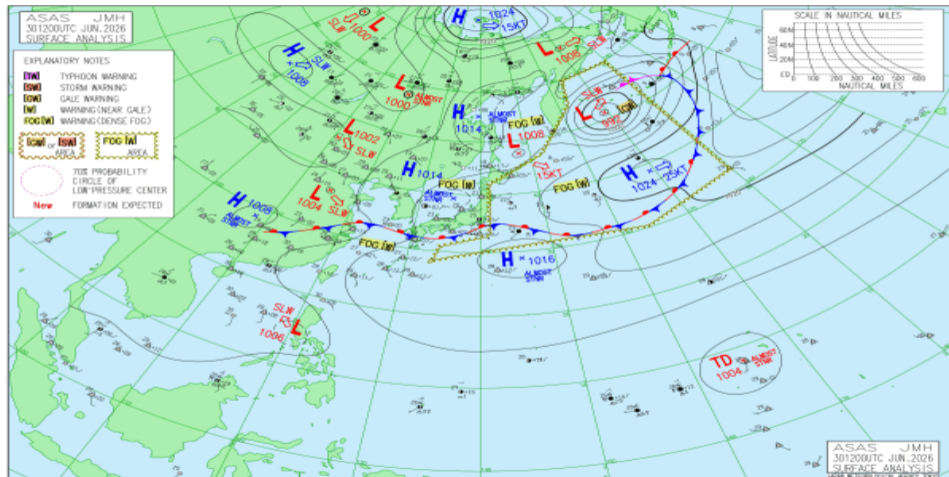


# JMA 日本域実況天気図 06/30 18Z

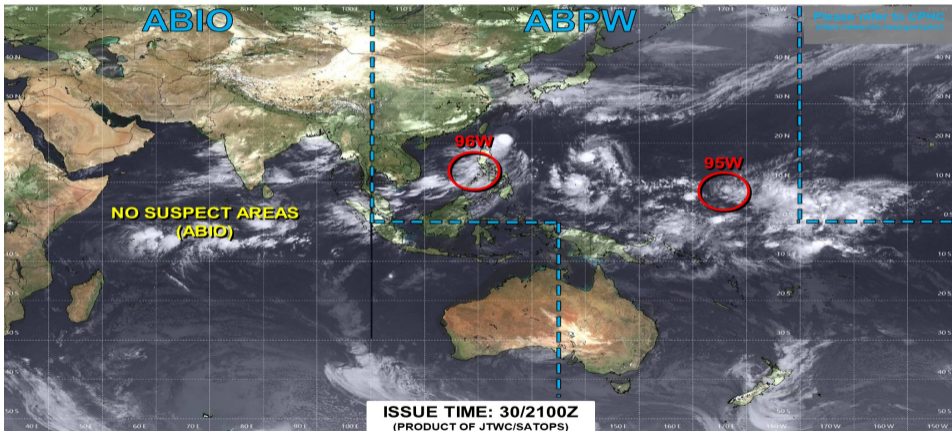


# JMA アジア太平洋域実況天気図 06/30 12Z





## JOINT TYPHOON WARNING CENTER



**LOW** TC development unlikely within 24 hours

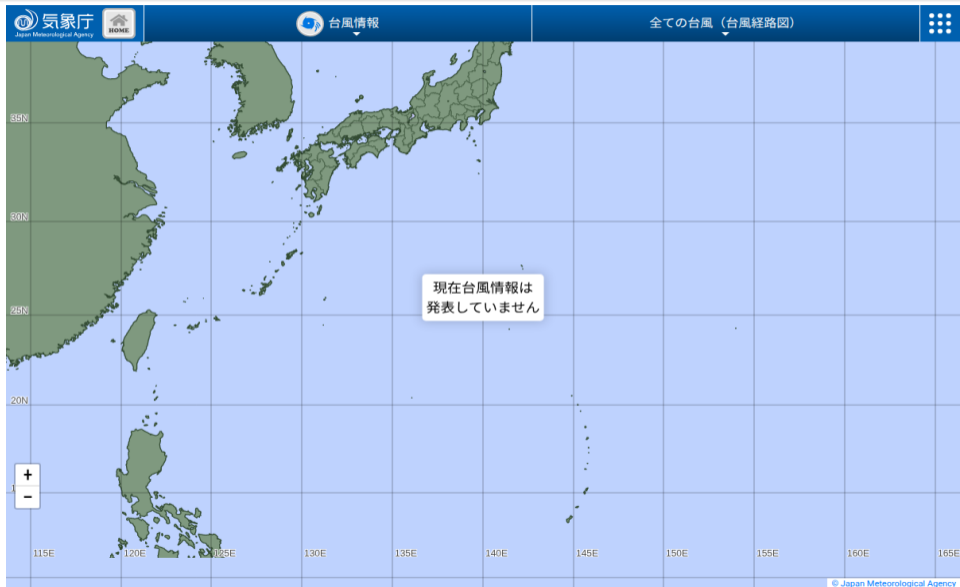
**MEDIUM** TC development likely, but expected to occur beyond 24 hours

**HIGH** TC development likely within 24 hours (Reference TCFA)

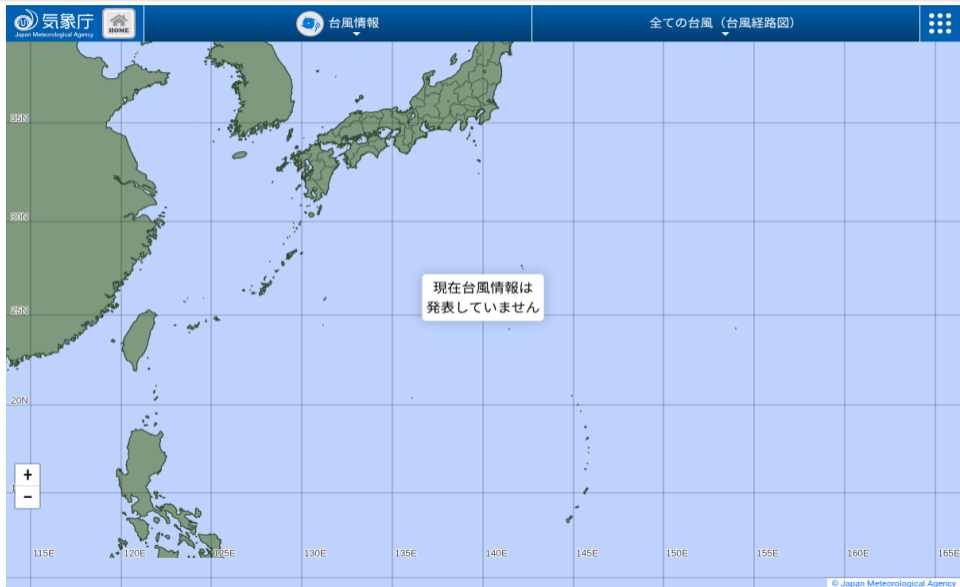
**SUB TROPICAL** Monitoring for potential transition to TC. Invest label color denotes tropical transition probability



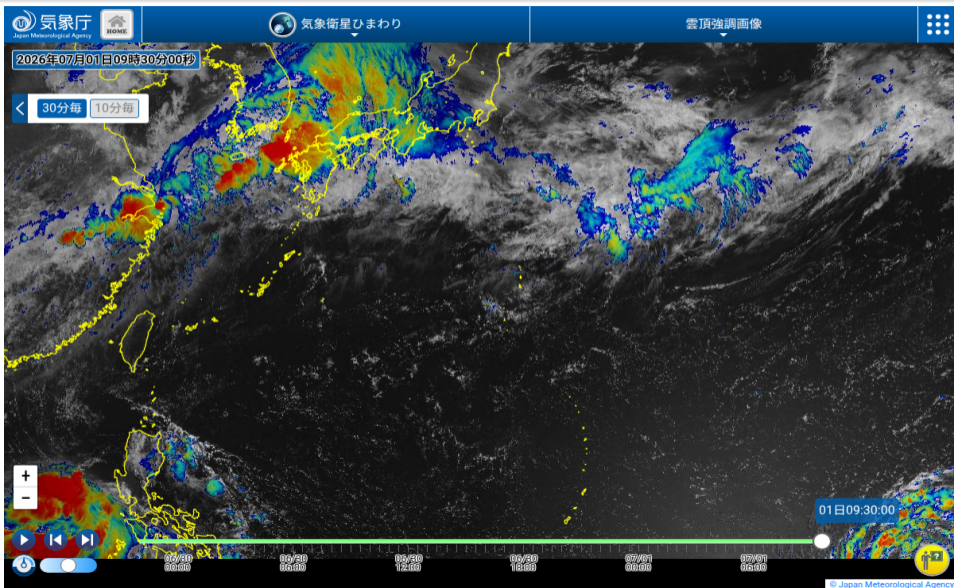
# JMA 台風実況



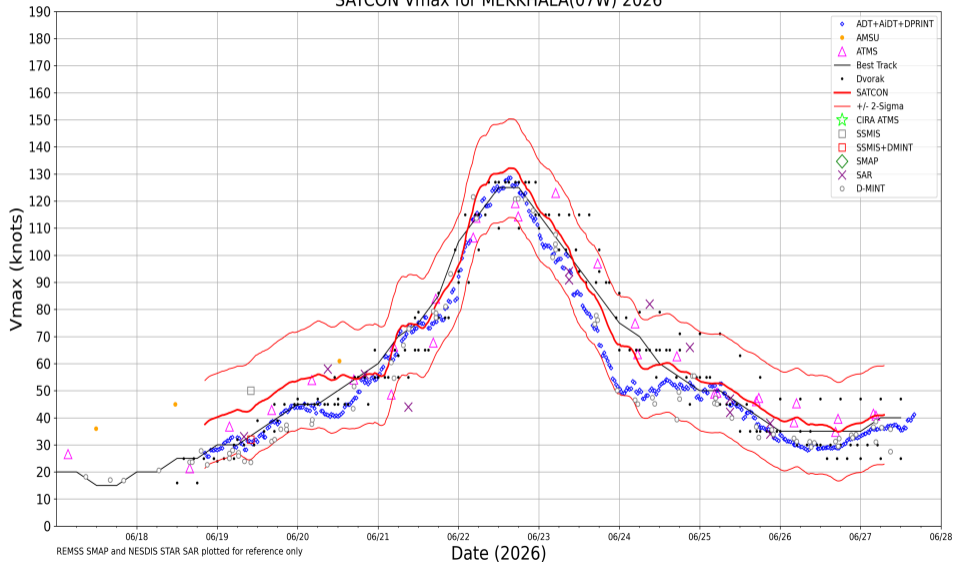
# JMA 台風実況



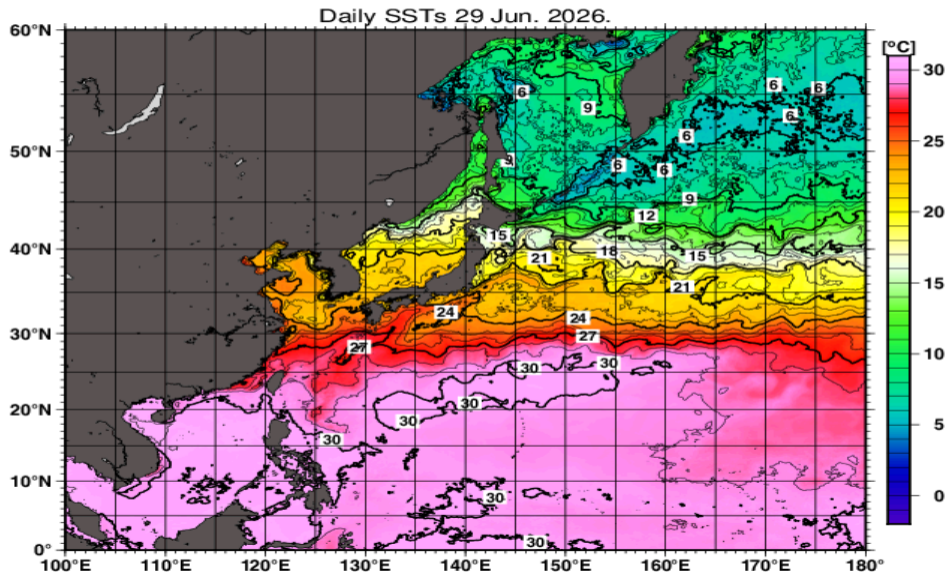
# ひまわり雲頂強調



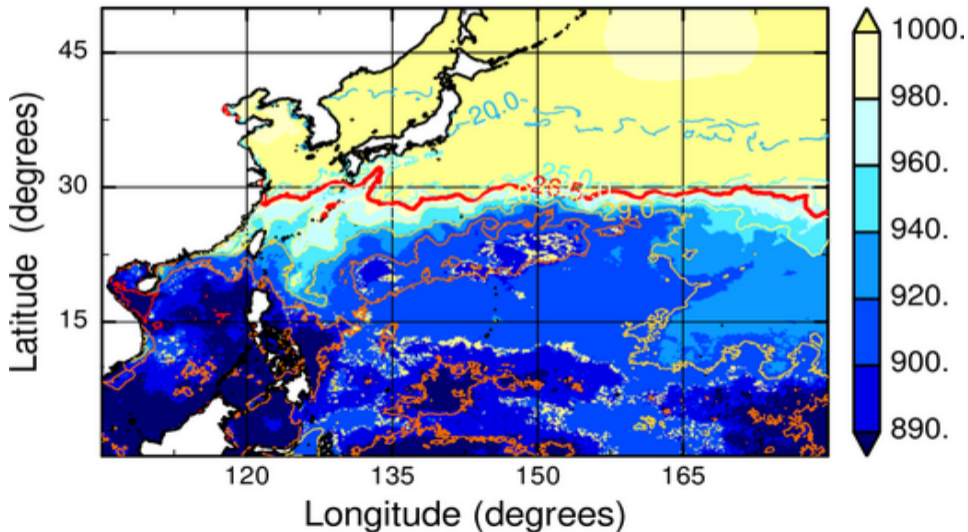
## SATCON Vmax for MEKKHALA(07W) 2026



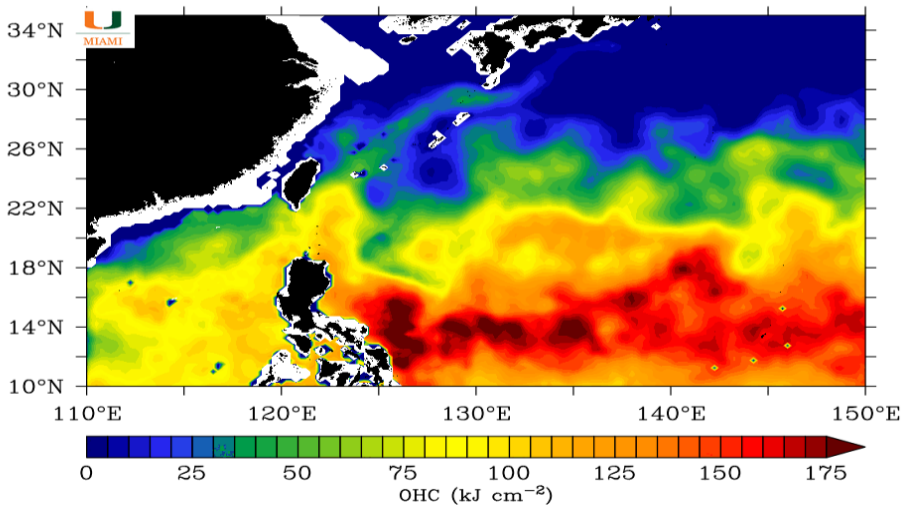
# JMA 海面水温解析



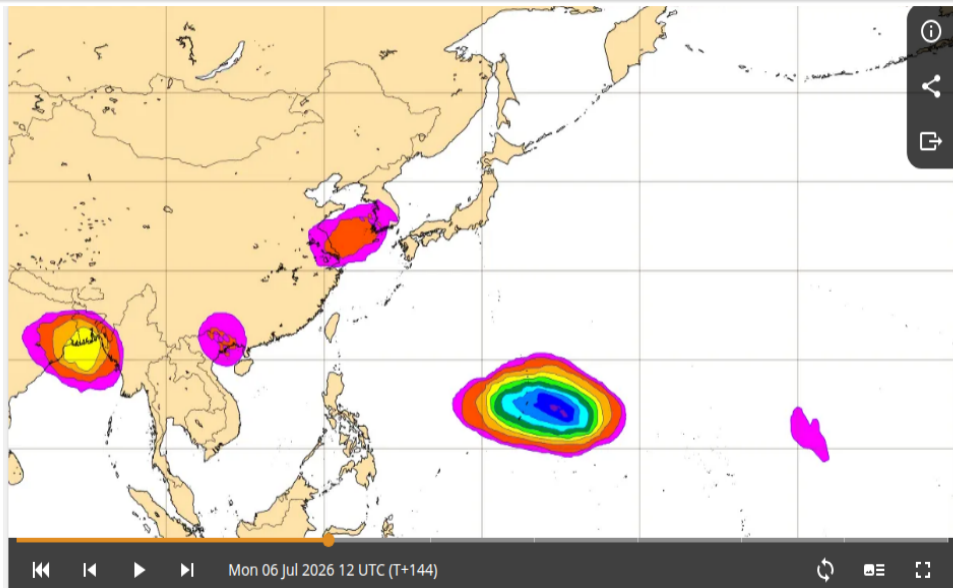
MPI<sub>BE</sub>, JMAGSM+HIMSST (mb) (00:00:00Z29Jun2026)



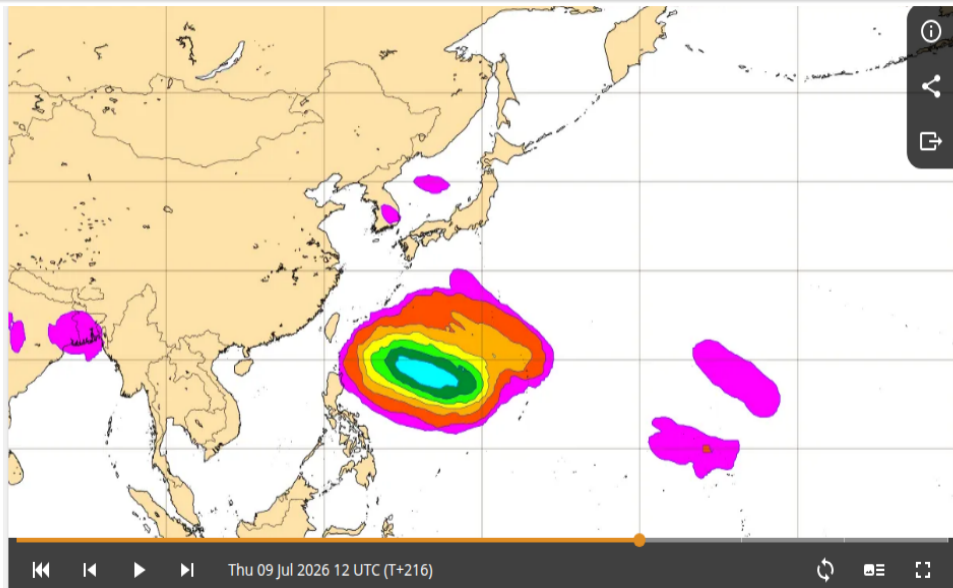
Ocean Heat Content: 06/30/2026



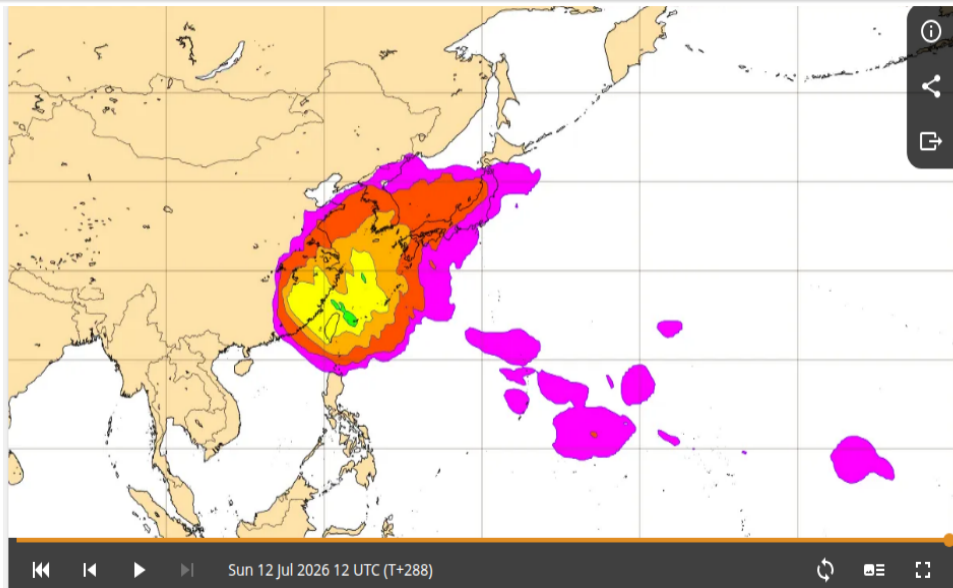
# ECMWF TC genesis 07/06 12Z (6 日先) 予報



# ECMWF TC genesis 07/09 12Z (9 日先) 予報



# ECMWF TC genesis 07/12 12Z (12 日先) 予報



No Figure

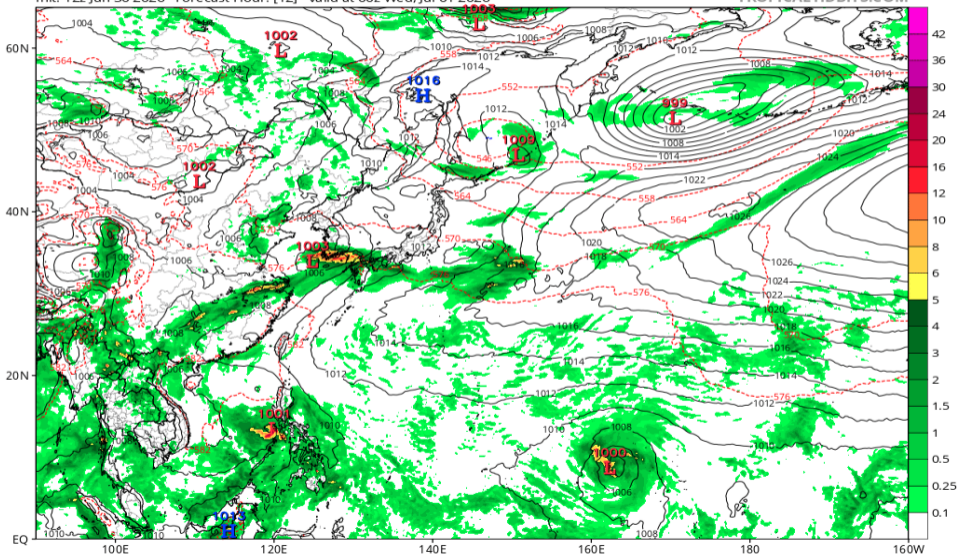
No Figure

# 地上気圧配置 (GFS 07/01 00Z 予報)

GFS 6-hour Averaged Precip Rate (mm/hr), MSLP (hPa) & 1000-500mb Thickness (dam)

Init: 12z Jun 30 2026 Forecast Hour: [12] valid at 00z Wed, Jul 01 2026

TROPICALTIDBITS.COM

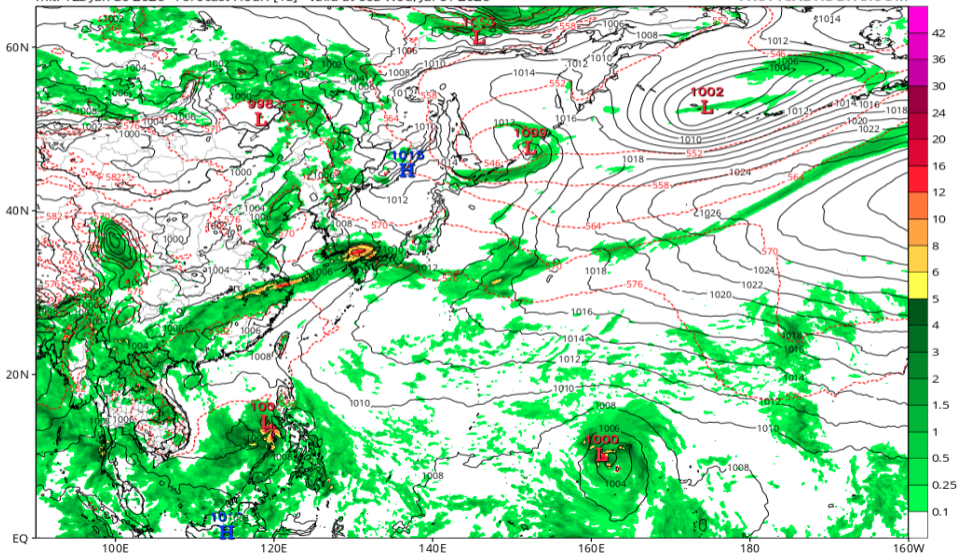


# 地上気圧配置 (GFS 07/01 06Z 予報)

GFS 6-hour Averaged Precip Rate (mm/hr), MSLP (hPa) & 1000-500mb Thickness (dam)

Init: 12z Jun 30 2026 Forecast Hour: [18] valid at 06z Wed, Jul 01 2026

TROPICALTIDBITS.COM

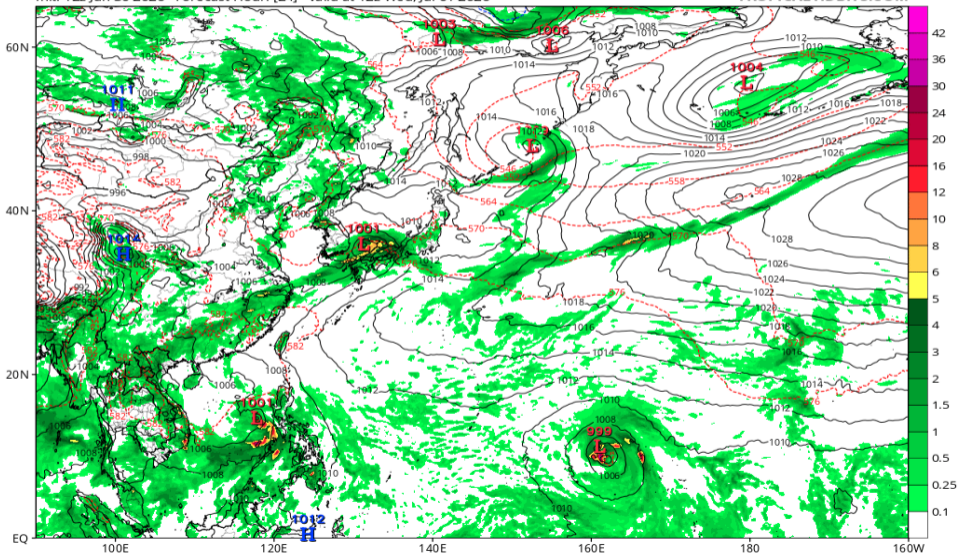


# 地上気圧配置 (GFS 07/01 12Z 予報)

GFS 6-hour Averaged Precip Rate (mm/hr), MSLP (hPa) & 1000-500mb Thickness (dam)

Init: 12z Jun 30 2026 Forecast Hour: [24] valid at 12z Wed, Jul 01 2026

TROPICALTIDBITS.COM

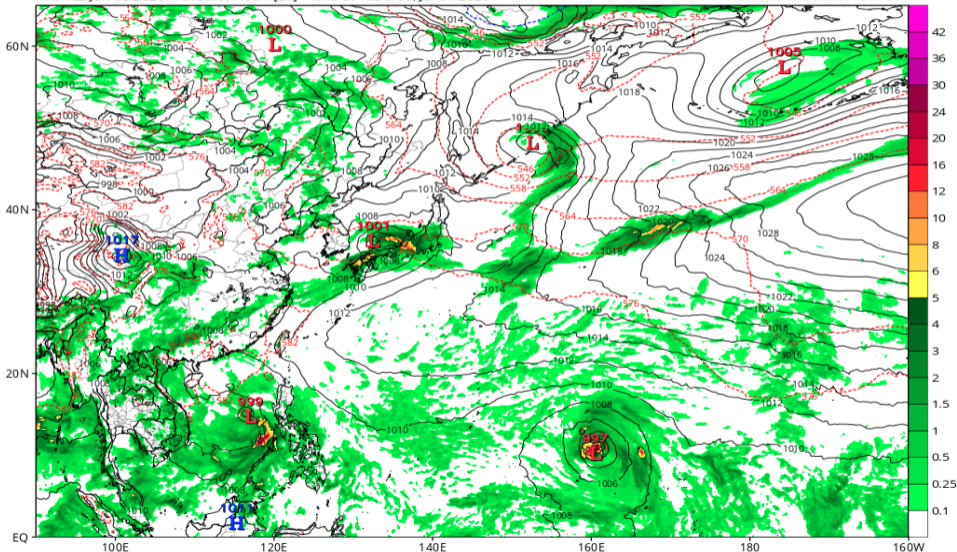


# 地上気圧配置 (GFS 07/01 18Z 予報)

GFS 6-hour Averaged Precip Rate (mm/hr), MSLP (hPa) & 1000-500mb Thickness (dam)

Init: 12z Jun 30 2026 Forecast Hour: [30] valid at 18z Wed, Jul 01 2026

TROPICALTIDBITS.COM

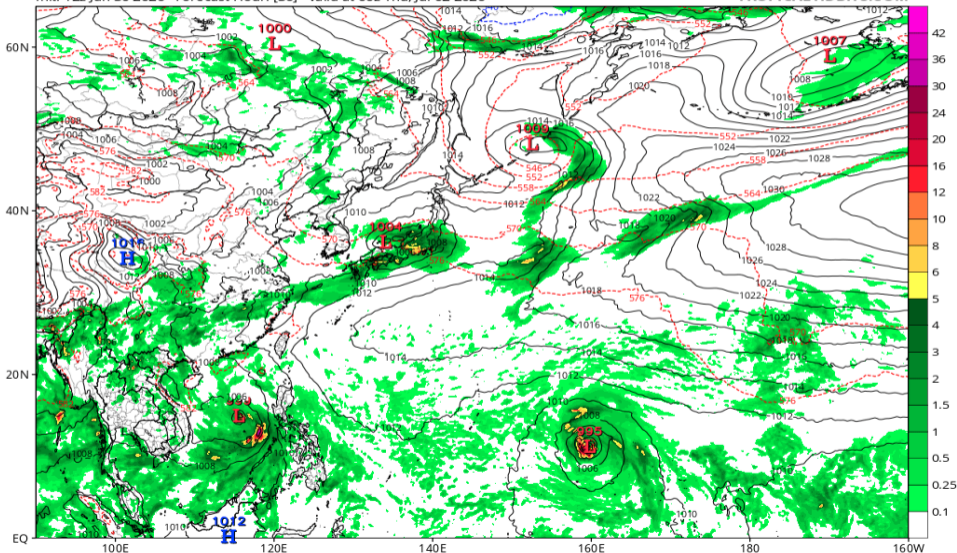


# 地上気圧配置 (GFS 07/02 00Z 予報)

GFS 6-hour Averaged Precip Rate (mm/hr), MSLP (hPa) & 1000-500mb Thickness (dam)

Init: 12z Jun 30 2026 Forecast Hour: [36] valid at 00z Thu, Jul 02 2026

TROPICALTIDBITS.COM

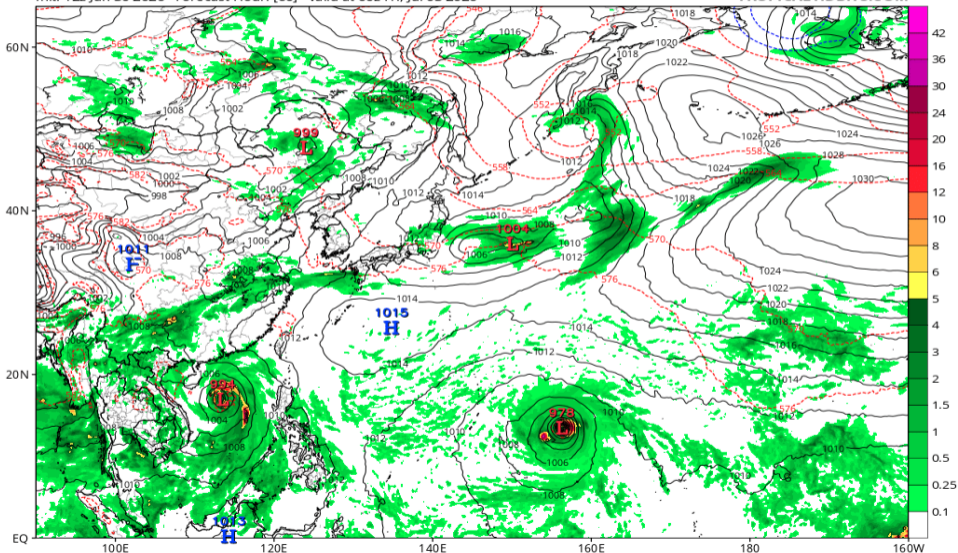


# 地上気圧配置 (GFS 07/03 00Z 予報)

GFS 6-hour Averaged Precip Rate (mm/hr), MSLP (hPa) & 1000-500mb Thickness (dam)

Init: 12z Jun 30 2026 Forecast Hour: [60] valid at 00z Fri, Jul 03 2026

TROPICALTIDBITS.COM

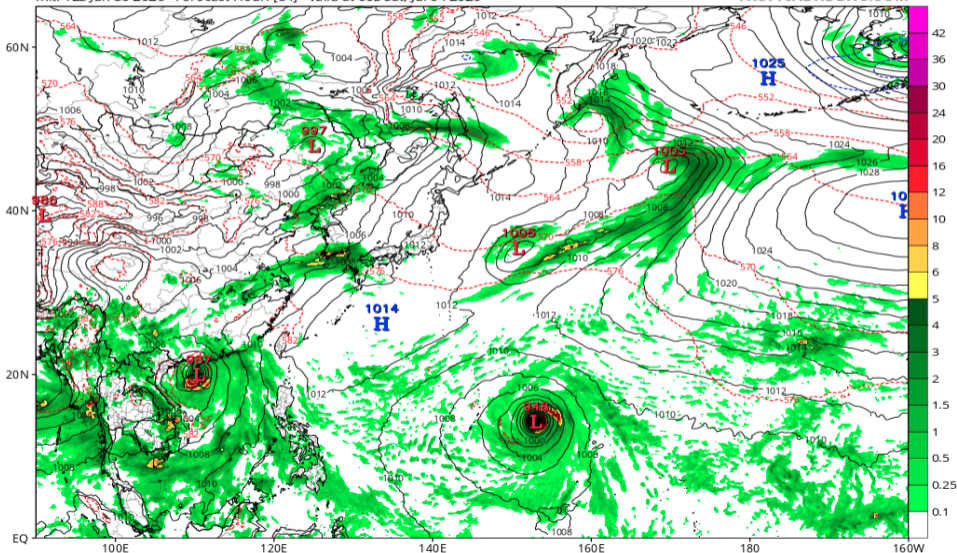


# 地上気圧配置 (GFS 07/04 00Z 予報)

GFS 6-hour Averaged Precip Rate (mm/hr), MSLP (hPa) & 1000-500mb Thickness (dam)

Init: 12z Jun 30 2026 Forecast Hour: [84] valid at 00z Sat, Jul 04 2026

TROPICALTIDBITS.COM

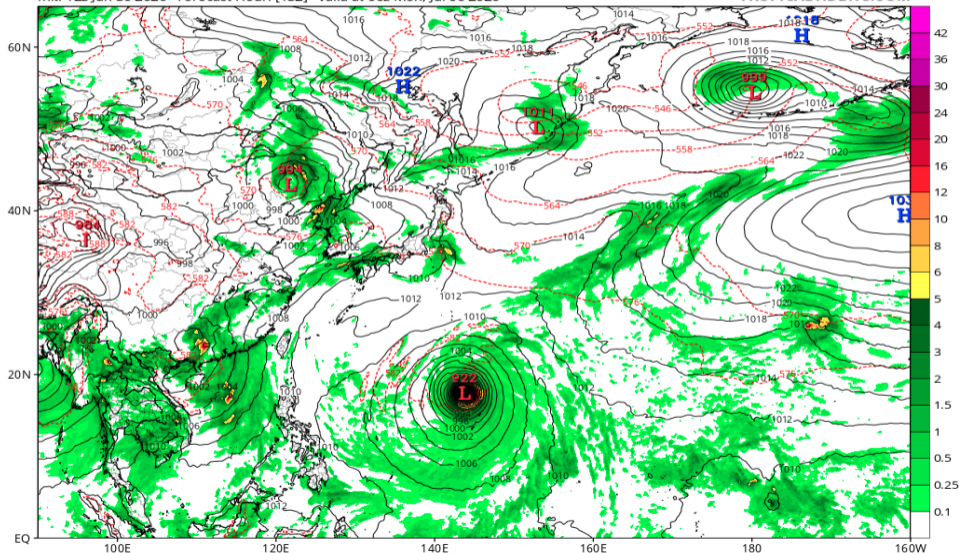


# 地上気圧配置 (GFS 07/06 00Z 予報)

GFS 6-hour Averaged Precip Rate (mm/hr), MSLP (hPa) & 1000-500mb Thickness (dam)

Init: 12z Jun 30 2026 Forecast Hour: [132] valid at 00z Mon, Jul 06 2026

TROPICALTIDBITS.COM

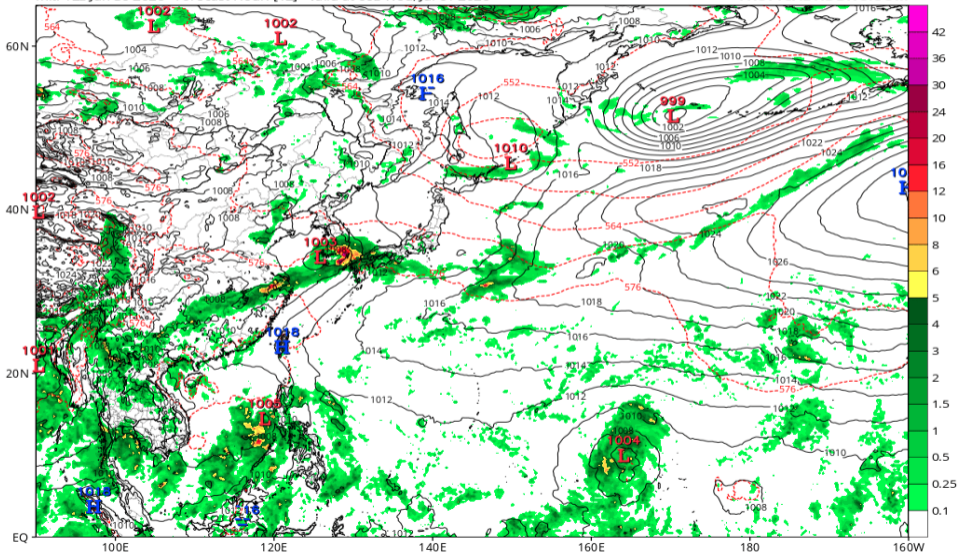


# 地上気圧配置 (ECMWF 07/01 00Z 予報)

ECMWF Instantaneous Precip Rate (mm/hr), MSLP (hPa) & 1000-500mb Thickness (dam)

Init: 12z Jun 30 2026 Forecast Hour: [12] valid at 00z Wed, Jul 01 2026

TROPICALTIDBITS.COM

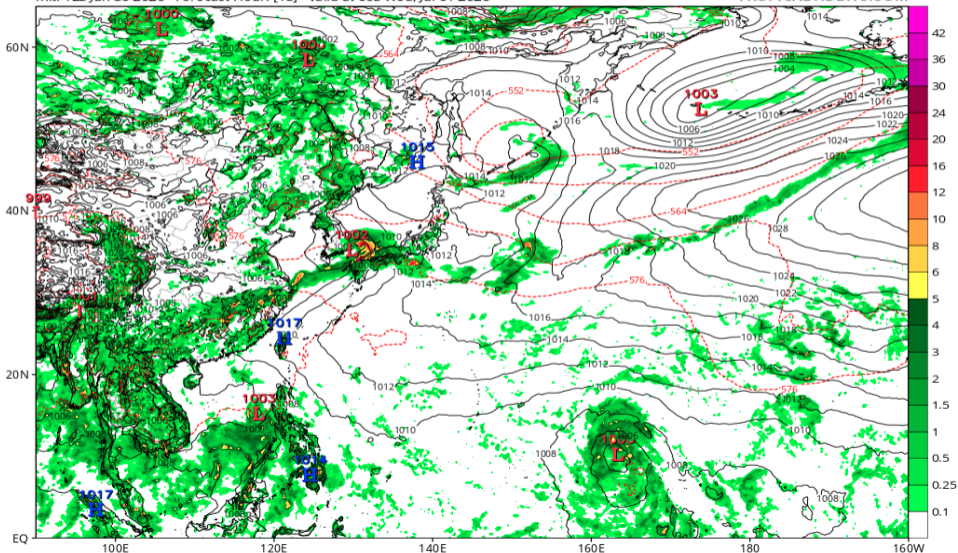


# 地上気圧配置 (ECMWF 07/01 06Z 予報)

ECMWF Instantaneous Precip Rate (mm/hr), MSLP (hPa) & 1000-500mb Thickness (dam)

Init: 12z Jun 30 2026 Forecast Hour: [18] valid at 06z Wed, Jul 01 2026

TROPICALTIDBITS.COM

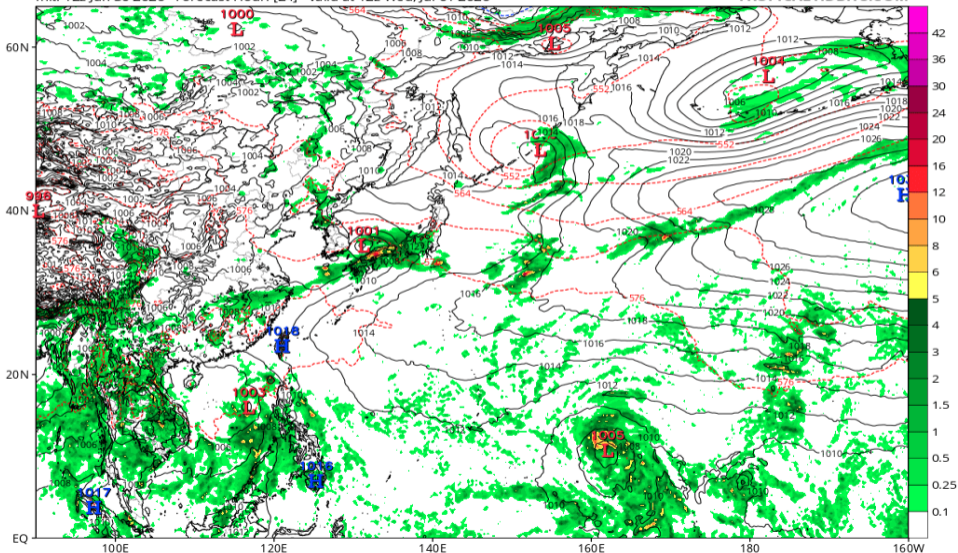


# 地上気圧配置 (ECMWF 07/01 12Z 予報)

ECMWF Instantaneous Precip Rate (mm/hr), MSLP (hPa) & 1000-500mb Thickness (dam)

Init: 12z Jun 30 2026 Forecast Hour: [24] valid at 12z Wed, Jul 01 2026

TROPICALTIDBITS.COM

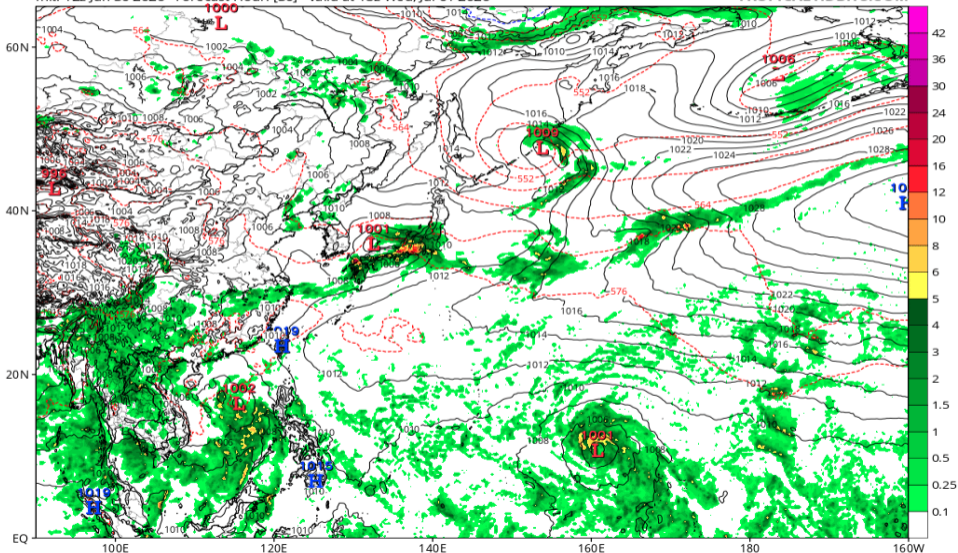


# 地上気圧配置 (ECMWF 07/01 18Z 予報)

ECMWF Instantaneous Precip Rate (mm/hr), MSLP (hPa) & 1000-500mb Thickness (dam)

Init: 12z Jun 30 2026 Forecast Hour: [30] valid at 18z Wed, Jul 01 2026

TROPICALTIDBITS.COM

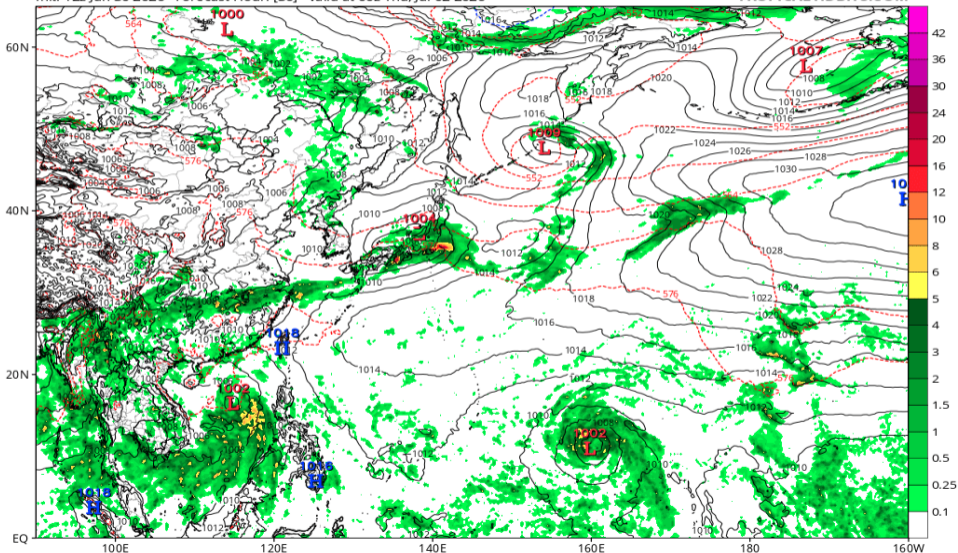


# 地上気圧配置 (ECMWF 07/02 00Z 予報)

ECMWF Instantaneous Precip Rate (mm/hr), MSLP (hPa) & 1000-500mb Thickness (dam)

Init: 12z Jun 30 2026 Forecast Hour: [36] valid at 00z Thu, Jul 02 2026

TROPICALTIDBITS.COM

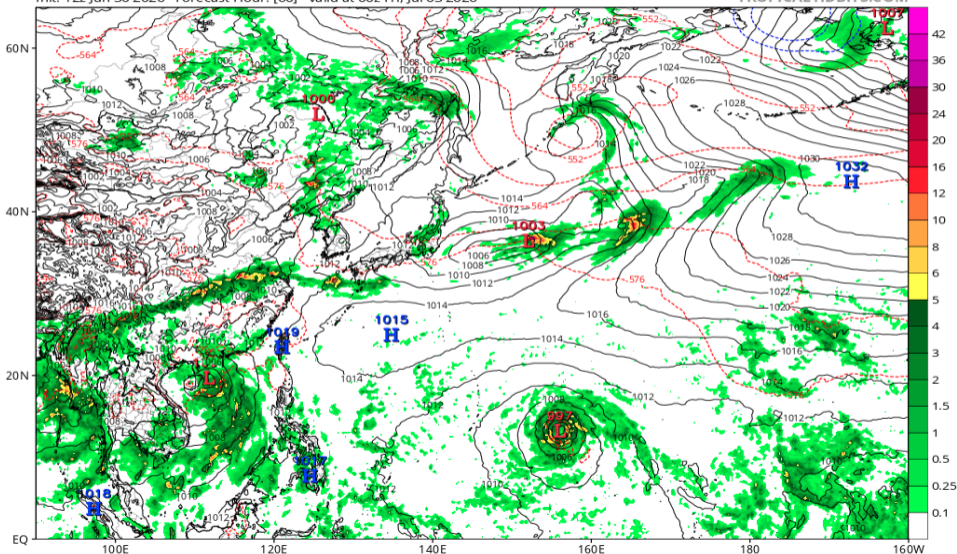


# 地上気圧配置 (ECMWF 07/03 00Z 予報)

ECMWF Instantaneous Precip Rate (mm/hr), MSLP (hPa) & 1000-500mb Thickness (dam)

Init: 12z Jun 30 2026 Forecast Hour: [60] valid at 00z Fri, Jul 03 2026

TROPICALTIDBITS.COM

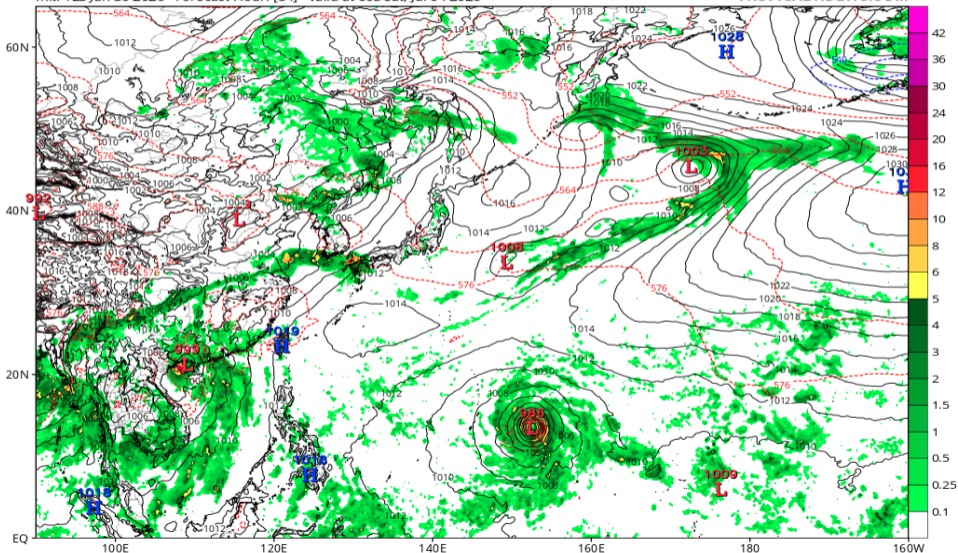


# 地上気圧配置 (ECMWF 07/04 00Z 予報)

ECMWF Instantaneous Precip Rate (mm/hr), MSLP (hPa) & 1000-500mb Thickness (dam)

Init: 12z Jun 30 2026 Forecast Hour: [84] valid at 00z Sat, Jul 04 2026

TROPICALTIDBITS.COM

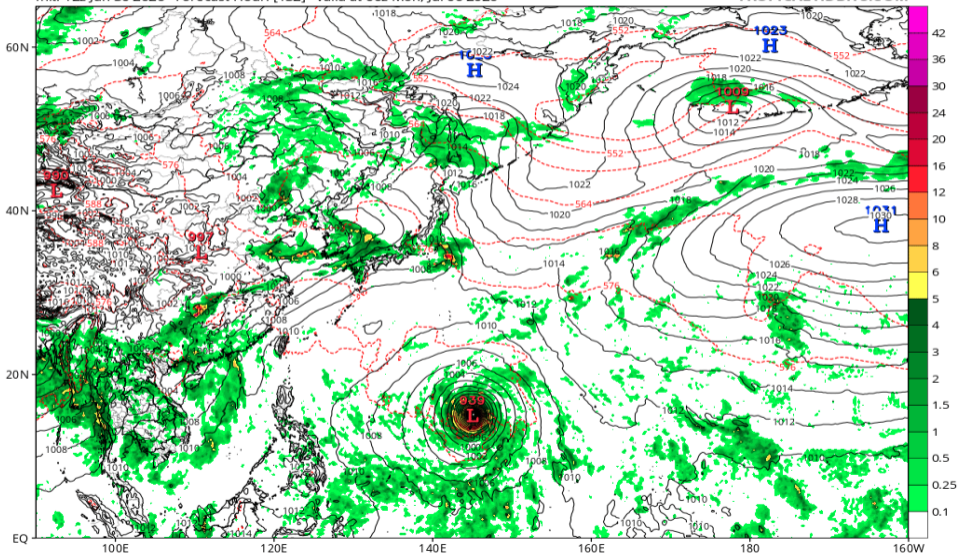


# 地上気圧配置 (ECMWF 07/06 00Z 予報)

ECMWF Instantaneous Precip Rate (mm/hr), MSLP (hPa) & 1000-500mb Thickness (dam)

Init: 12z Jun 30 2026 Forecast Hour: [132] valid at 00z Mon, Jul 06 2026

TROPICALTIDBITS.COM

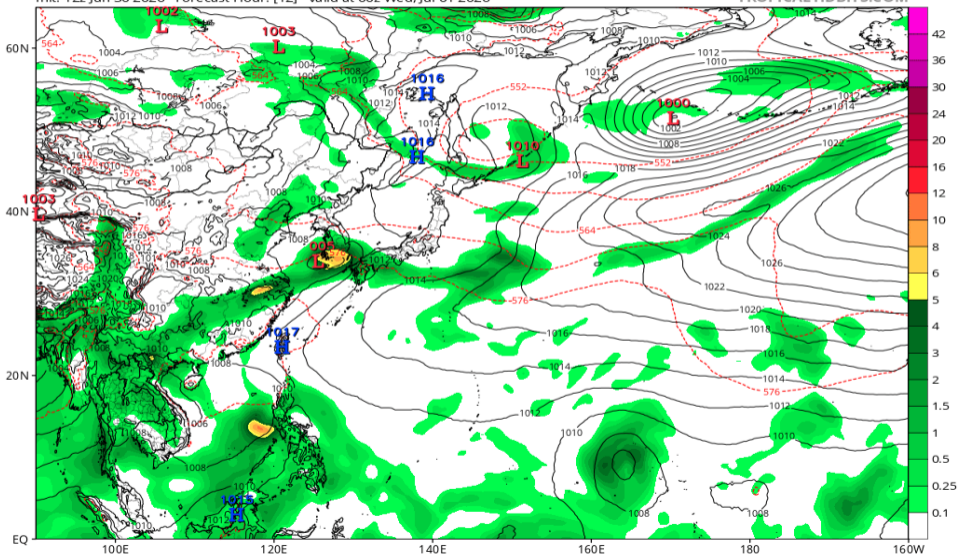


# 地上気圧配置 (AIFS 07/01 00Z 予報)

EC-AIFS 6-hour Averaged Precip Rate (mm/hr), MSLP (hPa) & 1000-500mb Thickness (dam)

Init: 12z Jun 30 2026 Forecast Hour: [12] valid at 00z Wed, Jul 01 2026

TROPICALTIDBITS.COM

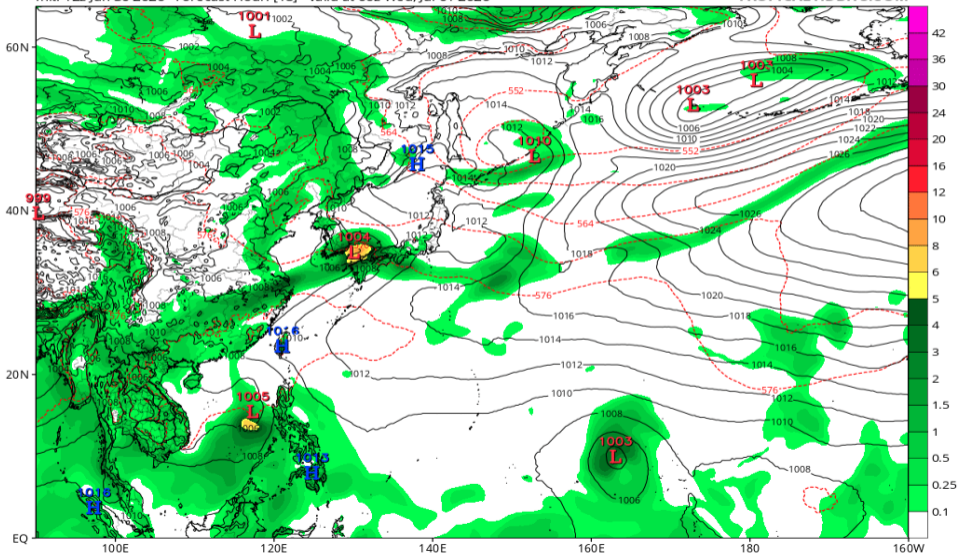


# 地上気圧配置 (AIFS 07/01 06Z 予報)

EC-AIFS 6-hour Averaged Precip Rate (mm/hr), MSLP (hPa) & 1000-500mb Thickness (dam)

Init: 12z Jun 30 2026 Forecast Hour: [18] valid at 06z Wed, Jul 01 2026

TROPICALTIDBITS.COM

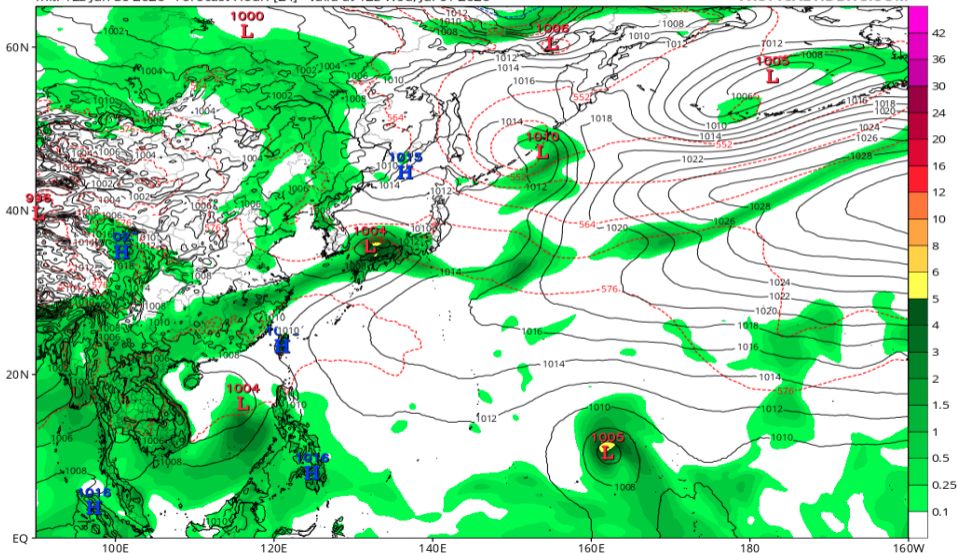


# 地上気圧配置 (AIFS 07/01 12Z 予報)

EC-AIFS 6-hour Averaged Precip Rate (mm/hr), MSLP (hPa) & 1000-500mb Thickness (dam)

Init: 12z Jun 30 2026 Forecast Hour: [24] valid at 12z Wed, Jul 01 2026

TROPICALTIDBITS.COM

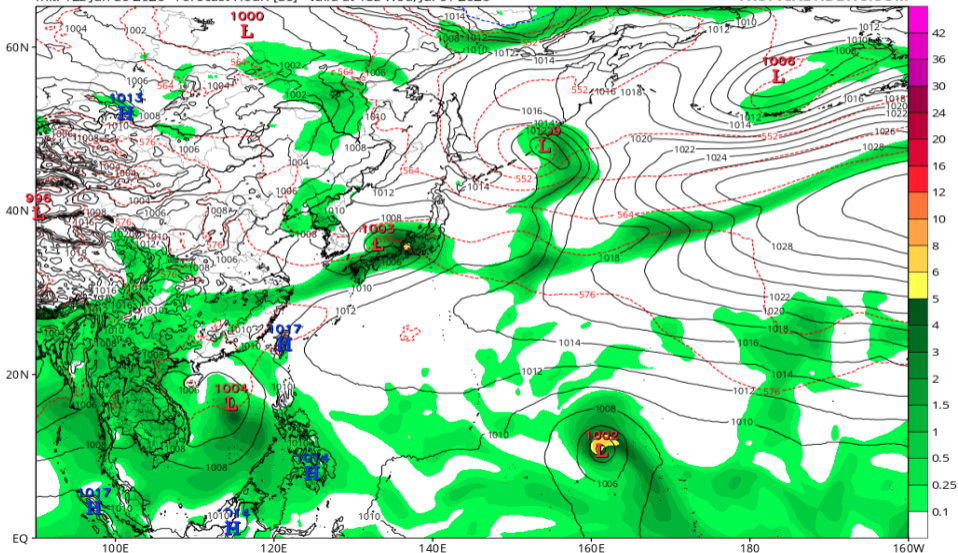


# 地上気圧配置 (AIFS 07/01 18Z 予報)

EC-AIFS 6-hour Averaged Precip Rate (mm/hr), MSLP (hPa) & 1000-500mb Thickness (dam)

Init: 12z Jun 30 2026 Forecast Hour: [30] valid at 18z Wed, Jul 01 2026

TROPICALTIDBITS.COM

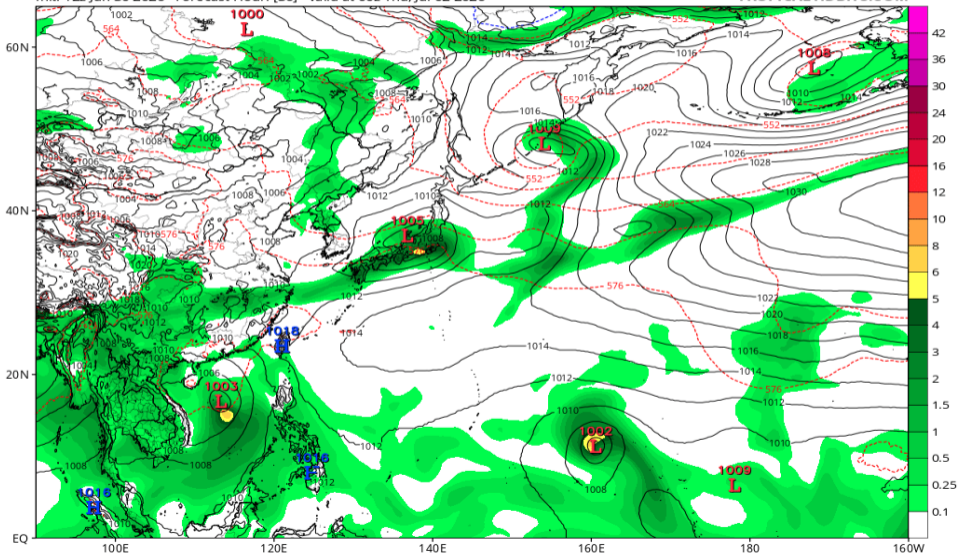


# 地上気圧配置 (AIFS 07/02 00Z 予報)

EC-AIFS 6-hour Averaged Precip Rate (mm/hr), MSLP (hPa) & 1000-500mb Thickness (dam)

Init: 12z Jun 30 2026 Forecast Hour: [36] valid at 00z Thu, Jul 02 2026

TROPICALTIDBITS.COM

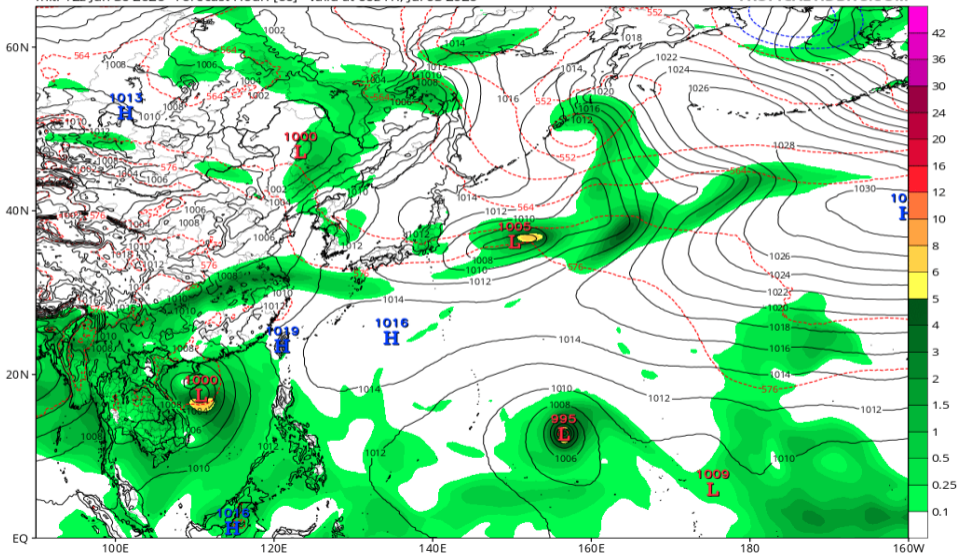


# 地上気圧配置 (AIFS 07/03 00Z 予報)

EC-AIFS 6-hour Averaged Precip Rate (mm/hr), MSLP (hPa) & 1000-500mb Thickness (dam)

Init: 12z Jun 30 2026 Forecast Hour: [60] valid at 00z Fri, Jul 03 2026

TROPICALTIDBITS.COM

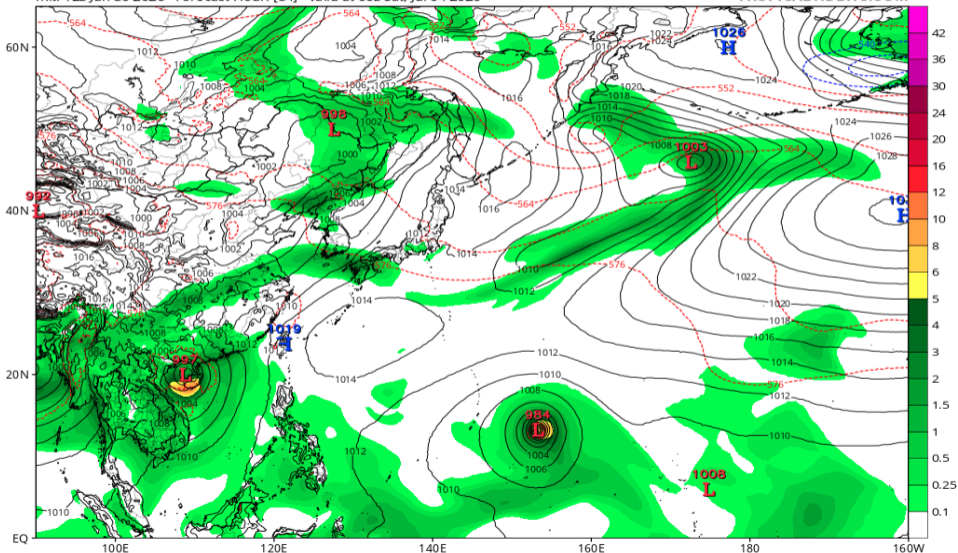


# 地上気圧配置 (AIFS 07/04 00Z 予報)

EC-AIFS 6-hour Averaged Precip Rate (mm/hr), MSLP (hPa) & 1000-500mb Thickness (dam)

Init: 12z Jun 30 2026 Forecast Hour: [84] valid at 00z Sat, Jul 04 2026

TROPICALTIDBITS.COM

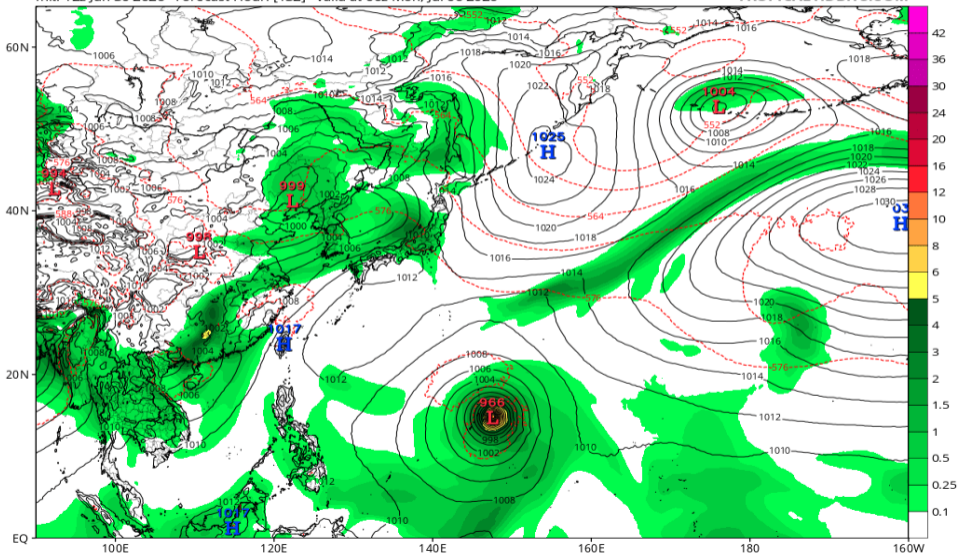


# 地上気圧配置 (AIFS 07/06 00Z 予報)

EC-AIFS 6-hour Averaged Precip Rate (mm/hr), MSLP (hPa) & 1000-500mb Thickness (dam)

Init: 12z Jun 30 2026 Forecast Hour: [132] valid at 00z Mon, Jul 06 2026

TROPICALTIDBITS.COM

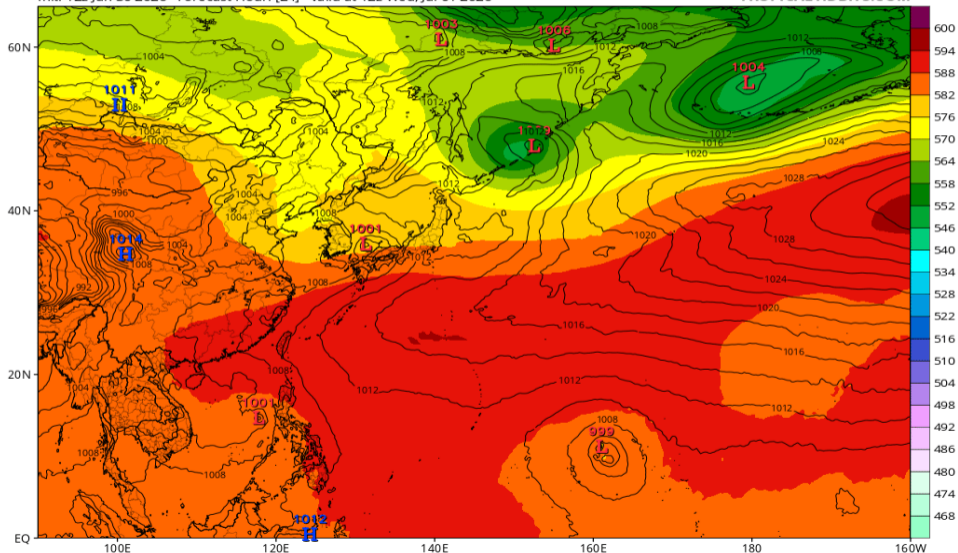


# Z500/地上気圧配置 (GFS 07/01 12Z 予報)

GFS 500mb Geopotential Height (dam) & MSLP (mb)

Init: 12z Jun 30 2026 Forecast Hour: [24] valid at 12z Wed, Jul 01 2026

TROPICALTIDBITS.COM

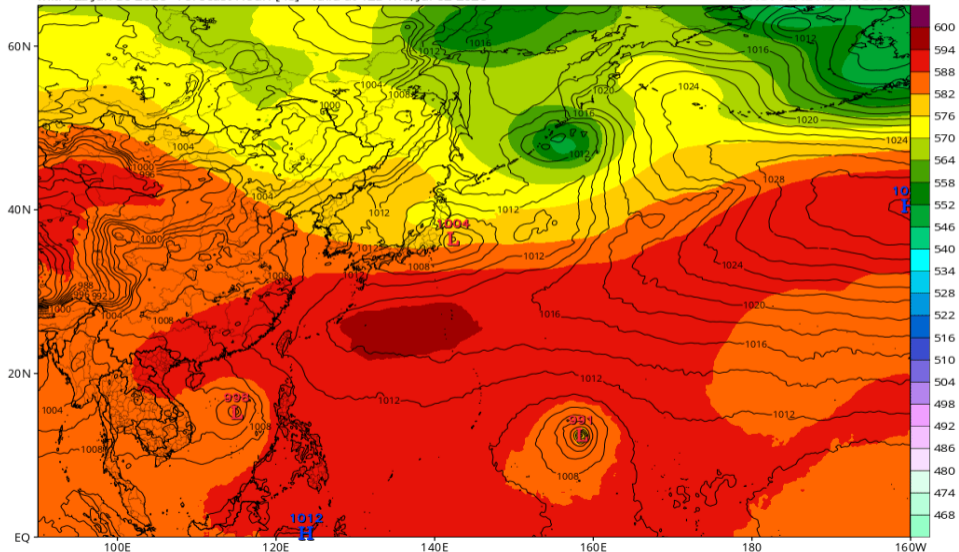


# Z500/地上気圧配置 (GFS 07/02 12Z 予報)

GFS 500mb Geopotential Height (dam) & MSLP (mb)

Init: 12z Jun 30 2026 Forecast Hour: [48] valid at 12z Thu, Jul 02 2026

TROPICALTIDBITS.COM

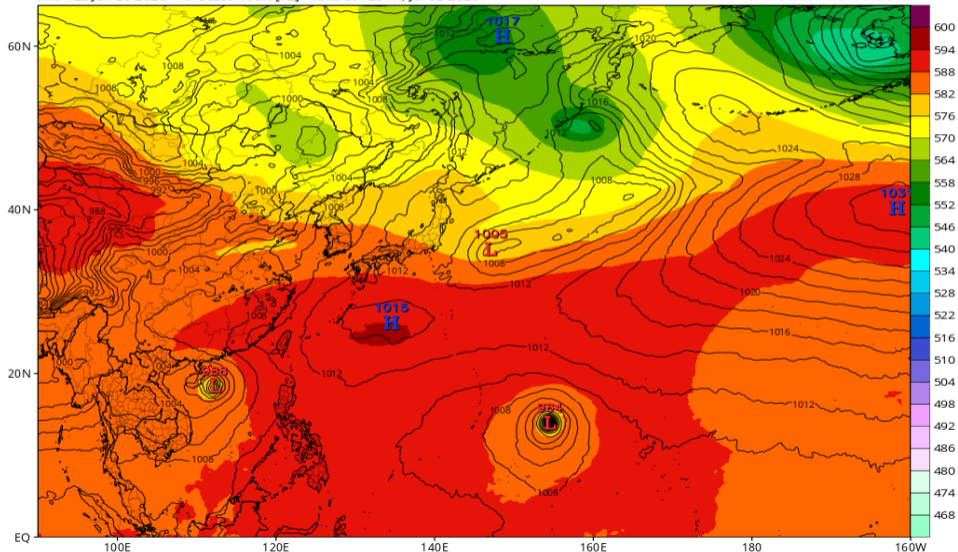


# Z500/地上気圧配置 (GFS 07/03 12Z 予報)

GFS 500mb Geopotential Height (dam) & MSLP (mb)

Init: 12z Jun 30 2026 Forecast Hour: [72] valid at 12z Fri, Jul 03 2026

TROPICALTIDBITS.COM

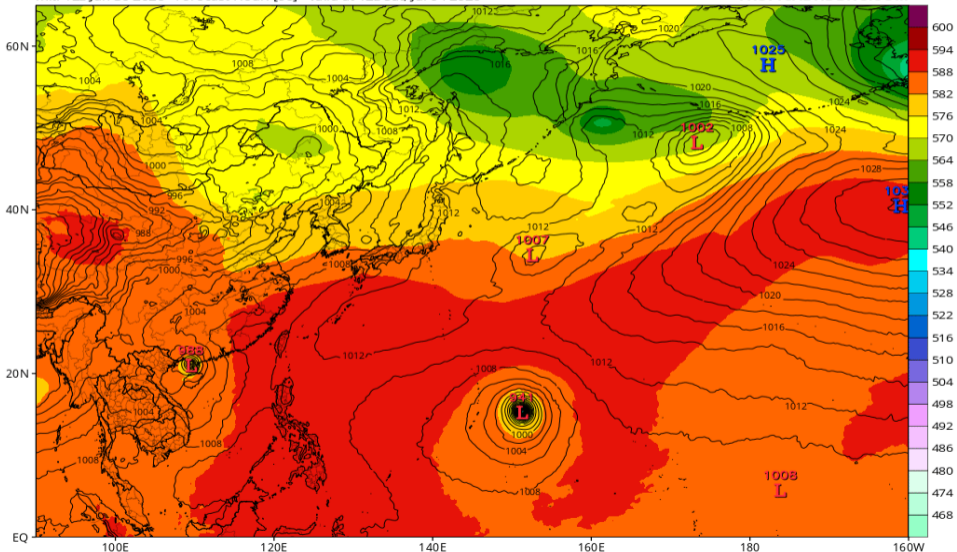


# Z500/地上気圧配置 (GFS 07/04 12Z 予報)

GFS 500mb Geopotential Height (dam) & MSLP (mb)

Init: 12z Jun 30 2026 Forecast Hour: [96] valid at 12z Sat, Jul 04 2026

TROPICALTIDBITS.COM

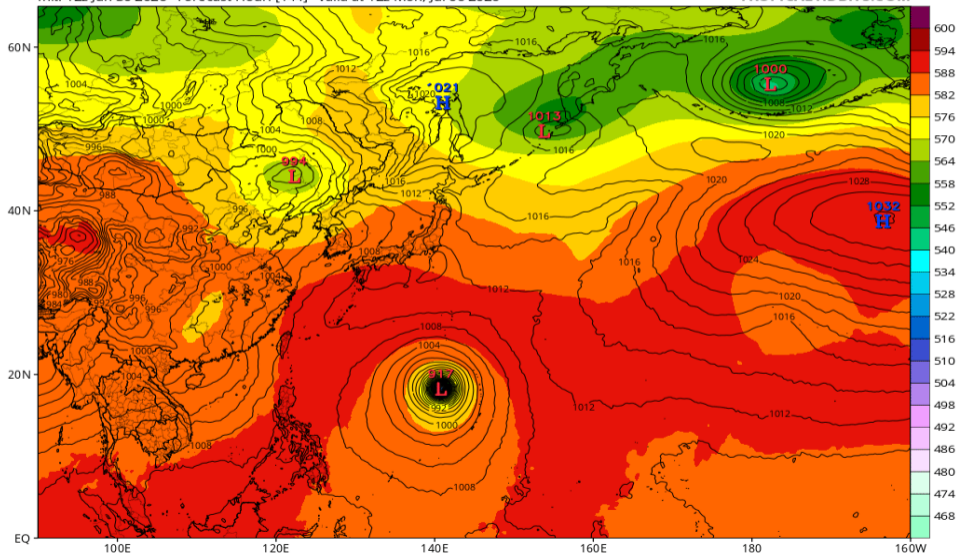


# Z500/地上気圧配置 (GFS 07/06 12Z 予報)

GFS 500mb Geopotential Height (dam) & MSLP (mb)

Init: 12z Jun 30 2026 Forecast Hour: [144] valid at 12z Mon, Jul 06 2026

TROPICALTIDBITS.COM

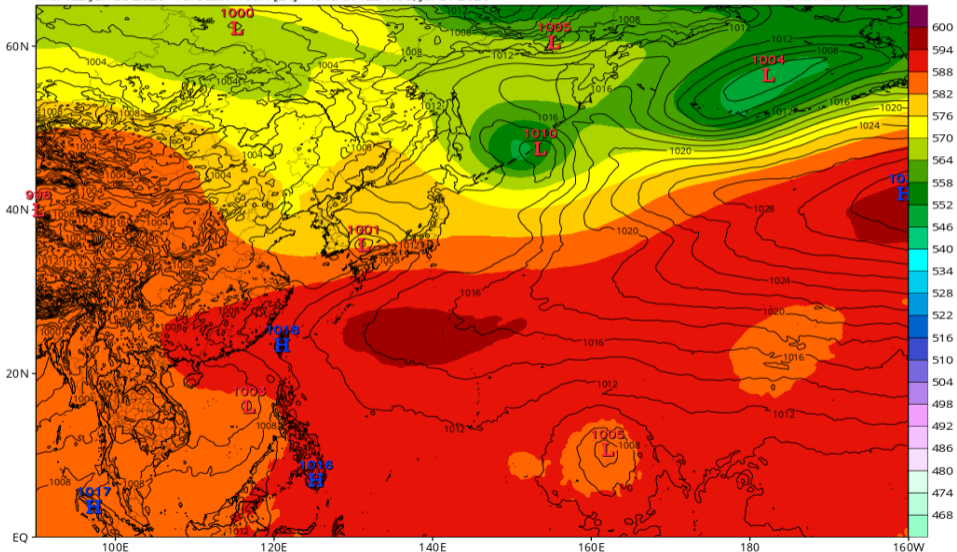


# Z500/地上気圧配置 (ECMWF 07/01 12Z 予報)

ECMWF 500mb Geopotential Height (dam) & MSLP (mb)

Init: 12z Jun 30 2026 Forecast Hour: [24] valid at 12z Wed, Jul 01 2026

TROPICALTIDBITS.COM

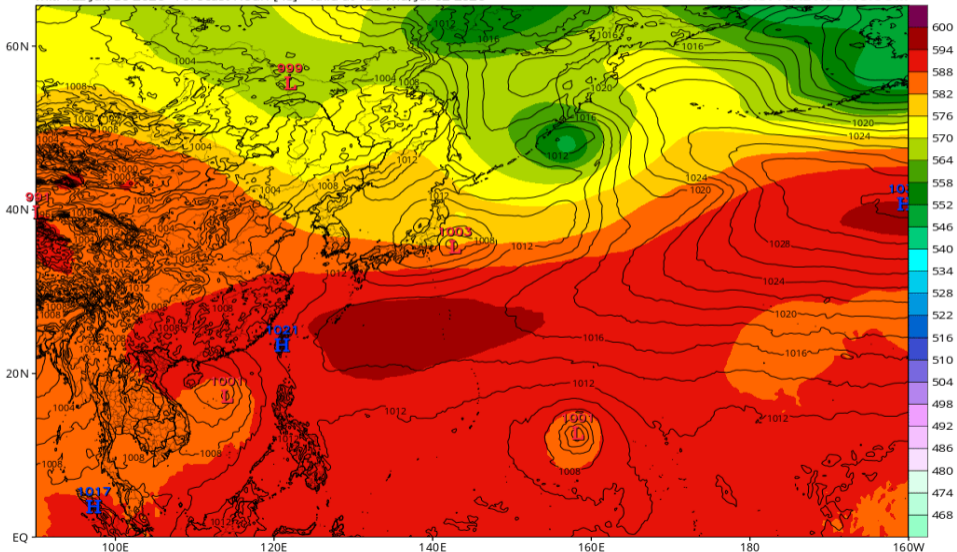


# Z500/地上気圧配置 (ECMWF 07/02 12Z 予報)

ECMWF 500mb Geopotential Height (dam) & MSLP (mb)

Init: 12z Jun 30 2026 Forecast Hour: [48] valid at 12z Thu, Jul 02 2026

TROPICALTIDBITS.COM

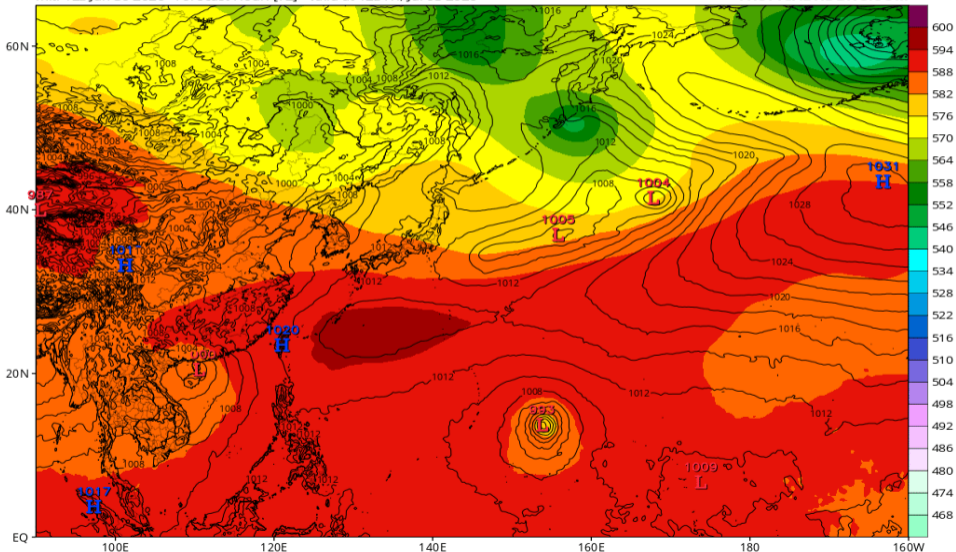


# Z500/地上気圧配置 (ECMWF 07/03 12Z 予報)

ECMWF 500mb Geopotential Height (dam) & MSLP (mb)

Init: 12z Jun 30 2026 Forecast Hour: [72] valid at 12z Fri, Jul 03 2026

TROPICALTIDBITS.COM

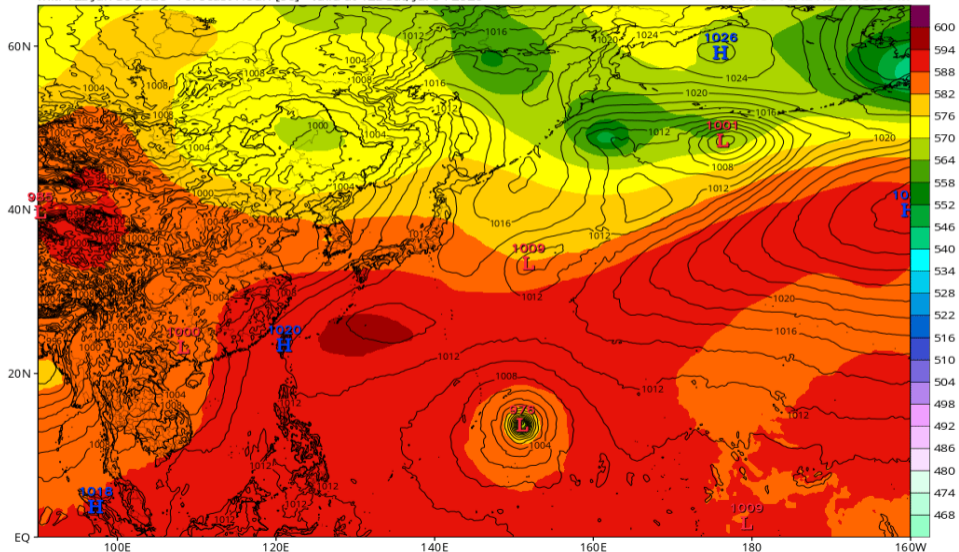


# Z500/地上気圧配置 (ECMWF 07/04 12Z 予報)

ECMWF 500mb Geopotential Height (dam) & MSLP (mb)

Init: 12z Jun 30 2026 Forecast Hour: [96] valid at 12z Sat, Jul 04 2026

TROPICALTIDBITS.COM

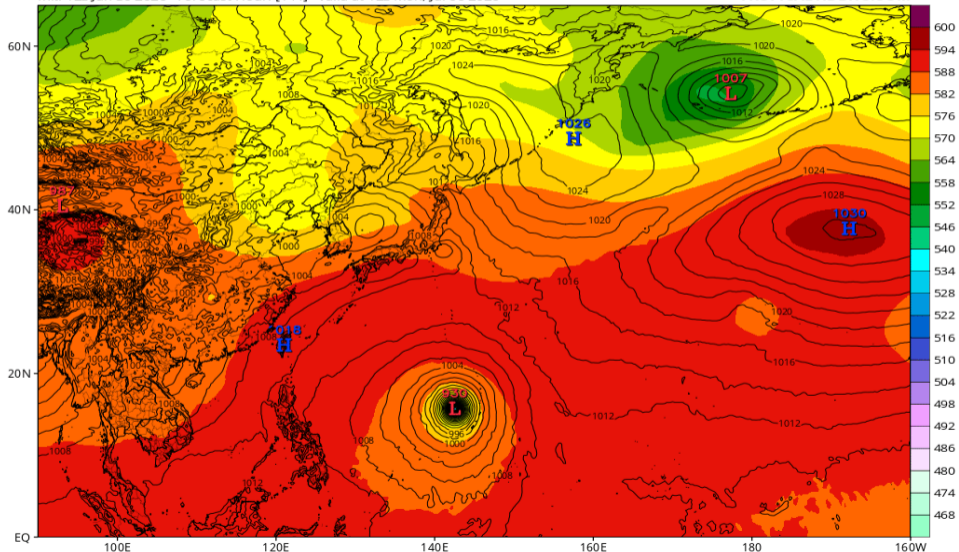


# Z500/地上気圧配置 (ECMWF 07/06 12Z 予報)

ECMWF 500mb Geopotential Height (dam) & MSLP (mb)

Init: 12z Jun 30 2026 Forecast Hour: [144] valid at 12z Mon, Jul 06 2026

TROPICALTIDBITS.COM

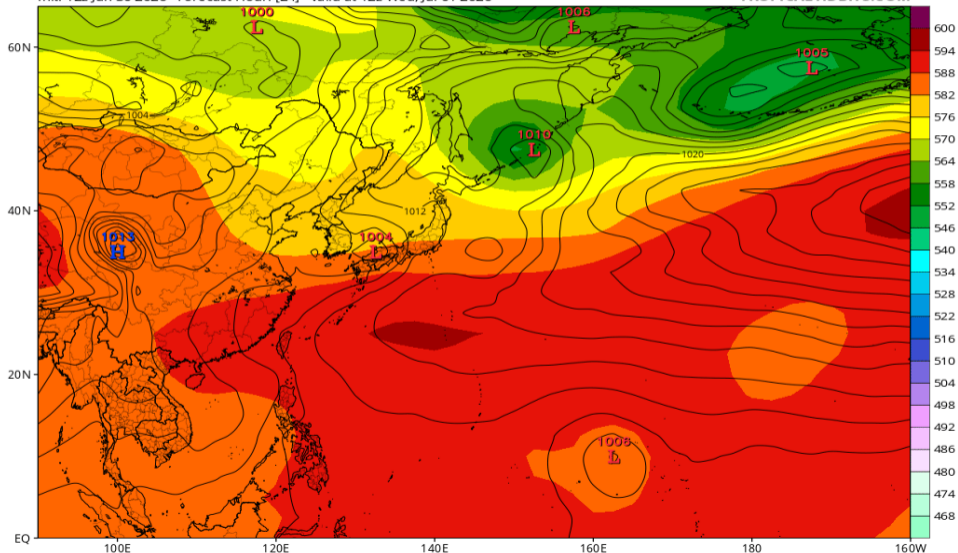


# Z500/地上気圧配置 (JMA-GSM 07/01 12Z 予報)

JMA 500mb Geopotential Height (dam) & MSLP (mb)

Init: 12z Jun 30 2026 Forecast Hour: [24] valid at 12z Wed, Jul 01 2026

TROPICALTIDBITS.COM

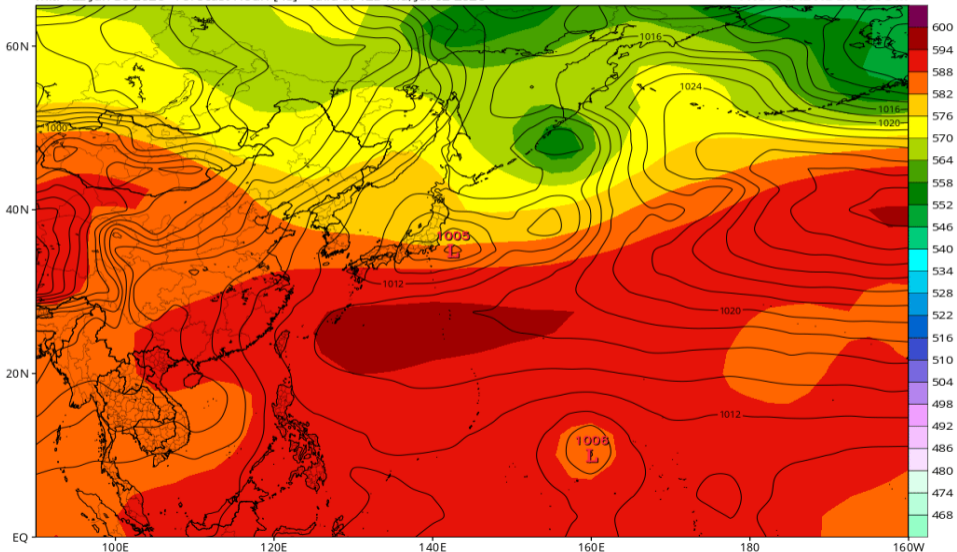


# Z500/地上気圧配置 (JMA-GSM 07/02 12Z 予報)

JMA 500mb Geopotential Height (dam) & MSLP (mb)

Init: 12z Jun 30 2026 Forecast Hour: [48] valid at 12z Thu, Jul 02 2026

TROPICALTIDBITS.COM

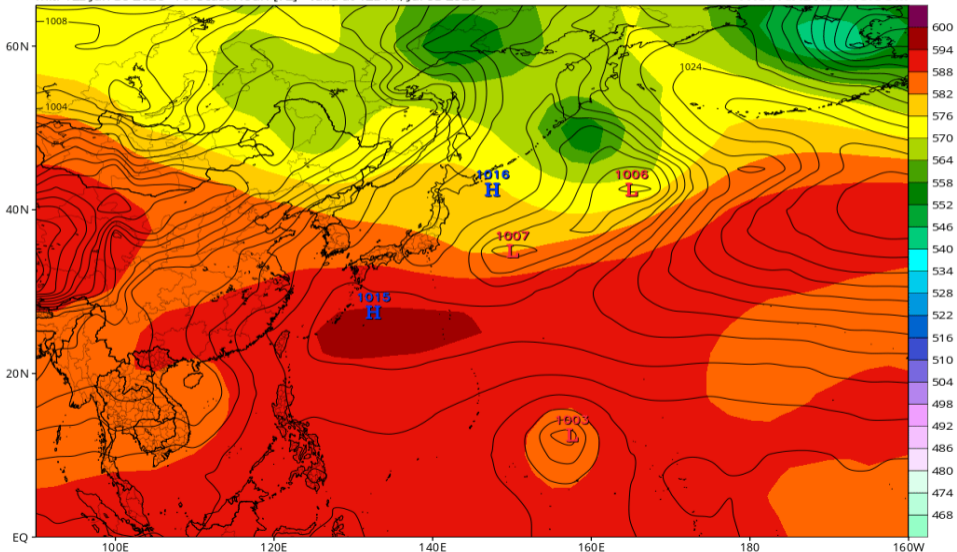


# Z500/地上気圧配置 (JMA-GSM 07/03 12Z 予報)

JMA 500mb Geopotential Height (dam) & MSLP (mb)

Init: 12z Jun 30 2026 Forecast Hour: [72] valid at 12z Fri, Jul 03 2026

TROPICALTIDBITS.COM

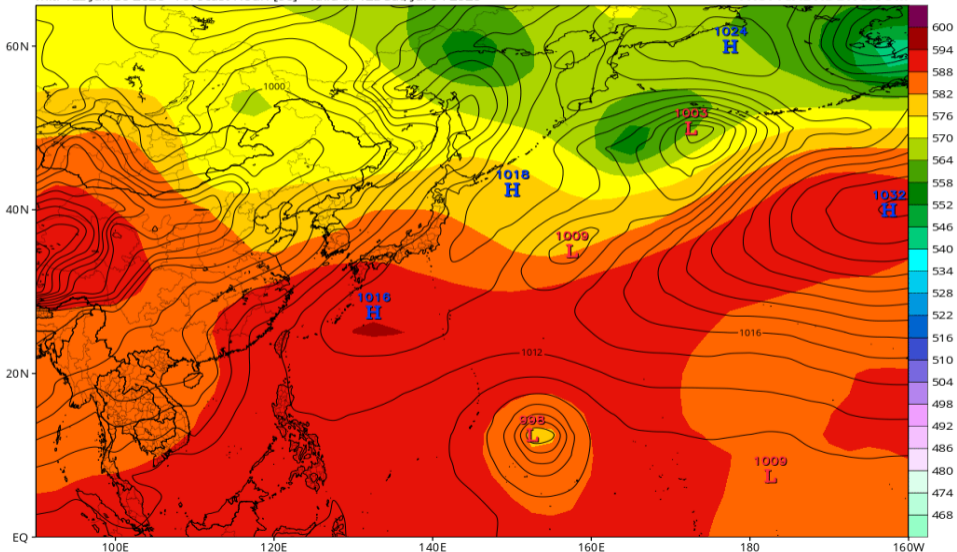


# Z500/地上気圧配置 (JMA-GSM 07/04 12Z 予報)

JMA 500mb Geopotential Height (dam) & MSLP (mb)

Init: 12z Jun 30 2026 Forecast Hour: [96] valid at 12z Sat, Jul 04 2026

TROPICALTIDBITS.COM

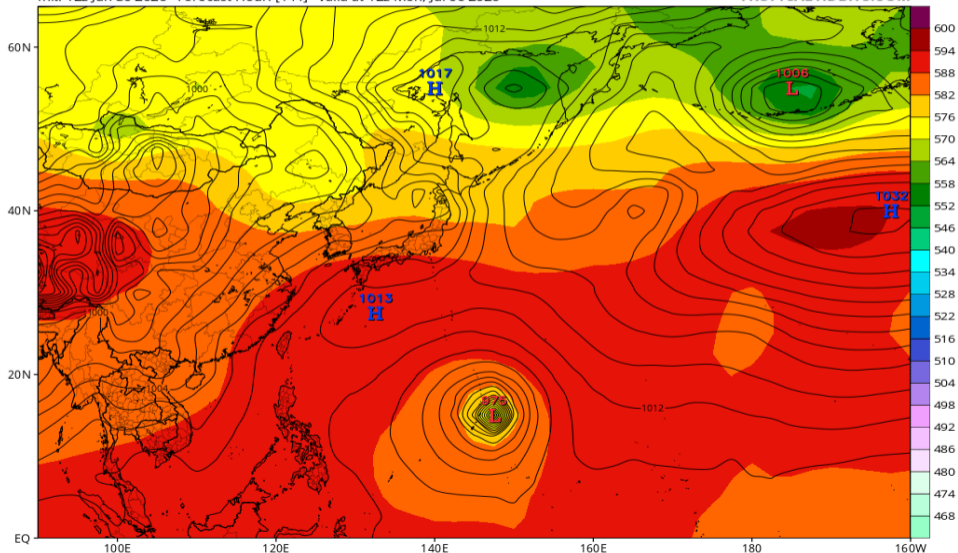


# Z500/地上気圧配置 (JMA-GSM 07/06 12Z 予報)

JMA 500mb Geopotential Height (dam) & MSLP (mb)

Init: 12z Jun 30 2026 Forecast Hour: [144] valid at 12z Mon, Jul 06 2026

TROPICALTIDBITS.COM

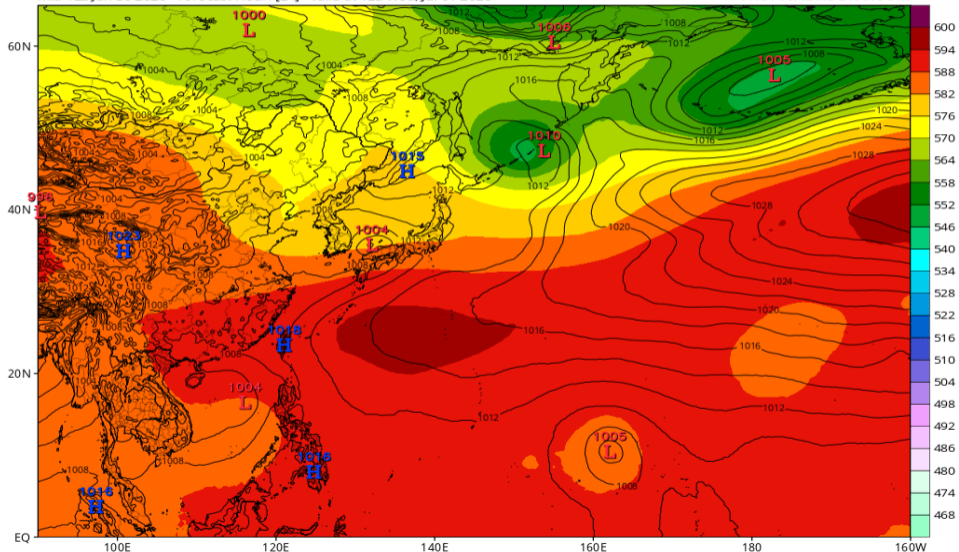


# Z500/地上気圧配置 (AIFS 07/01 12Z 予報)

EC-AIFS 500mb Geopotential Height (dam) & MSLP (mb)

Init: 12z Jun 30 2026 Forecast Hour: [24] valid at 12z Wed, Jul 01 2026

TROPICALTIDBITS.COM

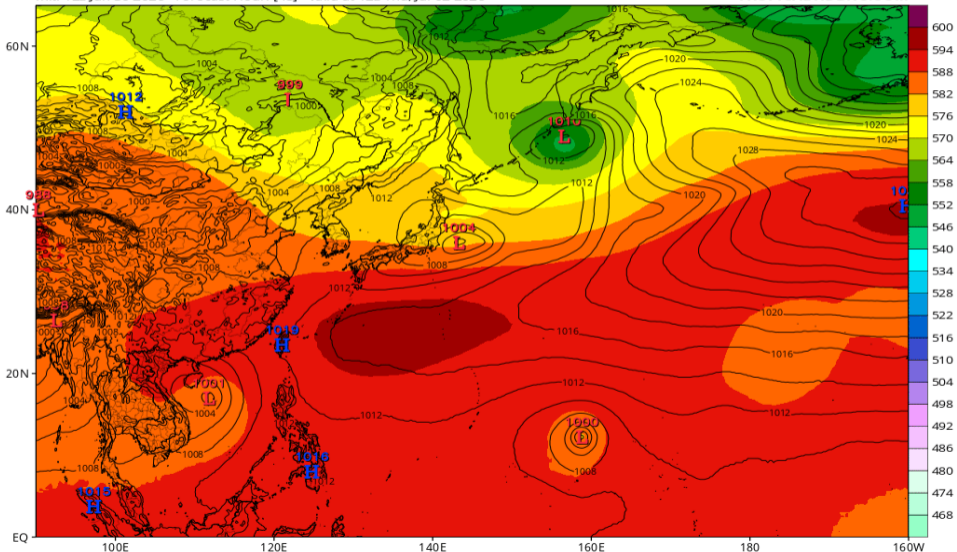


# Z500/地上気圧配置 (AIFS 07/02 12Z 予報)

EC-AIFS 500mb Geopotential Height (dam) & MSLP (mb)

Init: 12z Jun 30 2026 Forecast Hour: [48] valid at 12z Thu, Jul 02 2026

TROPICALTIDBITS.COM

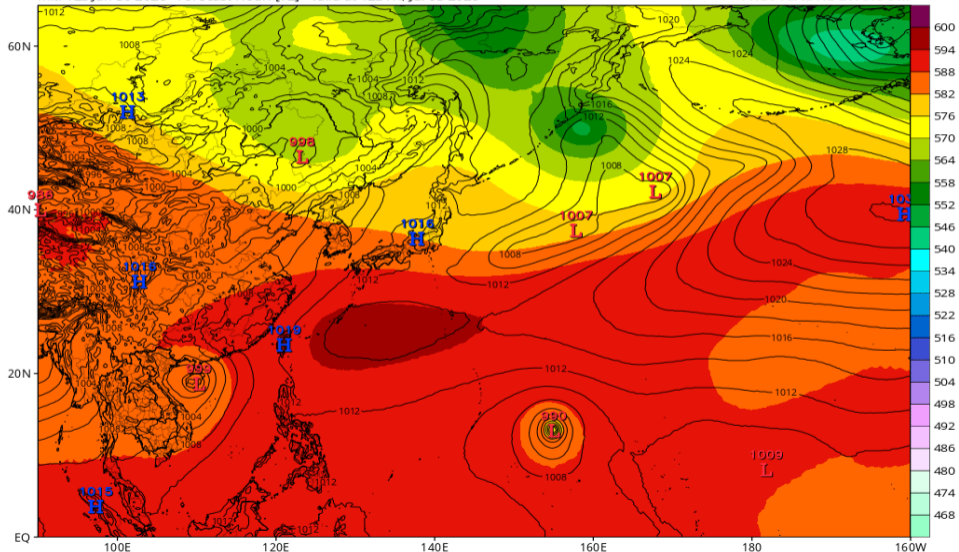


# Z500/地上気圧配置 (AIFS 07/03 12Z 予報)

EC-AIFS 500mb Geopotential Height (dam) & MSLP (mb)

Init: 12z Jun 30 2026 Forecast Hour: [72] valid at 12z Fri, Jul 03 2026

TROPICALTIDBITS.COM

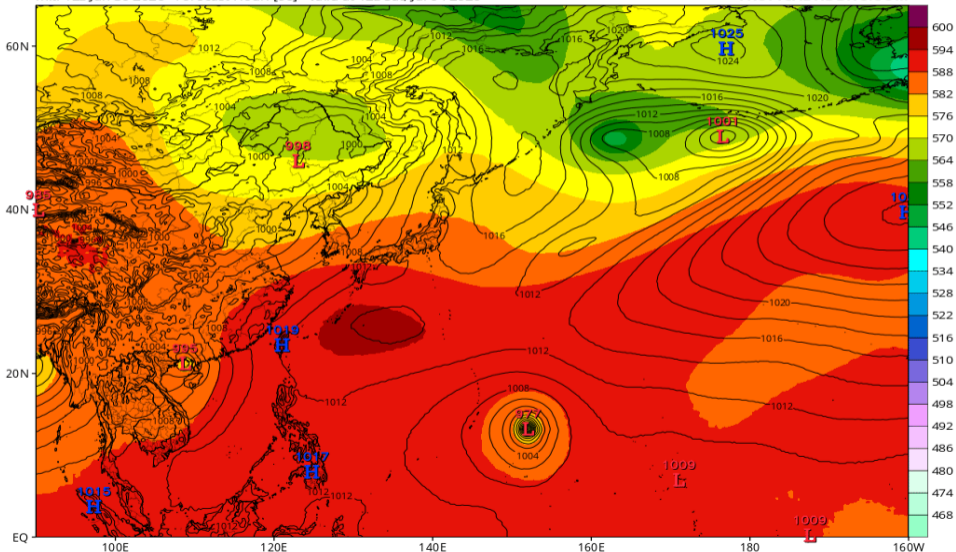


# Z500/地上気圧配置 (AIFS 07/04 12Z 予報)

EC-AIFS 500mb Geopotential Height (dam) & MSLP (mb)

Init: 12z Jun 30 2026 Forecast Hour: [96] valid at 12z Sat, Jul 04 2026

TROPICALTIDBITS.COM

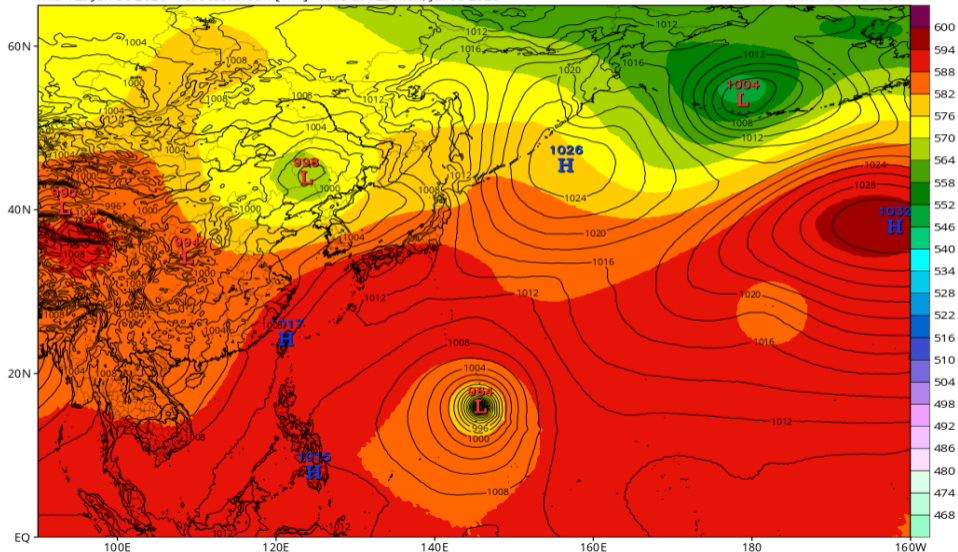


# Z500/地上気圧配置 (AIFS 07/06 12Z 予報)

EC-AIFS 500mb Geopotential Height (dam) & MSLP (mb)

Init: 12z Jun 30 2026 Forecast Hour: [144] valid at 12z Mon, Jul 06 2026

TROPICALTIDBITS.COM

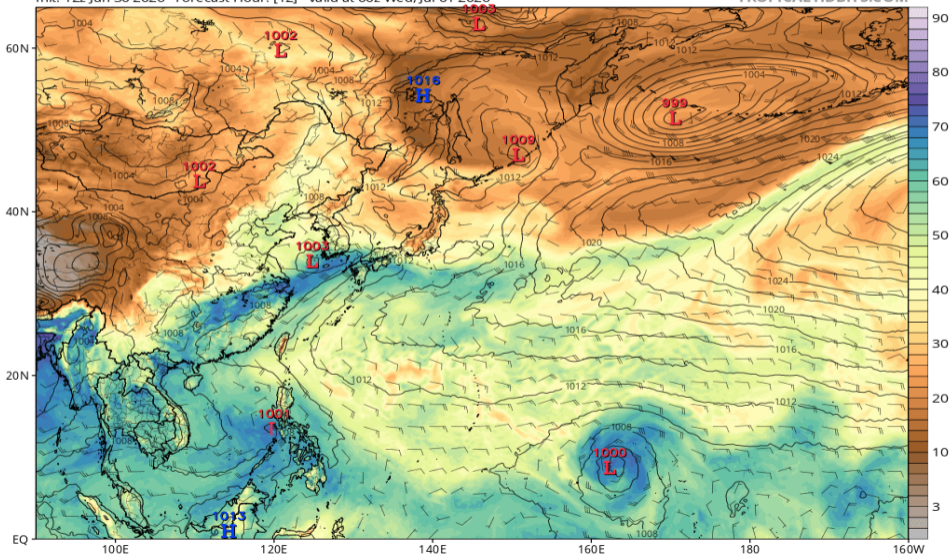


# 可降水量 (GFS 07/01 00Z 予報)

GFS MSLP (mb), Total Precipitable Water (mm), and 850mb Wind (kt)

Init: 12z Jun 30 2026 Forecast Hour: [12] valid at 00z Wed, Jul 01 2026

TROPICALTIDBITS.COM

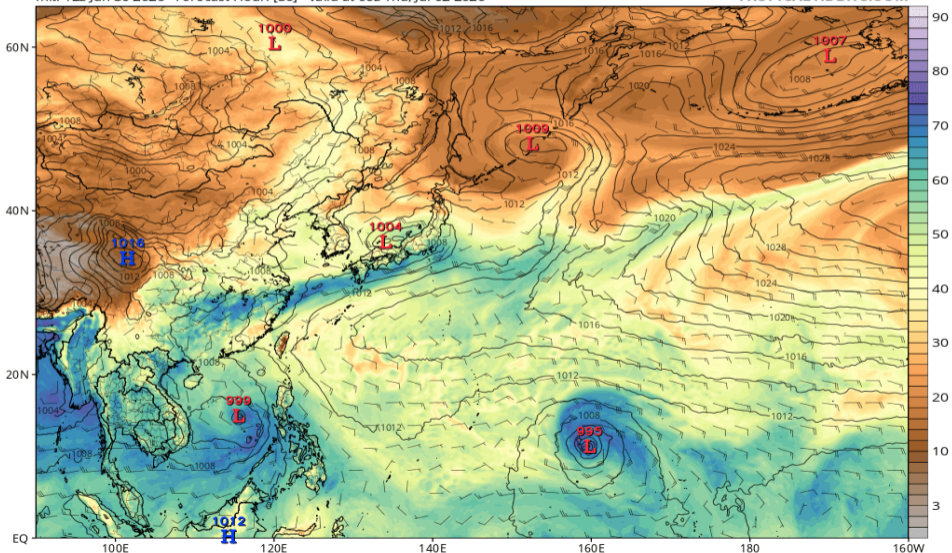


# 可降水量 (GFS 07/02 00Z 予報)

GFS MSLP (mb), Total Precipitable Water (mm), and 850mb Wind (kt)

Init: 12z Jun 30 2026 Forecast Hour: [36] valid at 00z Thu, Jul 02 2026

TROPICALTIDBITS.COM

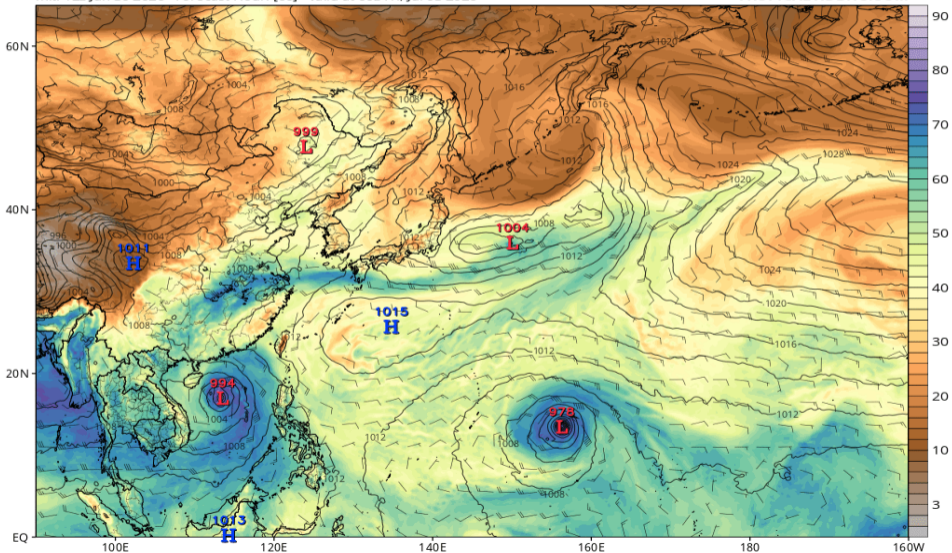


# 可降水量 (GFS 07/03 00Z 予報)

GFS MSLP (mb), Total Precipitable Water (mm), and 850mb Wind (kt)

Init: 12z Jun 30 2026 Forecast Hour: [60] valid at 00z Fri, Jul 03 2026

TROPICALTIDBITS.COM

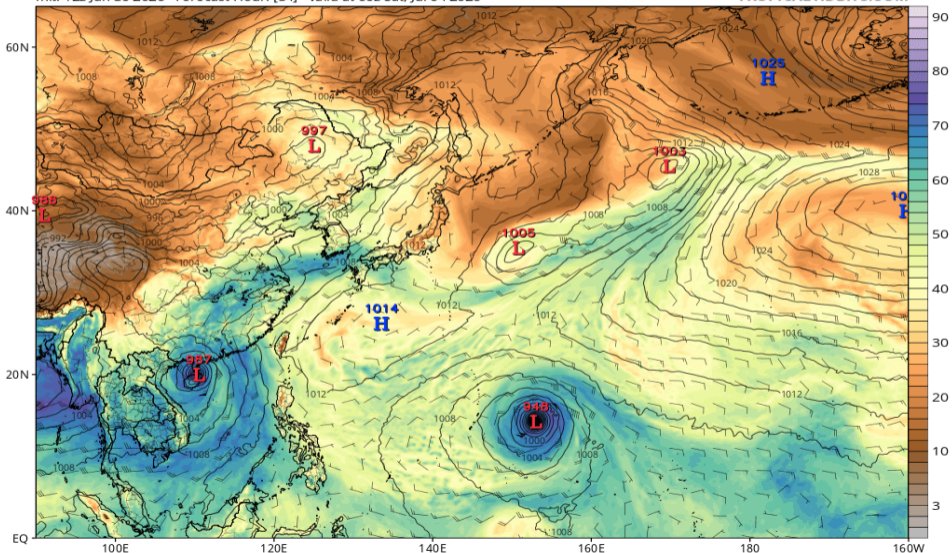


# 可降水量 (GFS 07/04 00Z 予報)

GFS MSLP (mb), Total Precipitable Water (mm), and 850mb Wind (kt)

Init: 12z Jun 30 2026 Forecast Hour: [84] valid at 00z Sat, Jul 04 2026

TROPICALTIDBITS.COM

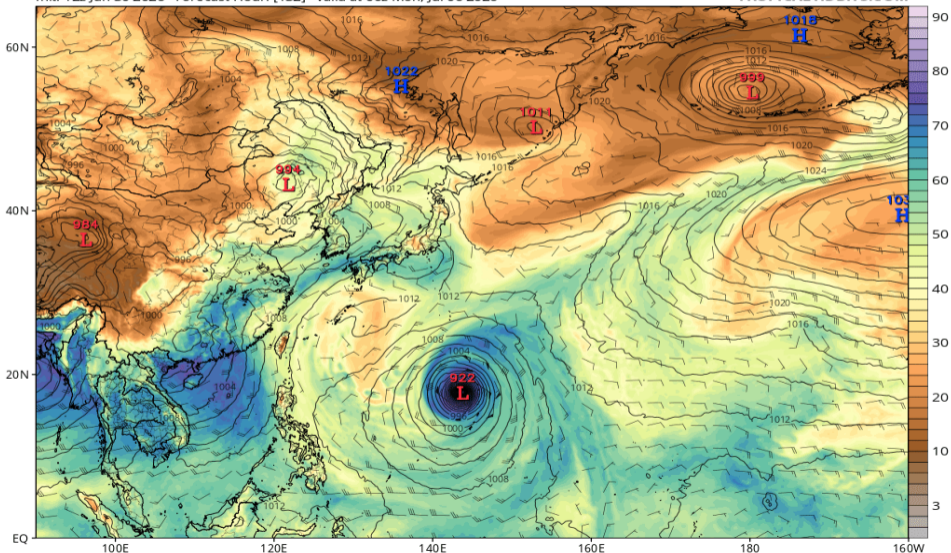


# 可降水量 (GFS 07/06 00Z 予報)

GFS MSLP (mb), Total Precipitable Water (mm), and 850mb Wind (kt)

Init: 12z Jun 30 2026 Forecast Hour: [132] valid at 00z Mon, Jul 06 2026

TROPICALTIDBITS.COM

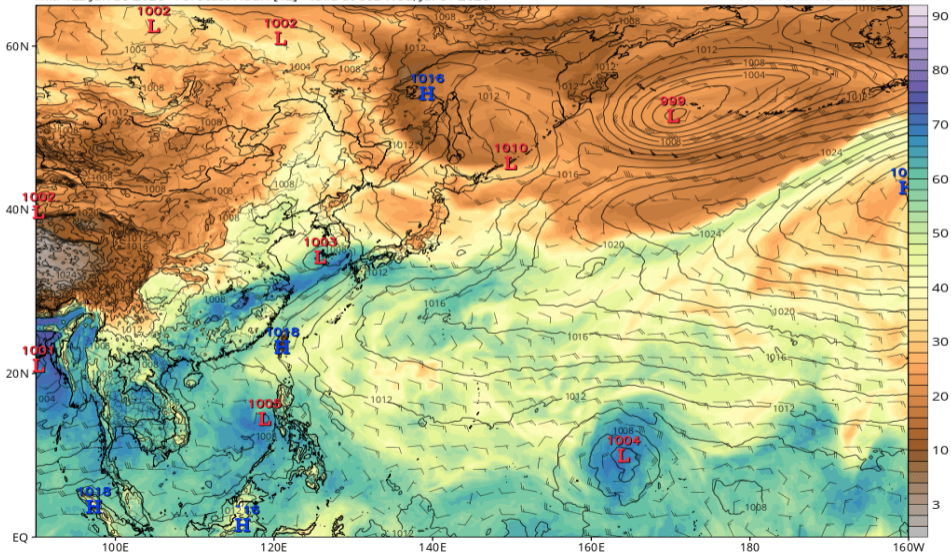


# 可降水量 (ECMWF 07/01 00Z 予報)

ECMWF MSLP (mb), Total Precipitable Water (mm), and 850mb Wind (kt)

Init: 12z Jun 30 2026 Forecast Hour: [12] valid at 00z Wed, Jul 01 2026

TROPICALTIDBITS.COM

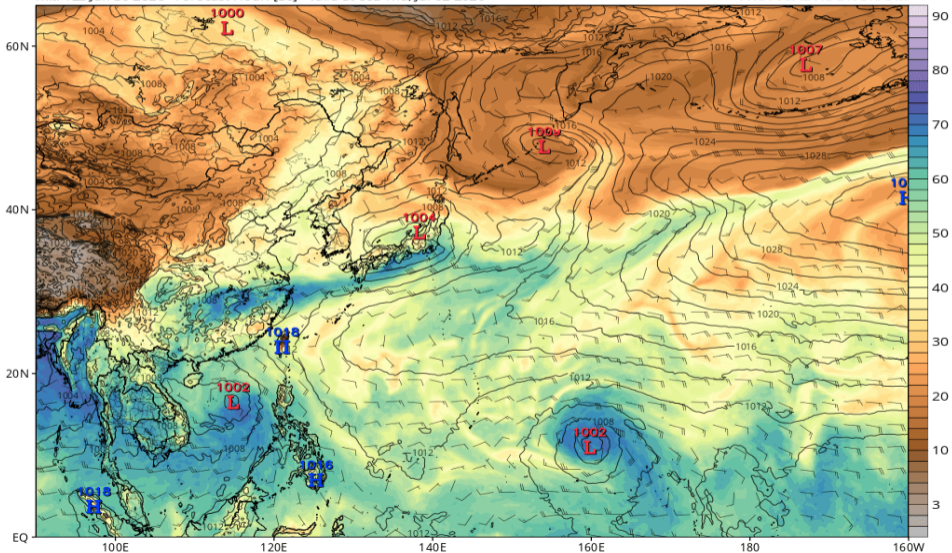


# 可降水量 (ECMWF 07/02 00Z 予報)

ECMWF MSLP (mb), Total Precipitable Water (mm), and 850mb Wind (kt)

Init: 12z Jun 30 2026 Forecast Hour: [36] valid at 00z Thu, Jul 02 2026

TROPICALTIDBITS.COM

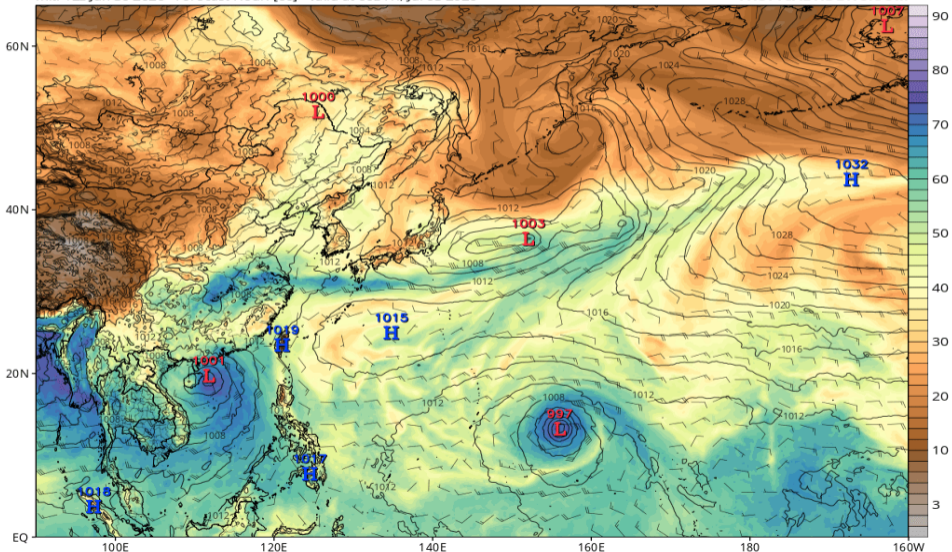


# 可降水量 (ECMWF 07/03 00Z 予報)

ECMWF MSLP (mb), Total Precipitable Water (mm), and 850mb Wind (kt)

Init: 12z Jun 30 2026 Forecast Hour: [60] valid at 00z Fri, Jul 03 2026

TROPICALTIDBITS.COM

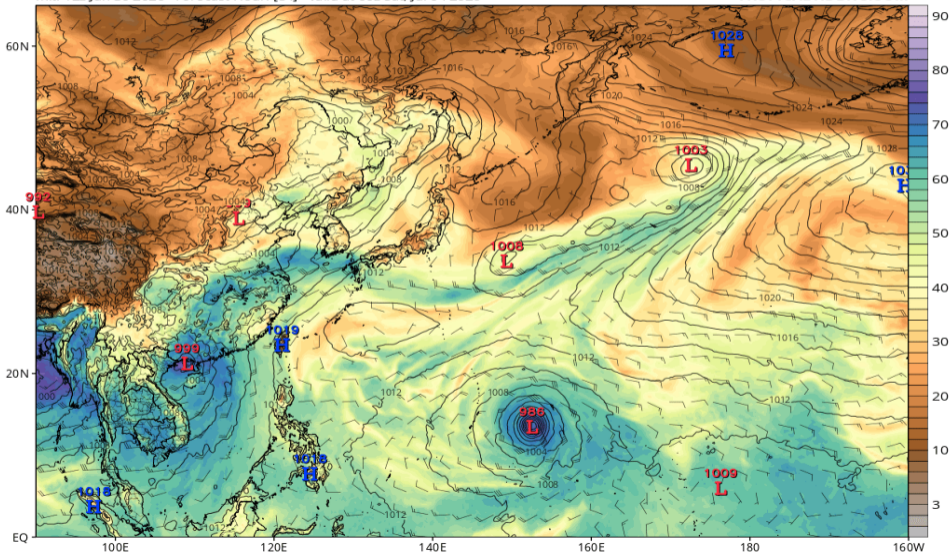


# 可降水量 (ECMWF 07/04 00Z 予報)

ECMWF MSLP (mb), Total Precipitable Water (mm), and 850mb Wind (kt)

Init: 12z Jun 30 2026 Forecast Hour: [84] valid at 00z Sat, Jul 04 2026

TROPICALTIDBITS.COM

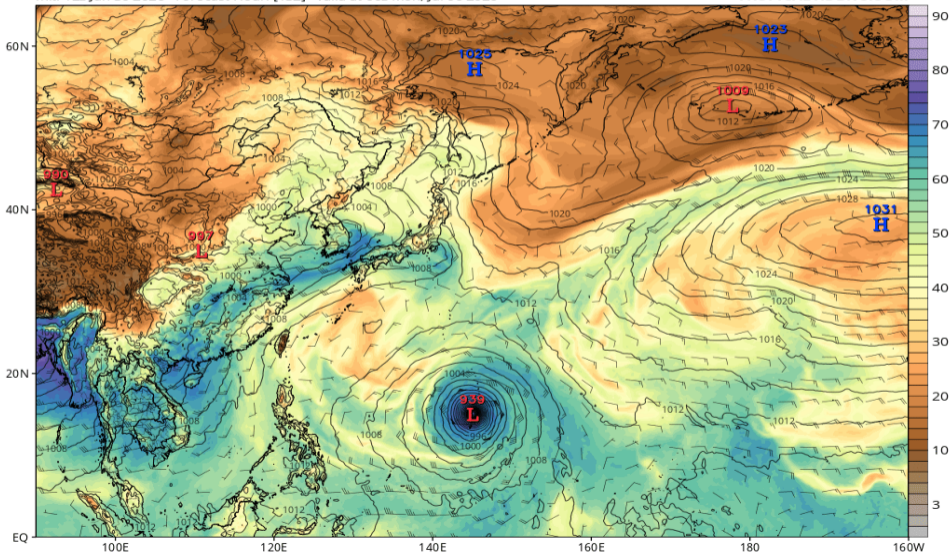


# 可降水量 (ECMWF 07/06 00Z 予報)

ECMWF MSLP (mb), Total Precipitable Water (mm), and 850mb Wind (kt)

Init: 12z Jun 30 2026 Forecast Hour: [132] valid at 00z Mon, Jul 06 2026

TROPICALTIDBITS.COM

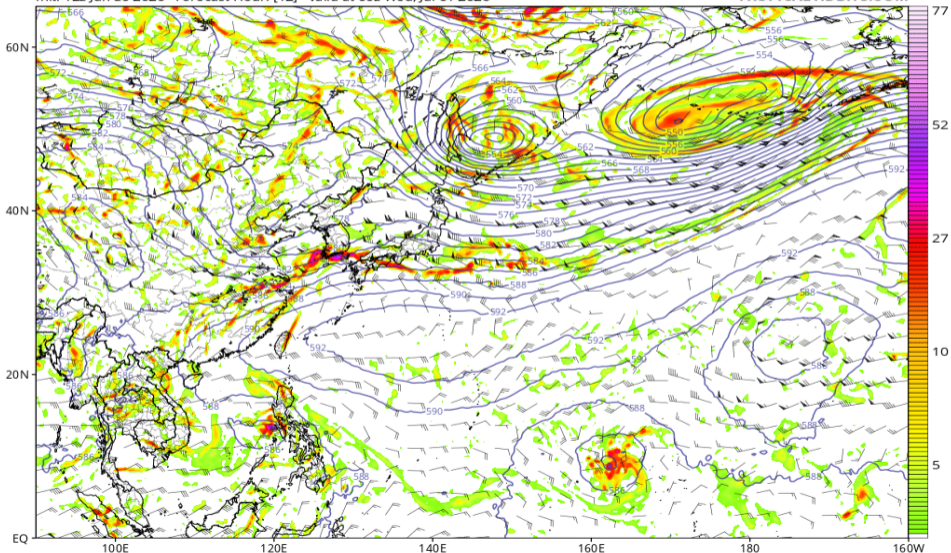


# 渦度 850, Z500, UV200 (GFS 07/01 00Z 予報)

GFS 850 hPa Cyclonic Vorticity ( $10^5 \text{ s}^{-1}$ ), 500 hPa Height (dam), and 200 hPa Wind (kt)

Init: 12z Jun 30 2026 Forecast Hour: [12] valid at 00z Wed, Jul 01 2026

TROPICALTIDBITS.COM

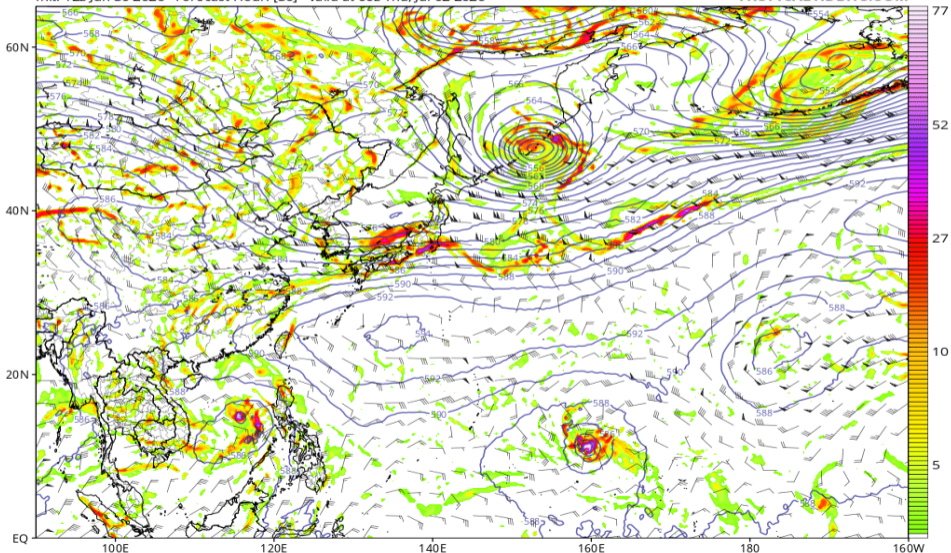


# 渦度 850, Z500, UV200 (GFS 07/02 00Z 予報)

GFS 850 hPa Cyclonic Vorticity ( $10^5 \text{ s}^{-1}$ ), 500 hPa Height (dam), and 200 hPa Wind (kt)

Init: 12z Jun 30 2026 Forecast Hour: [36] valid at 00z Thu, Jul 02 2026

TROPICALTIDBITS.COM

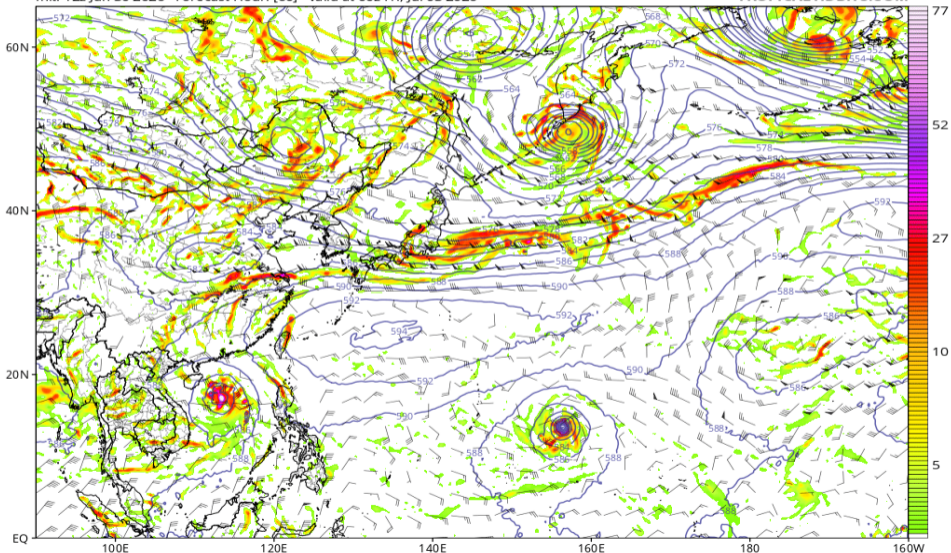


# 渦度 850, Z500, UV200 (GFS 07/03 00Z 予報)

GFS 850 hPa Cyclonic Vorticity ( $10^5 \text{ s}^{-1}$ ), 500 hPa Height (dam), and 200 hPa Wind (kt)

Init: 12z Jun 30 2026 Forecast Hour: [60] valid at 00z Fri, Jul 03 2026

TROPICALTIDBITS.COM

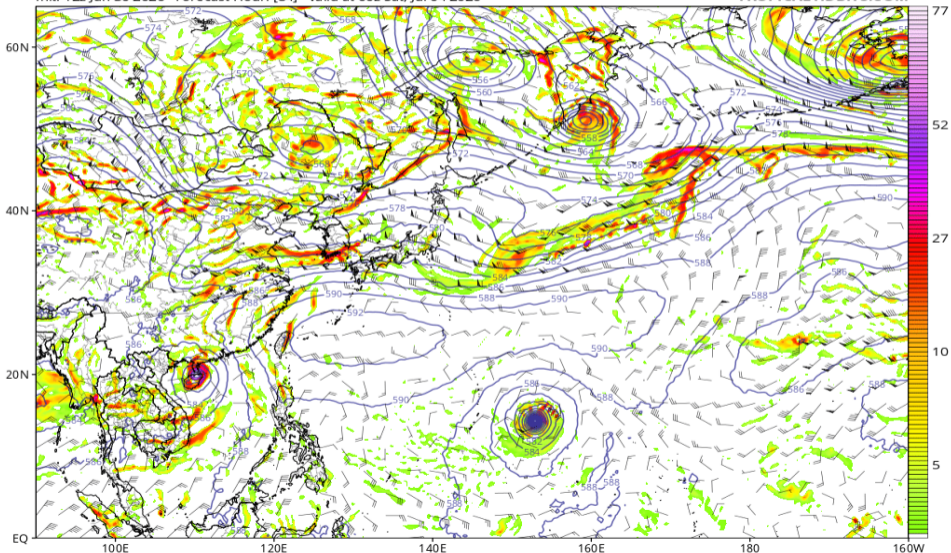


# 渦度 850, Z500, UV200 (GFS 07/04 00Z 予報)

GFS 850 hPa Cyclonic Vorticity ( $10^5 \text{ s}^{-1}$ ), 500 hPa Height (dam), and 200 hPa Wind (kt)

Init: 12z Jun 30 2026 Forecast Hour: [84] valid at 00z Sat, Jul 04 2026

TROPICALTIDBITS.COM

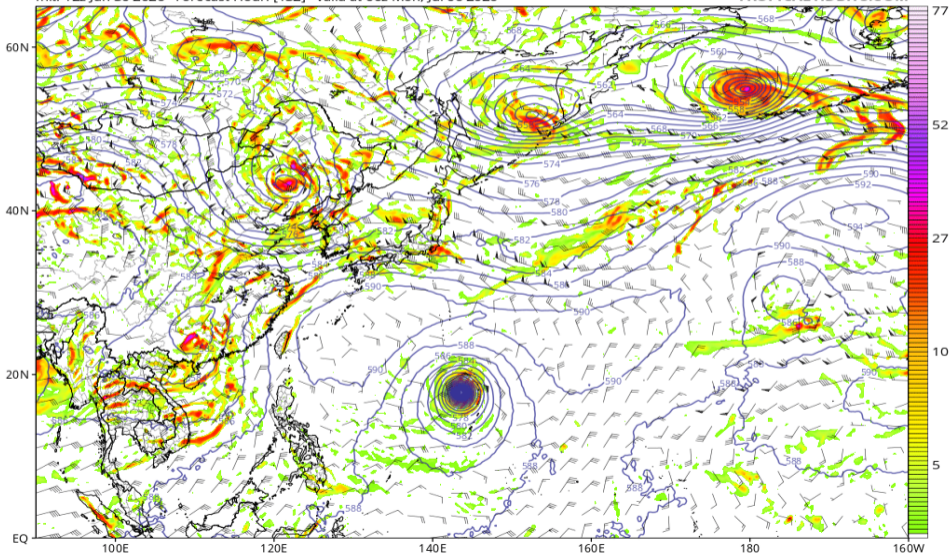


# 渦度 850, Z500, UV200 (GFS 07/06 00Z 予報)

GFS 850 hPa Cyclonic Vorticity ( $10^5 \text{ s}^{-1}$ ), 500 hPa Height (dam), and 200 hPa Wind (kt)

Init: 12z Jun 30 2026 Forecast Hour: [132] valid at 00z Mon, Jul 06 2026

TROPICALTIDBITS.COM

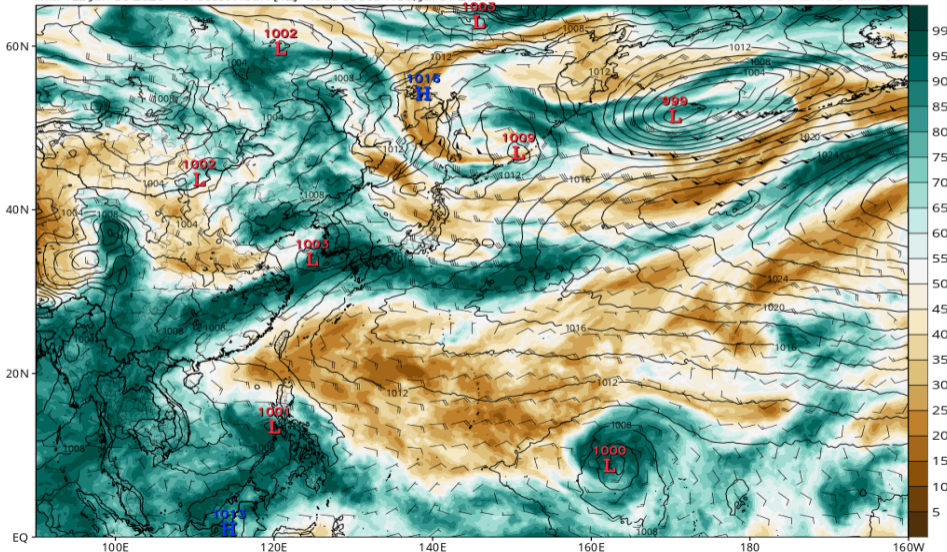


# RH700-300 (GFS 07/01 00Z 予報)

GFS MSLP (mb), 700-300 hPa Relative Humidity (%), and 700-300 hPa Wind (kt)

Init: 12z Jun 30 2026 Forecast Hour: [12] valid at 00z Wed, Jul 01 2026

TROPICALTIDBITS.COM

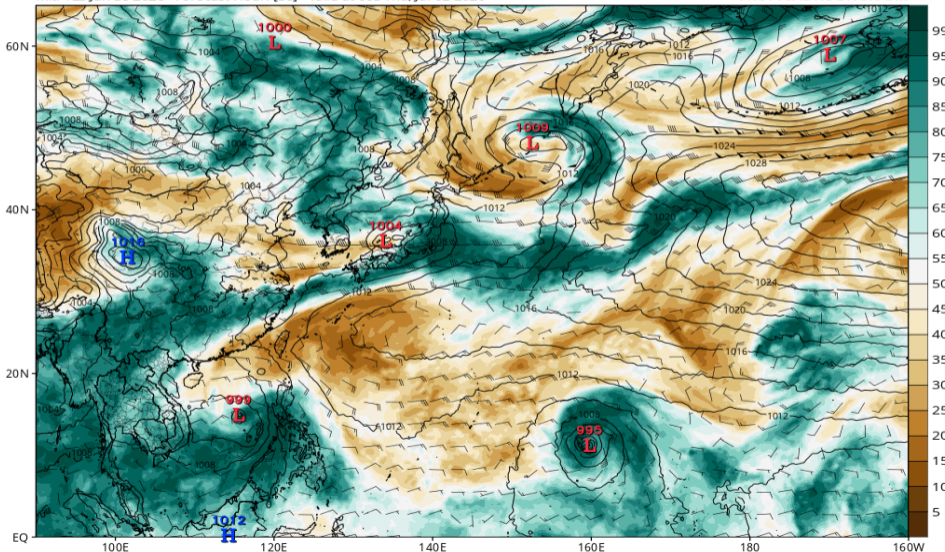


# RH700-300 (GFS 07/02 00Z 予報)

GFS MSLP (mb), 700-300 hPa Relative Humidity (%), and 700-300 hPa Wind (kt)

Init: 12z Jun 30 2026 Forecast Hour: [36] valid at 00z Thu, Jul 02 2026

TROPICALTIDBITS.COM

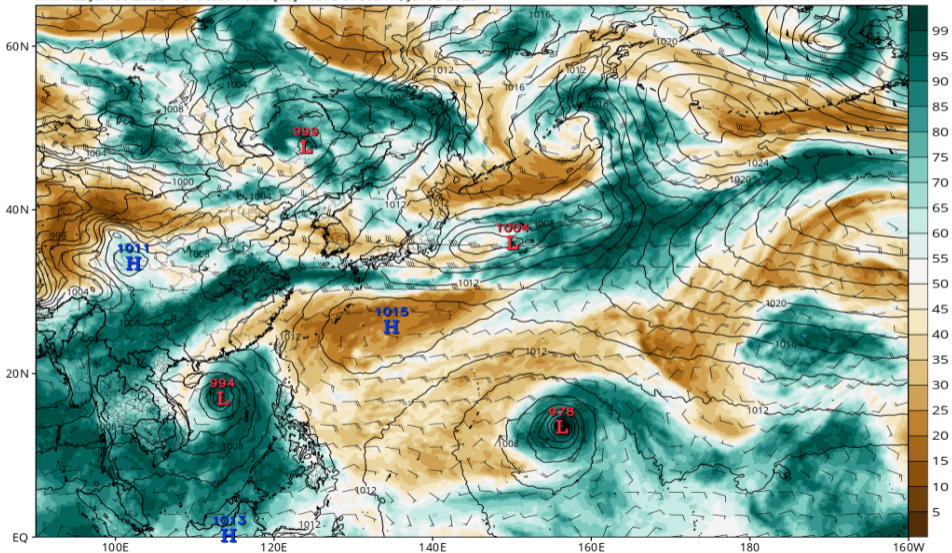


# RH700-300 (GFS 07/03 00Z 予報)

GFS MSLP (mb), 700-300 hPa Relative Humidity (%), and 700-300 hPa Wind (kt)

Init: 12z Jun 30 2026 Forecast Hour: [60] valid at 00z Fri, Jul 03 2026

TROPICALTIDBITS.COM

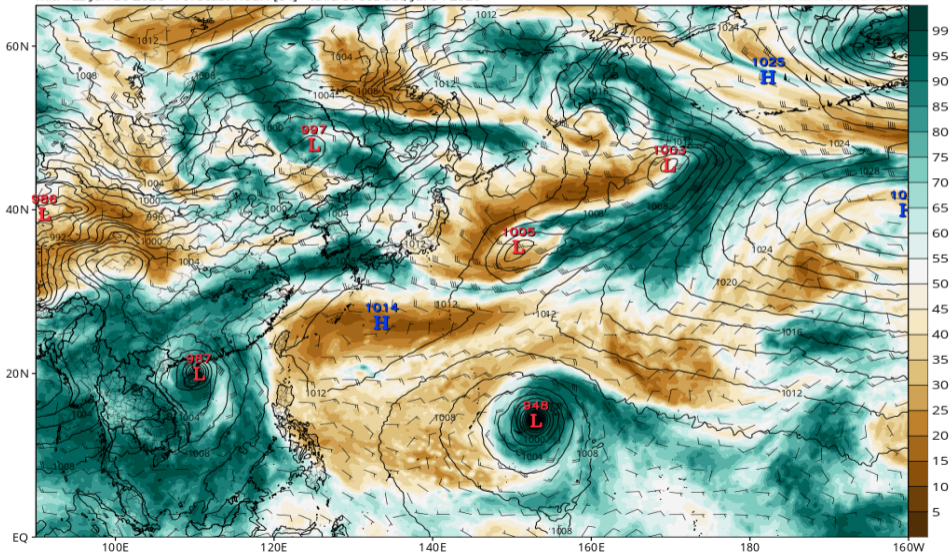


# RH700-300 (GFS 07/04 00Z 予報)

GFS MSLP (mb), 700-300 hPa Relative Humidity (%), and 700-300 hPa Wind (kt)

Init: 12z Jun 30 2026 Forecast Hour: [84] valid at 00z Sat, Jul 04 2026

TROPICALTIDBITS.COM

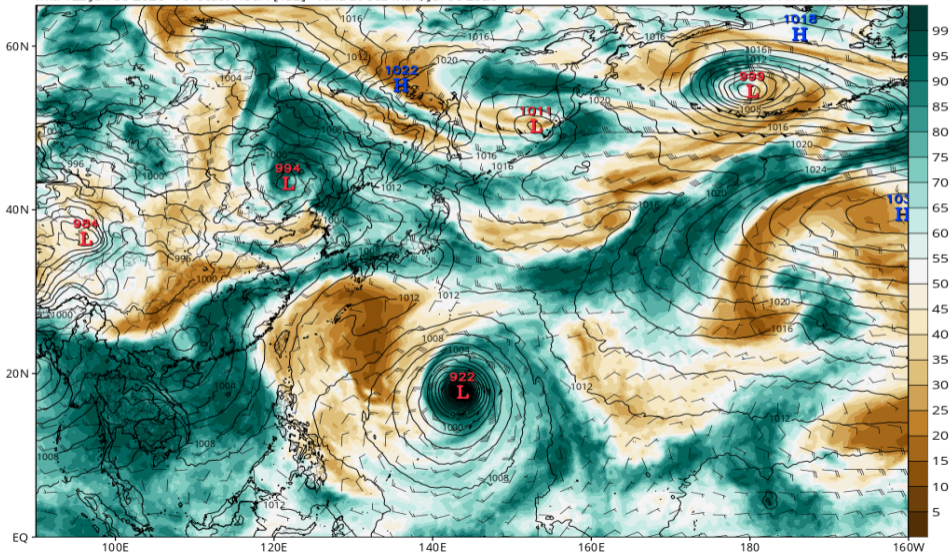


# RH700-300 (GFS 07/06 00Z 予報)

GFS MSLP (mb), 700-300 hPa Relative Humidity (%), and 700-300 hPa Wind (kt)

Init: 12z Jun 30 2026 Forecast Hour: [132] valid at 00z Mon, Jul 06 2026

TROPICALTIDBITS.COM

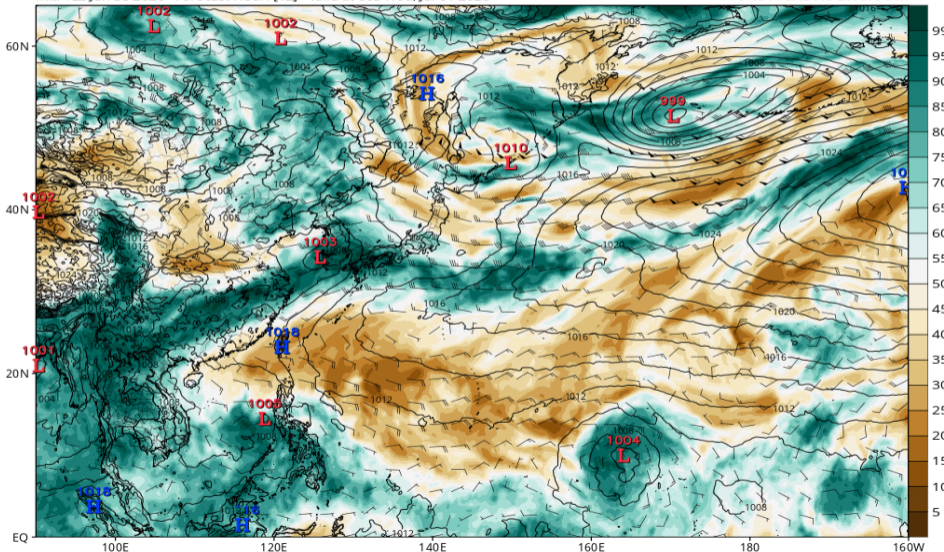


# RH700-300 (ECMWF 07/01 00Z 予報)

ECMWF MSLP (mb), 700-300 hPa Relative Humidity (%), and 700-300 hPa Wind (kt)

Init: 12z Jun 30 2026 Forecast Hour: [12] valid at 00z Wed, Jul 01 2026

TROPICALTIDBITS.COM

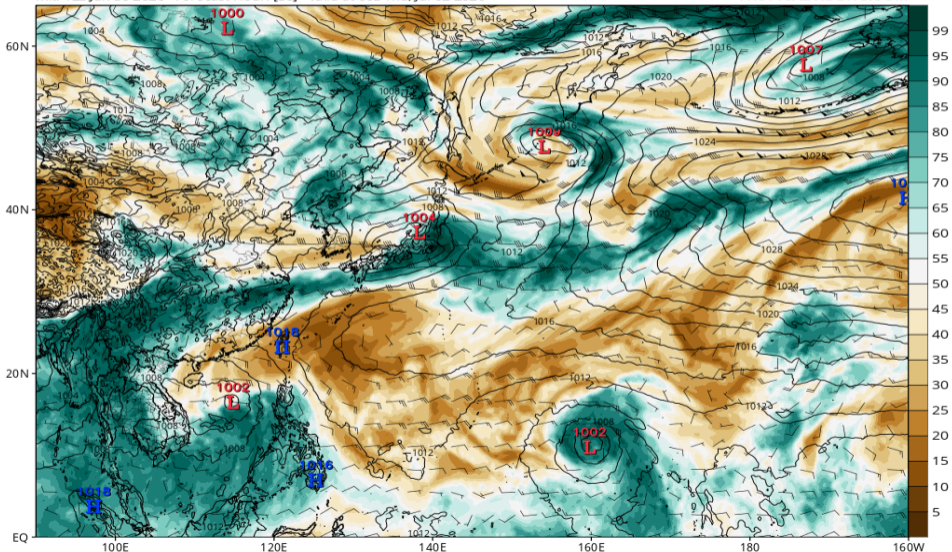


# RH700-300 (ECMWF 07/02 00Z 予報)

ECMWF MSLP (mb), 700-300 hPa Relative Humidity (%), and 700-300 hPa Wind (kt)

Init: 12z Jun 30 2026 Forecast Hour: [36] valid at 00z Thu, Jul 02 2026

TROPICALTIDBITS.COM

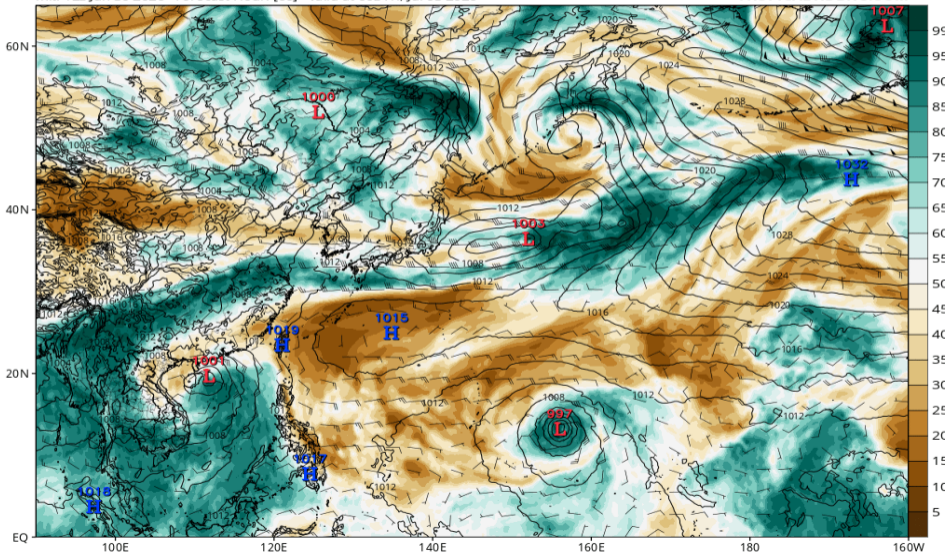


# RH700-300 (ECMWF 07/03 00Z 予報)

ECMWF MSLP (mb), 700-300 hPa Relative Humidity (%), and 700-300 hPa Wind (kt)

Init: 12z Jun 30 2026 Forecast Hour: [60] valid at 00z Fri, Jul 03 2026

TROPICALTIDBITS.COM

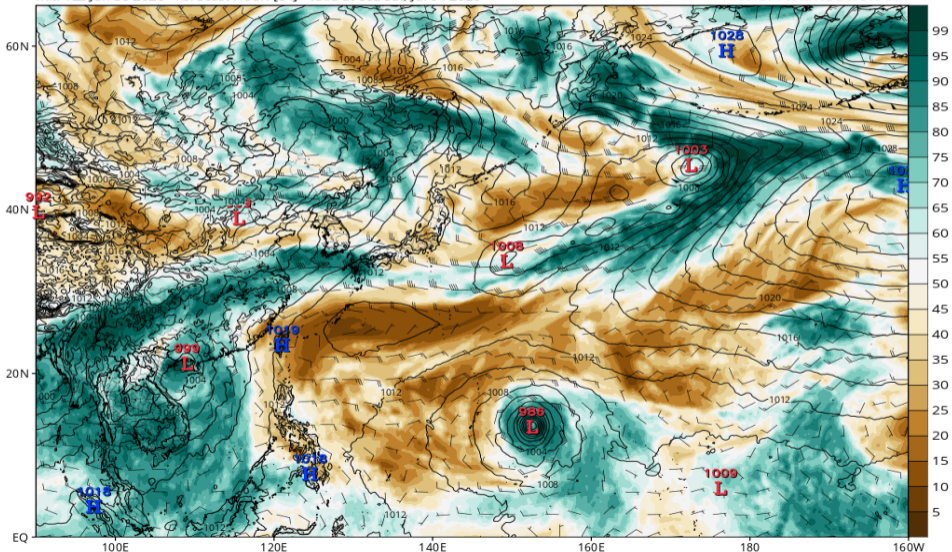


# RH700-300 (ECMWF 07/04 00Z 予報)

ECMWF MSLP (mb), 700-300 hPa Relative Humidity (%), and 700-300 hPa Wind (kt)

Init: 12z Jun 30 2026 Forecast Hour: [84] valid at 00z Sat, Jul 04 2026

TROPICALTIDBITS.COM

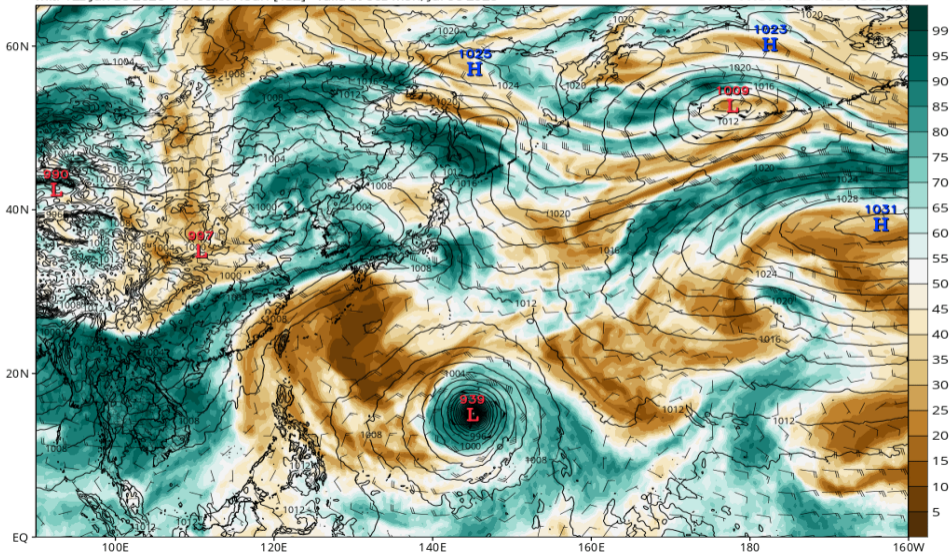


# RH700-300 (ECMWF 07/06 00Z 予報)

ECMWF MSLP (mb), 700-300 hPa Relative Humidity (%), and 700-300 hPa Wind (kt)

Init: 12z Jun 30 2026 Forecast Hour: [132] valid at 00z Mon, Jul 06 2026

TROPICALTIDBITS.COM

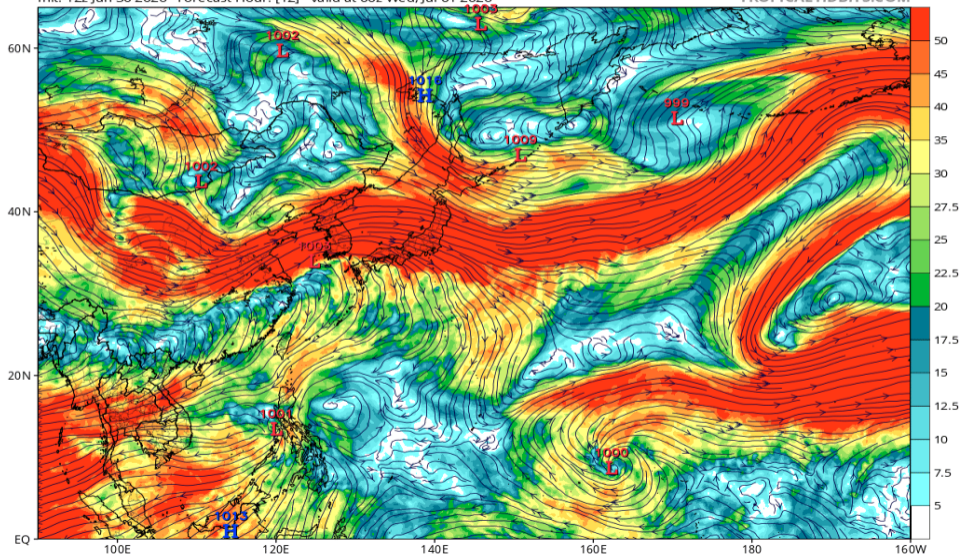


# Wshear850-200 (GFS 07/01 00Z 予報)

GFS 200mb-850mb Wind Shear (knots) & Low Centers (mb)

Init: 12z Jun 30 2026 Forecast Hour: [12] valid at 00z Wed, Jul 01 2026

TROPICALTIDBITS.COM

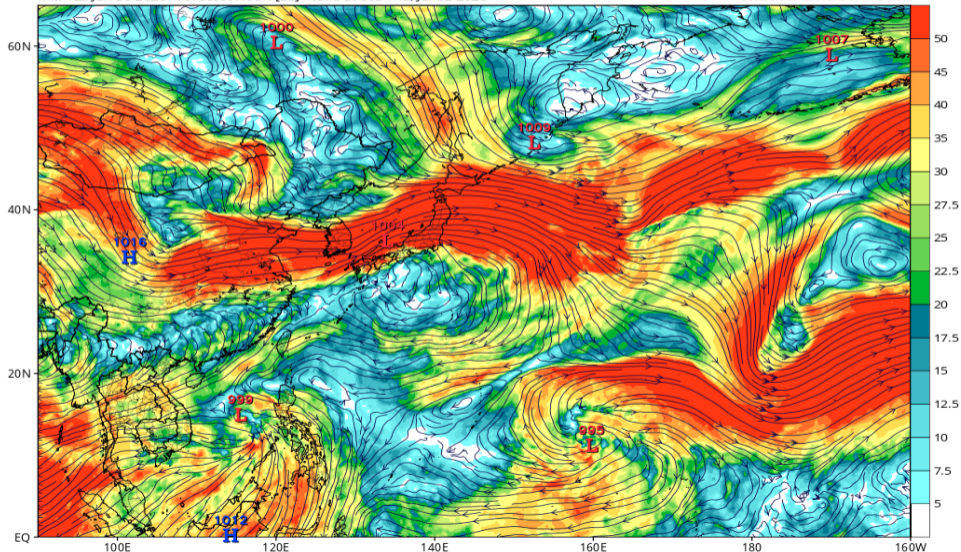


# Wshear850-200 (GFS 07/02 00Z 予報)

GFS 200mb-850mb Wind Shear (knots) & Low Centers (mb)

Init: 12z Jun 30 2026 Forecast Hour: [36] valid at 00z Thu, Jul 02 2026

TROPICALTIDBITS.COM

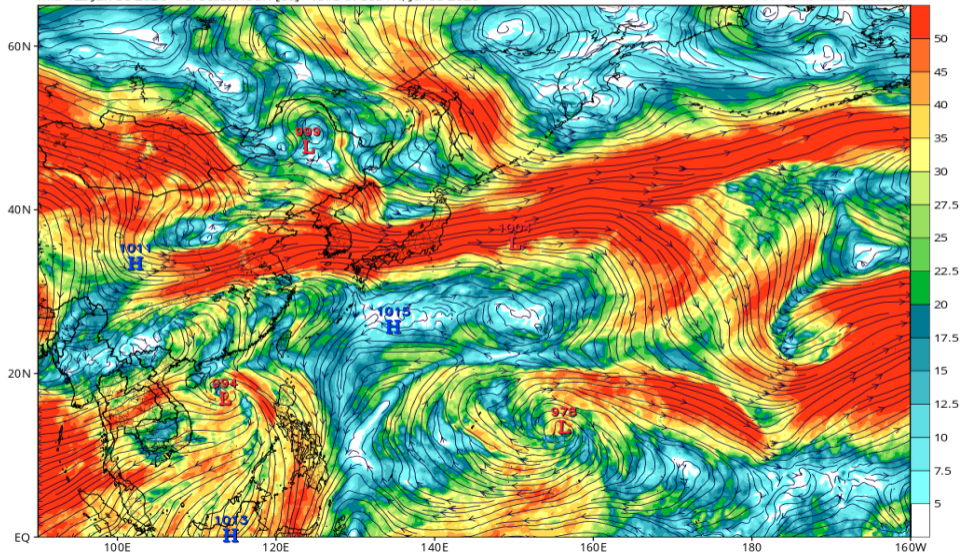


# Wshear850-200 (GFS 07/03 00Z 予報)

GFS 200mb-850mb Wind Shear (knots) & Low Centers (mb)

Init: 12z Jun 30 2026 Forecast Hour: [60] valid at 00z Fri, Jul 03 2026

TROPICALTIDBITS.COM

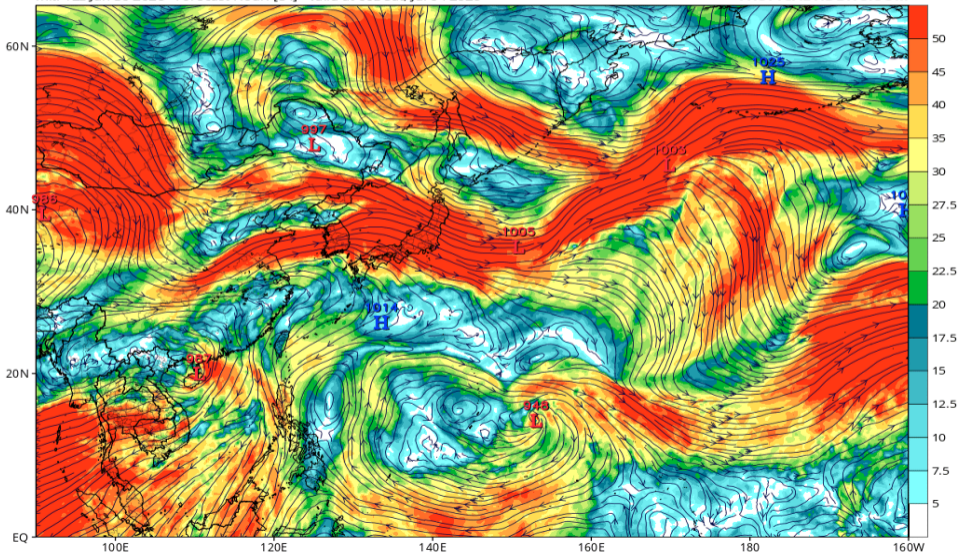


# Wshear850-200 (GFS 07/04 00Z 予報)

GFS 200mb-850mb Wind Shear (knots) & Low Centers (mb)

Init: 12z Jun 30 2026 Forecast Hour: [84] valid at 00z Sat, Jul 04 2026

TROPICALTIDBITS.COM

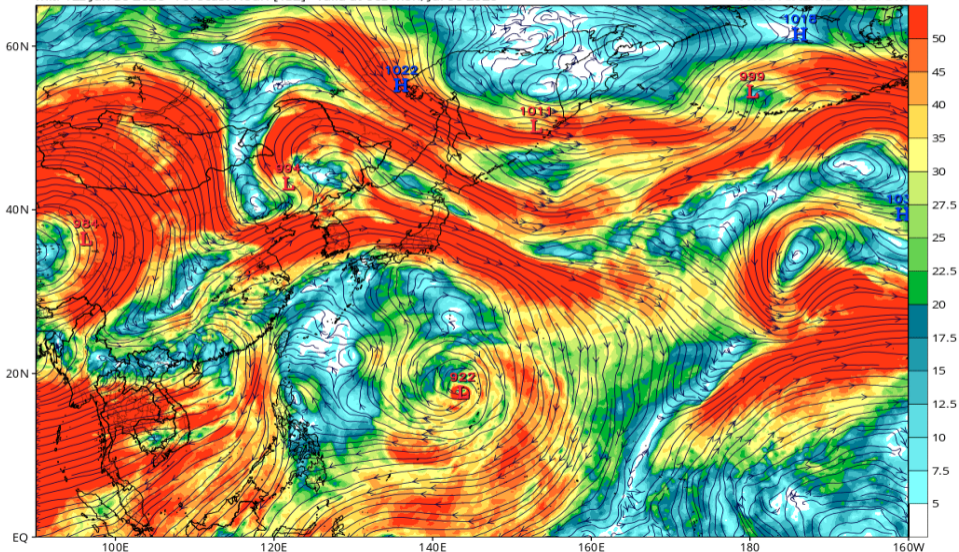


# Wshear850-200 (GFS 07/06 00Z 予報)

GFS 200mb-850mb Wind Shear (knots) & Low Centers (mb)

Init: 12z Jun 30 2026 Forecast Hour: [132] valid at 00z Mon, Jul 06 2026

TROPICALTIDBITS.COM

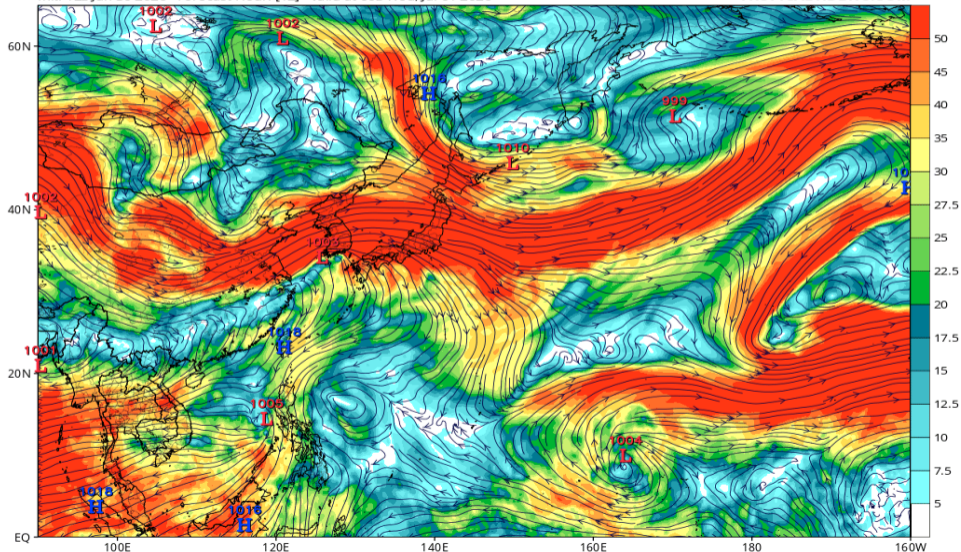


# Wshear850-200 (ECMWF 07/01 00Z 予報)

ECMWF 200mb-850mb Wind Shear (knots) & Low Centers (mb)

Init: 12z Jun 30 2026 Forecast Hour: [12] valid at 00z Wed, Jul 01 2026

TROPICALTIDBITS.COM

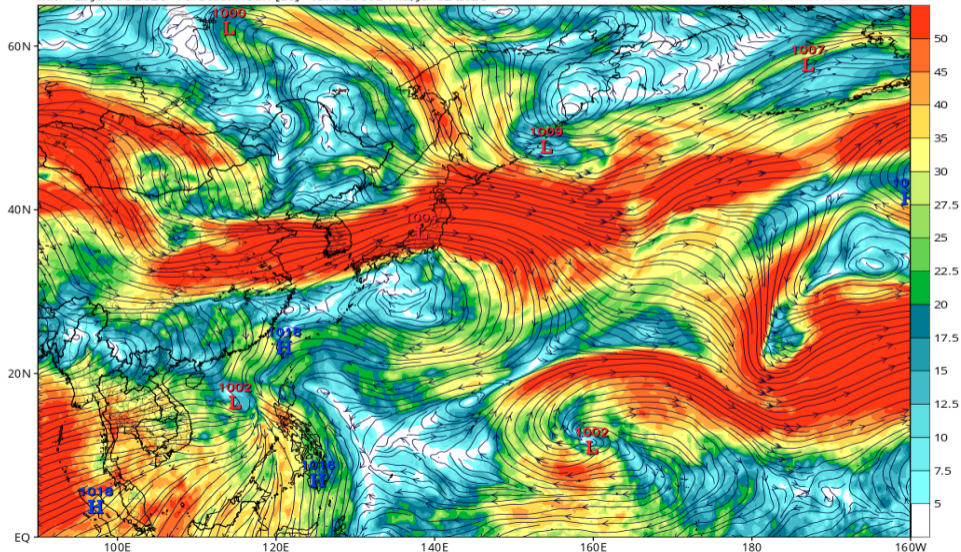


# Wshear850-200 (ECMWF 07/02 00Z 予報)

ECMWF 200mb-850mb Wind Shear (knots) & Low Centers (mb)

Init: 12z Jun 30 2026 Forecast Hour: [36] valid at 00z Thu, Jul 02 2026

TROPICALTIDBITS.COM

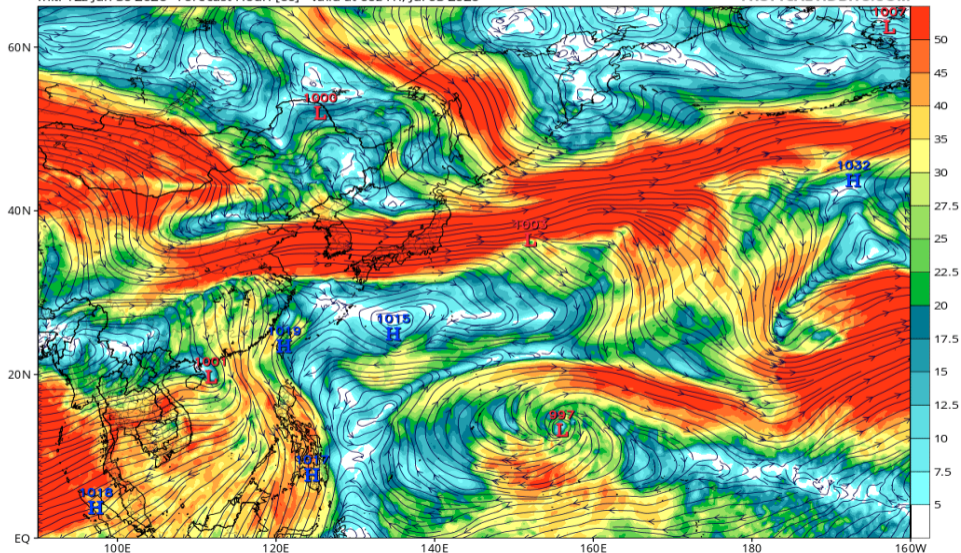


# Wshear850-200 (ECMWF 07/03 00Z 予報)

ECMWF 200mb-850mb Wind Shear (knots) & Low Centers (mb)

Init: 12z Jun 30 2026 Forecast Hour: [60] valid at 00z Fri, Jul 03 2026

TROPICALTIDBITS.COM

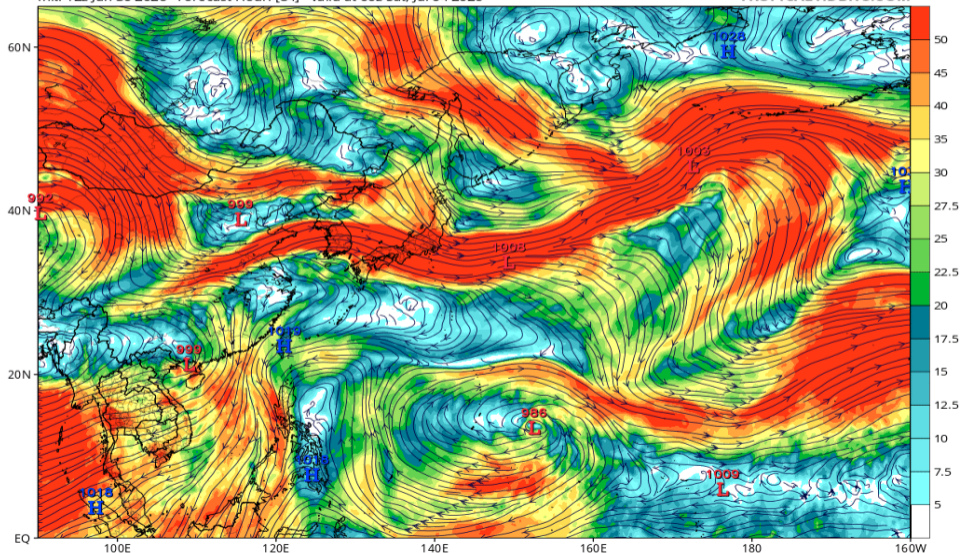


# Wshear850-200 (ECMWF 07/04 00Z 予報)

ECMWF 200mb-850mb Wind Shear (knots) & Low Centers (mb)

Init: 12z Jun 30 2026 Forecast Hour: [84] valid at 00z Sat, Jul 04 2026

TROPICALTIDBITS.COM

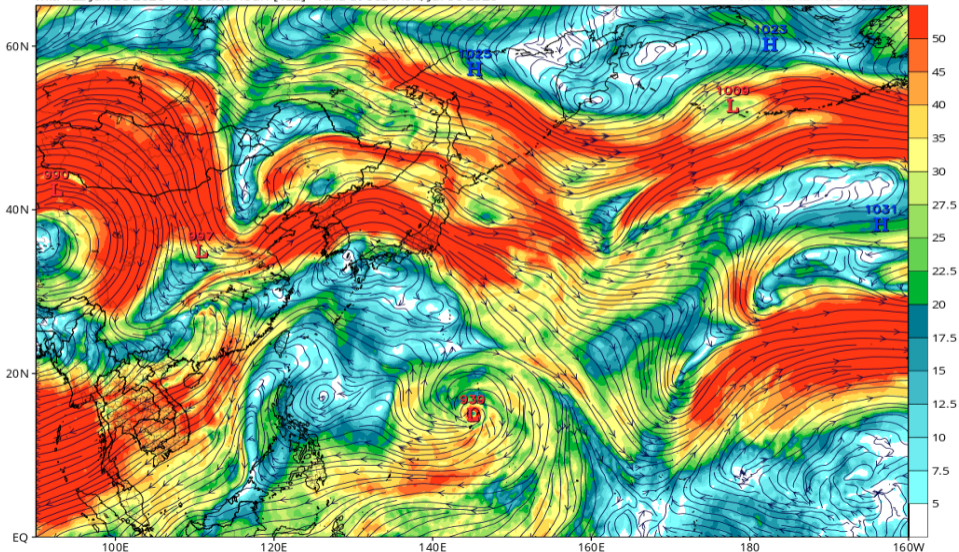


# Wshear850-200 (ECMWF 07/06 00Z 予報)

ECMWF 200mb-850mb Wind Shear (knots) & Low Centers (mb)

Init: 12z Jun 30 2026 Forecast Hour: [132] valid at 00z Mon, Jul 06 2026

TROPICALTIDBITS.COM

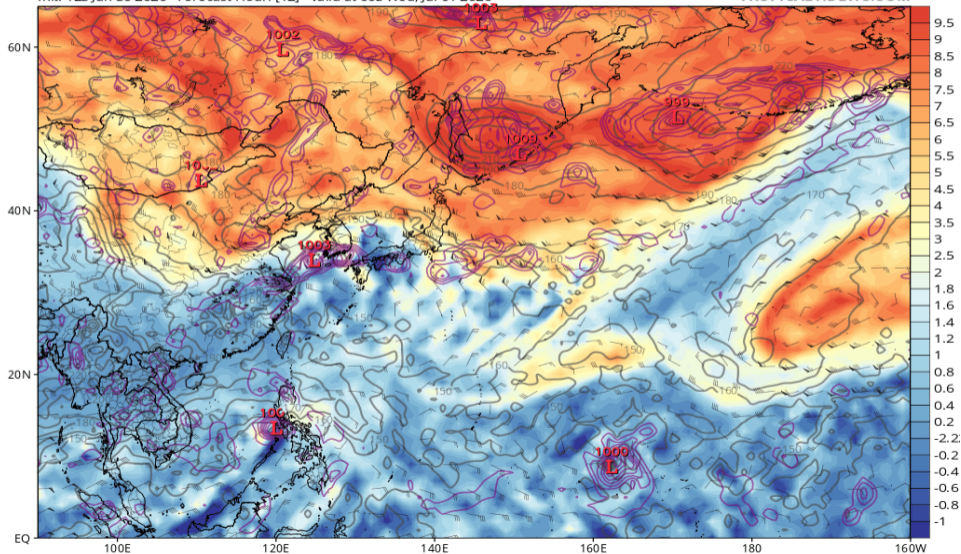


# 渦位 355K (GFS 07/01 00Z 予報)

GFS 355K Cyclonic PV (PVU), Wind (kt), Pressure (hPa, gray), & 850 hPa Cyclonic Vorticity (purple) [1.0°x1.0° grid]

Init: 12z Jun 30 2026 Forecast Hour: [12] valid at 00z Wed, Jul 01 2026

TROPICALTIDBITS.COM

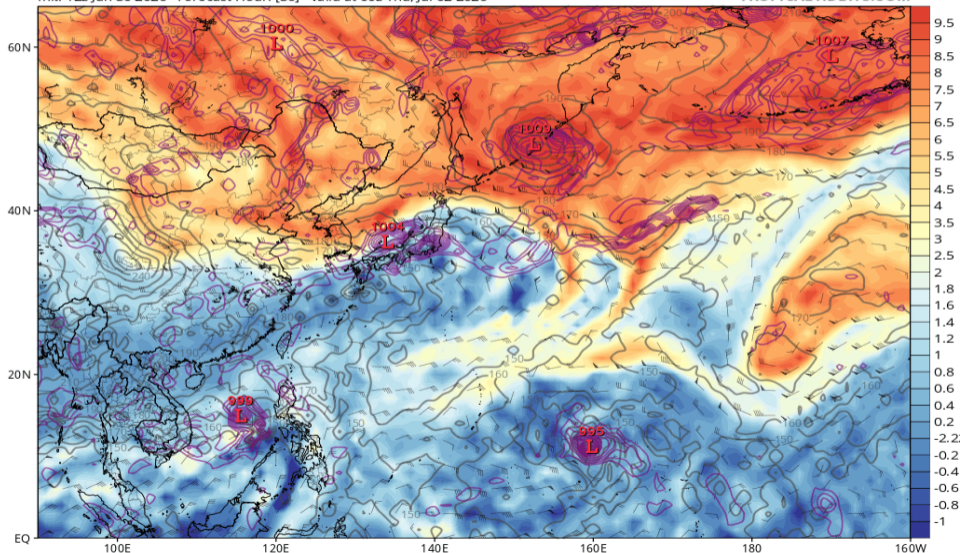


# 渦位 355K (GFS 07/02 00Z 予報)

GFS 355K Cyclonic PV (PVU), Wind (kt), Pressure (hPa, gray), & 850 hPa Cyclonic Vorticity (purple) [1.0°x1.0° grid]

Init: 12z Jun 30 2026 Forecast Hour: [36] valid at 00z Thu, Jul 02 2026

TROPICALTIDBITS.COM

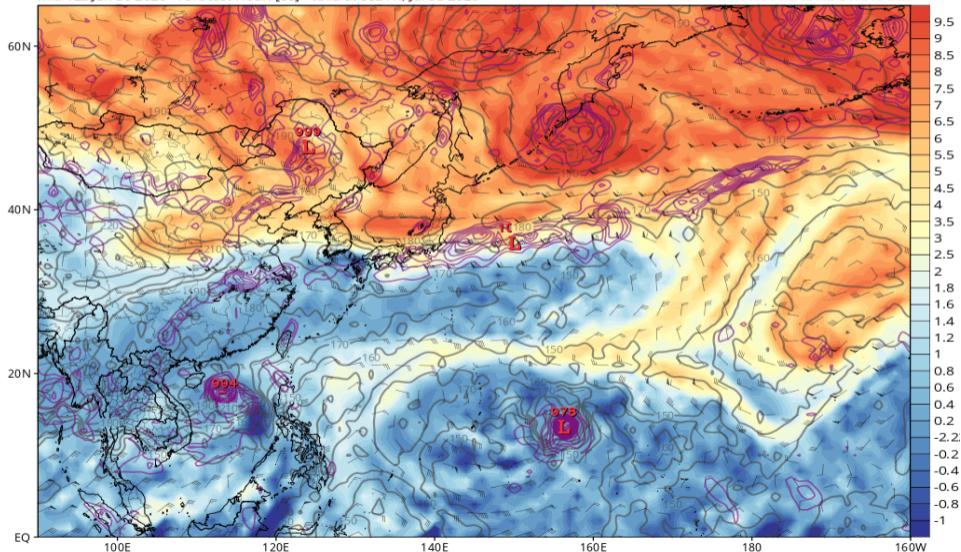


# 渦位 355K (GFS 07/03 00Z 予報)

GFS 355K Cyclonic PV (PVU), Wind (kt), Pressure (hPa, gray), & 850 hPa Cyclonic Vorticity (purple) [1.0°x1.0° grid]

Init: 12z Jun 30 2026 Forecast Hour: [60] valid at 00z Fri, Jul 03 2026

TROPICALTIDBITS.COM

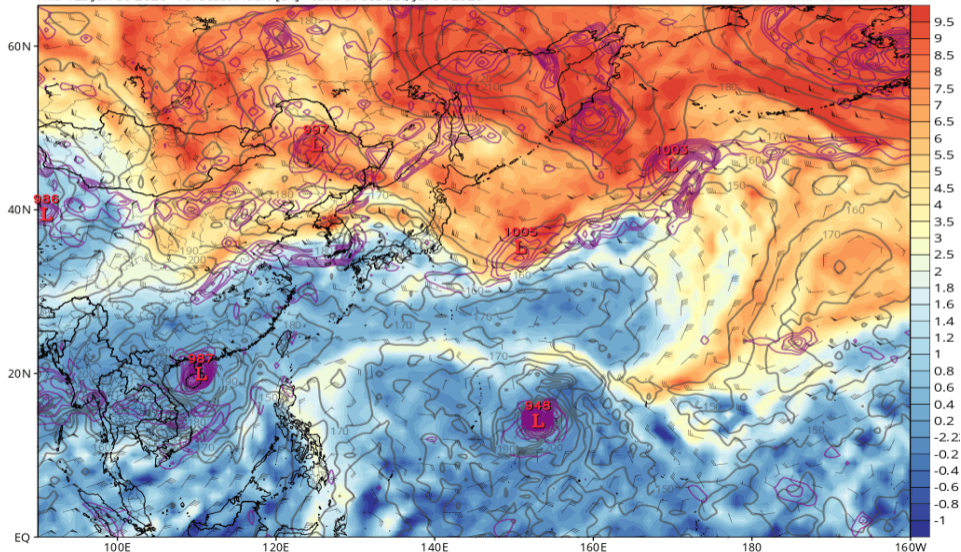


# 渦位 355K (GFS 07/04 00Z 予報)

GFS 355K Cyclonic PV (PVU), Wind (kt), Pressure (hPa, gray), & 850 hPa Cyclonic Vorticity (purple) [1.0°x1.0° grid]

Init: 12z Jun 30 2026 Forecast Hour: [84] valid at 00z Sat, Jul 04 2026

TROPICALTIDBITS.COM

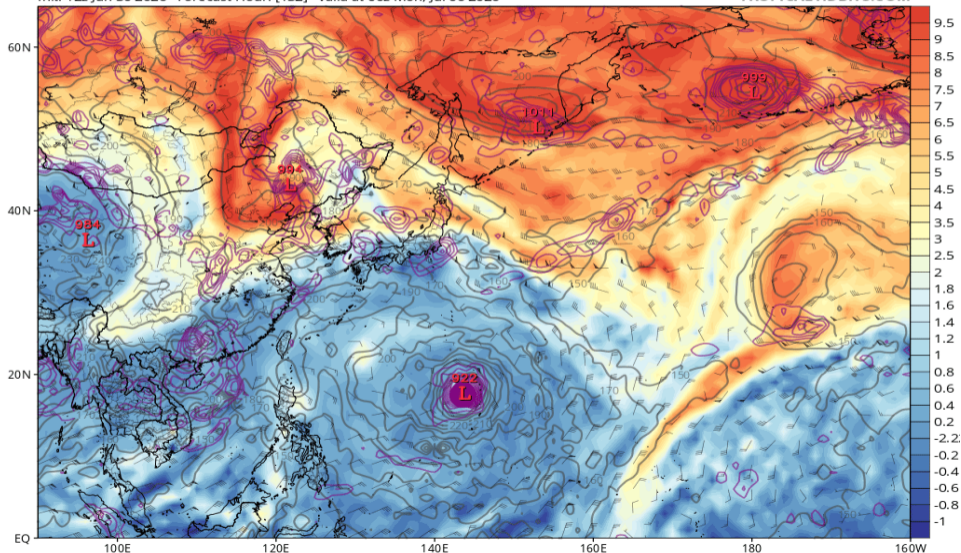


# 渦位 355K (GFS 07/06 00Z 予報)

GFS 355K Cyclonic PV (PVU), Wind (kt), Pressure (hPa, gray), & 850 hPa Cyclonic Vorticity (purple) [1.0°x1.0° grid]

Init: 12z Jun 30 2026 Forecast Hour: [132] valid at 00z Mon, Jul 06 2026

TROPICALTIDBITS.COM



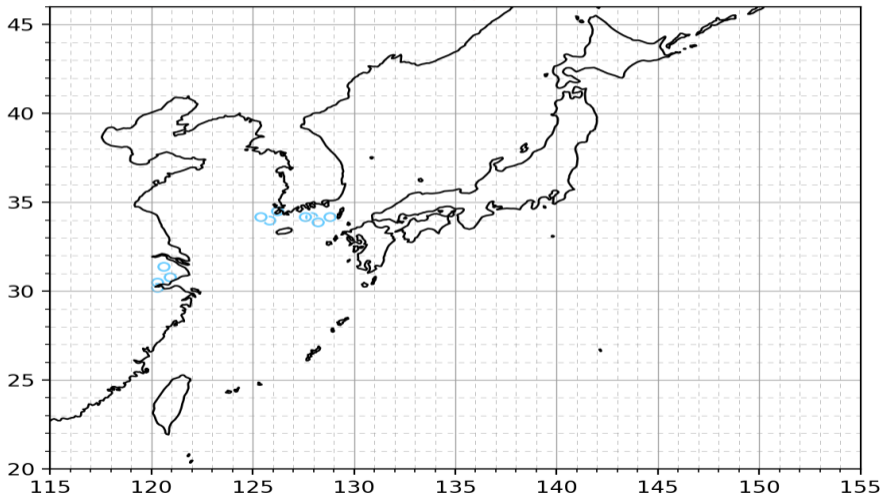
# GrandEns (IFS/AIFS/GFS/AIGFS/GSM 07/01 00Z 予報)

Grand Ensemble

weather-models.info | ECMWF Open Data (CC BY 4.0),  
NOAA data, 気象庁データ (ウェザーマップ社提供)

Init: 2026/06/30 18Z FT: 006h Valid: 2026/07/01 00Z

実際の進路予想は、気象庁の台風予報を利用してください



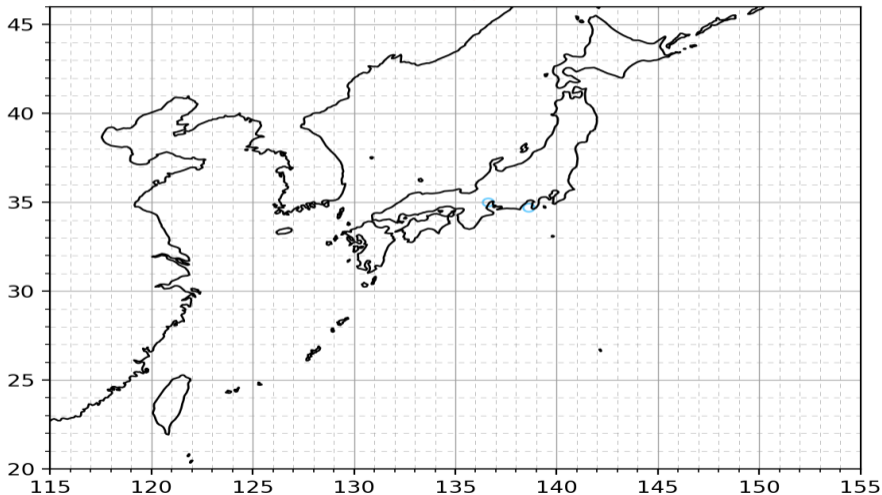
# GrandEns (IFS/AIFS/GFS/AIGFS/GSM 07/02 00Z 予報)

Grand Ensemble

weather-models.info | ECMWF Open Data (CC BY 4.0),  
NOAA data, 気象庁データ (ウェザーマップ社提供)

Init: 2026/06/30 18Z FT: 030h Valid: 2026/07/02 00Z

実際の進路予想は、気象庁の台風予報を利用してください



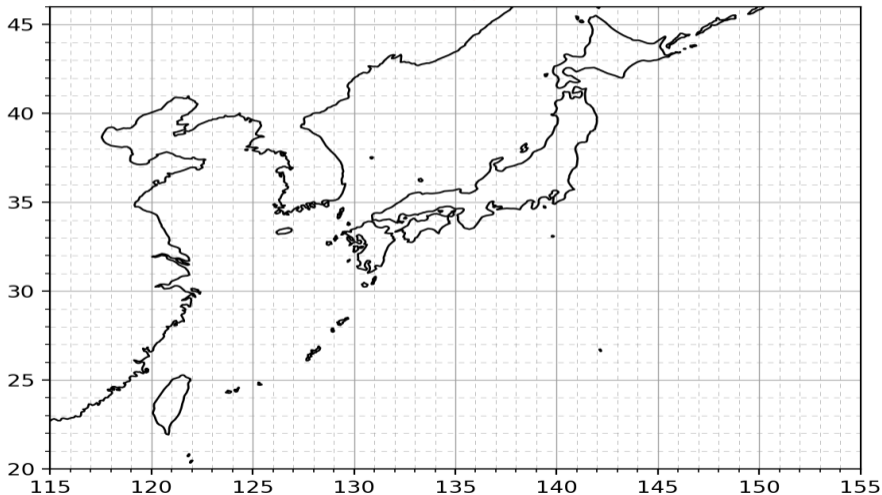
# GrandEns (IFS/AIFS/GFS/AIGFS/GSM 07/03 00Z 予報)

Grand Ensemble

weather-models.info | ECMWF Open Data (CC BY 4.0),  
NOAA data, 気象庁データ (ウェザーマップ社提供)

Init: 2026/06/30 18Z FT: 054h Valid: 2026/07/03 00Z

実際の進路予想は、気象庁の台風予報を利用してください



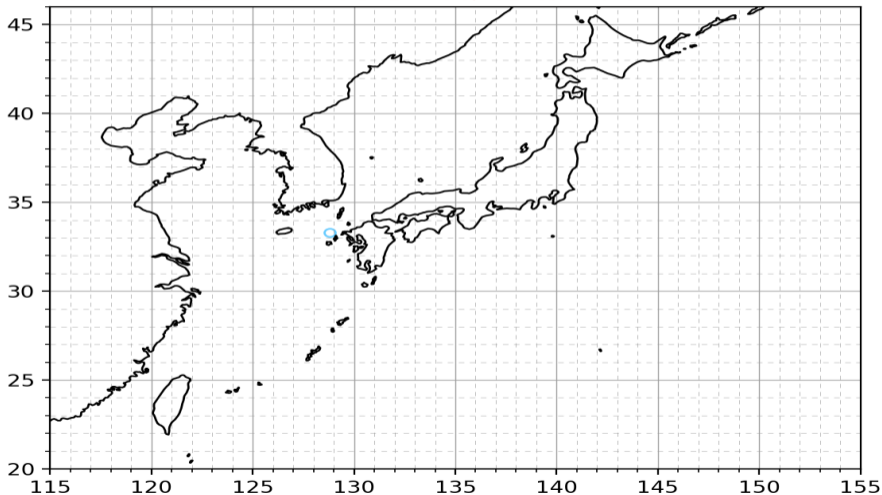
# GrandEns (IFS/AIFS/GFS/AIGFS/GSM 07/04 00Z 予報)

Grand Ensemble

weather-models.info | ECMWF Open Data (CC BY 4.0),  
NOAA data, 気象庁データ (ウェザーマップ社提供)

Init: 2026/06/30 18Z FT: 078h Valid: 2026/07/04 00Z

実際の進路予想は、気象庁の台風予報を利用してください



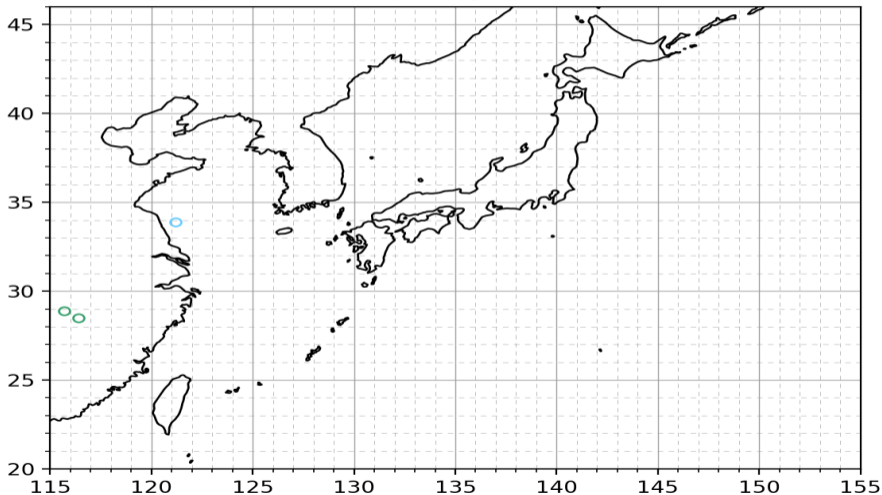
# GrandEns (IFS/AIFS/GFS/AIGFS/GSM 07/05 00Z 予報)

Grand Ensemble

weather-models.info | ECMWF Open Data (CC BY 4.0),  
NOAA data, 気象庁データ (ウェザーマップ社提供)

Init: 2026/06/30 18Z FT: 102h Valid: 2026/07/05 00Z

実際の進路予想は、気象庁の台風予報を利用してください



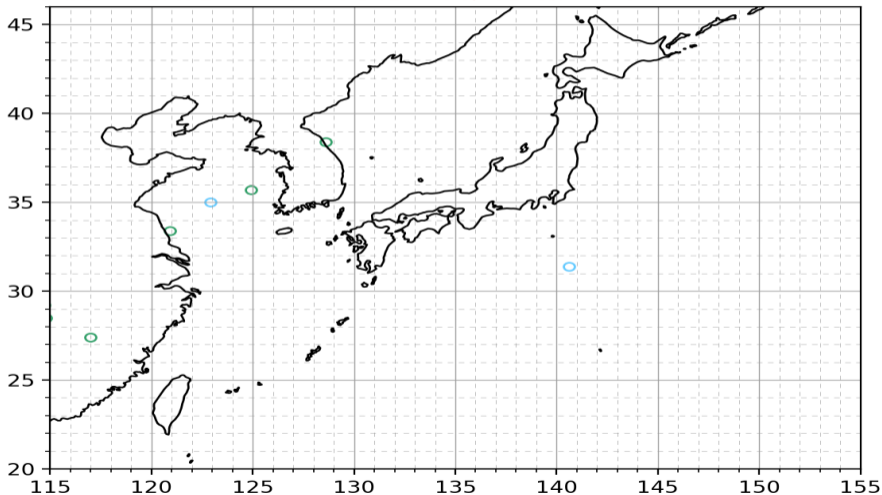
# GrandEns (IFS/AIFS/GFS/AIGFS/GSM 07/06 00Z 予報)

Grand Ensemble

weather-models.info | ECMWF Open Data (CC BY 4.0),  
NOAA data, 気象庁データ (ウェザーマップ社提供)

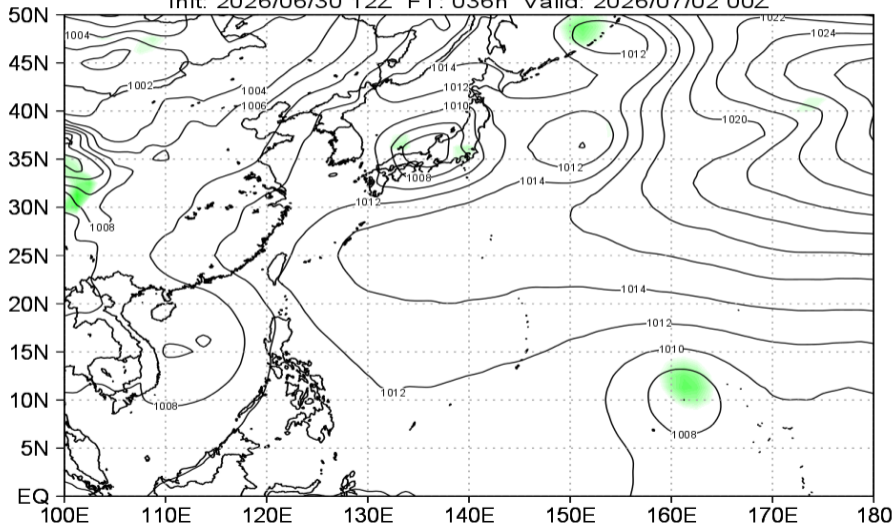
Init: 2026/06/30 18Z FT: 126h Valid: 2026/07/06 00Z

実際の進路予想は、気象庁の台風予報を利用してください



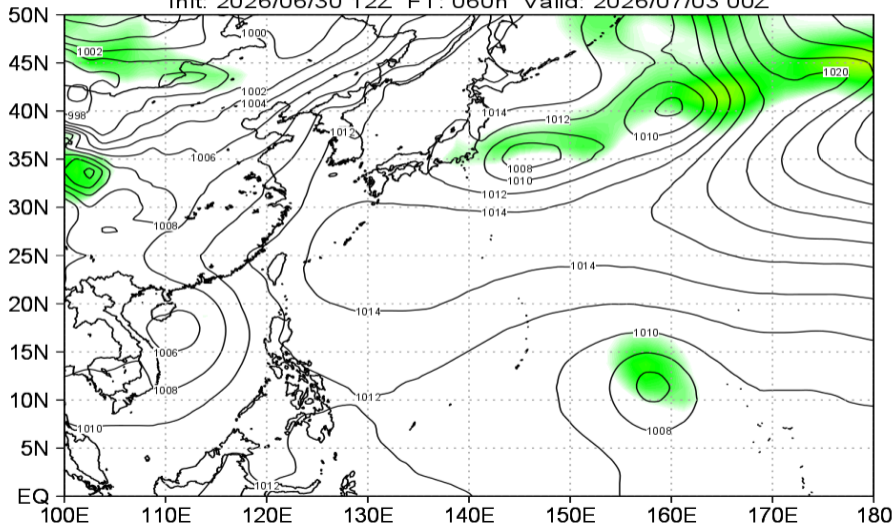
# 地上気圧 (GSMens 07/02 00Z 予報)

JMA GEPS MSLP (hPa) Mean&Spread  
Init: 2026/06/30 12Z FT: 036h Valid: 2026/07/02 00Z



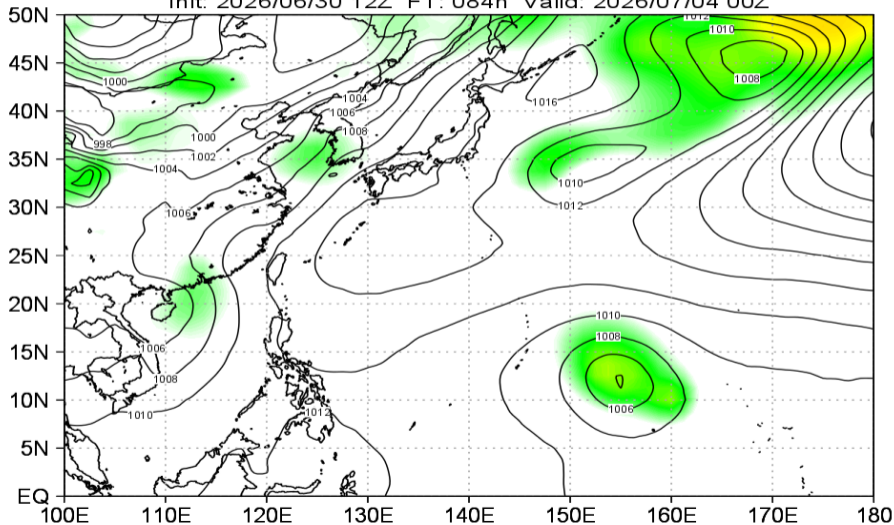
# 地上気圧 (GSMens 07/03 00Z 予報)

JMA GEPS MSLP (hPa) Mean&Spread  
Init: 2026/06/30 12Z FT: 060h Valid: 2026/07/03 00Z



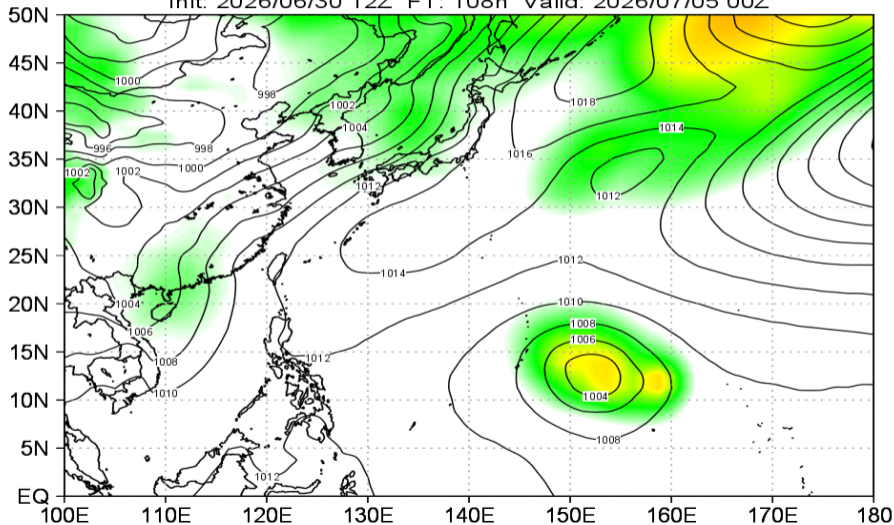
# 地上気圧 (GSMens 07/04 00Z 予報)

JMA GEPS MSLP (hPa) Mean&Spread  
Init: 2026/06/30 12Z FT: 084h Valid: 2026/07/04 00Z



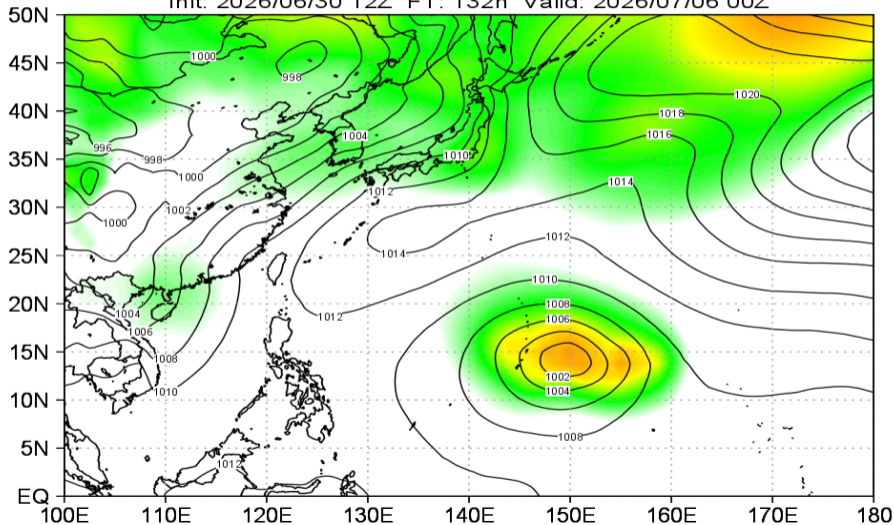
# 地上気圧 (GSMens 07/05 00Z 予報)

JMA GEPS MSLP (hPa) Mean&Spread  
Init: 2026/06/30 12Z FT: 108h Valid: 2026/07/05 00Z



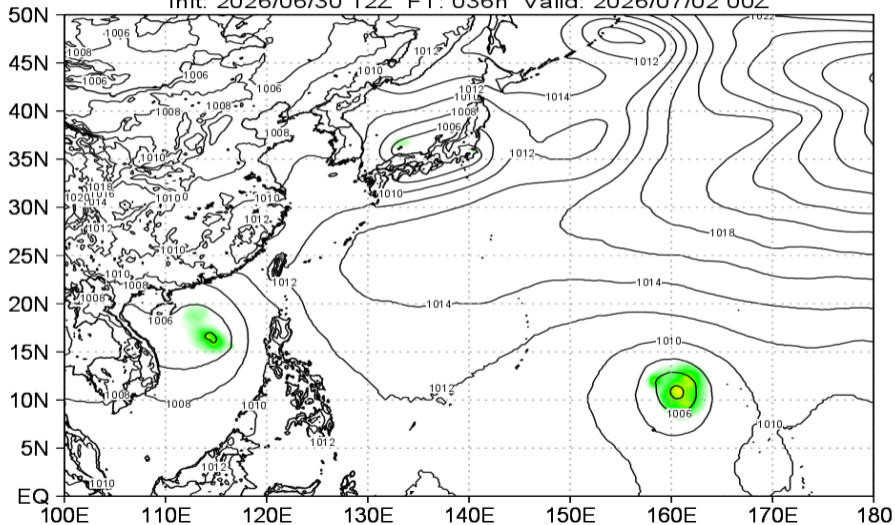
# 地上気圧 (GSMens 07/06 00Z 予報)

JMA GEPS MSLP (hPa) Mean&Spread  
Init: 2026/06/30 12Z FT: 132h Valid: 2026/07/06 00Z



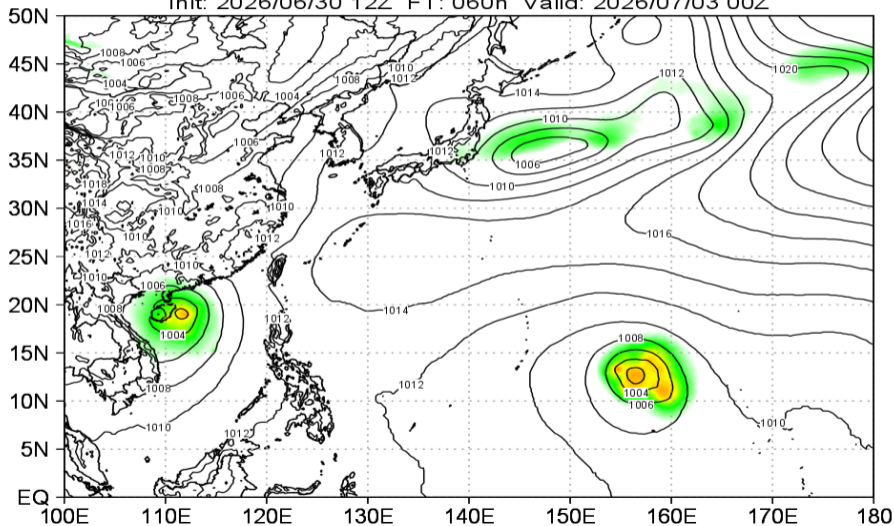
# 地上気圧 (IFSens 07/02 00Z 予報)

ECMWF IFS ENS MSLP (hPa) Mean&Spread  
Init: 2026/06/30 12Z FT: 036h Valid: 2026/07/02 00Z



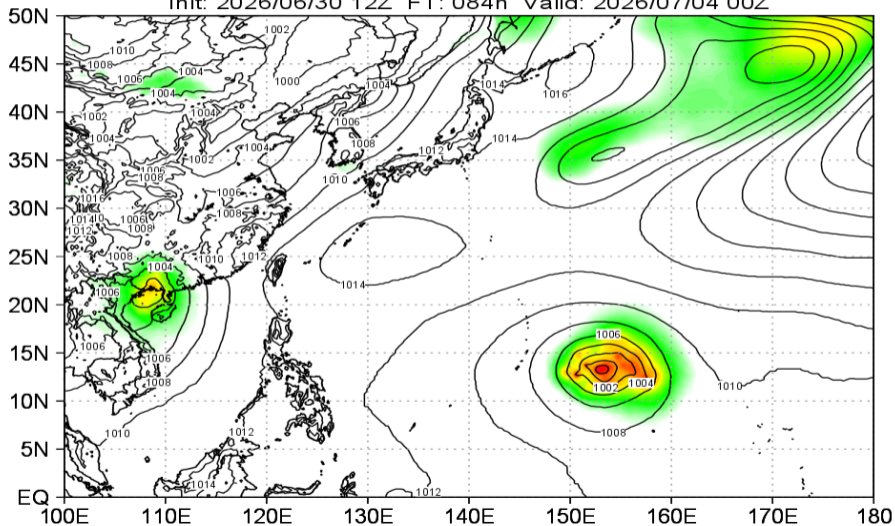
# 地上気圧 (IFSens 07/03 00Z 予報)

ECMWF IFS ENS MSLP (hPa) Mean&Spread  
Init: 2026/06/30 12Z FT: 060h Valid: 2026/07/03 00Z



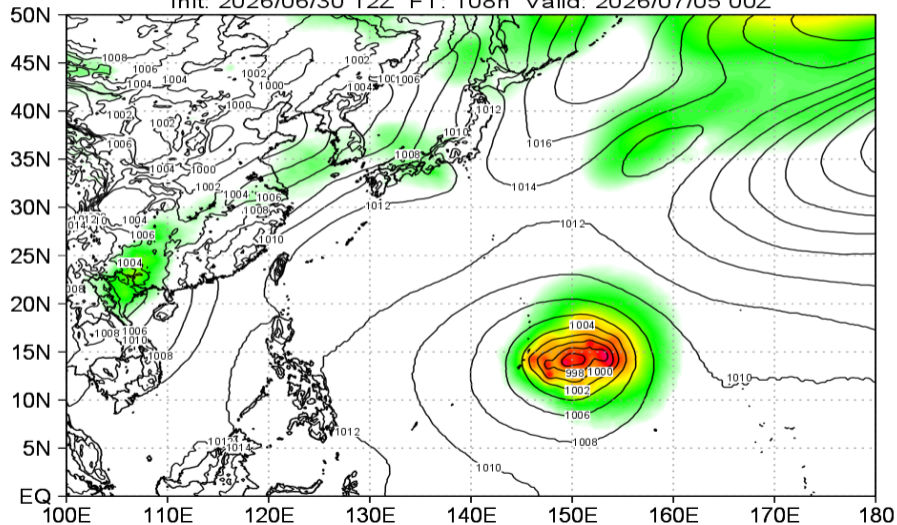
# 地上気圧 (IFSens 07/04 00Z 予報)

ECMWF IFS ENS MSLP (hPa) Mean&Spread  
Init: 2026/06/30 12Z FT: 084h Valid: 2026/07/04 00Z



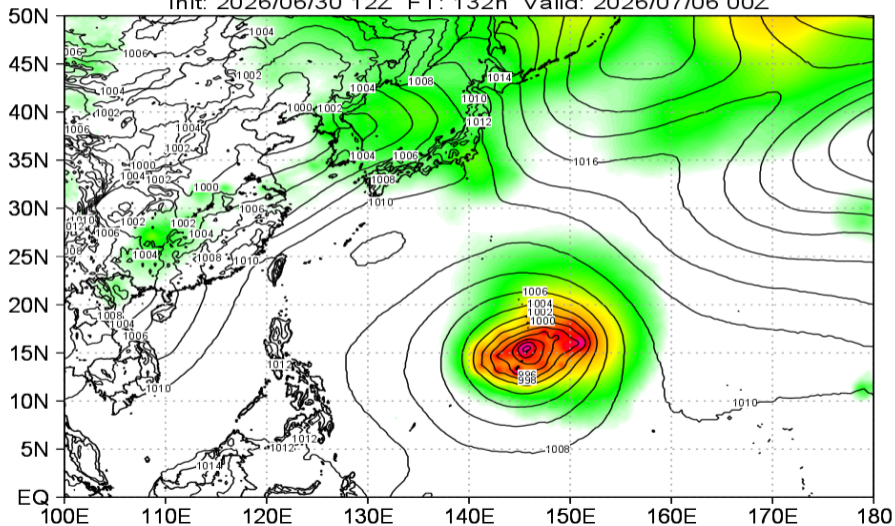
# 地上気圧 (IFSens 07/05 00Z 予報)

ECMWF IFS ENS MSLP (hPa) Mean&Spread  
Init: 2026/06/30 12Z FT: 108h Valid: 2026/07/05 00Z



# 地上気圧 (IFSens 07/06 00Z 予報)

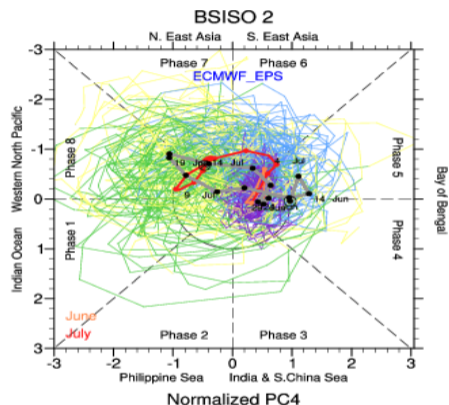
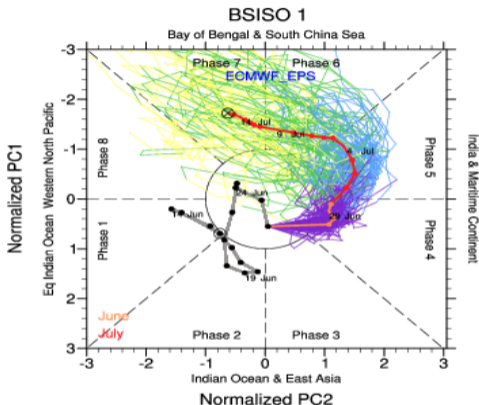
ECMWF IFS ENS MSLP (hPa) Mean&Spread  
Init: 2026/06/30 12Z FT: 132h Valid: 2026/07/06 00Z



No Figure

# BSISO 予測 (ECMWFens 06/27 初期)

BSISO Forecast for 27-June-2026 to 16-July-2026



Reanalysis

0-4d

5-9d

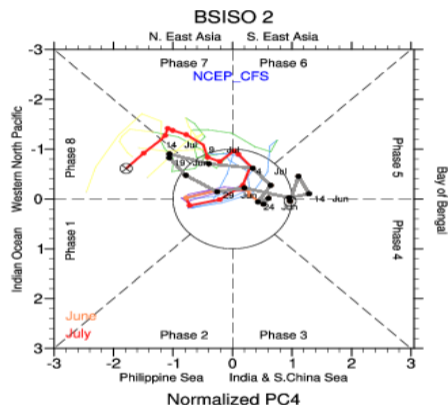
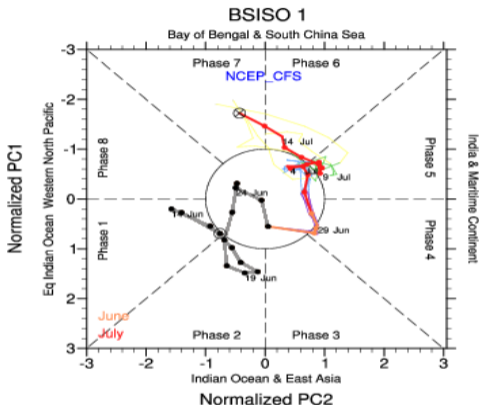
Ensemble Mean

10-14d

15-19d

# BSISO 予測 (NCEPCFSens 06/27 初期)

## BSISO Forecast for 27-June-2026 to 16-July-2026



Reanalysis

0-4d

5-9d

Ensemble Mean

10-14d

15-19d